

Samsung Auto Backup User Manual



[Rev. 06 06/05/2009 Samsung Auto Backup User Manual First edition October 2008 This revision - 05] Copyright © 2008 Clarus, Inc. All Rights Reserved. No part of this document may be communicated, distributed, reproduced, or transmitted in any form or by any means without the prior written permission of Clarus, Inc., except as allowed under the copyright laws. All brand and product names are trademarks of their respective companies. Samsung and Clarus, Inc. is a registered trademark of Samsung Electronics Co. and Clarus, Inc. Samsung Auto Backup is a trademark of Samsung Electronics Co. Linux is a registered trademark of Linus Torvalds in the United States, other countries, or both.

Microsoft, Windows, Windows NT, and the Windows logo are trademarks of Microsoft Corporation in the United States, other countries, or both.

Microsoft® Microsoft, Encarta, MSN, Windows, Microsoft Word, and Windows Vista™ are either registered trademarks or trademarks of Microsoft Corporation in the United States and/or other countries.

IBM®, PC-DOS, PC are register trademark of International Machine Corporation. IBM, the IBM logo and ibm.com are trademarks of International Business Machines Corp., registered in many jurisdictions worldwide. Other product and service names might be trademarks of IBM or other companies.

Intel, Intel logo, Intel Inside, Intel Inside logo, Intel Centrino, Intel Centrino logo, Celeron, Intel Xeon, Intel SpeedStep, Itanium, and Pentium® are trademarks or registered trademarks of Intel Corporation or its subsidiaries in the United States and other countries.

Patents

Samsung Electronics Co., Ltd. Moreover, Clarus, Inc. may have patents or patent pending applications, trademarks, copyrights, or other intellectual property rights covering subject matter in this document. The furnishing of this document does not give the recipient or reader any license to these patents, trademarks, copyrights, or other intellectual property rights.

IMPORTANT

Please read and understand the complete contents of this manual. The contents of this manual may be modified without prior notice.

Though every care has been taken to ensure the accuracy of this document, Clarus, Inc. cannot accept responsibility for any errors or omissions or for any loss, whether legal or natural, occurring to any person when acting, or refraining from action, because of the information contained herein.

Information in this document is subject to change without notice.

For more information, please visit

Clarus, Inc. Homepage<http://www.clarussoft.com/>

Chapter 1 Introduction.....	5
Chapter 2 Handling Precautions	7
Regular Virus Scanning.....	7
Safely Remove Hardware	7
Always Backup your important Data	7
Chapter 3 Terms and Concepts of Backup.....	8
Chapter 4 Installing the Software	12
Before Installation	13
Preparing your Computer.....	14
System Requirements	14
Connecting the Drive to Your Computer.....	15
Installing the Software	16
Startup Screen	17
Choose your Language	17
Welcome message	18
License Agreement.....	19
Choose the Destination Folder	20
Chapter 5 Setting up the Auto Backup.....	23
Getting Started	24
Setting up your Preferences	25
Creating a Folder	26
Creating a Password.....	27
Setting the Task Log Options.....	29
File Filter	31
Backup Groups of Files	32
Backup Types of Files by Extension	33
Setting the Backup Schedule	34
Chapter 6 Managing Data	36
Starting Data Management	37
First Backup	38
Disk Space Information	39
Samsung Auto Backup Main Screen.....	39
Menu Bar	40
Task Menu	41

View Menu	41
Tools Menu	42
Tools Menu Help	42
Icon Bar	43
Quick Backup	44
Viewing Backup Results	45
Check the Backup from Windows Explorer	46
Chapter 7 Advanced	47
Changing Options	48
Set Task Options	48
File Filter	49
Schedule.....	49
Login Password.....	50
Backup Mode.....	51
Deleting Backed up Data	53
Restoring Data	56
Settings Information	58
Task Log.....	59
Tools Menu	63
Setting the Backup Device	63
Changing the Backup Device	64
Replicating the Backup Device	65
Restoring the Backup Information	67
Using Migration	67
Connecting to a Network Folder.....	72
Disconnecting a Network Drive	74
Checking the Integrity of Backed up Data	75
About Samsung Auto Backup	77

Introduction

Chapter 1 Introduction

Congratulations on becoming an owner of the Samsung Auto Backup Program. You made an excellent choice and we hope you will enjoy all its capabilities.

Introduction

Samsung Auto Backup is the ultimate backup solution for creating reserve copies of data. You can make full, custom, and scheduled backups. With Samsung Auto Backup, you will get encryption, scheduled backups, and extracting tool. Here is what you get:

- Two ways to backup: Scheduled or in real-time
- SafetyKey™ for protecting your precious contents
- Capacity Gauge through tray icon (Windows O/S)

NOTE: PLEASE READ AND UNDERSTAND THE COMPLETE CONTENTS OF THIS MANUAL. THE CONTENTS OF THIS MANUAL MAY BE MODIFIED WITHOUT PRIOR NOTICE.

[For more information, please visit Clarus, Inc. Homepage http://www.clarussoft.com/](http://www.clarussoft.com/)

Chapter 2 Handling Precautions

The following are precautions that must be followed to enjoy a long Samsung External Hard Disk Drive life.

NOTE: PLEASE READ AND UNDERSTAND ALL THE FOLLOWING PRECAUTIONS BEFORE PROCEEDING TO USE YOUR SAMSUNG EXTERNAL HARD DISK DRIVE

Regular Virus Scanning

Frequently scan the device for viruses and protect the device from virus infection.

Safely Remove Hardware

Always use the Safely Remove Hardware feature before shutting down the Samsung External Hard Disk Drive or disconnecting the USB cable.

Always Backup your important Data

The Samsung External Hard Disk Drive manufacturer does not guarantee data stored in the Samsung External Hard Disk Drive and will not assume responsibility for any mental or material damage incurred during data recovery.

Chapter 3 Terms and Concepts of Backup

Terms of Concepts of Backup

This chapter explains the concepts and terms you need to know before using Samsung Auto Backup.

- What is Backing Up ?

Backup means storing data safely on storage devices such as hard disks.

- Backup Source

Backup source is the files or folders that you want to backup.

- Backup Device

Backup device is the device (local hard disks, NAS, DVD-RAM, etc.) onto which you want to store the backup data. In the case of the Samsung Auto Backup program, the backup device is the Samsung External Hard Disk Drive.

- Scheduled Backup

In the scheduled backup, the software program runs the backup procedure according to a schedule you set in advance.

- Manual Backup

In the manual backup, you perform the backup procedure yourself using the software.

- Full Backup

All the files and folders in a backup source you specify are backed up.

- Incremental Backup

When you back up data from the same source repeatedly, only data that has changed or been added since the last backup is backed up.

Terms of Concepts of Backup

- Real-Time Backup

This backup procedure is performed in real time. That is, the backup source is monitored continuously, and when a folder or file is changed or added to it, the corresponding folder or file is backed up in real time.

- Backup Log

This log contains detailed information on the backup process, including the start time, completion time, number of files backed up, etc.

- What is Backup Information?

Backup Information' is actually a database of important information on your backups, such as which data Samsung Auto Backup backed up and the result of the process. Based on this database, the program performs its tasks such as backing up, restoring, and deleting.

- What is 'compression of Backup Information?

When a user deletes data such as a backup file and task log in Samsung Auto Backup, the actual files are deleted. However, the information related to the deleted files is only flagged as 'deleted' but actually still remains hidden within the backup information. Therefore, if there are too many deleted files, the program has to check through lots of information when performing the next backup, and the backup process is slowed down. Also, the size of the backup information file is itself limited. When the backup information file reaches a certain size, backups cannot be performed. To resolve these problems, the compression function removes useless data from the backup information and optimizes the remaining data.

- Defrag

In a disk drive, there is a 'platter' or disk that spins to read data and write data. The data that is read, is usually the program files. The data that is written is usually the information that you create

Terms of Concepts of Backup

with the program. For instance, if you are using Microsoft Word to create a letter, the letter is the data that is written to the disk. Remember that the disk is spinning when you are on your computer. When you save your data (letter), it is saved on various places on the disk. When you defrag your disk, you are putting all the pieces of your data (letter) in one place. When all the pieces of the files are put together, your drive is 'optimized'.

Chapter 4 Installing the Software

Installing the Software

Before Installation

Samsung Auto Backup is a backup solution that allows you to back up important data locally, or through a network. This solution provides various options that allow you to perform manual backups, as well as scheduled backups, and encryption the data during the process.

When you back up data using Samsung Auto Backup, you first should perform a full backup on all your data. After that however, you can perform real-time backups that monitor the source and back up only the data that has changed. In addition, this solution uses a disk-based backup method, minimizing the time required to restore the backup data significantly.

Using incremental backups, you only backup the data that has changed or added since the last backup. This option is much faster than a full backup, as it is only updating some files and not backing up all the files.

Installing the Software

Preparing your Computer

We recommend that you check the current condition of your system and take any necessary measures to optimize or defragment it before using this software.

For help with optimizing and defragmenting your computer, please see the manufacturer's recommendations.

If your system is unstable, for example if it displays blue screens, you encounter an error message while booting the system, or crashes frequently in everyday use, you must resolve these problems before using this software. If you think your system is stable, optimize it anyway by running the recommended optimizing software before using this software.

System Requirements

The following is a list of the minimum system specifications for Samsung Auto Backup:

TABLE 1. Minimum System Requirements

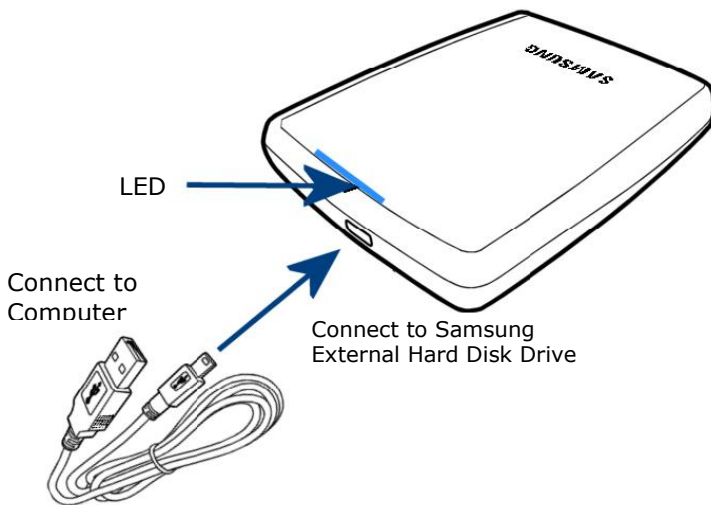
Component	Minimum Specification
CPU	Intel® Pentium® equivalent 1GHz
MEMORY	512 MB
HDD	500 MB
Operating System	Microsoft Windows® XP SP2 or Windows Vista™ or Windows 7 (32-bit only)
Web Browser	Microsoft Windows® Internet Explorer® 5.5

Installing the Software

Connecting the Drive to Your Computer

Contained in the packaging is a USB cable. The small end of the cable plugs into the Samsung External Hard Disk Drive and the large end plugs into your Computer. This is keyed so you can only plug it in one way.

Figure 4-1 Connecting your External drive to your Computer



Installing the Software

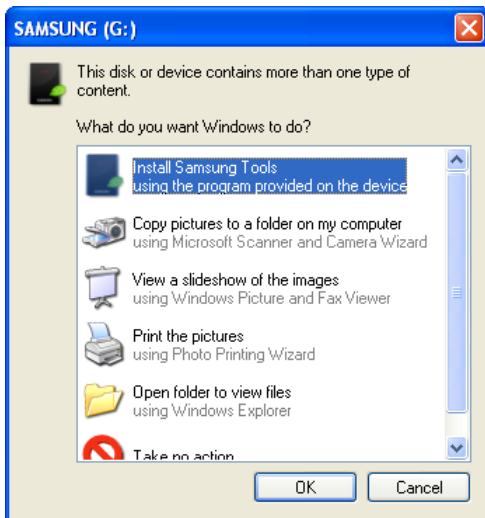
Installing the Software

When you connect the Samsung External Hard Disk Drive to your computer, there will be a short pause. After the pause, the **Welcome screen** appears.

NOTE: IF YOU SEE A MICROSOFT SCREEN APPEAR, CLICK 'OK'

NOTE: WHEN YOU INSTALL THE AUTO BACKUP PROGRAM ON THE WINDOWS 7, YOU SHOULD RUN THE "APPINST.EXE" MANUALLY IN SAMSUNG EXTERNAL HARD DRIVE. THE WINDOWS 7 DOES NOT SUPPORT THE AUTORUN FUNCTION.

Figure 4-2 Click **OK** if the Microsoft Install Wizard appears



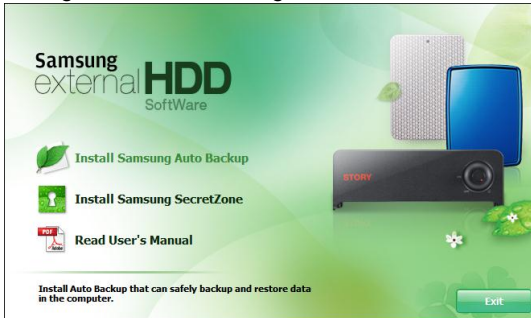
Installing the Software

Startup Screen

From the Samsung External Hard Disk Drive:

1. Click **Install Samsung Auto Backup**

Figure 4-3 Samsung External Hard Disk Drive Setup Screen

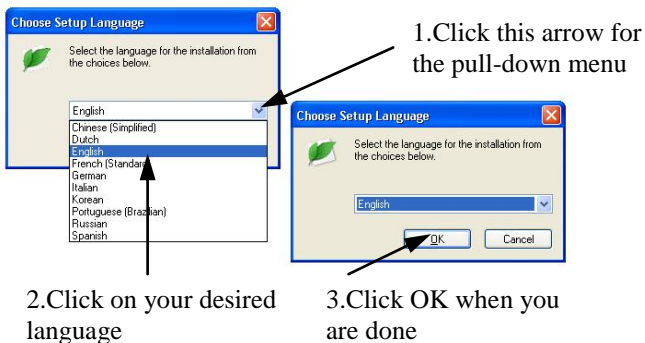


Choose your Language

From the Pull-Down, choose your desired language.

1. Click the **Pull-Down Arrow**
2. Choose your **language**
3. Click **OK**

Figure 4-4 Choosing the Language



Installing the Software

Welcome message

The **Welcome Screen** appears to indicate that the Install Wizard is ready to start installing your Auto Backup software. From the **Samsung Auto Backup Install Wizard**:

4. Click **Next >>**

Figure 4-5 Samsung Auto Backup Install Wizard



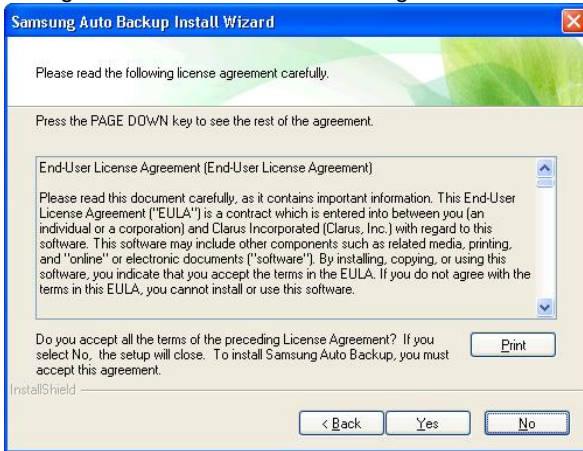
Installing the Software

License Agreement

The next screen is the end user license agreement. If you agree to the license agreement:

5. Click Yes

Figure 4-6 End User License Agreement



NOTE: PLEASE READ AND UNDERSTAND THE AGREEMENT.

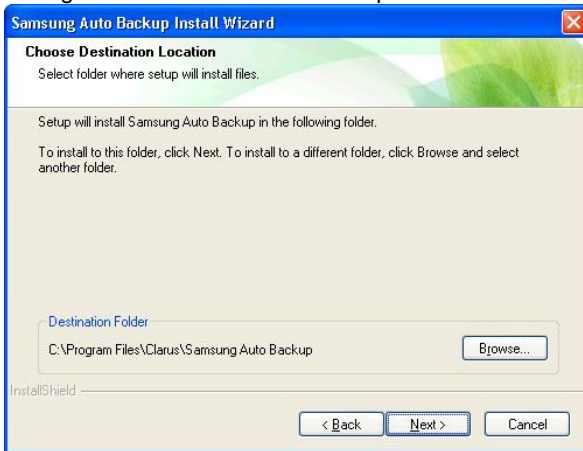
Installing the Software

Choose the Destination Folder

The following screen will determine where to install the software. The default folder is C:\Program Files\Clarus\Samsung Auto Backup.

6. You may click **Browse** and choose a **different folder** or click **Next>>** to use the default destination

Figure 4-7 Choose the backup destination



Installing the Software

Choose the **Program Folder** from the **Existing Folders**: where you would like to add the program icon. The default folder is the Windows Accessories.

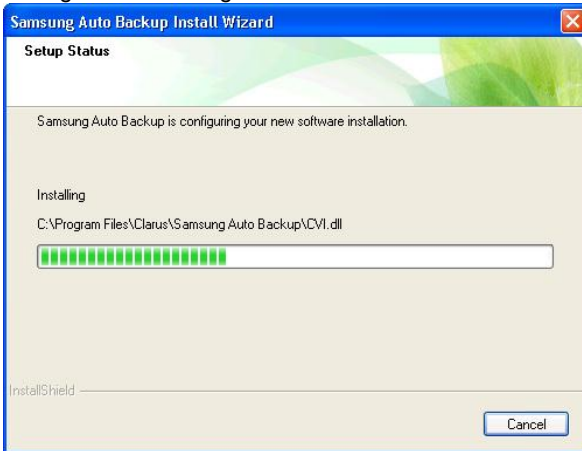
7. Click **Next>>**

Figure 4-8 Choose the folder for the program icon



The installation's progress bar appears.

Figure 4-9 Progress bar



Installing the Software

When the installation is complete, you may choose to reboot the system now or later.

8. After making a selection, click **Finish** to complete the installation.



NOTE: IT IS HIGHLY RECOMMENDED THAT YOU CHOOSE TO REBOOT YOUR COMPUTER SO THE PROGRAM CAN COMPLETE THE INSTALLATION, PLACING ICONS ON THE DESKTOP AND IN THE TASK BAR.

You have successfully installed the software for your Samsung External Hard Disk Drive.

The next step is to configure the software to your exacting specifications.

Chapter 5 Setting up the Auto Backup

Setting up the Auto Backup

Getting Started

Examples are used in this section to better explore the many options available.

The program starts by setting up what is backed up, when it is backed up, and to what folder it is backed up.

The first screen displays the version, serial number, and the program.

Figure 5-1 Samsung's Auto Backup Splash Screen



If the software does not automatically start, you may launch the program by clicking:

1. **Start -> Programs-> Samsung -> Samsung Auto Backup -> Samsung Auto Backup**

Setting up the Auto Backup

Setting up your Preferences

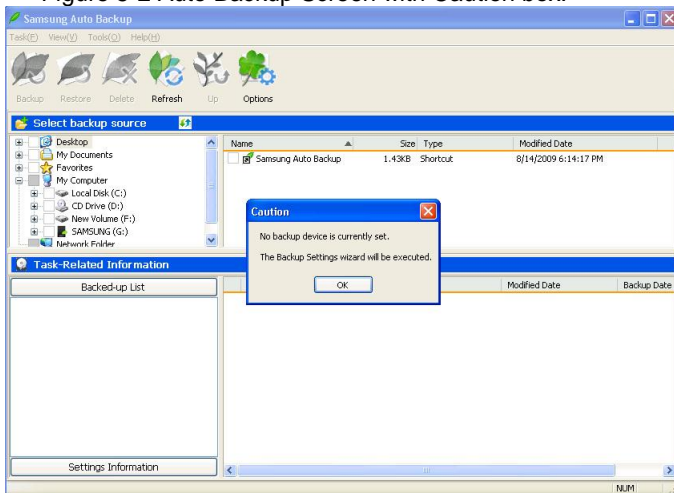
This is a one-time setup so you will get the most out of your Samsung External Hard Disk Drive. The Backup Settings Wizard will step through the options and preferences; such as what files to backup, when to back them up, and into what drive and folder you would like them backed up.

The first input screen looks as though there is a problem however, this 'Caution' box is only to let you know that nothing has been set up yet.

From the **Backup Wizard** screen:

2. Click **OK**

Figure 5-2 Auto Backup Screen with Caution box.



The first parameter to setup is to identify where your backed up data will go. On the backup destination

Setting up the Auto Backup

screen, you can choose the Samsung External Hard Disk Drive that is connected. If the Samsung External Hard Disk Drive is not connected, you cannot choose the backup destination.

Creating a Folder

Create our own folder and use the SafetyKey to protect it.

3. Click **New Folder...**
4. Type ***MyBackup***
5. Click **Confirm**

Figure 5-3 Create your Folder



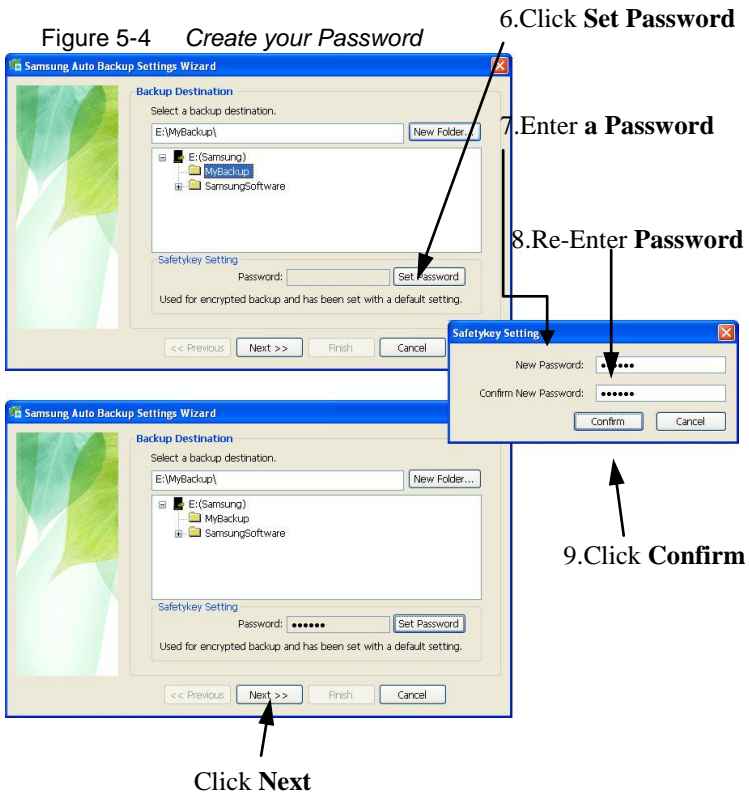
Setting up the Auto Backup

Creating a Password

Setting up your own, personal SafetyKey will ensure that you do not have to use the default password. From the Samsung Auto Backup Settings Wizard window:

6. Click **Set Password**
7. Enter a **SafetyKey** in the New Password: field
8. Retype the same **SafetyKey** in the Confirm New Password: field
9. Click **Confirm ->Next>>**

Setting up the Auto Backup



NOTE: SINCE YOU CAN SET THE ENCRYPTION SAFETYKEY ONLY ONCE DURING THE INITIAL SETUP STAGE, MAKE SURE NOT TO LOSE YOUR SAFETYKEY.

Setting up the Auto Backup

Setting the Task Log Options

Backup Options include backup file encryption, backup log, automatic backup engine termination, and various other backup-related settings.

- Backup File Encryption

Encrypts and backs up files. Encrypting does make the backup process slightly longer to complete, but does offer greater data protection and control over the device's space.

NOTE: THE ENCRYPTED BACKUP DATA CANNOT BE READ OR EXECUTED, IF NOT BE OPENED WITH AUTO BAKCUP PROGRAM. IF YOU MOVE THE ENCRYPTION BACKUP FILE FROM THE BACKUP DESTINATION TO ANOTHER LOCATION, IT MAY CAUSE FAILURE OF RESTORATION.

- Store file backup history

For repeated backups, several versions of a file can exist. This stores information on different file versions, including the file information and backup time with the file.

NOTE: ON THE FILE BACKUP HISTORY SETTING, SELECTING THE 'UNLIMITED' MAY CAUSE LACK OF CAPACITY ON ACCOUNT OF THE INCREASE OF FILE BACKUP HISTORY.

- Turn off the backup engine after completion

Turns off the backup engine automatically after completion.

Setting up the Auto Backup

- Minimize the backup engine during backup

Minimizes the backup engine to the task bar/system tray.

- Automatic Integrity Check

Automatically check whether the backup information is same as the backup data stored on the backup device.

- Shut down the system after completion

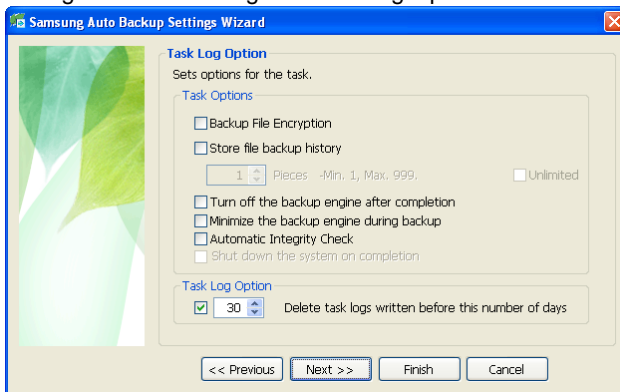
Shuts down the computer automatically after completion.

- Task Log Option

After finishing a backup, restoration, or deletion of your data, a log is generated. This log is maintained for the duration specified in this window.

10. Select your ***preferred options*** and click **Next>>**

Figure 5-5 Setting the Task Log Options



Setting up the Auto Backup

File Filter

The File Filter screen defines the file types to back up or exclude from the backup. File types are categorized in six groups:

- Office File

Files created using Microsoft Office.

- Document File

Any document file that was created using a word processing software product like Microsoft Word.

- Photo and Picture File

Files that are either photos or pictures. Photos can be from a camera and Pictures can be a graphic like an icon or any generic graphic that is supplied with a program.

- Movie, Music, and Video Files

Any files that are movie or video formats. Many companies send out video files with their product to help the buyer learn how to use their product.

- Compressed Files

Any files that may have been compressed for easier portability. Often these files have an extension of .zip.

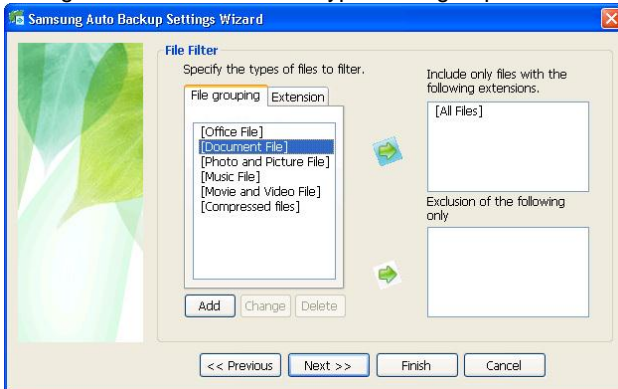
Setting up the Auto Backup

Backup Groups of Files

For the purposes of this manual, choose **Document Files**.

11. Choose **Document Files** and click the **green Right Arrow**

Figure 5-6 Choose the Type of file group or choose All



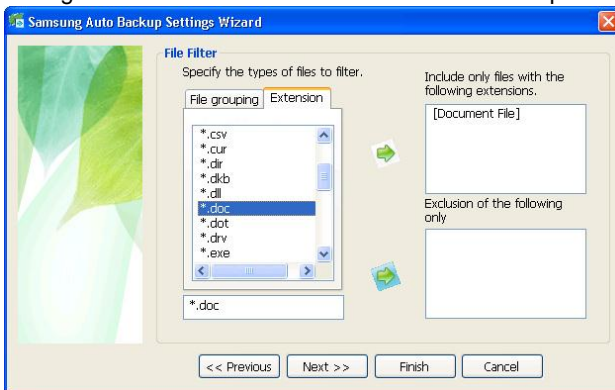
Setting up the Auto Backup

Backup Types of Files by Extension

To backup certain types of files, with the extension .DOC for instance:

12. Click the **Extension** tab
13. Click *.DOC
14. Click the bottom **Green Right Arrow**
15. Click **Next>>**

Figure 5-7 Choose the file extension to backup



If you click **Next** without making any change to the settings, all files will be backed up from your backup source.

Setting up the Auto Backup

Setting the Backup Schedule

This allows you to set a date and time to start the backup. From the **Set Schedule** screen:

16. Click **Add**
17. Click the **Frequency** pull-down menu and choose a **frequency**

NOTE: FREQUENCY SHOULD BE SET ACCORDING TO THE DATA AND HOW OFTEN YOU MAKE CHANGES. IF YOU MAKE MANY CHANGES IN A DAY, YOU WOULD CHOOSE EVERYDAY, ETC.

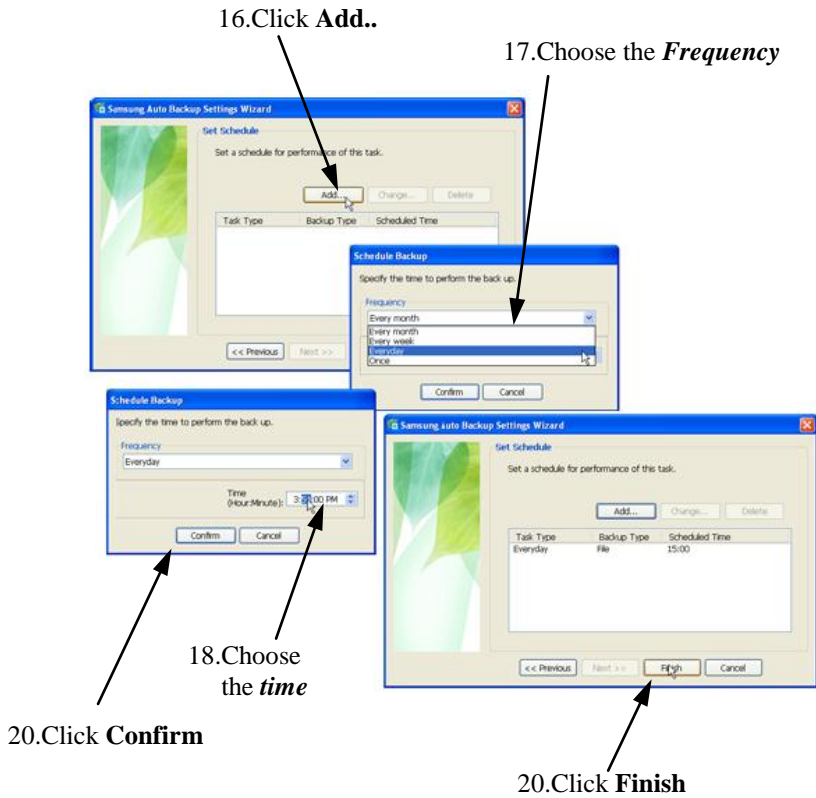
Now the day is set you should set a time to start your backup. It is recommended to set a time when the computer is not normally being used. Backing up your data while you are working on your computer may slow your computer down.

From the **Schedule Backup** screen:

18. Click the **Hour** and choose the hour
19. Click the **Minute** and choose the minute
20. Click **Confirm** -> **Finish**

Setting up the Auto Backup

Figure 5-8 Set the Day and Time



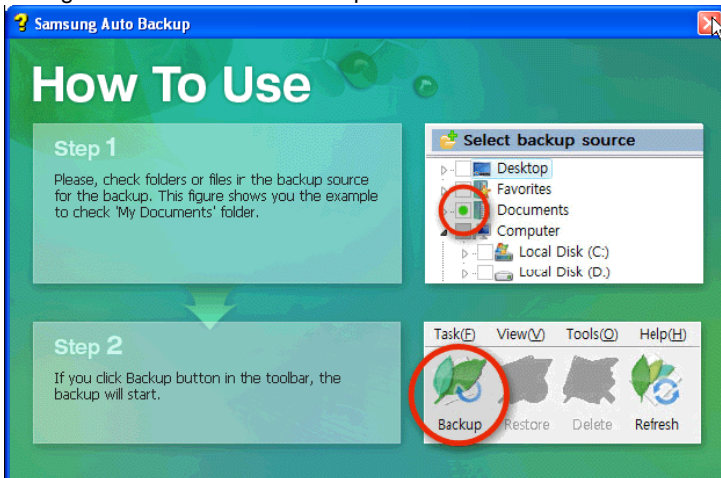
Chapter 6 Managing Data

Managing Data

Starting Data Management

After you have finished with the setup, the **How To Use** splash screen appears. Close this as you would with any Windows program by clicking the **X** in the upper right-hand corner of the screen.

Figure 6-1 “How To Use” Splash Screen



Managing Data

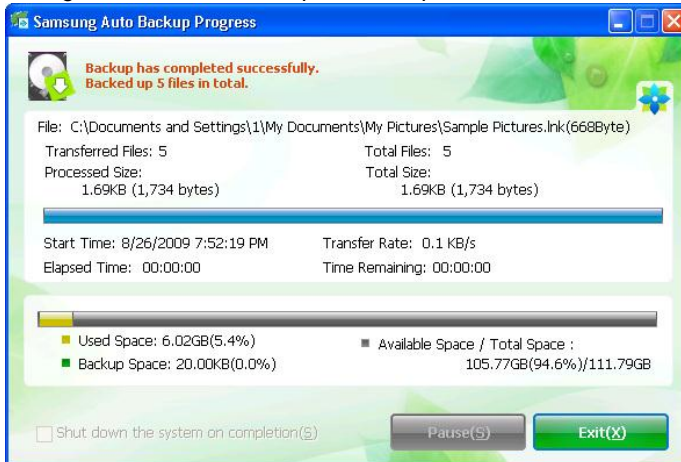
First Backup

After you close the splash screen, the **Auto Backup Progress** screen appear. The program is backing up your data as you specified and setting up your options.

By default, the **Auto Backup** program will backup everything in the 'My Documents' folder. This can be changed at any time.

1. Click **Exit**

Figure 6-2 First backup after setup



Clicking **Exit** takes you back to the **Samsung Auto Backup Main** screen.

Managing Data

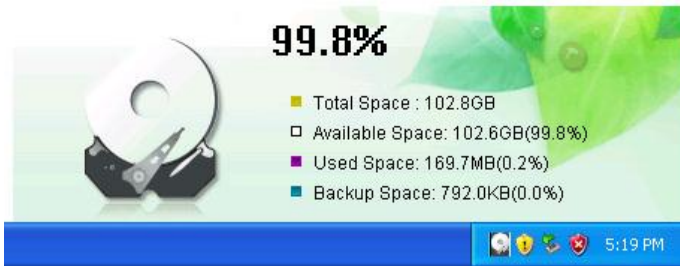
Disk Space Information

While the Samsung Auto Backup is running, an Auto Backup icon, placed in the task bar, keeps track of information about the backup device, including used space and backup space.

Double-clicking this icon will display the Total Space, Available Space, Used Space, and Backup Space on your Samsung External Hard Disk Drive.

To minimize the Disk Information window, click anywhere on the display.

Figure 6-3 Icon in Windows Tray



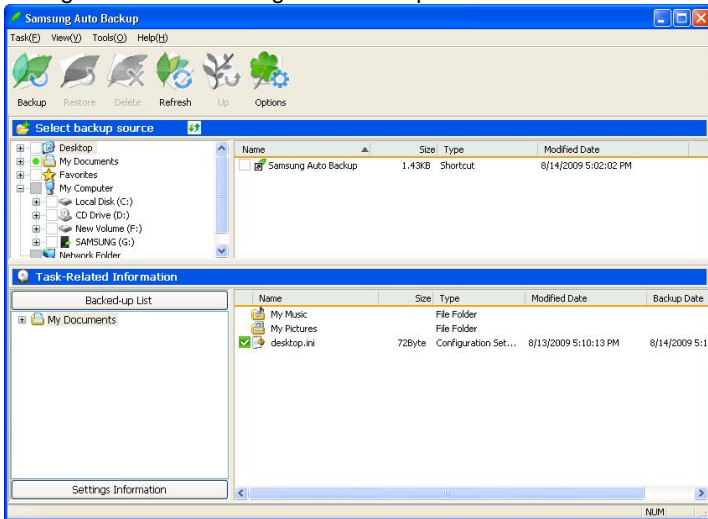
Click this icon to show
The disk drive's space information

Samsung Auto Backup Main Screen

The main screen is where you make any changes or modifications with your backup configuration.

Managing Data

Figure 6-4 Samsung Main Backup Screen



Menu Bar

The menu bar is located at the top of the main screen. It contains several menus such as Task, View, Tools, and Help.

- Task

Used to perform backup, restoration, deletion, etc.

- View

Used to control the look of the program windows.

- Tools

Used to set various options such as backup options, backup device, network connection, update, integrity check, and migration.

- Help

Display help.

Managing Data

Figure 6-5 Menu Bar



Task Menu

- Backup
Starts a manual backup of the source you selected.
- Restore
Restores the backup data you selected.
- Delete
Deletes the item (backup file, backup folder, task history, and task schedule) you selected.
- Exit
Quits Samsung Auto Backup.

View Menu

- Show tool bar
Shows or hides the tool bar.
- Show status bar
Shows or hides the status bar.
- Refresh
Refreshes the selected program pane's contents.
- Up

Managing Data

Navigates to the top folder of the selected folder or file.

Tools Menu

- Options

Sets various backup options.

- Backup device - sub-menu as follows:

- ▶ Change backup device (C)...

Changes the backup device

- ▶ Replicate backup device (R)...

Replicates the backup information or the backup device.

- ▶ Restore backup information (I)...

Changes the replicated backup information into the current backup information.

- Connect to network folder

Connects to a network folder to be used as a backup source.

- Disconnecting the network folder

Disconnects a network drive or folder.

- Migration

Runs a tool that replicates the files and folder structure to another storage device.

- Integrity check

Runs a tool which checks whether data stored on the actual backup device matches the backup information of Samsung Auto Backup.

- Compress backup info

Compresses the backup information.

Tools Menu Help

Managing Data

- Help

Shows help items.

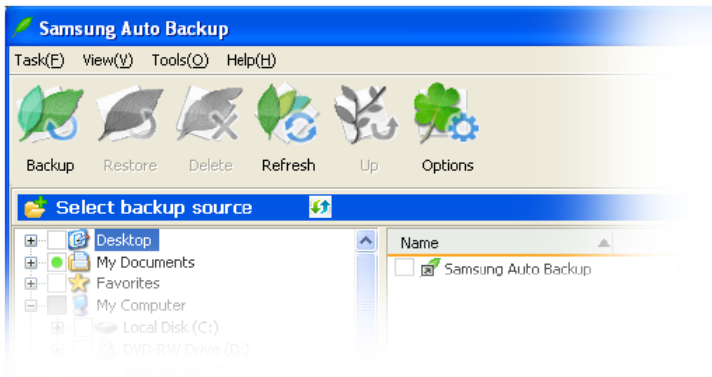
- About Samsung Auto Backup

Shows version information about Samsung Auto Backup.

Icon Bar

The icon bar is located just below the Menu Task bar at the top of the main screen. The icons launch the most frequently used functions for your convenience.

Figure 6-6 Icon Bar



- Backup

You can perform a manual backup by clicking Backup.

- Restore

By choosing a folder on your Samsung External Hard Disk Drive, you can click Restore to copy the folder or file.

- Delete

You can choose a folder or file on your Samsung External Hard Disk Drive and click Delete to delete the folder or file.

Managing Data

- Refresh

If the directories in either the source or destination window has changed, click Refresh to view the changes in either window.

- Up

If you are currently looking at a sub-folder (a folder under another folder), click Up to take you back to the previous folder.

- Options

Allows you to change the options setup when the program was first installed.

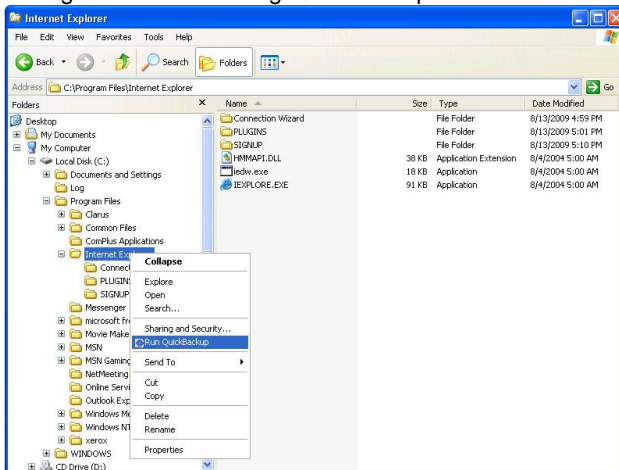
Quick Backup

The QuickBackup function allows users to use the backup system from Windows Explorer.

From your Windows Explorer:

1. Right-click on the **folder or file** to have backed up
2. Choose **Run QuickBackup**

Figure 6-7 Selecting QuickBackup Source



Managing Data

Files and folders are automatically saved as a backup source that you defined during setup.

3. When the backup has finished, click **Exit**

Viewing Backup Results

You can see the results of the backup process after performing manual or scheduled backups.

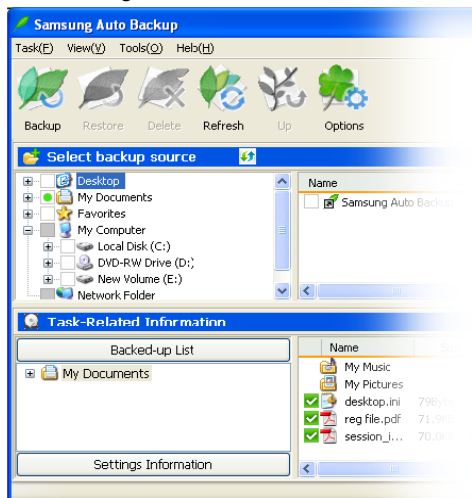
To view detailed backup results, from the **Task Related Information** window:

1. Click the **Backed-up List** bar under the **Task Related Information** window
2. Click on a **folder** in the **Backed up List**

You can also check the detailed backup results from the **Settings Information Windows** by clicking:

3. **Settings Information bar -> Task Log icon**

Figure 6-8 Settings Information Window

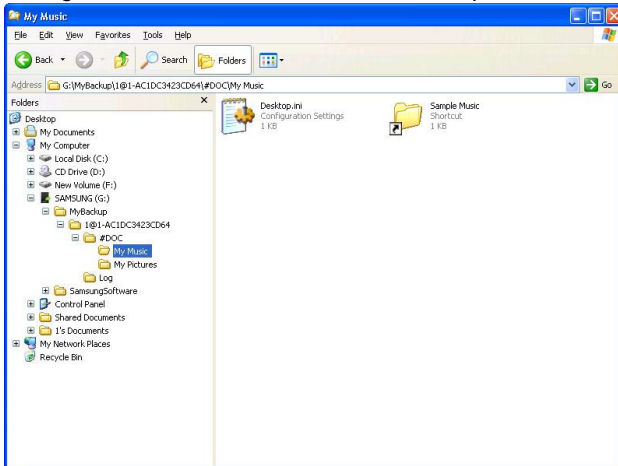


Managing Data

Check the Backup from Windows Explorer

If you open the folder set in the **Backup Settings Wizard** in Windows Explorer, you can see the following folder and confirm that the backup process is complete.

Figure 6-9 Check Files in Windows Explorer Screen



Chapter 7 Advanced

Changing Options

To change the initial backup options (backup file types, backup schedule, etc.), from the tool bar:

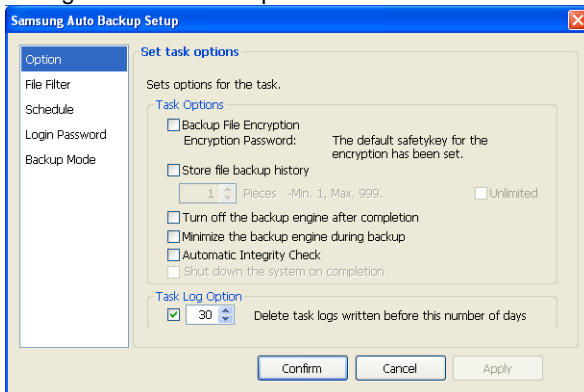
1. Click **Tools ->Options**
2. Change any **options**
3. Click **Confirm**

Set Task Options

Backup Options includes backup file encryption, log backup, automatic backup engine termination, backup engine optimization, automatic system shutdown, and various other backup-related settings.

For more information on the Task Options, please See **Chapter 5 in section "Setting the Task Log Options"**

Figure 7-1 Task Options Screen



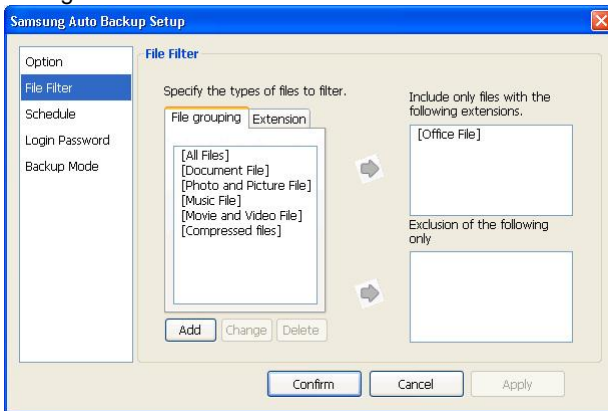
Advanced

File Filter

The File Filter screen defines the file types to back up or exclude from the backup. File types are categorized in six groups:

For more information on the File Filter options, please see **Chapter 5 in the section "File Filter"**

Figure 7-2 File Filter



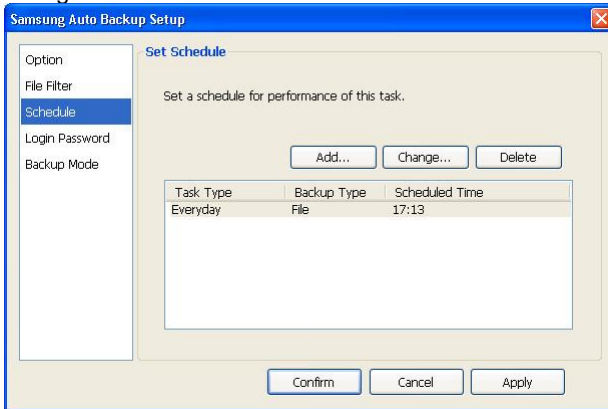
Schedule

Adding, changing, or deleting a schedule is performed from this screen. By clicking Add..., Change..., or Delete you can create as many backup schedules for as many file groups or types as you desire.

For more information on creating a schedule, please see **Chapter 5 in the section "Setting the Backup Schedule"**

Advanced

Figure 7-3 Schedule



Login Password

From this window, you can set a password for the backup program. This will prevent unauthorized persons from accessing your data.

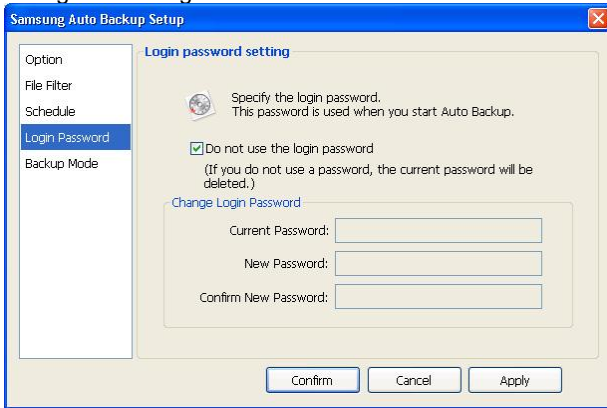
**NOTE: YOU MUST REMEMBER YOUR PASSWORD.
IT IS REQUIRED WHEN YOU START THE
PROGRAM**

It is always good to change the password on a regular schedule. From this screen, you can change the password by performing the following:

1. Click in the Current Password: box
2. Enter the **current password**
3. Click in the New Password box
4. Enter a **new password**
5. Click in the Confirm New Password: box
6. Reenter the **password**
7. Click **Apply -> Confirm**

Advanced

Figure 7-4 Login Password



Backup Mode

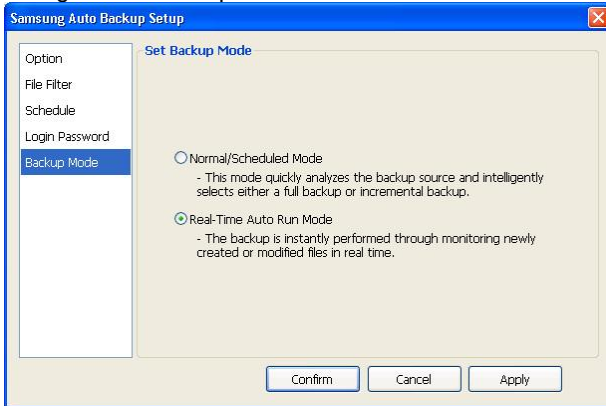
From the **Set Backup Mode** a Normal/Scheduled Mode or Real-Time Auto Run Mode is set.

- Normal/Scheduled Mode
 - Will analyze the current backup source (the data to be backed up) and decide whether to perform a full backup (all files) or if an incremental backup (only files that have been modified since the last backup) is sufficient.
 - ▶ An incremental backup will only backup those files which have been changed or created since the last backup.
- Real-Time Auto Run Mode
 - Choosing this will initiate an immediate, real-time backup.
 - A real-time backup will only backup those files which have been changed or created since the last backup through the real-time monitoring without analyzing backup sources. But, at the first time, after a full backup is completed successfully, a real-time monitoring will start.

Advanced

1. Choose the Backup Mode
2. Click **Apply** -> **Confirm**

Figure 7-5 Backup Mode



Deleting Backed up Data

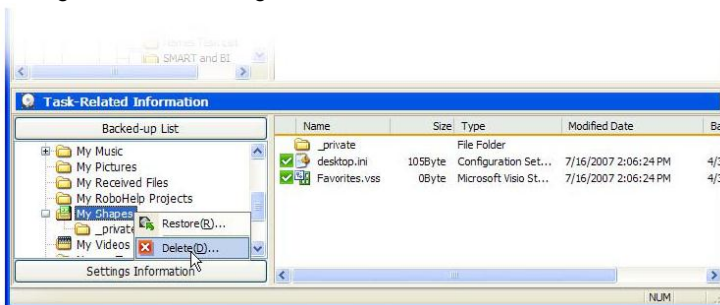
For data that should no longer be stored on the Samsung External Hard Disk Drive, there are four ways to run the Delete Wizard. After selecting the folder or file to delete:

- Option 1 Right-click the selected item and select Delete from the shortcut menu**
- Option 2 From the Menu bar, select *Task -> Delete***
- Option 3 From the Tool bar click Delete**
- Option 4 Press Del on your keyboard**

From the Samsung Auto Backup main window:

1. Click the **Delete** icon
2. Choose the **folder** or **file** to delete
3. Click **Delete**

Figure 7-6 Deleting Files



From the Auto Backup File Deletion Wizard screen, there are four different choices:

- Delete All Files

Deletes all the files and folders that have been selected.

Advanced

- Delete all backup history files

Deletes the entire backup history for the selected files.

- Delete backup files whose source folder no longer exists.

Deletes the backup files that no longer have source files.

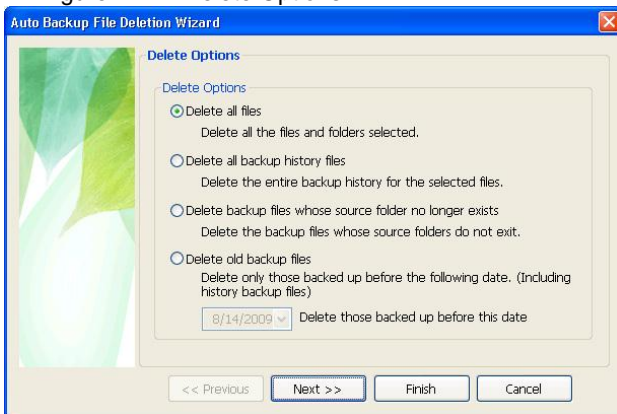
- Delete old backup files

Deletes only those files and histories of files backed up before a designated date.

For the purpose of this manual, choose:

4. Delete all files
5. Click Next >>

Figure 7-7 Delete Options



You are prompted to identify the files to delete.

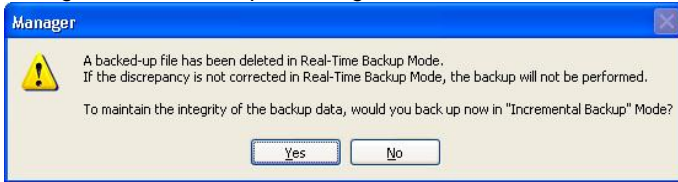
6. Choose the **File Group** or **File Extension** to delete
7. Click **Next>>**

A prompt displays asking if you would like to initiate a backup in 'Intelligent' mode.

8. Click **No**

Advanced

Figure 7-8 Backup in Intelligent Mode



After the analysis has completed:

9. Click **Exit**

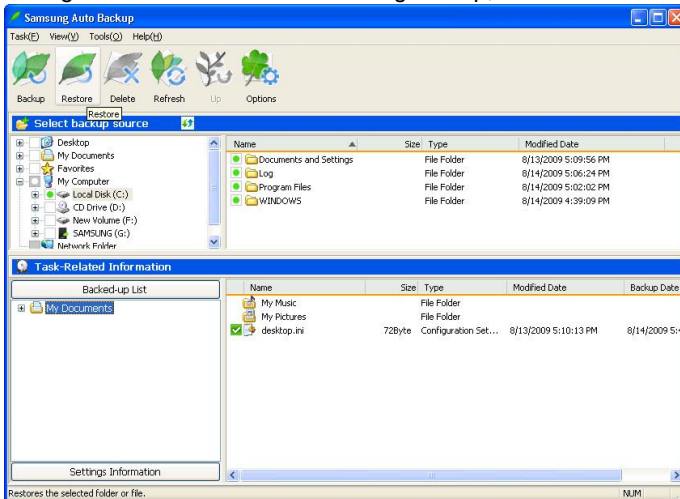
Restoring Data

The process of restoring data is very similar to deleting data using the icons along the top of the screen.

From the Icons along the top of the screen:

1. Click **Restore**

Figure 7-9 From the icons along the top, click **Restore**



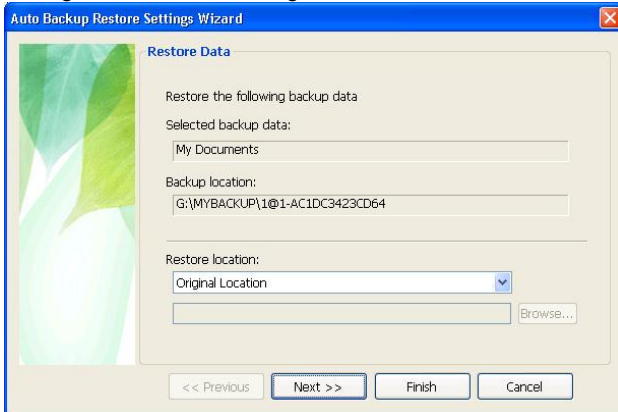
The default restore location is the original location from where the files were deleted.

From the **Restore Data** screen, choose the **Restore Location**.

2. Click **Next>>**

Advanced

Figure 7-10 Restoring data



From the **Set Restore Options** screen:

3. If you have a particular time that you would like restored, choose ***From the most recent backup***

There is an option to restore duplicate files as well however, for the purpose of this manual, we will restore from the most recent backup.

4. Click **Next>>**

Figure 7-11 Set Restore Options

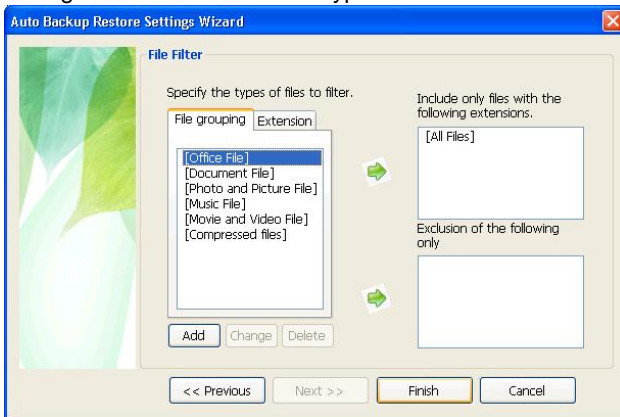


Advanced

If you only want certain groups or types of files restores, identify them in the File Filter screen. For the purposes of this manual, choose [**All Files**].

5. Click [**All Files**]
6. Click **Green Right Arrow**
7. Click **Finish**
8. Click **Exit** at the **Samsung Auto Backup Progress** screen

Figure 7-12 Choose the type of files to restore



Settings Information

The backup list window shows varied information about the backup, backup device, backup schedule, task log and a backed-up files list.

- Backup Information shows information about the current task options, backup mode, and file filter.
- Device Information Shows general information about the backup device, including total space, used space and free space on the backup device.

Backup Schedule shows information about the scheduled backup time.

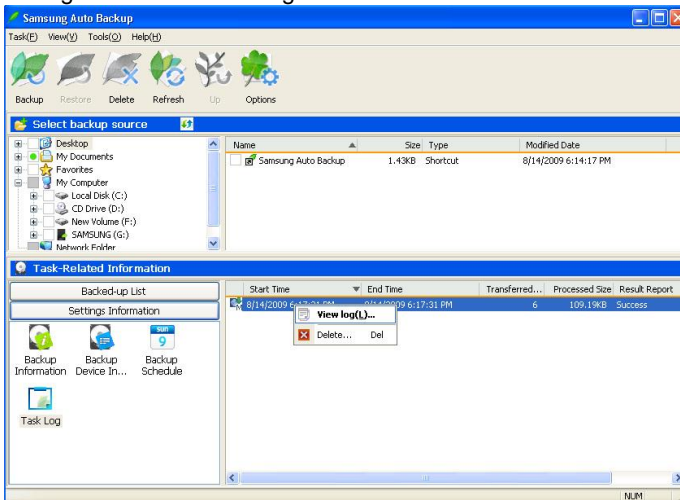
Advanced

Task Log

Shows a log list on the performed tasks. Double-clicking it will display a more detailed task log.

1. Right clicking on a newly backed up file will launch the **View Task Log Manual Backup** screen

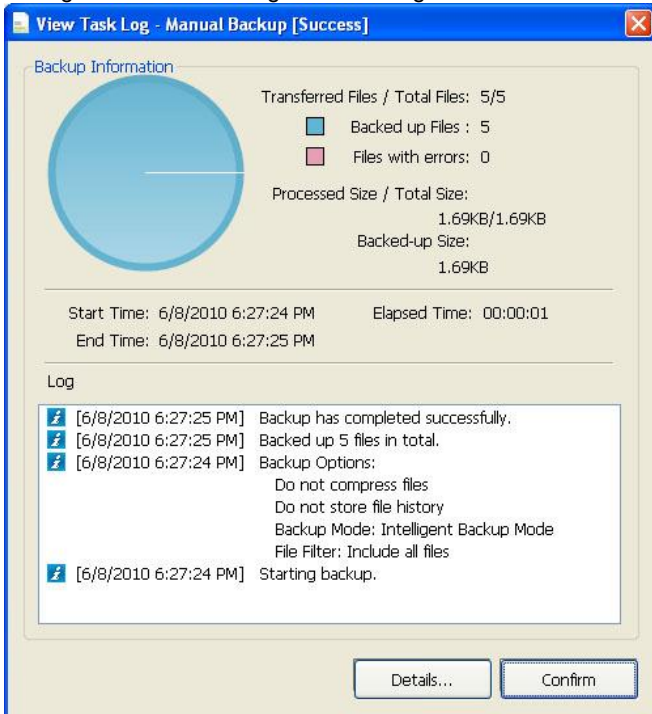
Figure 7-13 Task Log List Screen



Advanced

2. Choosing **Details...** from the View Task Log Manual Backup screen will launch the **View Details** screen

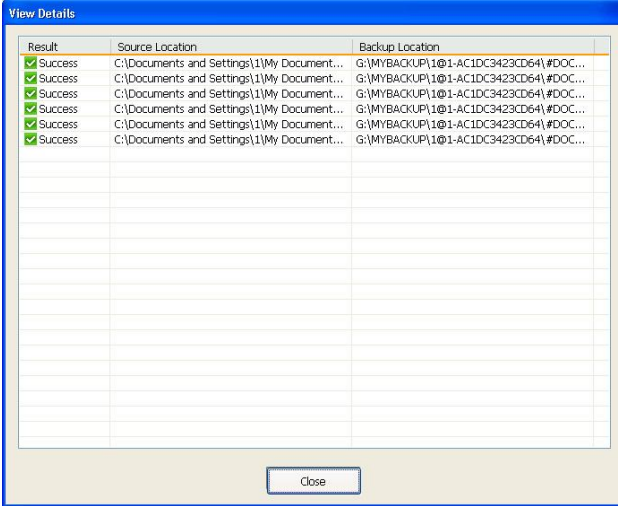
Figure 7-14 Viewing the Task Log



Advanced

3. Click **Close** to return to the View Task Log - Manual Backup screen
4. Click **Confirm** from the View Task Log screen to return you to the Main Screen

Figure 7-15 View Details

















Result	Source Location	Backup Location
✓ Success	C:\Documents and Settings\1\My Document...	G:\MYBACKUP\1@1-AC1DC3423CD64\#DOC...
✓ Success	C:\Documents and Settings\1\My Document...	G:\MYBACKUP\1@1-AC1DC3423CD64\#DOC...
✓ Success	C:\Documents and Settings\1\My Document...	G:\MYBACKUP\1@1-AC1DC3423CD64\#DOC...
✓ Success	C:\Documents and Settings\1\My Document...	G:\MYBACKUP\1@1-AC1DC3423CD64\#DOC...
✓ Success	C:\Documents and Settings\1\My Document...	G:\MYBACKUP\1@1-AC1DC3423CD64\#DOC...
✓ Success	C:\Documents and Settings\1\My Document...	G:\MYBACKUP\1@1-AC1DC3423CD64\#DOC...

Close

Advanced

The backed up list uses icons to show the location of the files and their status. The following table shows the meaning of each icon.

Table 7.1: Backup file status Icons

	The backup file exists, but the source file does not.
	The backup file is the same as the source file.
	The backup file is different from the source file.
	The backup folder is the same as the source folder.
	The backup folder exists, but the source folder doesn't.
	Indicates that the file has been encrypted and backed up and that the original data does not exist.
	Indicates that the file has been encrypted and backed up and is identical to the original.
	Indicates that the file has been encrypted and backed up and that the original is different
	The file has been backed up with backup history, and the source file doesn't exist.
	The file has been backed up with backup history, and it is the same as the source file.
	The file has been backed up with backup history, and it is different from the source file.
	Indicates that the file has been encrypted, log backup has been performed, and that the original data does not exist.
	Indicates that the file has been encrypted, log backup has been performed, and backup file is identical to the original..
	Indicates that the file has been encrypted, log backup has been performed, and backup file is not identical to the original.

Tools Menu

The following is an in-depth exploration of the options under the Tools Menu.

Setting the Backup Device

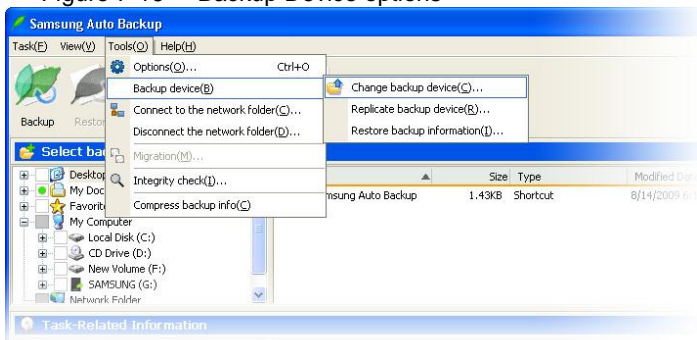
Backup Device Settings is comprised of:

- Change Backup Device
- Replicate Backup Device
- Restore Backup Information.

From the main menu:

1. Click **Tools**
2. Choose ***Backup Device***

Figure 7-16 Backup Device options



Advanced

Changing the Backup Device

You may need to change the backup device for various reasons. For example, if you want to use a different Samsung External Hard Disk Drive.

On the backup destination screen, you can only choose the Samsung External Hard Disk Drive that is connected. If the Samsung external hard disk is not connected, you cannot choose the backup destination. If you select the **Change backup device** option, the Backup Settings Wizard that appeared when you ran the program for the first time is displayed again. In the Backup Settings Wizard, you can change the backup device and other options.

NOTE: IF THE NEW BACKUP DEVICE WAS USED AS A BACKUP DEVICE BEFORE AND CONTAINS PREVIOUS BACKUP DATA, A LIST OF THE USERS WHO USED IT IS DISPLAYED. YOU CAN CONTINUE TO USE THE PREVIOUS BACKUP DATA BY SELECTING AN ENTRY FROM THIS LIST. OR YOU CAN CONFIGURE A NEW BACKUP ENVIRONMENT.

NOTE: ON THE BACKUP DESTINATION SETTING, SELECTING THE 'NEW CONFIGURATION' CAUSE THE WHOLE PREVIOUS BACKUP DATA LOSS.

If unauthorized persons used the previous backup data, the backup information in the data may have been revealed to them. Set a SafetyKey and Login Password to prevent further unauthorized access if several people are using the same backup device.

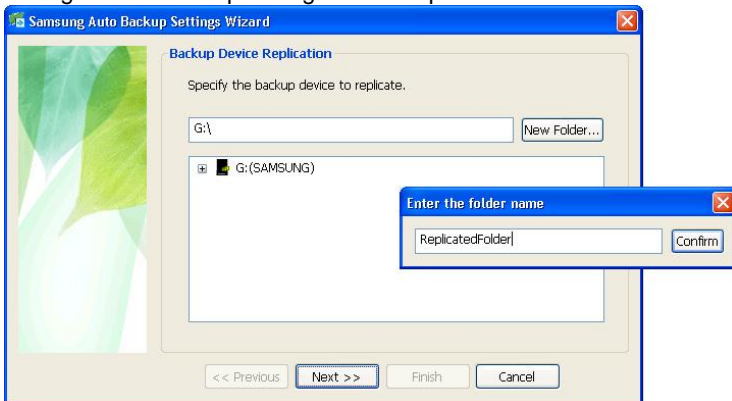
Advanced

Replicating the Backup Device

You can replicate the current backup device to a different backup location.

If you select the Replicate backup device option, the following Wizard appears.

Figure 7-17 Replicating the Backup Device



From the **Replicate Backup Device** screen, you can only choose the Samsung External Hard Disk Drive that is connected. If the Samsung External Hard Disk Drive is not connected, you cannot choose the backup destination.

From the **Replicate Backup Device** screen, select the **location of the backup device** onto which the backup data will be replicated

1. Click **Next** to navigate to the **Options for Backup Device Replication** screen

There are two types of backup device replication.

Option 1 One is **Replicate backup information** which replicates only the current backup information and options.

Advanced

Option 2 The other is **Replicate backup device** which replicates the current backup information, options and backup files.

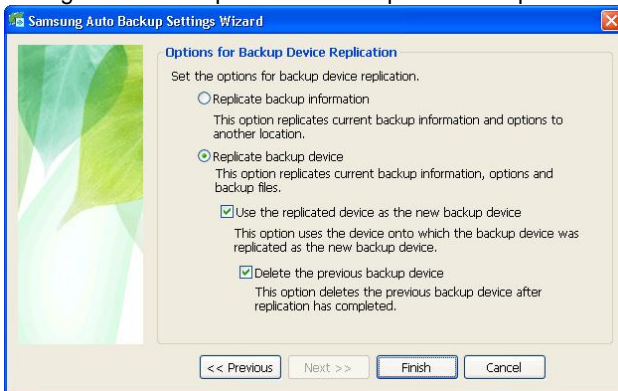
When you choose **Replicate Backup Device**, you can select the following options.

Option 1 Use the replicated device as the new backup device. This option uses the device onto which the backup device is being replicated as the new default backup device.

Option 2 Delete the previous backup device. This option deletes the previous backup device after replication is complete. This option is activated only when you select the Use the replicated device as the new backup device option.

2. Choose the **options** for your specific requirements
3. Click **Finish**

Figure 7-18 Options for Backup Device Replication



Advanced

Restoring the Backup Information

This process restores backup information that was stored in another location. The backup information is reverted to the time when the backup information was stored. Existing backup information is then deleted. After the restoration of backed up information, it is highly recommended to run an Integrity Check to match the backup information with the files stored on the backup device.

Using Migration

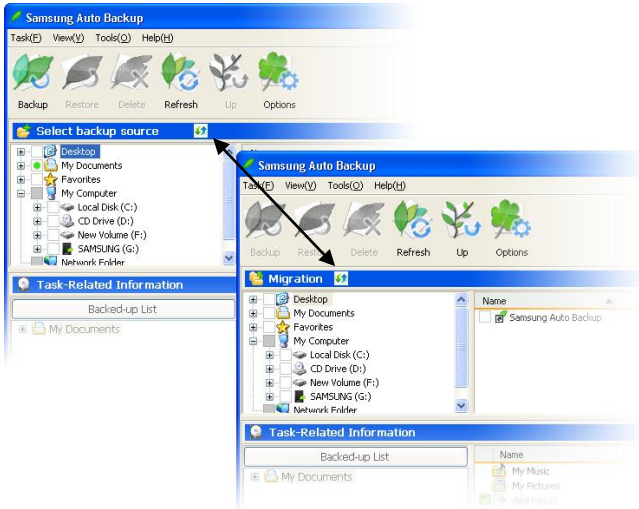
Migration is different from backup as it precisely copies the folder structure and files from the source drive to another drive.

Samsung Auto Backup creates a new folder with the user account name and the computer name and stores the files in this new folder. But migration maintains the same folder structure. Therefore, you can use this function when you want to replicate the folder structure of one computer in another computer. To use the migration function:

Advanced

1. Click the **toggle button** beside the title of the Backup Source window to switch to migration mode

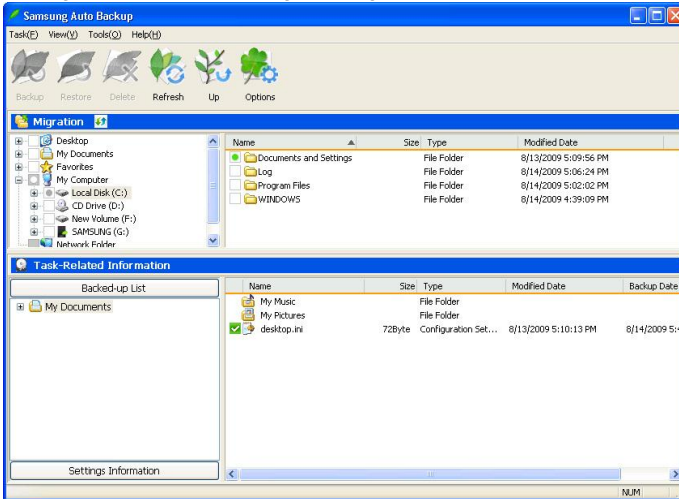
Figure 7-19 Switching to the Migration Mode



Advanced

2. Select the **folder(s)** or **file(s)** to migrate in the Migration (top) selection window

Figure 7-20 Selecting the Migration Source



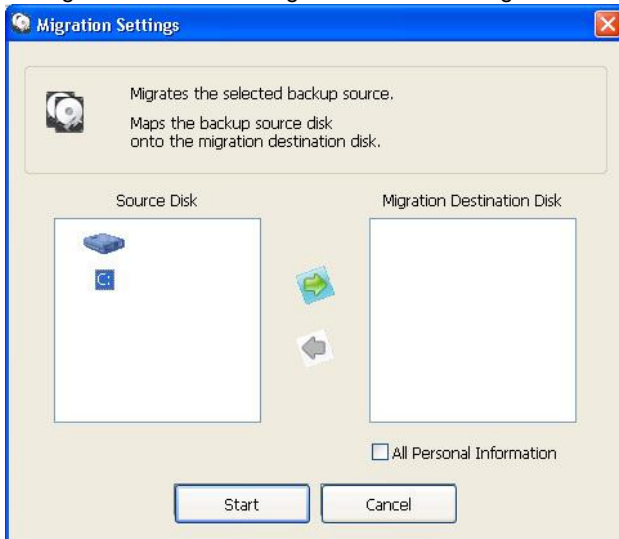
Advanced

From the Menu bar:

3. Click **Tools** -> **Migration**
4. Choose the **Source** from the left window
5. Click the **green Right Arrow**
6. Click **Start**

The migration path has been 'mapped'.

Figure 7-21 Choosing the Source and Migration Destination



Advanced

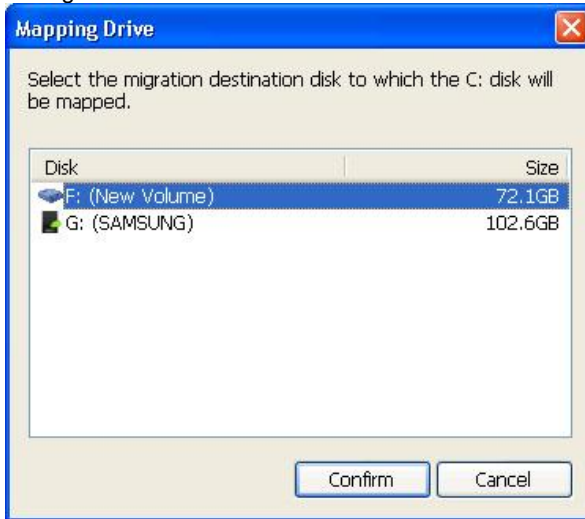
Next, identify the destination disk for the files. For example, if you just got another computer, you may choose to migrate the backed up information from your Samsung External Hard Disk Drive to your new computer.

7. Choose a **destination**

8. Click **Confirm**

From the pull-down menu, you may choose the **Default Destination** or use **New User Destination**.

Figure 7-22 Choose the destination



Choose the destination

9. Click **Confirm**

10. Click **Start** to begin the migration

The migration engine shows the progress of the migration process.

After completion of the migration, you can see a list of the migrated files in the View Details window.

11. Click **Close** to close the details screen

12. Click **Exit(X)** to go back to the Main screen

Connecting to a Network Folder

When the backup source is another computer on a network, from the **Tools** menu choose the **Connect to the network folder function** to add the source to the Source Selection window.

There are two options:

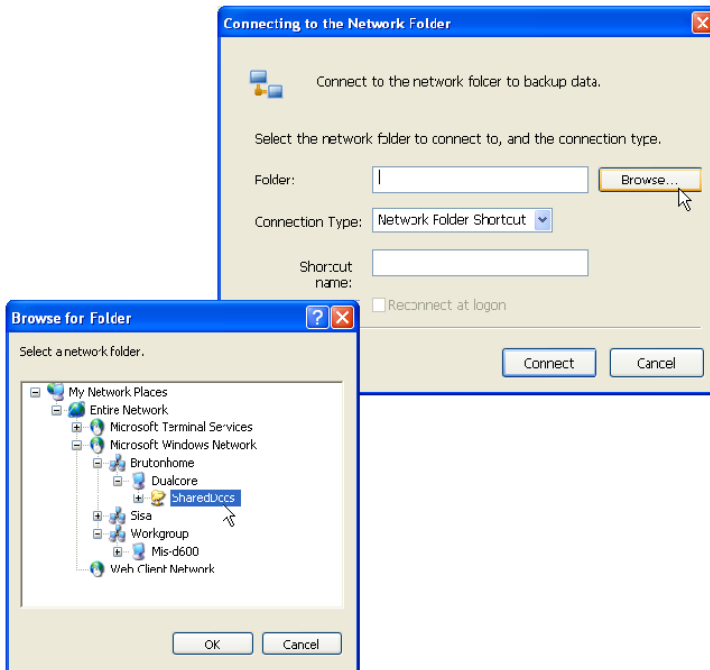
Option 1 You can select either Network Folder Shortcut

Option 2 Network Drive as the Connection Type

1. Click **Browse...**
2. Choose a **network folder**
3. Click **OK**
4. Enter a Shortcut name
5. Click **Connect**

Advanced

Figure 7-23 Connecting to the Network Folder



Network Drive assigns a drive letter to the network folder to connect the corresponding folder to the computer. Network Folder Shortcut creates a network folder in My Network Neighborhood instead of assigning a drive letter.

When the network folder is connected it appears in the backup source tree.

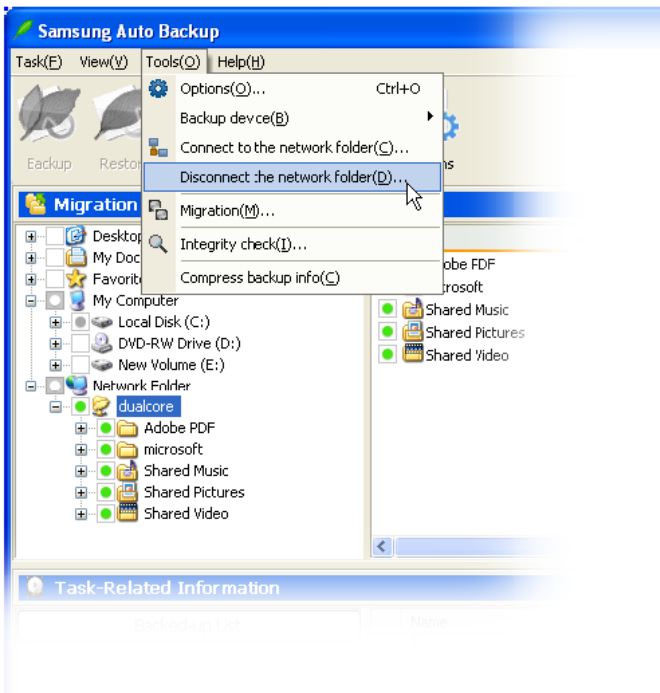
Advanced

Disconnecting a Network Drive

At some point, you may not want your network drive connected. To disconnect a network drive:

1. Click the network drive to disconnect
2. Click **Tools** -> **Disconnect Network Drive** -> **Confirm**

Figure 7-24 Disconnecting a Network Drive



Checking the Integrity of Backed up Data

As the basic backup units of Samsung Auto Backup are the file and folder, you can use Windows Explorer to access the files and folders within the backup data. Therefore, it is possible that you may accidentally change or delete files and folders on the backup device using Windows Explorer.

If you change the folders or files in the backup device manually, there can be discrepancies between Samsung Auto Backups information and the backup files stored on the device. As a result, the backed up data will become unreliable, and Samsung Auto Backup won't be able to restore it.

The Backup Data Integrity Check tool solves this problem. This tool checks whether the backup information of Samsung Auto Backup is the same as the backup data stored on the backup device, and corrects any discrepancy to match the backup files with the backup information.

This will keep your backup information synchronized with the actual backed up data.

The best way to maintain synchronization is not to change the backup files stored on the backup device in the first place.

One of the most important factors to Integrity Checks, is the time information of the computer. If the time zone of the computer changes after a backup was last performed, the Integrity Check tool may recognize the files as being changed.

NOTE: BE SURE TO CHECK THAT THE TIME ZONE IS CORRECT BEFORE USING THE TOOL.

Advanced

1. Select **Tools** -> **Integrity Check**

2. Click **Check(s)** to start the integrity check

The progress of the integrity check is displayed in a window. The result shows both deleted files and changed files. Deleted files are the files that exist in the backup information of Samsung Auto Backup but do not exist in the actual backed up data. Changed files are files that exist in the actual backed up data but do not match the backup information, as they were subsequently changed.

Messages will display showing changed and deleted files. If you want to correct the discrepancies, click the *Correct Error* button in the bottom right corner of the panel.

When the tool corrects an error caused by a deleted file, it deletes the information about that file from the backup information of Samsung Auto Backup. That is, it deletes the backed up data from the backup list.

For a changed file, it changes the backup information of Samsung Auto Backup according to the information of the corresponding file on the backup device.

Advanced

About Samsung Auto Backup

This menu allows you to check the product information on Samsung Auto Backup.

1. Click **Help** -> **About Auto Backup**

Figure 7-25 About Auto Backup



Index

B

- Backup Device
 - Device, Backup .. 9, 64, 65, 66, 67
- backup engine 29
- backup history 29
- Backup Information
 - Information, Backup 10, 59, 64, 68
- Backup Log
 - Log, Backup 10
- Backup Results
 - Results 45
- Backup Source
 - Source, Backup 9, 69
- Backup, Task Bar
 - Task Bar 1, 2, 5, 6, 8, 9, 10, 13, 14, 16, 18, 20, 23, 24, 25, 27, 32, 33, 34, 38, 39, 40, 41, 42, 43, 45, 46, 48, 53, 55, 58, 59, 63, 64, 65, 66, 67, 68, 69, 76, 77, 78

C

- Compress 42
- Compressed Files 31
- Connecting 15, 73, 74

D

- Date and Time
 - Time and Date 34
- Defrag 10
- Delete, Task Bar
 - Task Bar 41, 43, 53, 54, 67
- Disk Space 39
- Document File 30

E

- Encryption 29
- Exit, Task Bar
 - Task Bar 38, 41, 45, 55, 58, 72

F

- File Deletion Wizard 53
- File Filter 30, 58
- Folder
 - Creating 21, 26, 73, 74
- Full Backup
 - Backup, Full 9

G

- Groups 32

H

- Help, Menu Bar
 - Menu Bar 40, 42, 43, 78

I

- Incremental Backup
 - Backup, Incremental 9

L

- Language 17
- License 19

M

- Manual Backup
 - Backup, Manual .. 9, 60, 61, 62
- Migration 68
- Minimize 29
- Movie File 30
- Music File 30

P

- Password 27, 28, 65

Photo File..... 30
 Picture File..... 30
 Preferences..... 25

Q

QuickBackup
 Backup, Quick..... 44

R

Real-Time Backup
 Backup, Real Time..... 10
 Refresh..... 41, 44
 Replicate 66
 Restore13, 56, 57, 59, 76
 Restore, Task Bar
 Task Bar41, 42, 43, 56, 57, 58,
 64

S

Safely Remove Hardware 7
 Scheduled Backup
 Scheduled, Backup..... 9
 Show tool bar
 Menu 41

System Specifications 14

T

Task Log ... 29, 30, 45, 48, 60, 61,
 62
 Task, Menu Bar
 Menu Bar29, 30, 40, 41, 43, 45,
 48, 53, 60, 61, 62
 Tools, Menu Bar
 Menu Bar40, 42, 48, 64, 71, 73,
 75, 77

U

USB
 Cable, USB..... 7, 15

V

Video File 30
 View, Menu Bar
 Menu Bar40, 41, 60, 61, 62, 72

W

Windows Explorer 44, 46, 76