

Samsung SecretZone User Manual



Copyright© 2008 Clarus, Inc. All Rights Reserved.[Rev. 02
02/10/2009 Samsung SecretZone User Manual First edition October
2008 This revision - 03] Copyright © 2008 Clarus, Inc. All Rights
Reserved. No part of this document may be communicated,
distributed, reproduced, or transmitted in any form or by any means
without the prior written permission of Clarus, Inc., or Samsung
Electronics Co. except as allowed under the copyright laws. Though
every care has been taken to ensure the accuracy of this document,
Clarus, Inc. and Samsung Electronics Co., cannot accept
responsibility for any errors or omissions or for any loss, whether
legal or natural, occurring to any person when acting, or refraining
from action, because of the information contained herein.
Information in this document is subject to change without notice.
All brand and product names are trademarks or registered
trademarks of their respective companies. Samsung® and Clarus® ,
Inc. is a registered trademark of Samsung Electronics Co. and
Clarus, Inc. Samsung SecretZone is a trademark of Samsung
Electronics Co.

Microsoft® Microsoft, Encarta, MSN, Windows, and Windows
Vista™ are either registered trademarks or trademarks of Microsoft
Corporation in the United States and/or other countries.

IBM® , PC-DOS, PC are register trademark of International
Machine Corporation

Intel® and Intel® Pentium® is a registered trademark of Intel
Corporation in the United States and/or other countries.

Linux

© 2006 Red Hat, Inc. All rights reserved. “Red Hat,” Red Hat Linux,
the Red Hat “Shadowman” logo, and the products listed are
trademarks or registered trademarks of Red Hat, Inc. in the US and
other countries. Linux is a registered trademark of Linus Torvalds.

Patents

Samsung Electronics Co., Ltd. Moreover, Clarus, Inc. may have
patents or patent pending applications, trademarks, copyrights, or
other intellectual property rights covering subject matter in this
document. The furnishing of this document does not give the
recipient or reader any license to these patents, trademarks,
copyrights, or other intellectual property rights.

Please read and understand the complete contents of this manual.
The contents of this manual may be modified without prior notice.

For more information, please visit

Clarus, Inc. Homepage<http://www.clarussoft.com/>

CHAPTER 1	INTRODUCTION	5
	HANDLING PRECAUTIONS	7
	<i>Regular Virus Scanning</i>	7
	<i>Safely Remove Hardware</i>	7
CHAPTER 2	TERMS AND CONCEPTS	8
	<i>Idle Timeout</i>	9
	<i>Partition</i>	9
	<i>File Systems</i>	9
	<i>FAT16</i>	10
	<i>FAT32</i>	11
	<i>NTFS</i>	12
	<i>Volume</i>	12
	<i>Volume Image</i>	13
	<i>Virtual Drive</i>	13
CHAPTER 3	INSTALLING THE SOFTWARE.....	14
	INTRODUCTION	15
	BEFORE INSTALLATION	16
	PREPARING YOUR COMPUTER.....	17
	<i>System Requirements</i>	17
	CONNECTING THE DRIVE TO YOUR COMPUTER	18
	INSTALLING THE SOFTWARE.....	19
	<i>Welcome message</i>	19
	<i>Choose the preferred Language</i>	20
	<i>Install Wizard</i>	20
	<i>Installation Progress Bar</i>	21
	<i>Create Password</i>	22
	<i>Complete installation</i>	23
CHAPTER 4	SETTING UP THE SECRETZONE	24
	GETTING STARTED	25
	<i>Starting the Software</i>	25
	<i>Logging In</i>	26
	<i>Samsung SecretZone Main Screen</i>	26
	MENU CHOICES	28
	ICON DESCRIPTION	31

CHAPTER 5	CREATE A NEW VOLUME IMAGE	33
	CREATE NEW	34
	<i>Designating a Letter to your Drive</i>	<i>37</i>
	<i>Checking the new volume from Windows Explorer.....</i>	<i>42</i>
CHAPTER 6	WORKING WITH VIRTUAL DRIVE.....	43
	<i>Expand</i>	<i>44</i>
	<i>Changing the Name.....</i>	<i>46</i>
	<i>Create a New Volume</i>	<i>48</i>
	<i>Change a Volume Password</i>	<i>52</i>
	<i>Adding Users</i>	<i>53</i>
	<i>Deleting Users.....</i>	<i>56</i>
	<i>Dismounting a Virtual Drive.....</i>	<i>57</i>
	<i>Mounting a Volume Image to a Virtual Drive.....</i>	<i>58</i>
	<i>Deleting a Volume Image.....</i>	<i>59</i>
CHAPTER 7	CREATING AN EXECUTABLE IMAGE	60
	CONVERTING A VOLUME	61
	<i>Launching the Image File</i>	<i>65</i>

Chapter 1 Introduction

Congratulations on becoming an owner of the *Samsung External Hard Disk Drive* with SecretZone. You made an excellent choice and we hope you will enjoy all its capabilities.

SecretZone allows you to create multiple virtual drives on the *Samsung External Hard Disk Drive*.

Samsung's SecretZone protects important files and data in the form of software-based 128-bit AES, 256-bit AES, and Blowfish 448 encryption. The external drive owner's data is also locked with a password which ensures data security. In addition to the freedom of knowing that your data is secure, you can transfer your secured data from one *Samsung External Hard Disk Drive* to another. No more transporting information on a memory stick that can be easily lost, stolen, or misplaced.

**NOTE: PLEASE READ AND UNDERSTAND THE
COMPLETE CONTENTS OF THIS MANUAL.
THE CONTENTS OF THIS MANUAL MAY BE
MODIFIED WITHOUT PRIOR NOTICE.**

***Inquiries Clarus, Inc. Homepage
<http://www.clarussoft.com/>***

Handling Precautions

The following are precautions that must be followed to enjoy a long Samsung External Hard Disk Drive life.

NOTE: PLEASE READ AND UNDERSTAND ALL THE FOLLOWING PRECAUTIONS BEFORE PROCEEDING TO USE YOUR SAMSUNG EXTERNAL HARD DISK DRIVE

Regular Virus Scanning

Frequently scan the device for viruses and protect the device from virus infection.

Safely Remove Hardware

Always use the Safely Remove Hardware feature before shutting down the *Samsung External Hard Disk Drive* or disconnecting the USB cable.

Chapter 2 *Terms and
Concepts*

Idle Timeout

As long as the *Samsung External Hard Disk Drive* is receiving input or doing a task, the drive is 'active'. When there is no activity for a set period of time, the drive becomes 'inactive'. When the drive is 'inactive' it is called 'Idle' and the drive will come to a 'rest'. You set the 'Idle Timeout' to start when there has been no activity for a period of time by entering a time in this field. For instance, if you want the drive to rest if there has been no activity for 10 minutes, you would enter a '10" in the Idle Timeout field. After 10 minutes of inactivity, the drive would come to a rest until it detects activity again.

Partition

Most operating systems, such as Windows NT or Windows XP, allow users to divide a hard disk into multiple partitions, in effect making one physical hard disk into several smaller logical hard disks.

There are many reasons to partition a hard drive but the most widely used is to have one partition that contains all of the programs and one partition that contain all the data. Using this type of partitioning makes backing up your data much easier since it is all contained on one partition. As well, if the operating system has any problems, it is much easier to format and reinstall the operating system.

Partitions are identified by a drive alpha name like the "C" drive or the "G" drive.

File Systems

A File System is how the computer keeps track of where all the files are on the disk. Like a Table of Contents, the File System on a

Terms and concepts

computer is referenced whenever you look for, or write to, a file. Types of File Systems are FAT16, FAT32, and NTFS. The following will give a brief explanation of each File System's Pros, Cons, and the primary audience for the File System.

FAT16

FAT is an abbreviation for File Allocation Table. The FAT file system is straightforward and is supported by most existing operating systems for personal computers. This makes it an ideal format for solid-state memory cards and a convenient way to share data between operating systems.

TABLE 1. Pros and Cons of FAT16

Pros	Cons	Used Mostly For:
Can read/write on most operating systems (Windows and Macintosh).	If you lose power while working, you may corrupt the FAT and you take a chance of losing your data.	Non-IT environments. More for home or individual use.
File transfer using a disk is more probable since file sizes must be smaller than with NTFS	Can only be partitioned up to 2 gigabytes.	

FAT32

FAT32 is used to create much larger partitions than what you can with FAT16.

NOTE: FOR THE SAMSUNG SECRETZONE, THE MAXIMUM FILE SIZE IS 2 GIGABYTES.

TABLE 2. Pros and Cons of FAT32

Pros	Cons	Used Mostly For:
Can read/write on most operating systems	Can only handle files up to 4 Gigabytes	Non-IT environments. More for home or individual use
Partitions can be as large as 2 Terabytes	Partitions using a Windows operating system can only be as large as 32 gigabytes	
File transfer using a disk is probable since file sizes must be smaller than with NTFS	If you lose power while working, you may corrupt the FAT and you take a chance of losing your data	

NOTE: THE FAT32 FILE SYSTEM LIMITS THE SIZE OF ANY FILE ON THE DRIVE TO A MAXIMUM OF 4GB. TO ENSURE RELIABLE OPERATION UNDER FAT32, SECRETZONE LIMITS EACH VIRTUAL DRIVE'S SIZE TO A MAXIMUM OF 2GB. WINDOWS PC OWNERS WHO WISH TO UTILIZE CAPACITY GREATER THAN 2GB SHOULD REFORMAT THEIR EXTERNAL SAMSUNG DRIVE TO NTFS IN THE WINDOWS OPERATING SYSTEM

NTFS

NTFS is an abbreviation for Windows NT File System or is sometimes called New Technology File System. If you are familiar with using paper files, the same concept applies here. NTFS is the way in which the operating system (Windows NT, XP, etc) organizes the files on the drive. NTFS is quite secure and robust. It provides security by supporting access control and ownership privileges, meaning you can set permission for groups or individual users to access certain files.

TABLE 3. Pros and Cons of NTFS

Pros	Cons	Used Mostly For:
Very secure. You can setup groups with different permissions to different files	No file system checker or defragmentation option	Users with a professional IT administrator
Can support files up to 4 gigabytes	There is no way to retrieve user data if accidentally erased	Applications require files over 4 gigabytes
Can maintain file system for partitions or drives that are 137 gigabytes and larger	Limited maintenance tools	Partition/Hard Drive is more than 137 gigabytes

Volume

A drive Volume is simply the name that you give to a partition. It is often referred to as the Volume Name. So, let's say that you have two partitions; one is for your programs and one is for your data. The partition for your programs may be called PROGRAMS C:. The drives volume name is then PROGRAMS C:.

Volume Image

The Volume Image is the contents of the volume. So the Programs C: volume contains all of your programs. The Image of that volume would be all of your programs.

Virtual Drive

A virtual drive is a part of the whole drive. So, for instance, if you create a new Volume and name it the "G" drive, that has now become a virtual drive. Since the whole Hard Disk Drive is also called a drive, when you create a partition you also call that a drive - but it is not the whole Hard Disk Drive, it is only a part (or volume) on the Hard Disk Drive. So, just as a room in your house is not the whole house, a virtual drive on a Hard Disk Drive is not the whole drive.

Chapter 3 *Installing the
Software*

Introduction

Samsung SecretZone is a software program that runs in the MS windows environment and protects personal information.

If you want to keep private information or other important information from others, including your colleagues at work and your family members, or if you want to move your data to a different location, you can use the Samsung SecretZone, the secure, perfect solution to do these tasks easily and conveniently.

You can think of Samsung SecretZone as a safe within your computer, and store your important data in the safe.

Before Installation

Samsung SecretZone is a software program that runs in the Microsoft Windows environment and protects personal, private information.

If you want to keep private information private - important information unreadable to others - keep your sensitive data with you at all times - you can use the SecretZone™ program provided on the sleek *Samsung External Hard Disk Drive*. Have the confidence that your data is secured using software-based 128-bit AES, 256-bit AES, or Blowfish 448 encryption. You can think of Samsung SecretZone as a safe within your computer.

Preparing your Computer

We recommend that you check the current condition of your computer and take any necessary measures to optimize or defragment it before using this software.

For help with optimizing and defragmenting your computer, please see the manufacturer's recommendations.

If your system is unstable, for example if it displays blue screens, you encounter an error message while booting the system, or crashes frequently in everyday use, you must resolve these problems before using this software. If you think your system is stable, optimize it anyway by running the recommended optimizing software before using this software.

System Requirements

The following is the minimum system specifications for Samsung SecretZone:

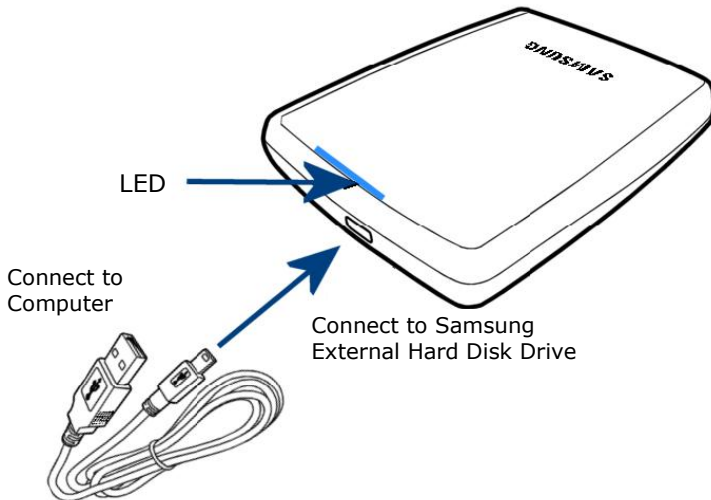
TABLE 1. Minimum System Requirements

Component	Minimum Specification
CPU	Intel® Pentium® equivalent 1GHz
MEMORY	512 MB
HDD	500 MB
Operating System	Microsoft Windows® XP SP2 or Windows Vista™ or Windows 7 (32-bit only)
Web Browser	Microsoft Windows® Internet Explorer® 5.5

Connecting the Drive to Your Computer

Contained in the packaging is a USB cable. The smallest end of the cable plugs into the *Samsung External Hard Disk Drive* and the larger end plugs into your Computer. This is keyed so you can only plug it in one way.

Figure 3-1 Connecting your External drive to your Computer



Installing the Software

When you connect the *Samsung External Hard Disk Drive* to your computer, there is a short pause. After the pause, the Welcome screen appears.

Welcome message

The first screen is the Welcome Screen. To continue on to the installation:

1. Click Install Samsung SecretZone

Figure 3-2 Samsung SecretZone Install Wizard Welcome



NOTE: WHEN YOU INSTALL THE SECRETZONE PROGRAM ON THE WINDOWS 7, YOU SHOULD RUN THE "APPINST.EXE" MANUALLY IN SAMSUNG EXTERNAL HARD DRIVE. THE WINDOWS 7 DOES NOT SUPPORT THE AUTORUN FUNCTION.

Choose the preferred Language

The first options to choose is the preferred language. From the **Choose Setup Language** pull-down:

2. Choose the *preferred language*

Figure 3-3 Use the Pull-Down to choose the Language



Install Wizard

The **Samsung SecretZone Install Wizard** will guide you through the steps for installing the SecretZone software. From the Welcome screen:

3. Click **Next>**

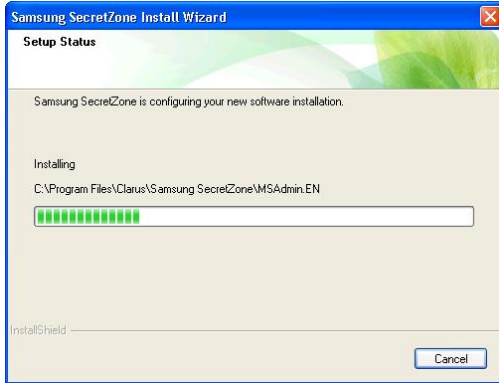
Figure 3-4 Install Wizard will guide you through the setup



Installation Progress Bar

The **Progress Bar** indicates how far the installation has gone and how much further it has to finish.

Figure 3-5 Installation Progress Bar

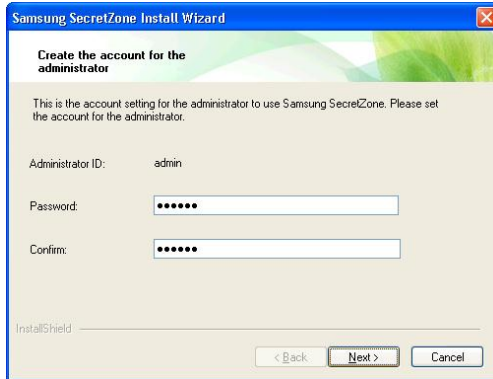


Create Password

To start using the SecretZone software, the Administrator password must be setup. From the **Create the account for the administrator** screen:

4. Click in the box to the right of Password and enter a password
5. Click in the box to the right of Confirm and re-enter the same password
6. Click **Next>**

Figure 3-6 Creating the Administrator Password



NOTE: WHATEVER YOU CHOOSE FOR A PASSWORD - PLEASE WRITE IT DOWN AND KEEP IT IN A SAFE PLACE. THERE IS NO OPTION TO RETRIEVE A PASSWORD.

Complete installation

Provided that the installation was successful, the final **Samsung SecretZone Install Wizard** screen appears.

7. Click **Finish**

Figure 3-7 Installation complete



Chapter 4 ***Setting Up the
SecretZone***

Getting Started

In this section, examples are used to better explore the many options available.

Now that the software has been installed, start the SecretZone software to create virtual drives.

From the **Windows Desktop**:

1. Double click the **SAMSUNG SECRETZONE** icon

Starting the Software

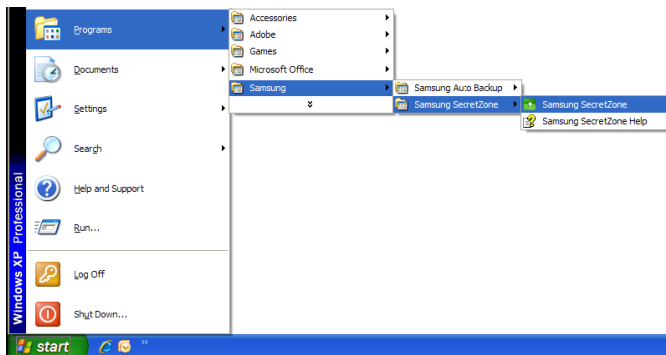
Figure 4-1 Samsung SecretZone Icon



If you do not see the Samsung SecretZone icon on your desktop:

Click **START -> PROGRAMS -> SAMSUNG -> SAMSUNG SECRETZONE -> SAMSUNG SECRETZONE**

Figure 4-2 Launch SecretZone from the Start Menu



Logging In

The first screen is the **Login for Administrator/User** prompt. Make sure that THE ADMINISTRATOR check box is checked.

2. Click in the Password field
3. Enter your PASSWORD
4. Click **OK**

Figure 4-3 Login Screen

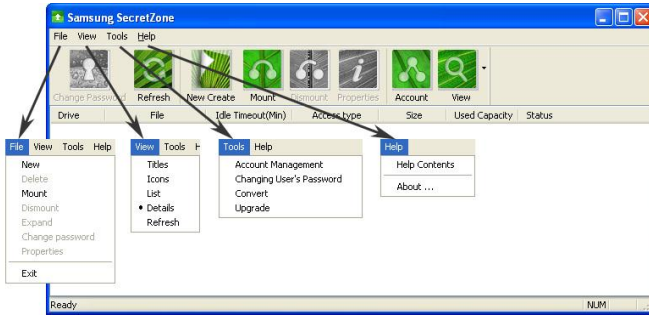


Samsung SecretZone Main Screen

The following screen is the **Samsung SecretZone Main** screen. All changes or modifications are created from this screen.

Setting Up the SecretZone

Figure 4-4 Samsung SecretZone Main Screen



Menu Choices

Along the very top of the screen is the Menu items. The following is a description of every menu item:

File

- New
Create a new volume image and mount volume image to virtual drive.
- Delete
Deletes the volume image only from the entry list, without actually deleting the volume. If you want to delete a volume image from the entry list, it needs to be disconnected first from the virtual drive.
- Mount
Makes the Virtual Drive visible and assigns a volume image to virtual drive
- Dismount
Takes the Virtual Drive off so it is not accessible.
- Expand
Expands the size of a volume image. Expanding the volume image does not affect the existing data.
- Change Password
Changes password for the selected volume image. This does not change the login password.
- Properties
Provides all the information on volume image and virtual drive.
- Exit

Exits the program

View

- Tiles

View list of the volume image or virtual drives in a tiled format.

- Icons

View list of the volume image or virtual drives in an icon format.

- List

View list of the volume image or virtual drives in a list format

- Details

View list of the volume image or virtual drives a detailed format

- Refresh

Refreshes the list the volume image or virtual drives

Tools

- Account Management

Administration's tool for creating and modifying all volume images and virtual drives. As well, persons with login ID's can modify their personal accounts.

- Change User's Password

Administration's tool for creating and modifying all passwords. As well, persons with login ID's can modify their personal passwords.

- Convert

Converts an image file (MSR) into an executable file (EXE) or vice versa.

Setting Up the SecretZone

After converting an image file into an executable file, you can use it in another system by connecting it to a virtual drive.

- Upgrade

This option will upgrade your current volume image file with the latest encryption. This upgrade offers an even higher level of security for your sensitive information.

Help

- Help Contents

Click the Help menu to search for help on any Samsung SecretZone topic.

- About

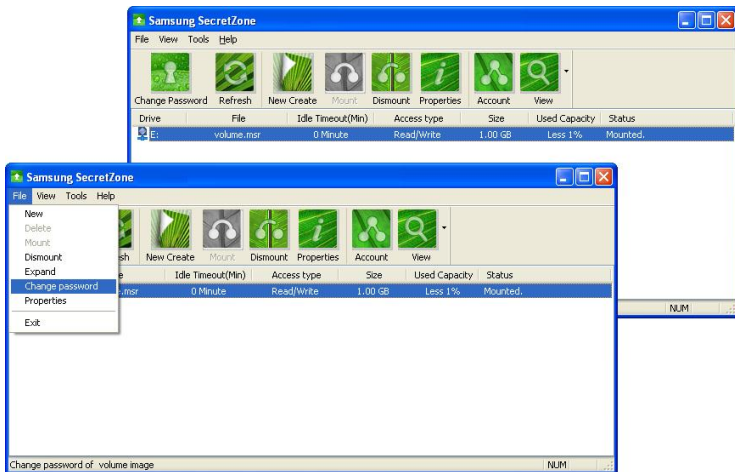
Gives you information on the revision of your software.

Setting Up the SecretZone

Icon Description

Just below the menu items there are icons which perform the most often used tasks. The descriptions are the same as the File Menu descriptions. The only difference is that these icons will save time. Instead of clicking **File -> Change Password**, click the **Change Password** icon

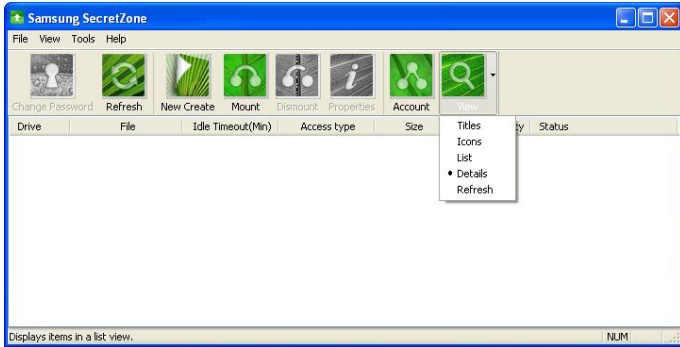
Figure 4-5 Icons are File Menu shortcuts



Setting Up the SecretZone

The only icon that has a sub-menu is the View icon, which has Tiles, Icons, List, Details, and Refresh.

Figure 4-6 View Icon has sub-menu's



Chapter 5 *Create a New
Volume Image*

Create a New Volume Image

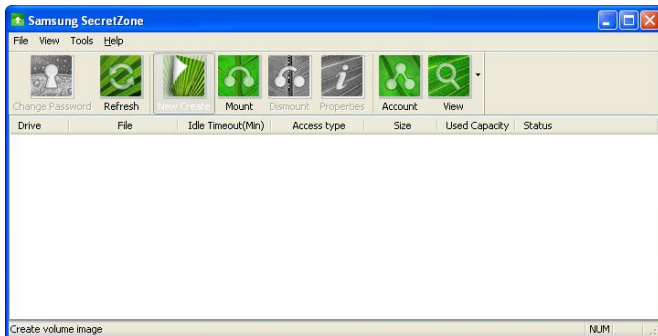
Create New

The first thing to do is create a new Volume Image. This Volume Image is also referred to as a Drive.

From the Samsung SecretZone Main Screen:

1. Click **New Create**

Figure 5-1 Click the New Create button



Create a New Volume Image

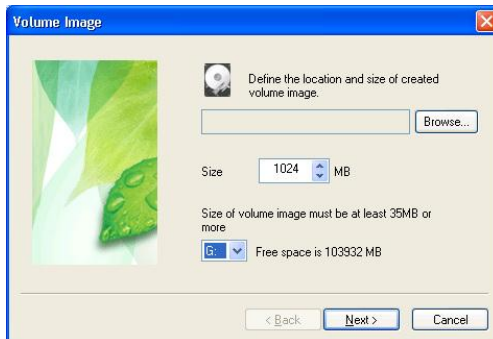
This screen is to designate the size and location of the volume. The default size is 1024 megabyte however, a volume can be created up to the size of the Free Space displayed to the right of the letter designation. In the following screen, the letter designation is F.

NOTE: THE FAT32 FILE SYSTEM LIMITS THE SIZE OF ANY FILE ON THE DRIVE TO A MAXIMUM OF 4GB. TO ENSURE RELIABLE OPERATION UNDER FAT32, SECRETZONE LIMITS EACH VIRTUAL DRIVE'S SIZE TO A MAXIMUM OF 2GB. WINDOWS PC OWNERS WHO WISH TO UTILIZE CAPACITY GREATER THAN 2GB SHOULD REFORMAT THEIR EXTERNAL SAMSUNG DRIVE TO NTFS IN THE WINDOWS OPERATING SYSTEM

If the size of the volume is correct:

2. Click **Browse**

Figure 5-2 Create Your New Volume Image Name

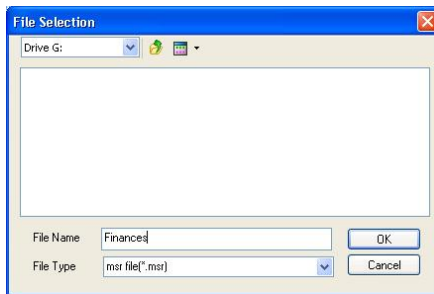


Create a New Volume Image

The **File Selection** screen is to assign a Volume name and file type. For the purposes of this manual, the File Type will be the default MSR FILE.

3. Click in the File Name box
4. Type **Finances**
5. Click OK

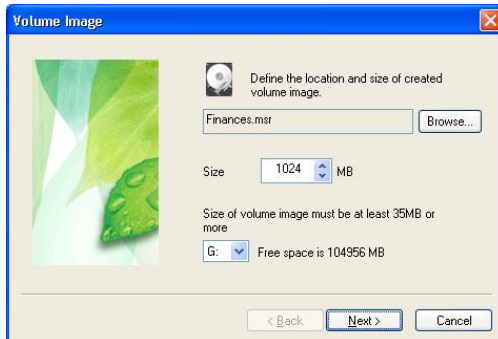
Figure 5-3 Volume Name and Type



If the volume name and size are correct:

6. Click **Next>>**

Figure 5-4 Name and Size complete



Designating a Letter to your Drive

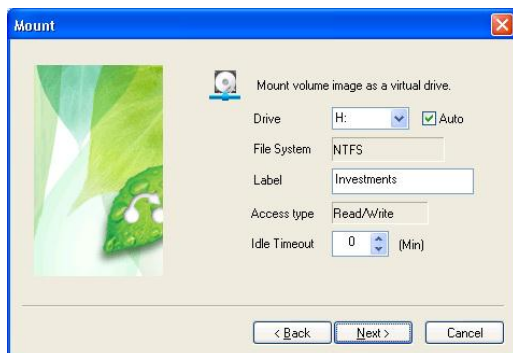
A drive letter not used by any other drive is assigned to the new Volume.

Your local drive called the "C" drive; the "0043" being the alpha letter designation. The drive for this volume is the Virtual Drive and it must have an alpha drive designation as well. In Figure 5-5 the alpha designation is G.

Your Virtual drive now must have a label name and have the Idle Timeout given. In the **Mount** screen:

7. Click in the Label box and enter a name
8. Click in Idle Timeout and choose **0 (zero)**
The File System is NTFS and Access Type is Read/Write.
9. Click **Next>**

Figure 5-5 Choosing the File System



NOTE: WITH "AUTO CONNECT" CHECKED, A SECURE DRIVE MIGHT NOT CONNECT RIGHT AWAY AFTER REBOOTING. NORMAL

Create a New Volume Image

**OPERATION WILL RESUME IN A FEW
MINUTES AFTER A REBOOT**

Create a New Volume Image

In the **Create the account for the volume image** screen create the password and algorithm for your new drive.

10. Click in the Password box and enter the password for your new virtual drive.
11. Click in the Confirm box and retype your password.
12. Click in the Algorithm box and choose the algorithm from the pull-down list. For the purposes of this manual, choose AES-128.
13. Click **Next >**

- Idle timeout means that disconnect virtual drive without any access during setting time.
- Auto connection means when the system boot volume image connect as a virtual drive automatically.

Figure 5-6 Creating the Password and Algorithm

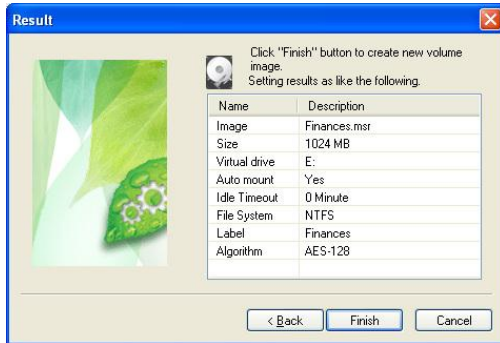


Create a New Volume Image

The Result screen gives a summary of the new Virtual Drive.

14. If you are satisfied with the information displayed, click **Finish**

Figure 5-7 Results screen gives a summary



The Creating the volume image progress bar displays where how much of the task has completed. (1GB = 1 min, 10 GB = 12 min)

Figure 5-8 Progress Bar



Create a New Volume Image

Upon a successfully created image, a prompt appears.

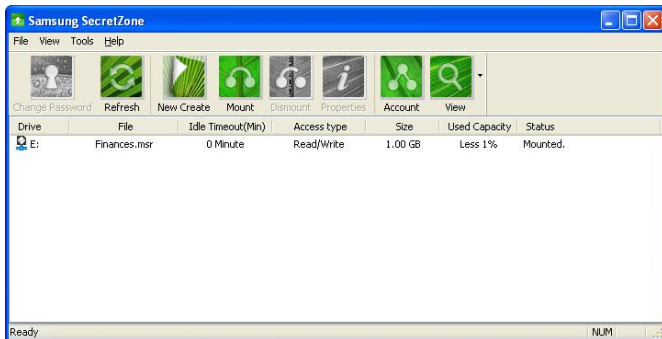
15. Click OK

Figure 5-9 Successfully created Image prompt



The Main Screen displays the newly create volume displaying the drives' alpha designation.

Figure 5-10 Windows Explorer



From this point, we can exit out of the software and see where the new Virtual Drive is in Windows Explorer.

Create a New Volume Image

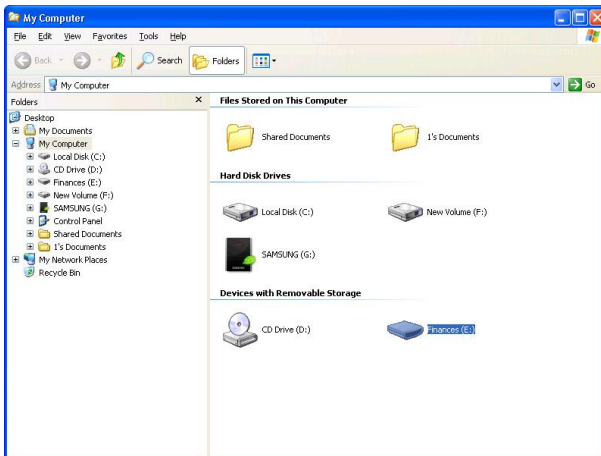
Checking the new volume from Windows Explorer

From your Windows Desktop:

15. Click **Start -> Programs -> Accessories -> Windows Explorer**

From the **Windows Explorer**, you can now see the new Virtual Drive.

Figure 5-11 Your Virtual Drive in Windows



Chapter 6 ***Working With
Virtual Drive***

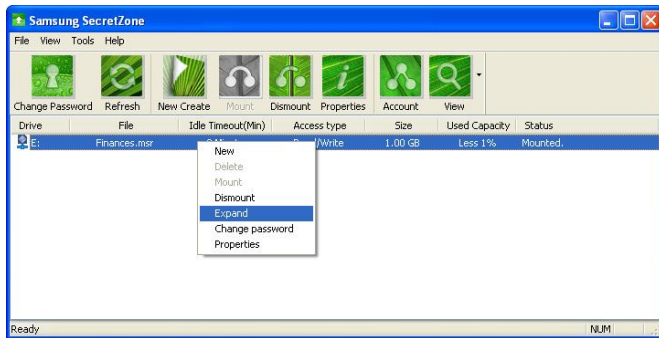
Expand

When the volume is 'expanded', there is more space on the drive. From the Windows desktop: Start your Samsung SecretZone software (See Chapter 4 section Starting the Software)

From the Samsung SecretZone main screen:

1. Right-click on the volume:
2. Choose Expand

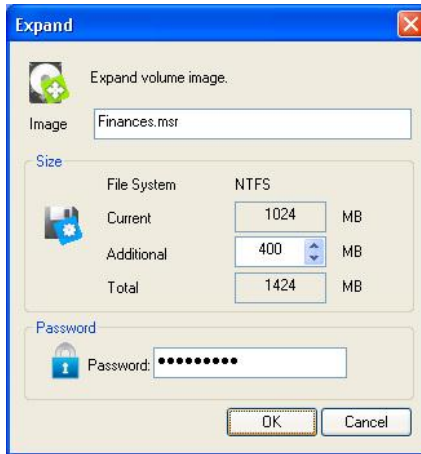
Figure 6-1 Expanding the Volume Image



Working With Virtual Drive

- Enter the expansion amount:
3. Click in the Additional box and enter the additional size
 4. Enter your volume image Password in the Password box '
 5. Click **OK**

Figure 6-2 Change the volume size



After the progress bar is finished, your drive will be expanded.

Figure 6-3 Progress of expansion



Working With Virtual Drive

If the image expanded successfully, the "Image is expanded successfully" prompt appears.

6. Click **OK**

Figure 6-4 A successful expansion prompt

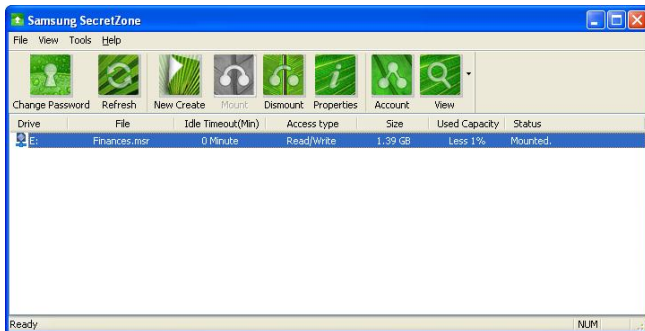


Changing the Name

To keep sensitive files separated, there is the option to create two Virtual Drives. One might be for Home Finances and one might be for investments. The first drive created was called Finances.

1. Click on the Virtual Drive
2. Click **Properties**

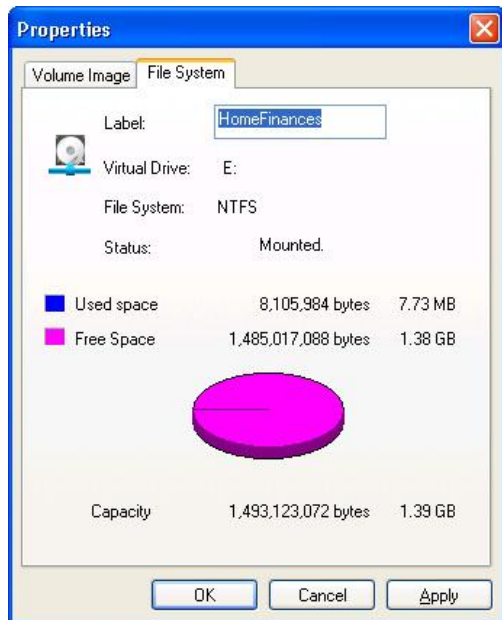
Figure 6-5 Click Properties



3. Click the File System tab
4. Enter HomeFinances Label box
5. Click **OK**

Working With Virtual Drive

Figure 6-6 Changing the name of a Volume

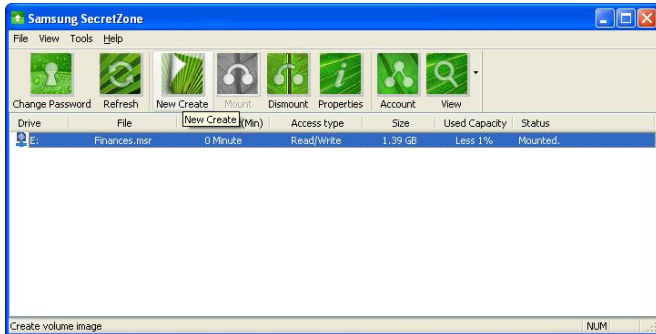


Create a New Volume

Now that HomeFinance has been created, the next step is create the volume for Investments. From the Samsung SecretZone Main menu:

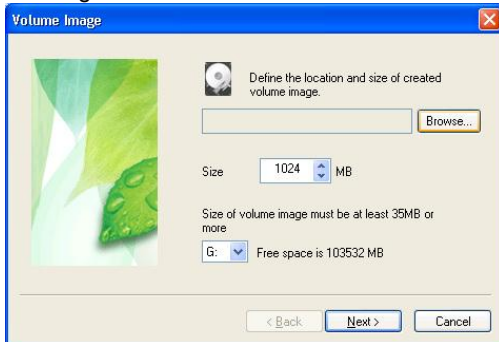
1. Click **New Create**

Figure 6-7 Create the Investments image



2. Click **Browse**

Figure 6-8 Click Browse

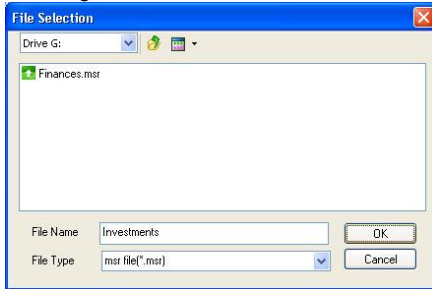


3. Enter *Investments* in the File Name box

4. Click **OK**

Working With Virtual Drive

Figure 6-9 Enter in the name of the new volume image



5. Click **Next>**

Figure 6-10 Enter 'Investments' in the Label box

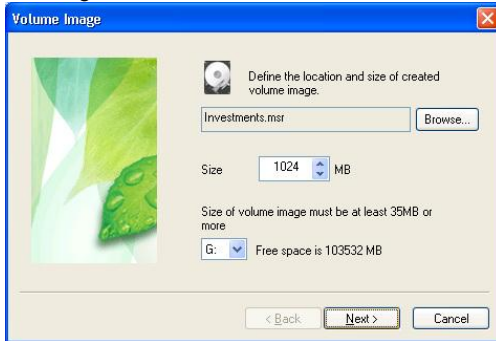
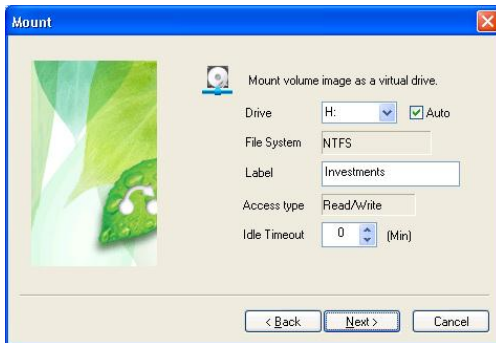


Figure 6-11 Click Next to complete mounting the volume image



6. Enter the administrators password for this volume

Working With Virtual Drive

- image.
7. Click **Next >**

Figure 6-12 New Password for New Volume Image

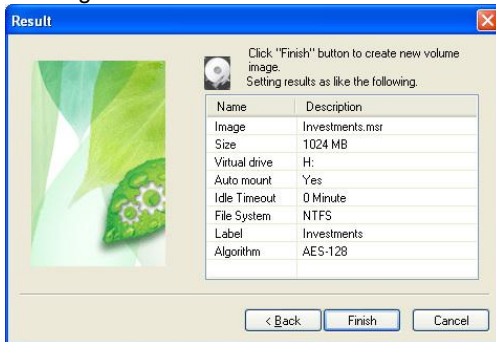


The final screen will give you the specifics of your newly created volume image.

You are returned to the Volume Image screen.

8. Click **Finish**

Figure 6-13 Returned back to the



Working With Virtual Drive

The prompt *"Image is created successfully"* appears. (1GB = 1 min, 10 GB = 12 min)

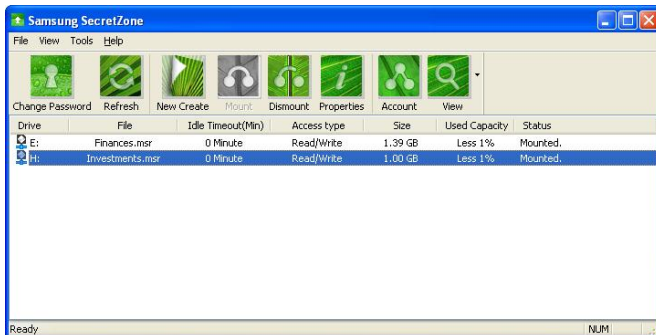
9. Click OK

Figure 6-14 Successfully created image



The Main Screen appears showing both new volume images.

Figure 6-15 Both volume images



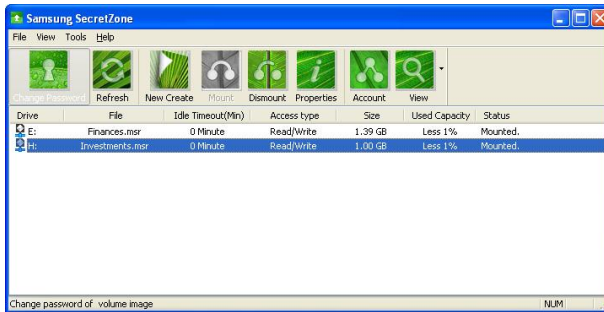
Change a Volume Password

At some point, you may want to change the password on one, or more, volumes.

From the Samsung SecretZone main screen:

1. Click on the **Investments** volume or drive
2. Click **Change Password** icon

Figure 6-16 Click **Change Password**



3. In the **Current** field, enter the current password
4. In the **New** field, enter the new password
5. In the **Confirm** field, re-enter the new password
6. Click **OK**

Figure 6-17 Changing the Password of volume image



Adding Users

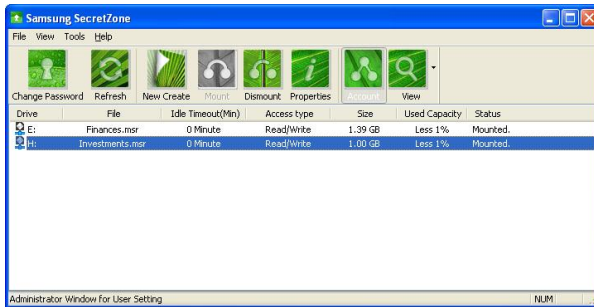
Others may also use your *Samsung External Hard Disk Drive* while keeping your information confidential.

We will create an account for John.

From the Samsung SecretZone main menu:

1. Click the **Account** icon

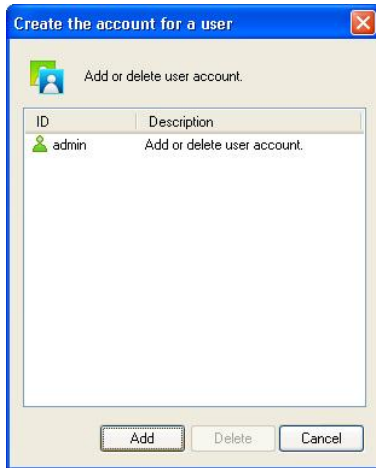
Figure 6-18 Creating a new User



2. Click **Add**

Working With Virtual Drive

Figure 6-19 Click Add to start adding a new account



Working With Virtual Drive

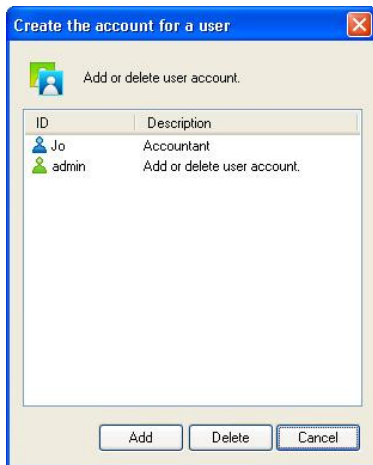
3. In the ID field, enter the name
4. In the Password, enter the password
5. In the Confirm field, reenter the password
6. In the Description field, enter the new users' role i.e. Accountant, Investment Manager, etc.
7. Click **OK**

Figure 6-20 New user and password addition



The screenshot shows a dialog box titled "Add User's Account" with a close button (X) in the top right corner. The dialog contains a sub-header "Add new user account" with a user icon. Below this are four input fields: "ID" with the text "Jo", "Password" with seven dots, "Confirm" with seven dots, and "Description" with the text "Accountant". At the bottom are two buttons: "OK" and "Cancel".

8. Click **Close** to return to the main menu



The screenshot shows a dialog box titled "Create the account for a user" with a close button (X) in the top right corner. The dialog contains a sub-header "Add or delete user account." with a user icon. Below this is a table with two columns: "ID" and "Description". The table contains two rows: one for "Jo" with description "Accountant" and one for "admin" with description "Add or delete user account.". At the bottom are three buttons: "Add", "Delete", and "Cancel".

ID	Description
Jo	Accountant
admin	Add or delete user account.

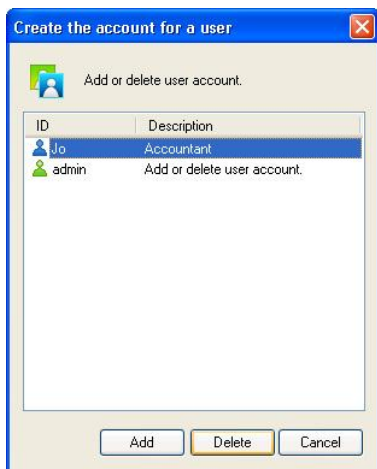
Deleting Users

Just as quickly as a user was created, a user can be deleted.

Instead of clicking Add, click to highlight the name and choose DELETE.

1. From the main menu:
2. Click **Account**
3. Click to highlight the account to delete
4. Click **Delete**

Figure 6-21 Deleting a User



5. Click **Yes**

Figure 6-22 Confirm User Deletion



Dismounting a Virtual Drive

Before disconnecting your *Samsung External Hard Disk Drive* from the computer, you should always dismount the volumes.

From the Samsung SecretZone main menu:

1. Right click the **volume** to dismount
2. Choose **Dismount**

Figure 6-23 Dismounting a Volume



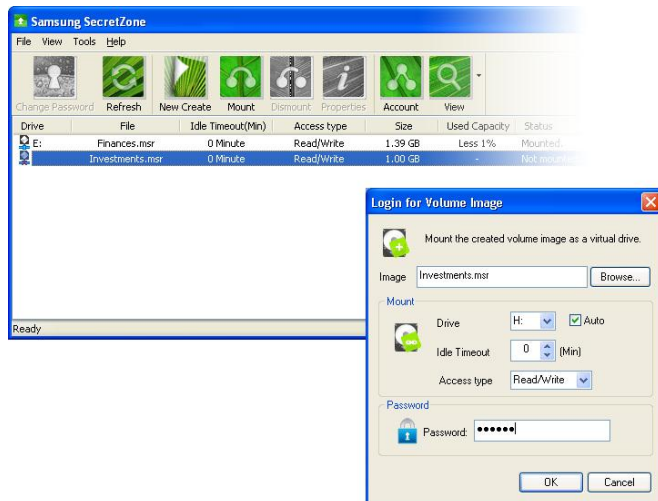
NOTE: ATTEMPTING TO "DISCONNECT" IMMEDIATELY AFTER COPYING/SAVING A LARGE FILE OR MULTIPLE FILES TO A SECURE DRIVE CAN LEAD TO AN ERROR. WAIT 30 TO 60 SECONDS BEFORE DISCONNECTING A SECURE DRIVE

Mounting a Volume Image to a Virtual Drive

When the *Samsung External Hard Disk Drive* is restarted, the drive(s) must be remounted. From the Samsung SecretZone main menu:

1. Click to highlight the drive to mount
2. Click the **Mount** icon
3. Enter the **password**
4. Click **OK**

Figure 6-24 Mount a drive

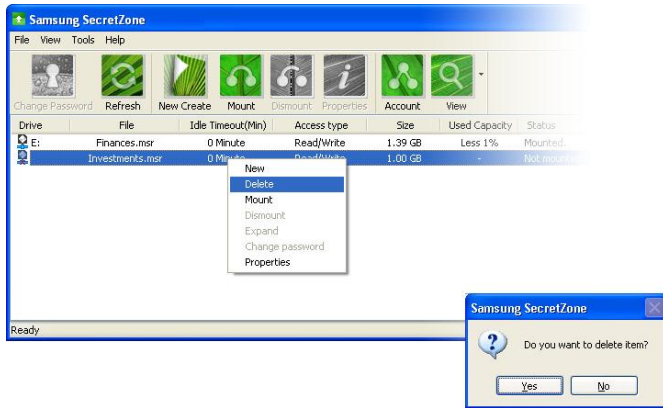


Deleting a Volume Image

If a volume is no longer needed, the volume can be deleted.

1. Dismount the volume (see Chapter 6 section Dismounting a Virtual Drive)
2. Right-click on the volume to delete
3. Click **Delete**

Figure 6-25 Deleting a Volume



This will delete the volume image only from the entry list, without deleting it actually. If you want to delete a volume image from the entry list, it must be disconnected first from the virtual drive.

Chapter 7 *Creating an
Executable Image*

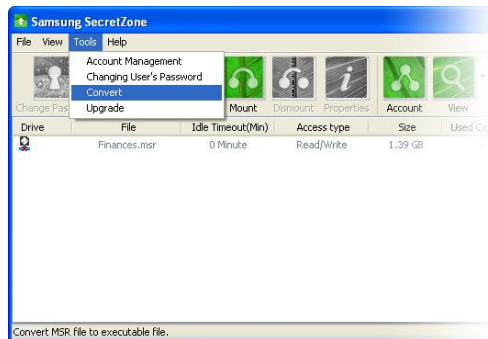
Converting a Volume

You can convert your secured data into an executable file that you can take from one Samsung External drive to another *Samsung External Hard Disk Drive*.

NOTE: WHEN YOU CONVERT A VOLUME IMAGE (.MSR) INTO AN AUTO-EXECUTABLE FILE (.EXE) IN THE FAT32, THERE IS A 2 GB LIMIT THAT WILL INCLUDE AN EXECUTABLE FILE AND AN IMAGE FILE (.MED)

1. Click on the **volume** that you will take with you
2. Dismount the Virtual Drive (See Chapter 6 Dismounting a Virtual Drive)
3. Click **Tools**
4. Click **Convert**

Figure 7-1 Converting an Image



NOTE: THIS OPTION IS ONLY AVAILABLE FOR SAMSUNG EXTERNAL HARD DISK DRIVES.

Creating an Executable Image

From the Conversion screen:

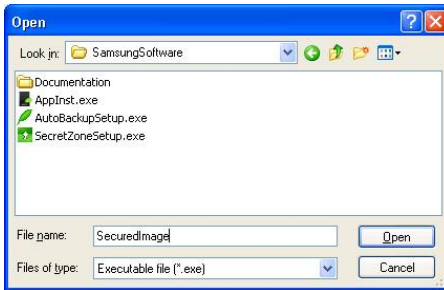
5. Click the Option pull-down window and choose ***Executable and image file***
6. Click the **BROWSE**

Figure 7-2 Start the selections for your conversion



Creating an Executable Image

7. Choose the Samsung External Drive to save the secured image onto
8. Enter the name for your secured image. For the purposes of this manual, we named the file **SecuredImage**.
9. Click **Open**



Creating an Executable Image

10. Click **OK**

Figure 7-3 Name and Save your converted file



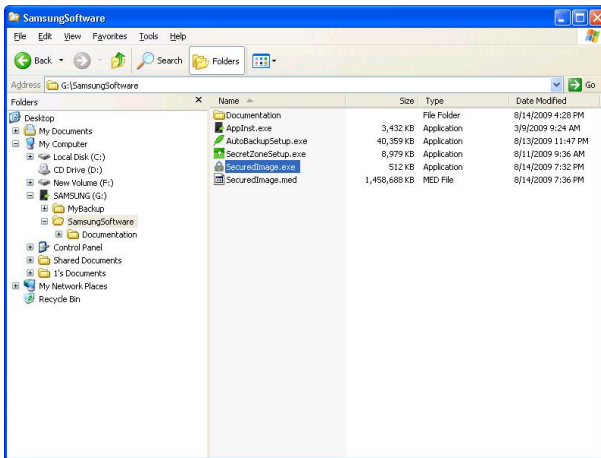
When the Progress Bar has completed, your executable file is completed.

Creating an Executable Image

Launching the Image File

When you want to open the secured file on another *Samsung External Hard Disk Drive*, you can launch your image file right from Windows Explorer.

Figure 7-4 Double click on your saved executable image from Windows Explorer



Enter your Admin password to open the file.

Index

B

Browser, 17

C

Cable
 USB cable, 18
Convert, 62
 Volume, 61
CPU, 17

D

defragmenting, 17

E

Executable, 61

F

FAT32, 11
File
 Image, 65
File Allocation Table, 10
File Systems
 FAT, 9
 NTFS, 9
 RAW, 9

H

Hard Disk Drive, 17
HDD, 17

I

Idle, 9

 Timeout, 9
Image
 Secured, 63

M

Memory, 17

O

Operating System, 17
 optimizing, 17
OS, 17

P

 partition, 12, 13
Partition, 9, 10, 11, 12, 13
 FAT16, 10
 FAT32, 11
Password, 22
 Admin, 65
 Create, 22
Processor, 17

S

Secured Image, 63
System Specifications, 17

T

Timeout
 Idle, 9

U

USB, 18
 cable, 18

V

Virtual Drive, 13

Virus Scanning, 7

Volume

 Convert, 61, 62

W

Web Browser, 17

Windows NT File System, 12