



LYVE CLOUD AND NETBACKUP

About This Guide

This paper details the steps and best practices to deploy Seagate's Lyve Cloud, as a new cloud tier, to an existing Veritas NetBackup Media Server Deduplication Pool (MSDP) storage server.

Audience

This paper is written for storage and backup administrators familiar with administering and managing backup environments.



CONTENTS

- 3 CHALLENGE SUMMARY
- 3 SOLUTION SUMMARY
- 4 BENEFITS OF USING SEAGATE LYVE CLOUD WITH VERITAS NETBACKUP
- 5 DEPLOYING SEAGATE LYVE CLOUD WITH VERITAS NETBACKUP
- 6 TASK 1: CREATE A LYVE CLOUD SERVICE ACCOUNT
- 7 TASK 2: ADD A CLOUD TIER TO NETBACKUP
- 7 SUMMARY



Challenge Summary

There is no shortage of need when it comes to data storage. Enterprise IT has demanded a well-defined strategy to store and protect all data. Trusted data storage is integral to business success as enterprises continue to generate massive amounts of data. Business agility and continuity require a secure, cost-optimized, efficient, and scalable cloud backup solution that provides on-demand access.

Enterprise IT admins need a principal partner when it comes to enterprise-grade storage and data fortification. Seagate Lyve Cloud with Veritas combines Seagate's best-in-class data storage performance with market-leading Veritas data protection and management. The combined solution delivers predictable cloud storage economics, protection against ransomware attacks and an easy-to-use gateway for efficient ingestion and backup retrieval from Lyve Cloud.

Solution Summary

The Lyve Cloud with Veritas solution addresses the IT need for data to be secure, portable, and cost-optimized. A cost-efficient cloud storage and data management solution, Lyve Cloud with Veritas supports frictionless movement of protected backup data, long-term retention, and on-demand access.

Organizations across industries are launching new technology initiatives that require them to store, access, and analyze large, fast-growing volumes of data. Much of that data is unstructured, whether organizations are implementing AI/ML, IoT, or other big data solutions. As such, these users need an effective way to store and analyze terabytes, petabytes, or several petabytes of data.

Benefits of using Lyve Cloud with NetBackup

Enterprise IT leaders searching for a cloud storage and protection solution can now choose confidently. With Veritas and Lyve Cloud, storage admins get access to:

Simplified backup management—Lyve Cloud with Veritas NetBackup provides a flexible, scalable, and simply priced cloud backup solution. The solution leverages feature-rich data management technologies to facilitate frictionless backup movement to a secure, S3-compatible cloud storage platform.

Comprehensive data protection—Get a comprehensive approach to data security and integrity across the entire data path. Lyve Cloud with Veritas leverages resilient, enterprise-class storage technologies, world-class durability, and multi-level ransomware resiliency to deliver protection for data in transit and at rest.

Easy deduplicated data tiering—In a matter of minutes, admins can add a Lyve Cloud tier to a build-your-own (BYO) or Veritas NetBackup™ MSDP appliance.

Predictable management cost—Easy-to-understand pricing allows organizations to store more data and manage backups without surprise charges or lock-in concerns. Lyve Cloud with Veritas supports business agility with a scalable data management platform that reduces TCO for cloud storage.

Deploying Seagate Lyve Cloud with Veritas NetBackup

Deployment Prerequisites

1. Lyve Cloud Storage Account, this includes:
 - Obtain Access and Secret Keys for the storage account
 - Have the ability to read/write/list and create buckets and objects and the ability to delete objects
2. RHEL/CentOS 7.3+ Media server/ OR NetBackup Appliance
3. NBU 8.3 (NBU Appliance 3.3.0.1) or higher with MSDP set up, consult the [video link](#)
4. Confirm the MSDP server has 1TB unused space on the storage pool
5. Newest NetBackup CloudProvider.xml from [here](#).

Configuration Overview

The configuration for Lyve Cloud with NetBackup is divided into 2 simple tasks.

- Task 1: Create a Lyve Cloud Service Account, consult the reference guide: [Lyve Cloud Quick Start Guide](#)
- Task 2: Add a cloud tier to NetBackup

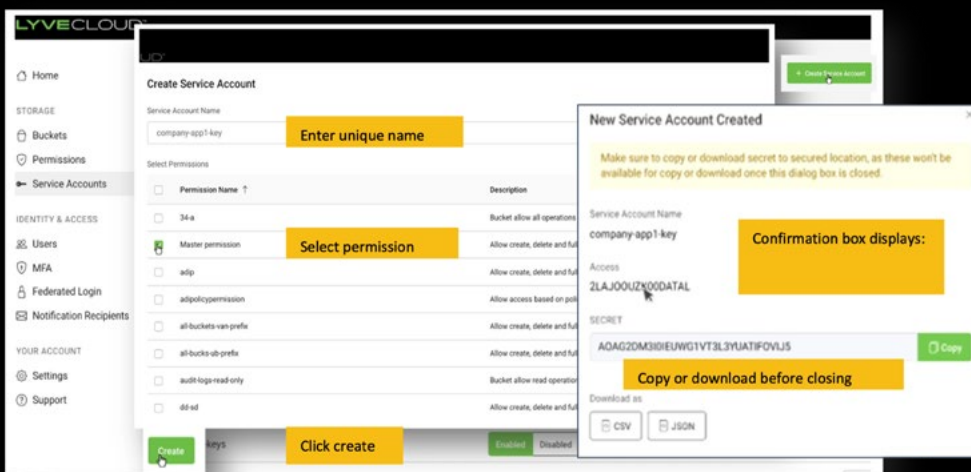
Task 1: Create Lyve Cloud Service Account

It is assumed that a Lyve Cloud Storage Account has been created and configured. This consists of the following steps:

- Set up S3 Bucket
- Create Bucket Permissions
- Create a Service Account – establishing access key, secret key, and associated URL for your account; see example below

Create Service Account

Go to “Service Accounts” section of the Lyve Cloud Console and select the “Create Service Account” button



Note: You must have at least one bucket with at least one associated permission before you can establish the credentials needed to add Lyve Cloud, as a Storage Tier in NetBackup.



Task 2: Add a Cloud Tier on Veritas NetBackup

Step 1: Add Disk Pool

Go to the “Storage” section of the webUI, then under disk pools, select “Add” in the upper right-hand corner.

The screenshot shows the 'Add disk pool' configuration page in the Veritas NetBackup webUI. The left sidebar contains navigation options: Dashboard, Activity monitor, Protection, Protection plans, Policies, Workloads, Oracle, Microsoft SQL Server, VMware, R4V, Cloud, Storage (selected), Credential management, Resiliency, Security, Usage, and Veritas SaaS Backup. The main content area is titled 'Add disk pool' and has two tabs: 'Disk pool options' (active) and 'Replication'. The 'Disk pool options' tab contains the following fields and options:

- Storage server name: rsvmc01vr07
- Features: Accelerator, AIR, Instant access
- Disk pool name: seagate_lyve (with a yellow callout box 'Enter pool name')
- Description: (with a yellow callout box 'Enter description')
- Limit I/O streams: (with a note: 'Connection read and write jobs affect disk performance. Limit I/O streams to prevent disk overload')
- High water mark: 98
- Low water mark: 80

A 'Click Next' button is located at the bottom right of the form.

Step 2: Add Volume

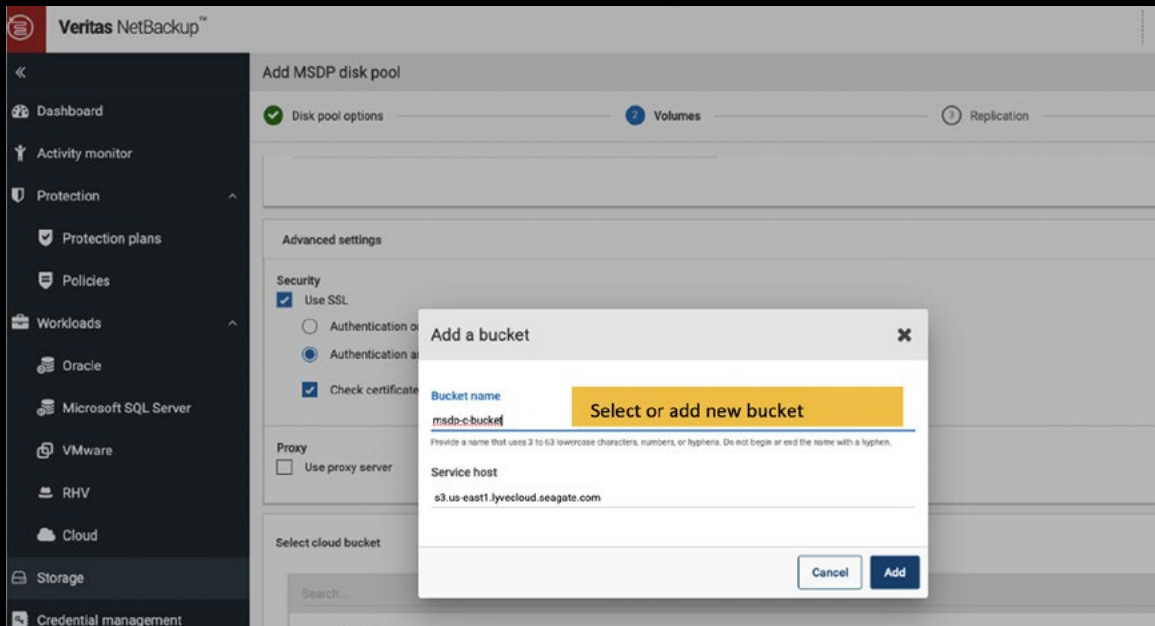
The screenshot shows the 'Add MSDP disk pool' configuration page in the Veritas NetBackup webUI. The left sidebar is the same as in Step 1. The main content area is titled 'Add MSDP disk pool' and has three tabs: 'Disk pool options' (active), 'Volumes', and 'Replication'. The 'Disk pool options' tab contains the following fields and options:

- Volume: Add volume (dropdown)
- Volume name: seagate-MSDP-C (with a yellow callout box 'Enter volume name')
- Cloud storage provider: Seagate Lyve Cloud
- Storage API type: Amazon S3 (with a yellow callout box 'Select Seagate Lyve Cloud as provider')
- Region: A table with columns 'Service host', 'Region name', and 'Region identifier'. The table contains one entry: 's3.us-east-1.lyvecloud.seagate.com', 'us-east-1', and 'us-east-1'.
- Access details for the account: Access key ID: LC12JAE3D0X0B... (with a yellow callout box 'Enter Access Key & Secret Key created in Lyve Storage Account')
- Secret access key: (with a yellow callout box 'Enter Access Key & Secret Key created in Lyve Storage Account')



Task 2: Add a Cloud Tier on Veritas NetBackup

Step 3: Select or Create Bucket



Keep in mind that bucket names need to be all lowercase with no spaces.

The wizard will walk you through the remaining step of creating a storage unit. Once the storage unit is created, it can be used as a target for backups and duplication jobs.



Summary

The Lyve Cloud with Veritas solution delivers a scalable cloud backup storage platform with predictable economics, allowing enterprises to meet the challenge of storing and protecting all their data.



Ready to Learn More?

For more information on Lyve Cloud,
visit: <http://www.seagate.com/lyvecloud>

For more information on Veritas,
visit: <http://www.veritas.com/>

seagate.com

© 2021 Seagate Technology LLC. All rights reserved. Seagate, Seagate Technology, and the Spiral logo are registered trademarks of Seagate Technology LLC in the United States and/or other countries. Lyve is either a trademark or registered trademark of Seagate Technology LLC or one of its affiliated companies in the United States and/or other countries. All other trademarks or registered trademarks are the property of their respective owners. Seagate reserves the right to change, without notice, product offerings or specifications.

