



Seagate Business Storage 8-bay Rackmount NAS Reviewer's Guide



Purpose of this guide

Experience the most common use cases for the product, learn about the innovative design elements and navigate the new Seagate NAS OS interface.

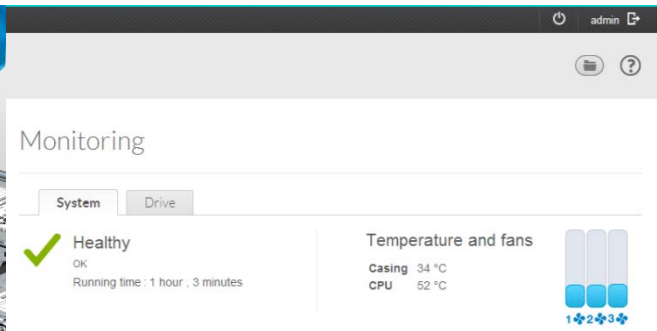
Design

The 8-bay Rackmount NAS is the first 1U rackmount NAS to feature eight 3.5" hot-swappable drives. Our custom designed chassis is also unique in that it optimizes drive cooling and features a cable-free design, making drive installation a snap.



We continued the theme of easy swap-ability with other parts on this enterprise-class NAS as well. The three 40mm fans on the device simply pop out with no tools and indicator LEDs highlight the particular fan in need of service. The fans are also managed by the Seagate NAS OS to deliver proper cooling without excess noise and if a fan should fail, the other two automatically increase their airflow to maintain proper system temperature. In addition, the unique

chassis features layered ventilation channels, allowing just three small fans to cool all eight drives, the powerful Intel processor and other system components.



The 8-bay rackmount NAS includes redundant power supplies to keep your business up running. If you ever need to change a power supply, it's as simple as depressing a tab and sliding it out – no tools required.

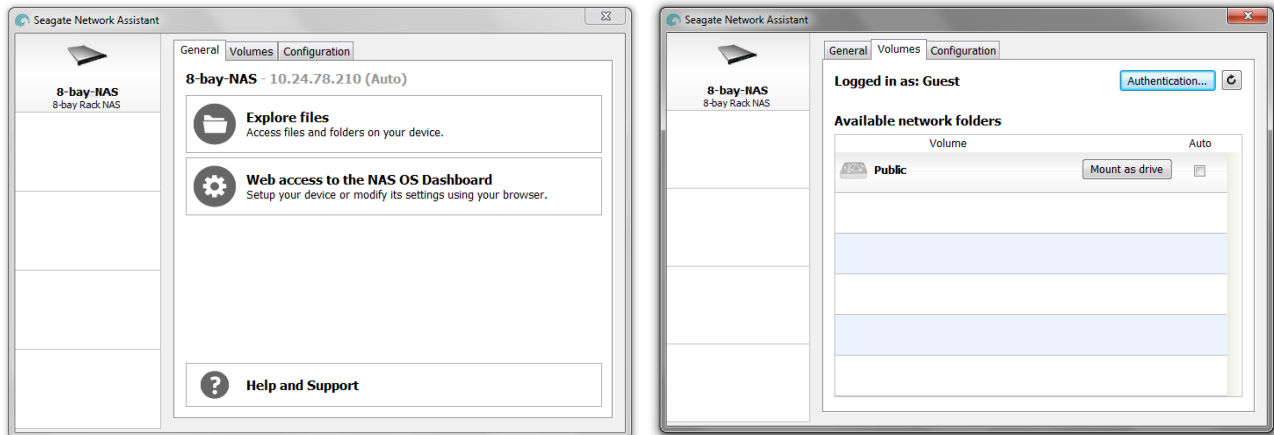


Included with the 8-bay Rackmount NAS is a sliding rail kit and cable management arm to keep everything organized and prevent cable snags when servicing the NAS.

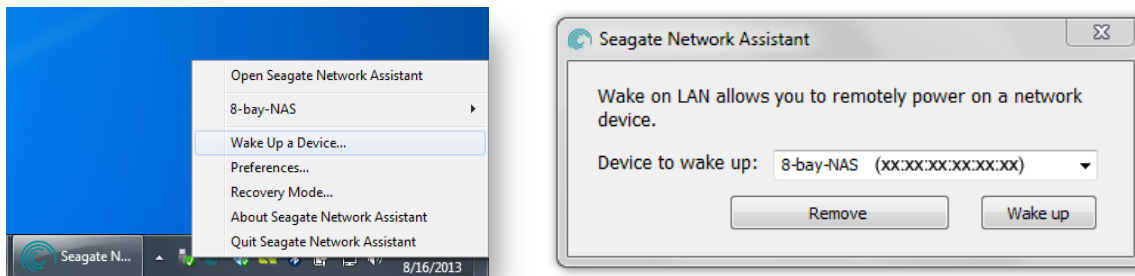


Seagate Network Assistant

On the provided flash key, we include software for discovering the NAS on your local network. The software also allows you to see the shares created on the NAS, launch the web-based management interface and WOL (wake on LAN) functionality.

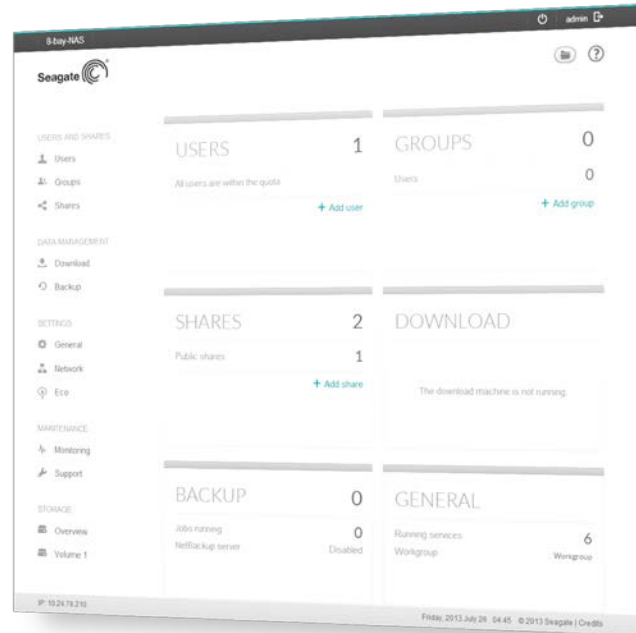
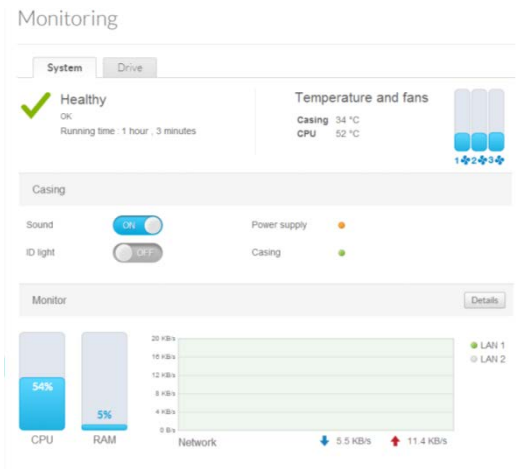


To wake a Seagate NAS that is turned off, but is still connected to a live Ethernet port on your router, right-click on the Seagate Network Assistant icon in your taskbar and select "Wake Up a Device". Type in the MAC address for the device you want to wake up. The MAC address can be found on the slide out plastic tab on the front of the NAS, by connecting a VGA monitor to the NAS and viewing the on-screen text or by going to the network settings in the web management interface. The software will remember the MAC address for the next time you want to wake the device. Simply use the drop-down menu and click the "Wake Up" button for future use.

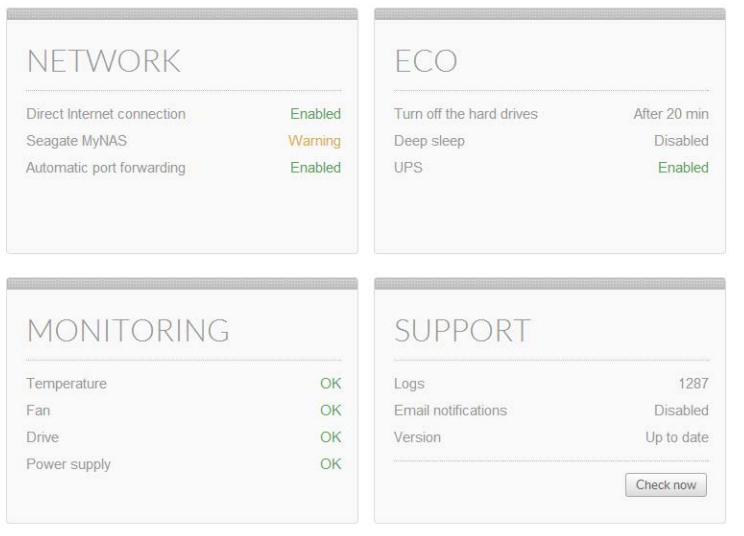


Seagate NAS OS and Web Management Interface

Seagate has developed a new Linux-based operating system for our NAS products called Seagate NAS OS. The OS has been tuned for performance and features a clean, intuitive UI that is lightning fast to navigate. The next few sections will highlight the capabilities of the NAS OS and popular settings for getting the most out of the 8-bay Rackmount NAS.



Web Management Interface: Dashboard



Once logged into the Seagate NAS OS, you will be presented with the dashboard screen. Here you will see a status overview of what's going on with the NAS. You can click on any of the large boxes to navigate directly to the particular setting or correct an issue if a warning is present. The boxes on the dashboard can be re-arranged by dragging the dark grey bar on top of a box and dropping to a new location on the screen.

Web Management Interface: Firmware Updates & Support

From the dashboard, click on “Support” under “maintenance” on the left nav. In the support section, you can view the current Firmware version number, check for new Firmware, enable email notifications and view system logs.

Product reviewers, please use this page to check for the latest Firmware before proceeding with your review.

Support

NAS OS updates

Firmware : 3.2.2.5

Hardware : n080801

Update automatically : ☒ [Edit](#)

Status : The software is up to date

Last check : 2013/08/19 - 15:36:29 (Succeeded) [Check now](#)

[Download System Log](#)

Date & Time	Category	Content
2013 Aug 19 15:12:50	System	The system is ready.
2013 Aug 19 15:12:36	UPS	PR1000LCORDMU is on AC.
2013 Aug 19 15:12:18	UPS	PR1000LCORDMU is disconnected.
2013 Aug 19 15:11:21	System	The system is starting.
2013 Aug 16 16:32:16	System	The system is shutting down.

Monday, 2013 August 19 15:36 © 2013 Seagate | Credits

Web Management Interface: Services

From the dashboard, click on “General” under “settings” on the left nav and then switch to the “Services” tab. Here you can enable key software features and protocols to make the 8-bay Rackmount NAS compatible with the devices on your network and to customize the NAS for your particular needs. Highlighting your mouse over an item gives you an option to enable/disable the service and edit its advanced settings.

General

[General](#) [Services](#)

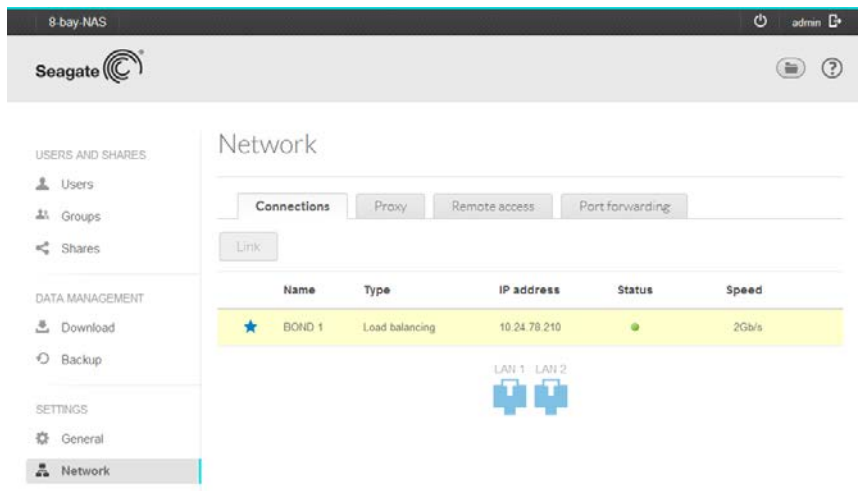
Configure the settings for file sharing services on your device: [Show summary](#)

Name	Description	Status
SMB	Server Message Block. File and print sharing are native to Windows. They are also compatible with Linux and Mac OS X.	●
AFP	Apple Filing Protocol. File and print sharing native to Mac OS X.	●
NFS	Network File System. File sharing native to UNIX and Linux.	○
FTP	File Transfer Protocol. Upload and download files locally and remotely.	●
SFTP	Secure File Transfer Protocol. Upload and download files locally or remotely using a secure connection.	○
Wuala Hybrid Cloud	Hybrid Cloud storage gives you access to your files anywhere in the world. Learn more.	●
Time Machine	Backup program integrated into Mac OS X only.	○
UPnP/DLNA	Stream multimedia files from your 8-bay Rack NAS to UPnP and DLNA compatible devices on the network.	●
iTunes™	Stream multimedia files from your 8-bay Rack NAS to compatible devices on the network using iTunes.	○
Printer server	Share a USB printer on the local network.	○
iSCSI	Block-level protocol for a single user, a SAN, or a cluster environment.	●
NetBackup	Seagate NAS and rsync-compatible devices can use your 8-bay Rack NAS to back up their data.	○

Friday, 2013 August 16 15:15 © 2013 Seagate | Credits

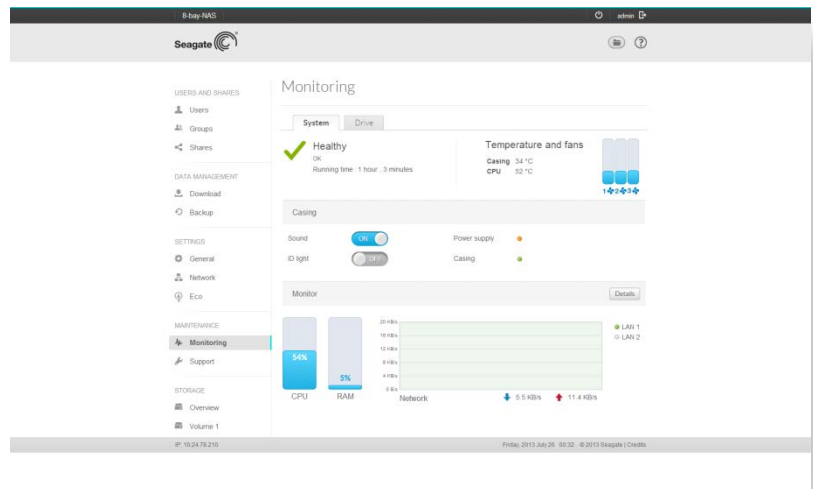
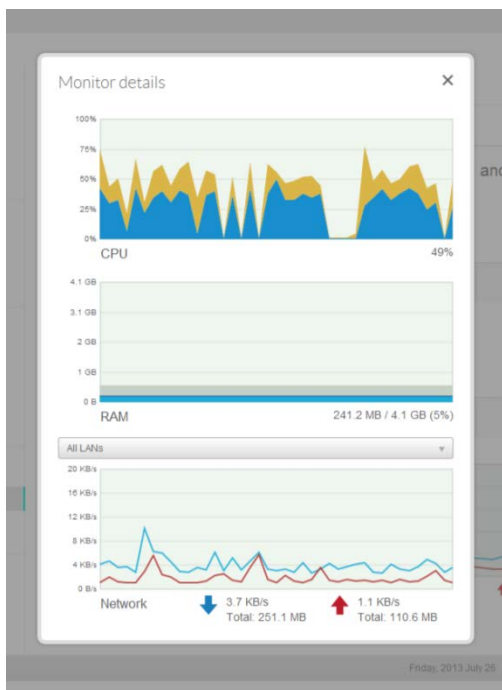
Web Management Interface: Network

The “network” tab allows you to configure how your NAS connects to your local network and the Internet. The 8-bay Rackmount NAS features dual Gigabit Ethernet ports and they can be combined together for redundancy or load balancing, which can increase file transfer performance. Simply click on the “Link” button to enable load balancing. Note: you will need a compatible network switch to utilize this function. Network switches often advertise this feature as “teaming”, “link aggregation” or “802.3ad”.

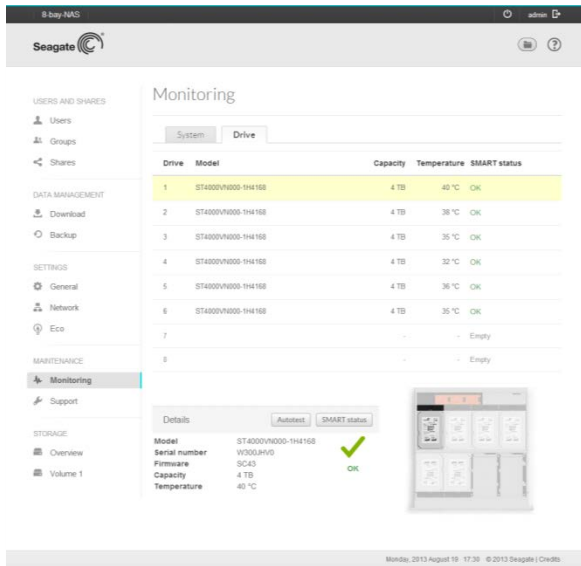


Web Management Interface: Monitoring

From the dashboard, click on “Monitoring” under “maintenance” on the left nav. Here you will find critical info about how the NAS is operating, such as: system temperature, fan speed, CPU load, memory usage, power supply status and a network traffic graph.



Click on “Details” to view timeline charts.

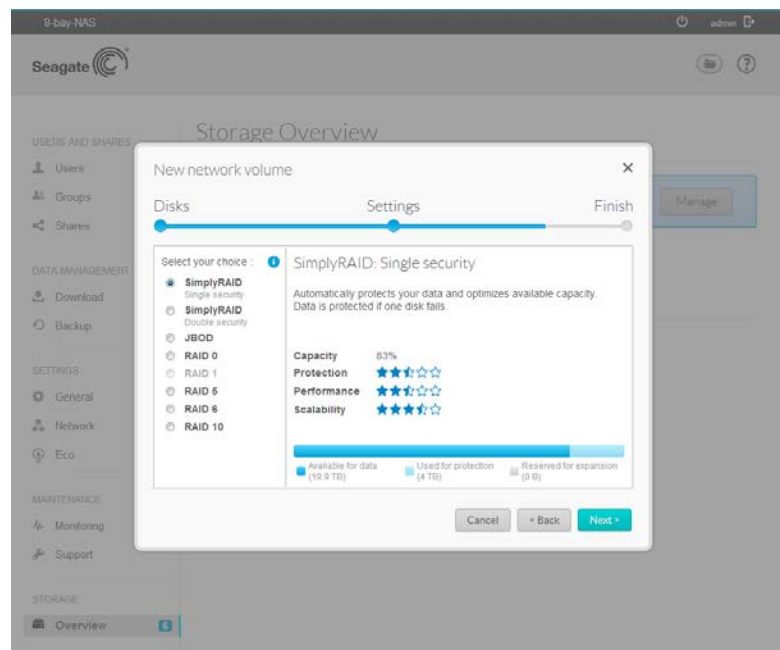


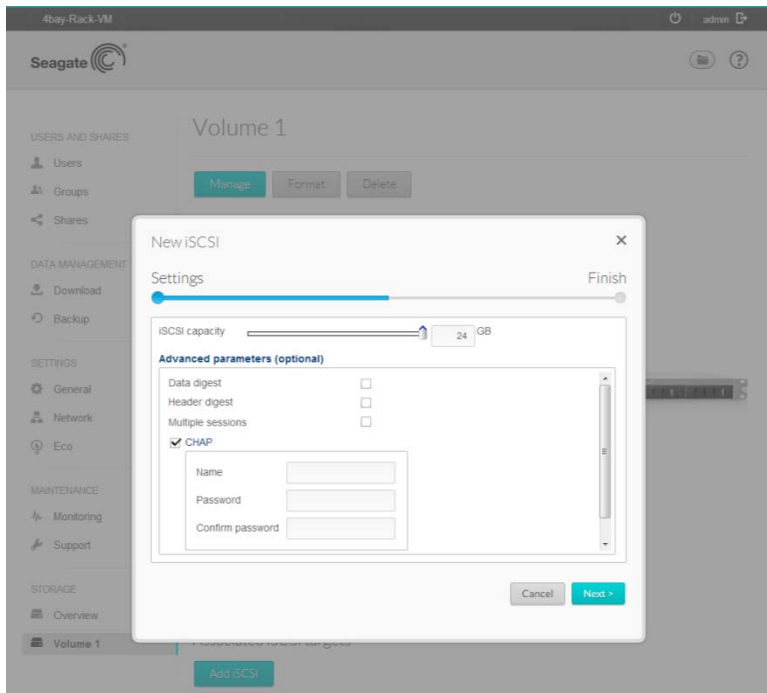
In the same menu under the “Drive” tab, you will see the status of each drive installed in the system. When you click on a drive number or other info in the list, an image below will highlight where the drive is installed in the system.

Web Management Interface: Storage Volumes

From the dashboard, click on “Volume 1” under “Storage” on the left nav. Here you will see how the drives are combined together to form a volume. By default, the drives should be configured with SimplyRAID technology and have 1 drive failure protection. You can click on the “Manage” button to change to a traditional RAID format or add 2 drive failure protection with SimplyRAID.

SimplyRAID is a software RAID system that makes it easy to configure your drives based on your goals such as maximum capacity or drive failure protection. SimplyRAID supports volumes with mixed capacity drives, upgrading to larger drives without having to move data from the volume and offers a performance benefit over other supported RAID options (with the exception of RAID 0). Another benefit of SimplyRAID is that you can begin storing and accessing data immediately after configuring a volume, compared to traditional RAID configuration which needs to go through a lengthy build process before the volume is usable. *Note: full file transfer performance will be available once the SimplyRAID volume has completed its “Synchronization” process.*

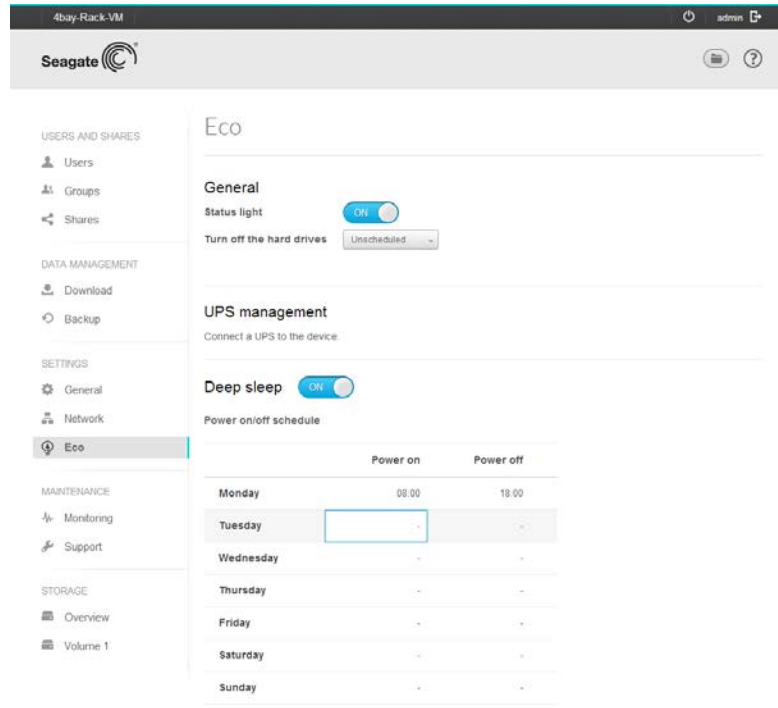




On the bottom of the page, you have the option to add an iSCSI target. There is an option for “Multiple sessions”, select this option *only* if your iSCSI target will be managed within a SAN cluster environment. The SAN cluster allows multiple iSCSI initiators to access the iSCSI target at once.

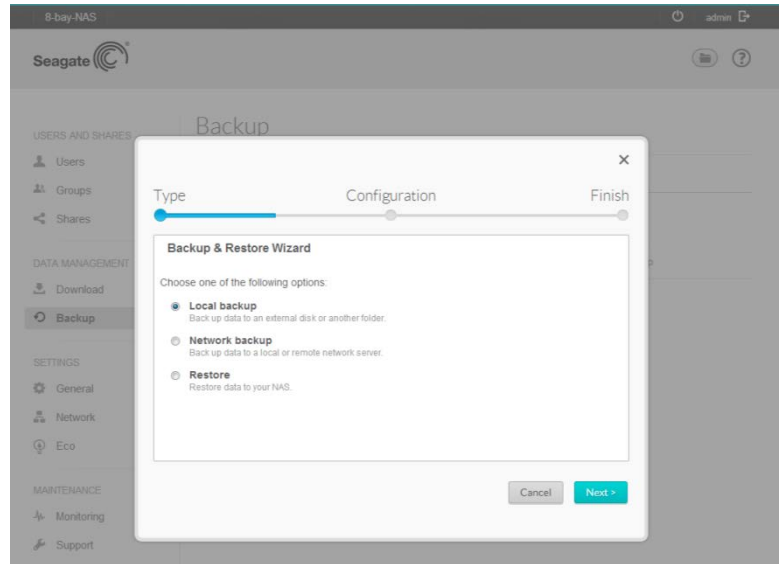
Web Management Interface: Eco – Deep Sleep

From the dashboard, click on “Eco” under “Settings” on the left nav. On the bottom of the page, you have the option to enable “Deep Sleep” for the device. When deep sleep is enabled, you can set a schedule for when the NAS turns on and off to save power during non-business hours. At any time, the NAS can be turned on manually with the power button or by using the remote wake feature mentioned above in the Seagate Network Assistant section. *Note: to use the remote wake function while outside of the LAN, you will need to configure port forwarding on your router or VPN into your office network.*



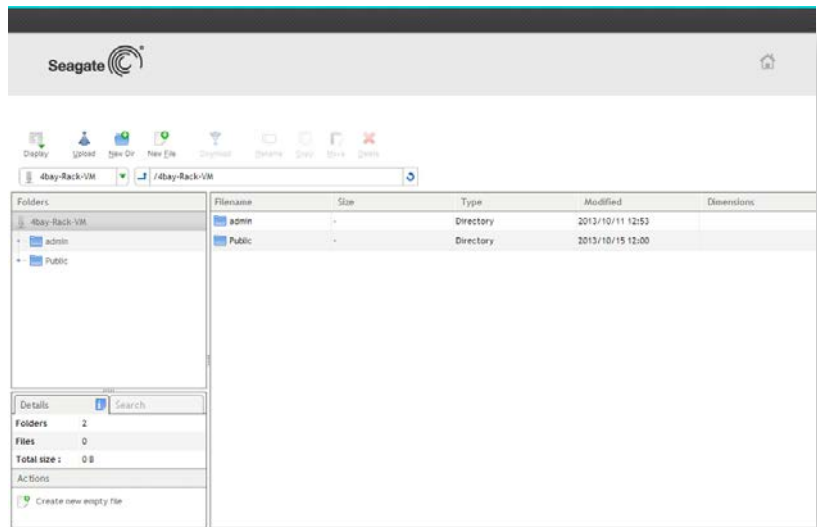
Web Management Interface: Backup

From the dashboard, click on “Backup” under “Data Management” on the left nav. The Backup menu is where you can configure backup jobs. Jobs are one time or scheduled backup tasks that copy data from one or more chosen shares to an external drive, other Seagate rackmount NAS product or compatible Rsync backup server. When backing up to an external drive, you also have the benefit of the drive being ejected once the backup is complete and for the backup task to begin the next time the drive is plugged into the system.



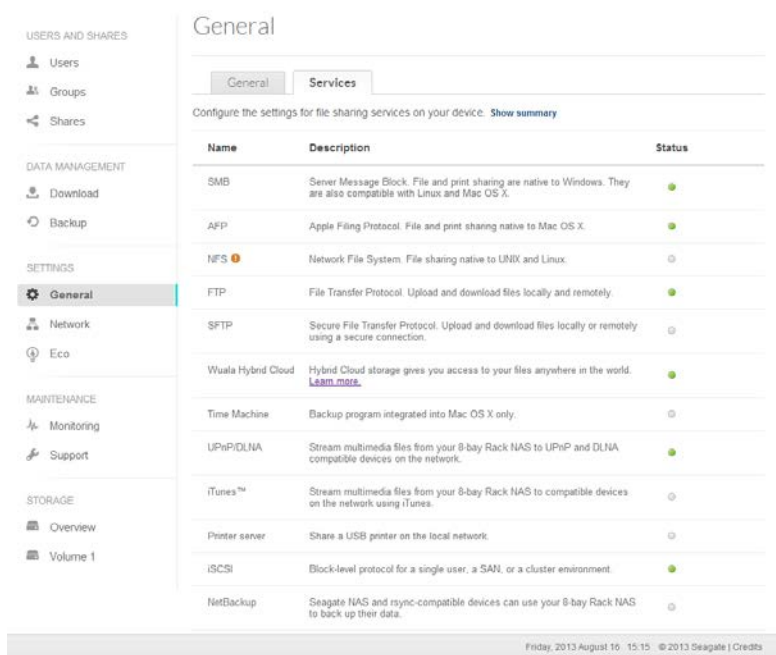
Web Management Interface: File Browser

On the top right of the screen, click on the folder icon. This will open up a web-based file browser, which can be used to access files in and out of the office directly from the NAS. The file browser gives you the option to upload and download files and view select file types in the web browser. Popular video and audio formats stream directly from the browser, photos can be viewed in a slideshow and select photos can be edited with the built-in Pixlr image editor.



Web Management Interface: Wuala

From the dashboard, click on “General” under “Settings” on the left nav and switch to the “Services” tab. Scroll down to “Wuala Hybrid Cloud”. If not enabled, click on the “Edit” button that appears when hovering over the status icon. Once enabled, click on the “learn more” link to download the Wuala desktop app for PC or Mac. After installing the Wuala application, create a new account or login with an existing account. Then navigate to “Devices” on the left side nav. If you are on the same local network (wired or wireless) as the Rackmount NAS, the device will be displayed in the window. Select a device and login with your Rackmount NAS credentials. This will link your Rackmount NAS account with your Wuala account, enabling remote access and syncing capabilities to the Rackmount NAS.

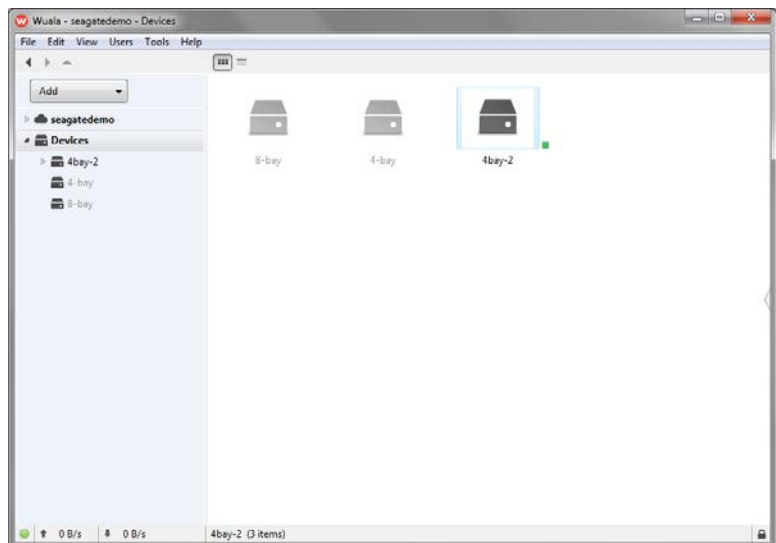


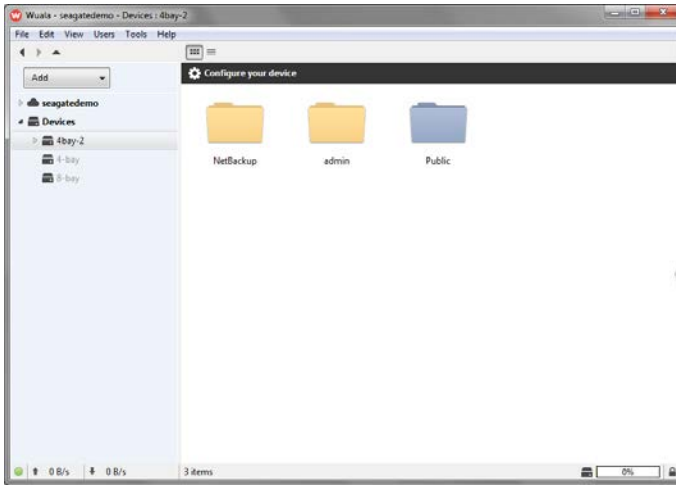
Wuala: Desktop App

After the Wuala service is enabled on your NAS device and the desktop app for PC or Mac is installed, you can use the desktop app to view, download, upload and sync files stored on your NAS or Wuala cloud storage and manage remote access privileges.

Begin by selecting “Device” from the drop down menu labeled “Add” on the left side of the app window. If you are on the same local network as your NAS device, Wuala should find your NAS on the network, allowing you to add it to your Wuala account by typing in your NAS device credentials.

Once your device is added, you can access its contents from anywhere, including outside of your local network.

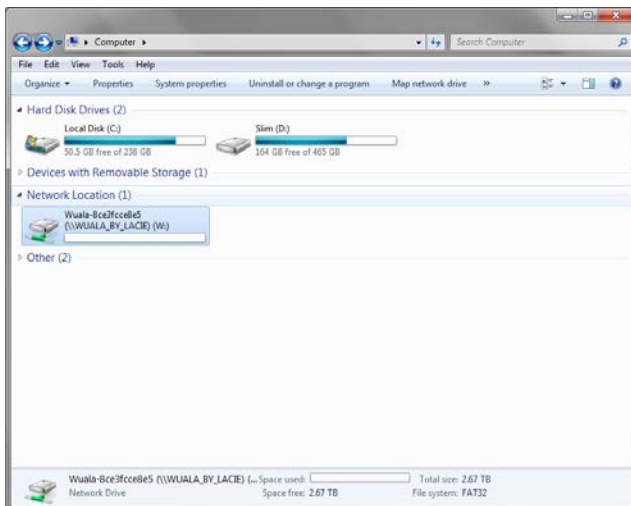
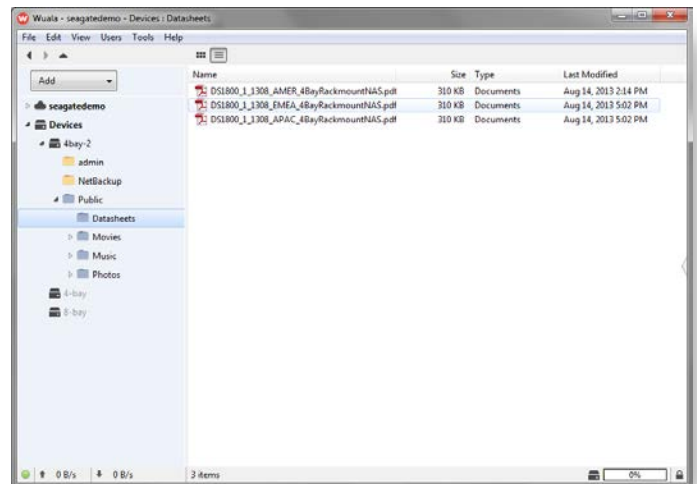




By double-clicking on the NAS device icon, you can view the shared folders you have access to.

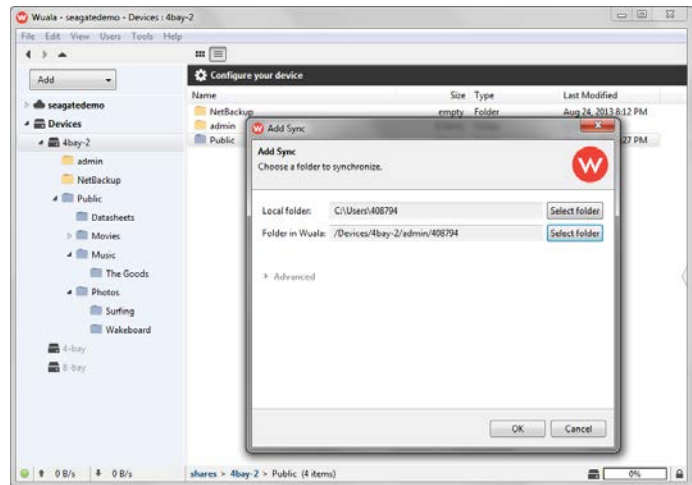
Note this access is controlled by the share settings from the NAS OS management interface.

You can click on a file to open it with the default app on your PC or Mac. For instance, if you open a PDF it will open in your computer's default program, such as Adobe Acrobat. If you chose to edit and save a file that you opened from Wuala, it saves the changes directly to the file stored on the NAS. To add a new file, simply drag and drop into the app window and the file will upload to the designated folder on your NAS or Wuala cloud storage.



Additionally, you can use the "W" drive feature to manage files with a familiar Windows file folder view or Mac Finder view. Navigate to the "Computer" folder on your PC or open a Finder window on your Mac. You should see a new drive labeled "W:" or "Wuala". Inside the drive you will find two folders, one named after your Wuala login (this is your cloud storage) and the other labeled "Devices" (inside are the NAS devices associated with your account). The W drive feature works inside and outside of your local network. When traveling, all you need is an Internet connection to stay connected to your files. The W drive offers the most intuitive experience for remotely accessing files since you can navigate through your content just like any other folder stored on your computer.

Finally, the Wuala desktop app gives you the option to automatically sync files between your PC and NAS (or Wuala cloud storage). Begin by selecting "Sync" from the drop down menu labeled "Add" on the left side of the app window. Select the folder on your PC or Mac you would like to sync, and then select a folder on the NAS or Wuala Cloud. Hit OK and your files will begin to sync. Syncing is two-way, so if you make a change in either folder, it will sync to the other.

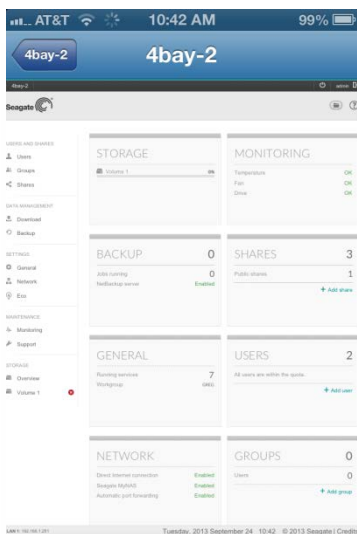


Wuala: Mobile App



The Wuala mobile app can be installed from the Apple app store or Google Play store. Once installed, you can login with your Wuala account to access files and manage your NAS device remotely.

From the home screen of the app, tap on the "Devices" icon to view the NAS devices accessible by your Wuala account. Tap on a device to see the shared folders you have access to. Before tapping on one of the shared folders, you also have the option of tapping on the wrench icon on the bottom center of the screen. This will take you to the NAS OS management interface.



By tapping on one of the shared folders, you can navigate through the files you have access to with your Wuala account. When tapping on a photo, it opens full screen and introduces options at the bottom of the screen for additional tasks. Swipe the photo left or right to advance to the next photo in the folder. Tap on the Pin icon to save the photo within the Wuala app for easy access in the future or for when you want offline access to the photo. Tap on the camera icon to save the photo to your camera roll. Tap on the share icon (Square with an arrow coming out of it) to open the photo with another app on your device or to share with various methods using the options built into your devices OS.



Finally, tap on the paperclip icon to send the photo as an email attachment. Opening other document types gives you similar options at the bottom of the screen. If you open items such as music or videos, note that the entire file must first be downloaded and decrypted before it can be opened. Although this is less convenient than streaming a file, it offers enhanced security for business users.

