

3 YEAR LIMITED WARRANTY

WWW.SEAGATE.COM

- Visit us at our Support pages for assistance with
- **Installation:** Additional instructions and troubleshooting assistance
- **KnowledgeBase:** FAQ's, How to use this product
- **Download Center:** Installation software, utilities, and diagnostics
- **Warranty Information**
- And all of your other storage needs

A soft copy of your comprehensive **User Guide** is included with your product. Click the **Help icon** for assistance.

To contact Support, visit us at our **Contact Us** page.

© 2009 Seagate Technology LLC. All rights reserved. Seagate, Seagate Technology, the Wave logo, and BlackArmor are trademarks or registered trademarks of Seagate Technology LLC or one of its affiliated companies in the United States and/or other countries. All other trademarks or registered trademarks are the property of their respective owners. When referring to hard drive capacity, one gigabyte, or GB, equals one billion bytes and one terabyte, or TB, equals one thousand billion bytes. Your computer's operating system may use a different standard of measurement and report a lower capacity. In addition, some of the listed capacity is used for formatting and other functions and will not be available for data storage. Seagate reserves the right to change, without notice, product offerings or specifications.

Seagate Technology LLC
920 Disc Drive
Scotts Valley
CA 95066 U.S.A.



PN: 100560508 02/09



BLACKARMOR® | NAS 440/420

Quick Start Guide



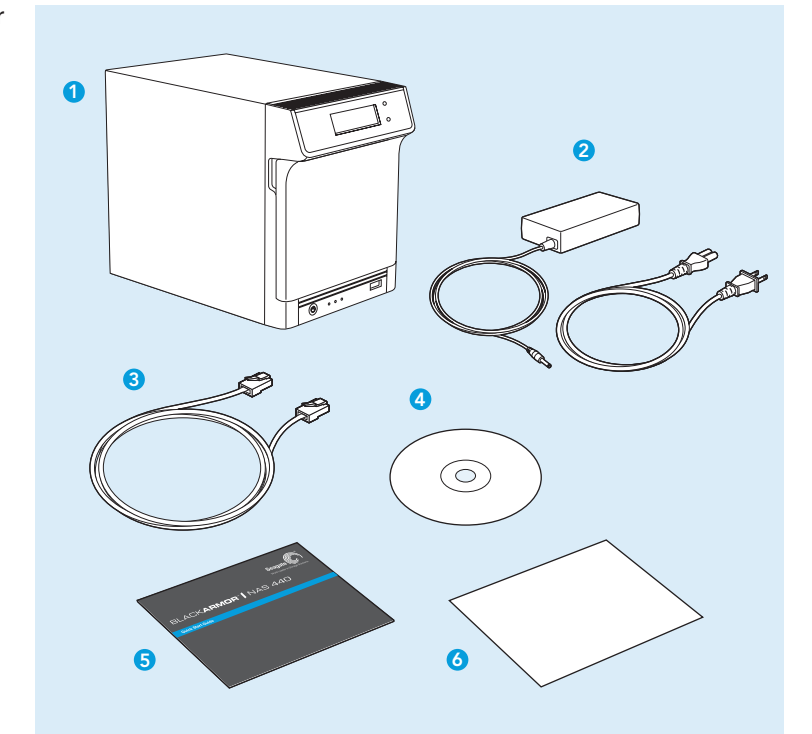
BlackArmor® NAS 440/420 Quick Start Guide

Welcome to your BlackArmor Network Attached Storage (NAS) server *Quick Start Guide*. This guide will help you complete a basic installation using a computer running Windows or Mac.

If you need an introduction to the server first, or would like help understanding the setup process before you begin, read the *BlackArmor User Guide*.

Kit Contents

1. Seagate BlackArmor NAS Server
2. Power Adapter
3. Ethernet cable
4. Installation CD
5. Quick Start Guide
6. Warranty card/flyer



A Quick Tour of BlackArmor® Server Features

1 LCD Screen

The LCD screen on the front of your BlackArmor server displays current server settings and status information, including "event" messages that appear when a problem occurs on the server. Use the buttons beside the screen to scroll up and down through the available information. Press and hold either button to reveal more detail about currently displayed information.

For more information, see the *BlackArmor User Guide*.

2 LED Signals

The LEDs on the front of your BlackArmor server indicate server status and network activity, as described in this table:

LED	STATE	INDICATION	ACTION TO TAKE
Power	Solid Blue	Server is powered on and ready for use.	No action required.
	Blinking Blue	Server is powering on. RAID system is rebuilding.	Wait until this LED stops blinking before accessing the server.
System Status	On (Blue)	Server is ready for use.	No action required.
	On (Amber)	Server has a system error.	Check the LAN port and disk drive LEDs to locate the source of the problem. Refer to the BlackArmor User Guide for help solving problems.
LAN Port 1 and 2	Solid Blue	Network connection is detected.	No action required.
	Blinking Blue	Network connection is busy.	No action required.
	Off	No network connection is detected.	Check Ethernet cables, switch/router cables, and Internet connection for disruption.

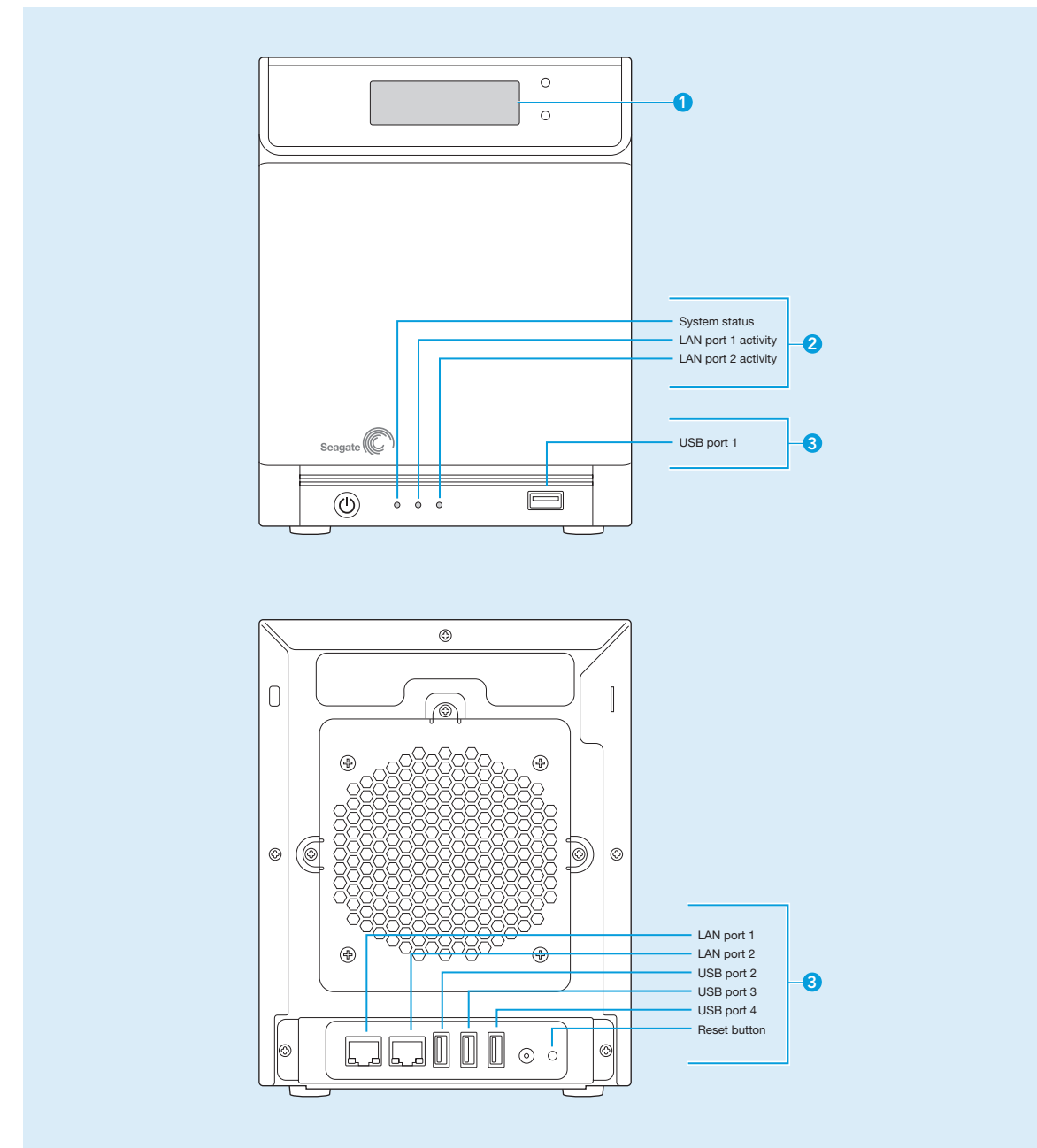
When the LEDs indicate a change in settings or status, information about this change appears on the LCD screen.

For more information, including a description of all the LEDs on the server, see the *BlackArmor User Guide*.

3 Ports

Your BlackArmor server has two Ethernet ports for local network connection, port failover and NAS to NAS replication. Use LAN port 1 or LAN port 2 for connecting the BlackArmor server to your local network and use LAN port 2 alone to set up replication, where an exact copy of the data on your BlackArmor server is created and maintained on a second server.

For more information, see the *BlackArmor User Guide*.



BlackArmor® Server Backup Software

The CD includes BlackArmor Backup, software that you can use to set up and manage a file backup program that suits your needs.

If you didn't install BlackArmor Backup during setup, you can choose to install it from the CD at any time.

By default, your BlackArmor Backup license supports up to 10 users. You can increase the number of people who can use BlackArmor Backup by purchasing an upgrade. See www.seagate.com for details.

For more information about BlackArmor Backup, see the *User Guide*.

Finding More Information

For help using BlackArmor Discover and BlackArmor Manager, see:

- The *BlackArmor User Guide*
- The Discover and Manager online Help

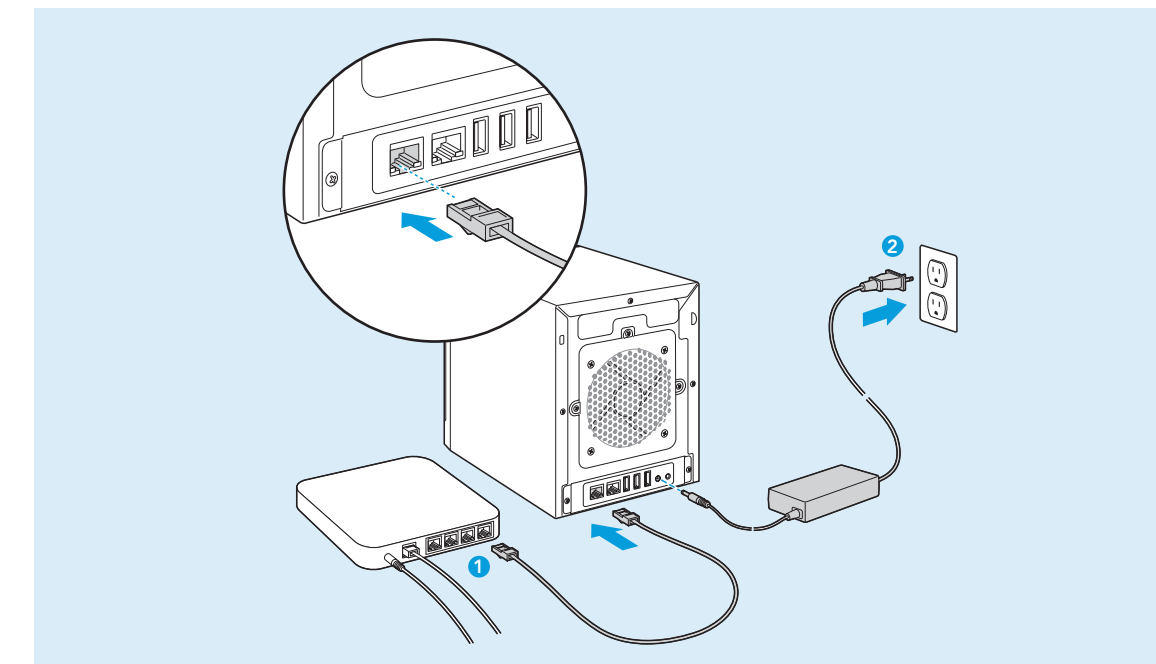
For help using BlackArmor Backup, see:

- The *BlackArmor Backup User Guide*
- The BlackArmor Backup online Help

For more information, see the Seagate Knowledge Base.

Setting Up Your BlackArmor® Server

1. Connect the server.



Setting Up Your BlackArmor® Server

2. Install and open BlackArmor Discovery.

- Insert the installation CD into your computer. The installation wizard opens automatically.
- Follow the on-screen instructions to complete the installation. Install both BlackArmor Discovery and BlackArmor Backup unless you are already using another backup software program.
- Open BlackArmor Discovery by double-clicking the icon on your desktop (Windows) or in your Applications folder (Mac).

3. Link to your BlackArmor server and open BlackArmor Manager.

When BlackArmor Discovery opens, it automatically begins searching for all NAS servers on your network.

- (Windows) From the list of discovered servers, select your BlackArmor server, click [View Drive Details](#) to see pre set share (folders) ready for use. To manage or change the default settings click [Manage](#).

(Mac) From the list of discovered servers, select your BlackArmor server, then click [Manage](#). **Note:** You can open BlackArmor Discovery again at any time by double-clicking the icon on your desktop (Windows) or in your Applications folder (Mac).

- Follow the on-screen instructions to complete the initial setup. When prompted, log in using the default settings. (The password is case-sensitive.)
user name: `admin`
password: `admin`

Setting Up Your BlackArmor® Server

Note: Your BlackArmor server comes with other default settings to help you get started storing, sharing, and protecting your files right away:

- Preconfigured user accounts — Admin and Guest
- Preconfigured shared folders, or shares — Download, Media Library, and Public
- Preset data protection level — RAID 5 (BlackArmor NAS 440) and RAID 1 (BlackArmor NAS 420)

4. Customize the administrator user name and password.

- Select the **System** tab, then click [Admin Password](#).
- Enter the old password (admin).
- Enter and re-enter a new password. Passwords can be up to 15 alphanumeric characters long and are case-sensitive.
- Click [Submit](#).

Setup is complete.

Next Steps

- Learn more about the features of your BlackArmor server and how you can customize your server's settings to meet your needs by reviewing the *BlackArmor User Guide*.
- Save your files to the server and share them with others. For help getting started, see "Next Steps for Administrators" in the *BlackArmor User Guide*.
- Have other users on your network get started by installing BlackArmor Discovery and BlackArmor Backup. For more information, see "Next Steps for Users" in the *BlackArmor User Guide*.
- Back up your files using BlackArmor Backup. For more information, see the *BlackArmor User Guide*.