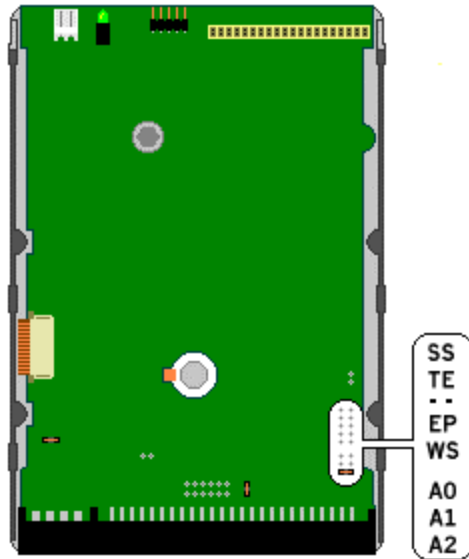


LPS™ 52/80/105



Configuration Guide

Jumper Settings

Set SCSI ID

SCSI ID	A0	A1	A2
0	Off	Off	Off
1	On	Off	Off
2	Off	On	Off
3	On	On	Off
4	Off	Off	On
5	On	Off	On
6	Off	On	On
7	On	On	On

Note: LPS SCSI does not use a jumper to determine termination. The drive utilizes resistor packs.

Drive Termination

Enable Termination	Install terminators
Disable Termination	Remove terminators

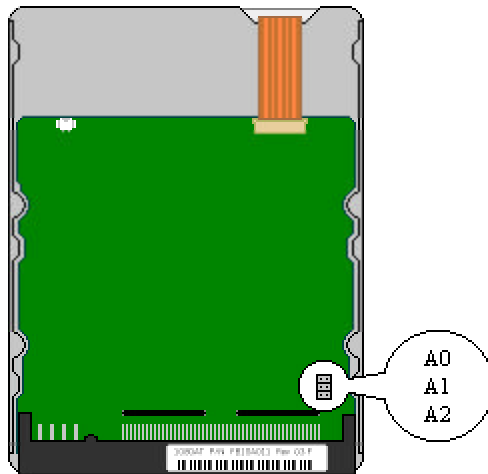
Parity

Enable parity	EP jumper on
Disable parity	EP jumper off

Spin delay:

Enable spin delay	WS jumper on
Disable spin delay	WS jumper off

LPS™ 127/170/340/420



SCSI Configuration Guide

Jumper Settings

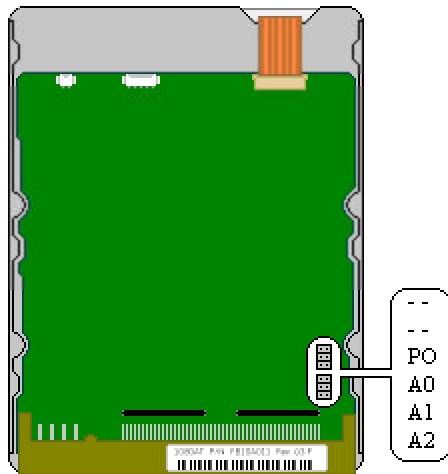
Drive Termination

Enable Termination	Install terminators
Disable Termination	Remove terminators

Set SCSI ID

SCSI ID	A0	A1	A2
0	Off	Off	Off
1	On	Off	Off
2	Off	On	Off
3	On	On	Off
4	Off	Off	On
5	On	Off	On
6	Off	On	On
7	On	On	On

LPS™ 270/540



SCSI Configuration Guide

Jumper Settings

Drive Termination

Enable Termination	Install terminators
Disable Termination	Remove terminators

Set SCSI ID

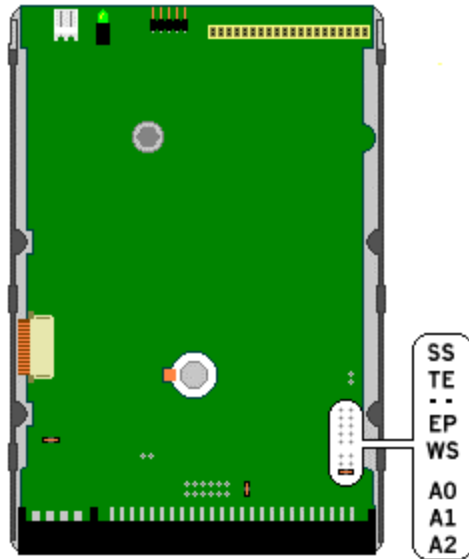
SCSI ID	A0	A1	A2
0	Off	Off	Off
1	On	Off	Off
2	Off	On	Off
3	On	On	Off
4	Off	Off	On
5	On	Off	On
6	Off	On	On
7	On	On	On

Parity

Enable parity
Disable parity

PO jumper on
PO jumper off

LPS™ 525/700/1050/1225/1800



Configuration Guide

Jumper Settings

Drive Termination

Enable Termination	TE jumper on
Disable Termination	TE jumper off

Set SCSI ID

SCSI ID	A0	A1	A2
0	Off	Off	Off
1	On	Off	Off
2	Off	On	Off
3	On	On	Off
4	Off	Off	On
5	On	Off	On
6	Off	On	On
7	On	On	On

Parity

Enable parity
Disable parity

EP jumper on
EP jumper off

Spin delay

Enable spin delay
Disable spin delay

WS jumper on
WS jumper off