

Configuration Guide

Jumper Settings

Set SCSI ID

SCSI ID	A0	A1	A2
0	Off	Off	Off
1	On	Off	Off
2	Off	On	Off
3	On	On	Off
4	Off	Off	On
5	On	Off	On
6	Off	On	On
7	On	On	On

Note: ProDrive SCSI does not use a jumper to determine termination. The drive utilizes resistor packs.

Drive Termination

Enable Termination	Install terminators
Disable Termination	Remove terminators

Parity

Enable parity

Disable parity

EP jumper on

EP jumper off

Spin Delay

Enable spin delay

Disable spin delay

WS jumper on

WS jumper off

ProDrive™ ELS

Configuration Guide

Jumper Settings

Drive Termination

Enable Termination

Install terminators

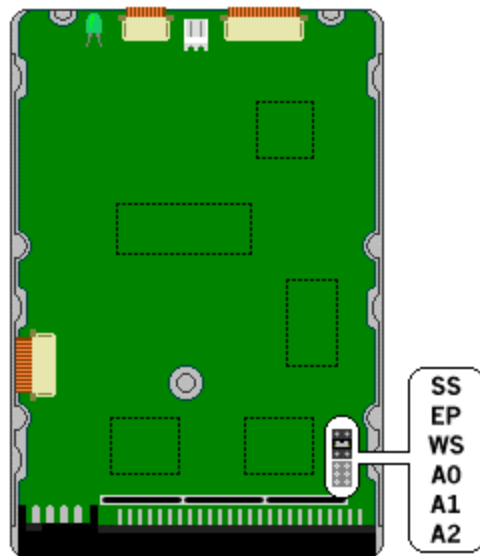
Disable Termination

Remove terminators

Set SCSI ID

SCSI ID	A0	A1	A2
0	Off	Off	Off
1	On	Off	Off
2	Off	On	Off
3	On	On	Off
4	Off	Off	On
5	On	Off	On
6	Off	On	On
7	On	On	On

ProDrive™ LPS 120/240



Configuration Guide

Jumper Settings

Set SCSI ID

SCSI ID	A0	A1	A2
0	Off	Off	Off
1	On	Off	Off
2	Off	On	Off
3	On	On	Off
4	Off	Off	On
5	On	Off	On
6	Off	On	On
7	On	On	On

Note: LPS SCSI does not use a jumper to determine termination. The drive utilizes resistor packs.

Drive Termination

Enable Termination	Install terminators
Disable Termination	Remove terminators

Parity

Enable parity
Disable parity

EP jumper on
EP jumper off

Spin delay

Enable spin delay
Disable spin delay

WS jumper on
WS jumper off