

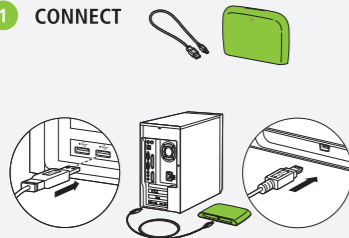
Replica™

Complete PC Backup System

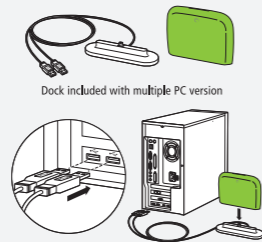
QUICK START GUIDE



1 CONNECT

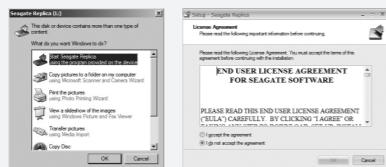


OR



2 Click OK to start your Replica Backup System. After completing product registration, accept the end user license agreement.

If nothing happens after connecting the Replica backup system to your PC, click on the Windows Start button, then click on My Computer (or Computer in Windows Vista). Then double-click on the Seagate Replica Backup System icon.



3 A Replica Backup System window informs you that the backup of your computer has already begun.

To access the Replica Backup System Help or change your settings, right-click on the Replica Backup System tray icon.

Once the initial backup has completed, you can browse the Replica Backup System by double-clicking the Replica Backup System icon on your desktop.

Note: When disconnecting the Replica Backup System, ensure that you follow the Safely Disconnect procedure. Right-click on the Replica Backup System icon in your system tray and select Safely Disconnect from the pop-up menu. You will be notified when it is safe to disconnect the Replica Backup System.



Keep the Replica Backup System Recovery CD, included in your product box, in a safe place.

If a system recovery is needed, see the Replica Backup System Recovery Guide, included with the Replica Backup System Recovery CD, for detailed instructions.

www.seagate.com

Visit us at our Support pages for assistance with:

- Installation: Additional instructions and troubleshooting assistance
- KnowledgeBase: FAQs, How to use this product
- Warranty Information

FCC DECLARATION OF CONFORMANCE

This device complies with Part 15 of the FCC Rules. Operation is subject to the following two conditions: (1) this device may not cause harmful interference, and (2) this device must accept any interference received, including interference that may cause undesired operation.

CLASS B

This equipment has been tested and found to comply with the limits for a Class B digital device, pursuant to Part 15 of the FCC Rules. These limits are designed to provide reasonable protection against harmful interference in residential installation.

This equipment generates, uses, and can radiate radio frequency energy and, if not installed and used in accordance with the instructions, may cause harmful interference to radio communications.

However, there is no guarantee that interference will not occur in a particular installation. If this equipment does cause harmful interference to radio or television reception, which can be determined by turning the equipment off and on, the user is encouraged to try to correct the interference by one or more of the following measures:

- Reorient or relocate the receiving antenna.
- Increase the separation between the equipment and receiver.
- Connect the equipment into an outlet on a circuit different from that to which the receiver is connected.
- Consult the dealer or an experienced radio/TV technician for help.

CAUTION: Any changes or modifications made to this equipment may void the user's authority to operate this equipment.

© 2009 Seagate Technology LLC. All rights reserved. Seagate, Seagate Technology, the Wave logo, and Replica are trademarks or registered trademarks of Seagate Technology LLC, or one of its affiliated companies in the United States and/or other countries. All other trademarks or registered trademarks are the property of their respective owners. When referring to hard drive capacity, one gigabyte, or GB, equals one billion bytes and one terabyte, or TB, equals one thousand billion bytes when referring to hard drive capacity. Your computer's operating system may use a different standard of measurement and report a lower capacity. In addition, some of the listed capacity is used for formatting and other functions, and thus will not be available for data storage.

Seagate Technology LLC
920 Disc Drive
Scotts Valley
CA 95066 U.S.A.

PN: 100561286 2/09

www.seagate.com

Illustrator 10

BLACK

PMS 376

Job#: 182113	Client: Seagate	Proof#: 2
File: 182113_A	Description 100561286_Replica_QSG	
Printer:	Date: 03.02.09	Operator: jw



650 Townsend Street, Suite 160
San Francisco, CA 94103 USA
T 415 438 6700

