

## **Instructions for installing the Windows 98SE drivers for the Seagate External Hard Drives.**

Assumption: It is assumed that the driver has been downloaded from the webpage on which these instructions were found.

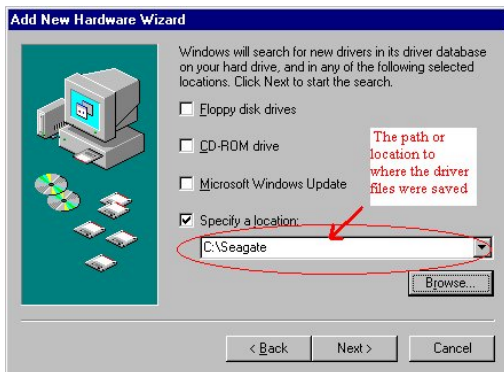
NOTE: This information is intended for legacy USB Seagate / Maxtor products. The Windows 98 and Windows 98 Second Edition operating system is not supported on current products.

- 1) **Extract the driver** files by double clicking the Exp\_Win\_Drivers.exe file you downloaded from the website. Remember where you extract the file to, it extracts to c:\Seagate by default.
- 2) **Plug in Power to the External drive**
- 3) **Plug the USB cable into the External drive and USB port of the system**
- 4) **Power on the external drive.**
- 5) Windows 98SE should attempt to detect the drive and start the New Hardware detection wizard when no drivers are found. Follow the prompts of the New Hardware Wizard. (Figure 1)
- 6) Select **Next** to continue to the 2<sup>nd</sup> screen of the wizard, then choose to “**Search for better driver...**”. Click **Next** again. (Figure 2)
- 7) Click the box next to **Specify a location**, and then uncheck the other boxes. In the text box next to Specify a Location, type **c:\Seagate** or click **Browse** (to the location to which the files were extracted in step 1). (Figure 3 and Figure 4)
- 8) Click **Next**
- 9) It should notify you that it found drivers for the Seagate External drive. Click **Next** (Figure 5) to continue.
- 10) The wizard will notify you that it has finished. Click **Next** (Figure 6) to finish.
- 11) The drive is now ready for use. It should now be available through My Computer or through Windows explorer.

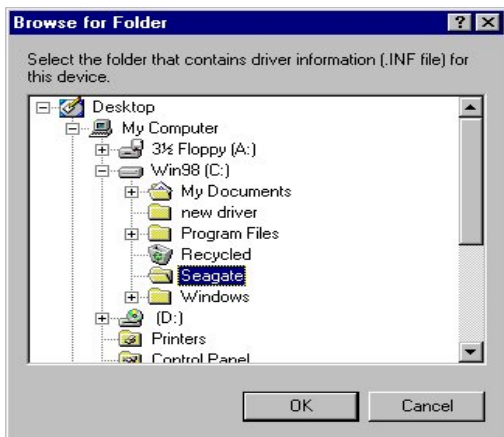
**Figure 1 - The new hardware wizard begins**



**Figure 2 - Search for better driver**



**Figure 3 - Specify a location c:\seagate\**



**Figure 4 – Click Browse to find the location to which the files were saved.**



**Figure 5 - Driver located**



**Figure 6 - Finished**