

Maxtor®



MAXTOR ONETOUCH™ III

FIREWIRE 400/USB 2.0 FOR WINDOWS® VISTA

User's Guide



MAXTOR ONETOUCH III FIREWIRE 400/USB 2.0 USER'S GUIDE

Contents

Windows Vista Installation

Introduction	1
About this Guide	1
Components	1
Included in Package	2
System Requirements	2
Interface Requirements	2
Handling Precautions	3
Maxtor Product Support	3
Installing the OneTouch III	4
Step 1 - Install the Software	4
Step 2 - Connect the Drive	7
Step 3 - Setup the Drive	9
Using the OneTouch III	10
Maxtor EasyManage	10
Maxtor EasyManage Utilities	12
Customizing the OneTouch Button	14
Security Settings	17
Unlock Drive	22
Erase Drive	23
Backup	25
Backup File Management	27
Restore	30
Sync	32
Automatic Sync	34
Rollback	35
OneTouch III Status Icons	38
OneTouch III Settings	41
Storing Audio	42
Editing Video	42
Playing Games	42
Installing Applications	42
Connecting and Disconnecting Your OneTouch III	42
Naming Your OneTouch III	43
Security Lock	43

MAXTOR ONETOUCH III FIREWIRE 400/USB 2.0 WINDOWS VISTA INSTALLATION

Introduction

Thank you for selecting a Maxtor product.

The new Maxtor OneTouch™ III, with FireWire 400/USB 2.0 interfaces, lets you access high-end graphics, photos and video files quickly, and connect easily with other computers.

This user's guide will help you setup your drive and includes helpful tips for performing backups and getting the most out of your new Maxtor OneTouch III Drive.

The Maxtor OneTouch III features:

- Dual interfaces: FireWire 400 and USB 2.0
- Maxtor OneTouch™ button - the simple way to backup your files
- Maxtor DriveLock™ security feature password-protects the contents of the drive in case of loss or unauthorized use
- Simple Maxtor user interface for drive management, security and backup scheduling

The Maxtor EasyManage features include:

- Security settings to password-protect your critical data
- Power management features to conserve energy when your Maxtor OneTouch III isn't being used
- Diagnostic utilities to check the health of your Maxtor OneTouch III
- Customizing the OneTouch button to open frequently-used programs
- Using Maxtor Backup to back up and restore data

About this Guide

The following symbols and conventions are used in this guide:

Bold Used for menu, command, and keyboard selections you make and screens you will see.

Italics Used for emphasis and to identify new terms.



Helpful information about a particular topic.



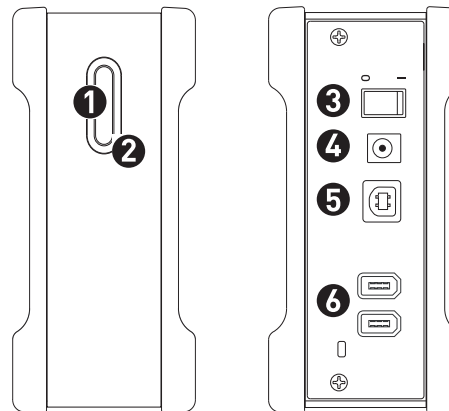
Important information to prevent problems and ensure that you are successful in using the drive.

Components

Before installing, review the solution features in Figure 1.

FIGURE 1 SOLUTION FEATURES

1. OneTouch Button
2. Status Light
3. Power Switch
4. Power Connector
5. USB 2.0 Port
6. FireWire 400 Ports



MAXTOR ONETOUCH III FIREWIRE 400/USB 2.0 WINDOWS VISTA INSTALLATION

FIGURE 2 INCLUDED IN PACKAGE

1. Backup Solution
2. Quick Start CD
3. Power Adapter
4. FireWire 400 Cable
5. USB 2.0 Cable



System Requirements

- Windows® Vista, 2000 Professional, XP Professional, or XP Home Edition
- 1 Ghz 32-bit (x86) processor
- 512MB RAM or more as required by the operating system
- Internet connection (for system updates)
- CD-ROM drive

Interface Requirements

- FireWire 400, IEEE 1394, i.LINK port
- USB 2.0 or 1.1 port



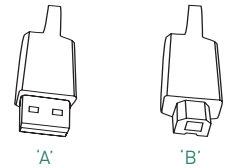
FireWire 400 6-pin to 6-pin FireWire 400 (1394a) cable.



Many laptop computers, have a smaller 4-pin FireWire port requiring a special 4-pin to 6-pin FireWire cable. This is not included, but can be purchased from your local computer store.



USB 2.0 'A' to 'B' USB cable.



A' connector, typically, plugs into your computer and the 'B' connector plugs into your drive. If your computer has a different type of USB connection, you can purchase the correct type of cable from your local computer store.



Though this model has both USB and FireWire interfaces, it is only possible to use one interface at a time.

All references to Windows 2000 actually refer specifically to Windows 2000 Professional.

USB 1.1 is slower than USB 2.0.

MAXTOR ONETOUCH III FIREWIRE 400/USB 2.0 WINDOWS VISTA INSTALLATION

Handling Precautions

Please handle your new Maxtor OneTouch III with care!

Follow the precautions listed here or you could damage your drive and void the product warranty. Review the Seagate Limited Warranty for more information.

Follow these Precautions to Prevent Data Loss

- **Do not** bump, move or drop the drive while in operation.
- **Do not** remove the interface cable or power cord without first disconnecting the drive properly through the operating system.
- **Do not** set any liquids or drinks on or near the drive. Liquids will damage the internal electronics.
- **Do not** open the drive enclosure. This can cause loss of data and will void the product warranty.

Maxtor Product Support

Seagate Technology provides a comprehensive product support section on its web site, including the latest software drivers, product specifications, a complete troubleshooting section, and the Seagate Knowledge Base.

Maxtor USA Support

Visit www.seagate.com for the following information:

- **Search the Hard Drive Knowledge Base**
We store all resolved problems and FAQ's in our knowledge base. Search by product, category, keywords, or phrases.
- **My Stuff**
Login to modify or view your FAQ update notifications or update your personal profile.

Seagate Global Customer Support

Visit www.seagate.com and click **Support** or **Contact Us** for product support outside of the USA.

MAXTOR ONETOUCH III FIREWIRE 400/USB 2.0 WINDOWS VISTA INSTALLATION

Installing the OneTouch III

NOTE: Please install the Maxtor EasyManage software **before** connecting the OneTouch III drive to your computer. You must first install this software in order to use the OneTouch button and other OneTouch III features.

Step 1 – Install the Software

You must have Administrator Access to install the software.

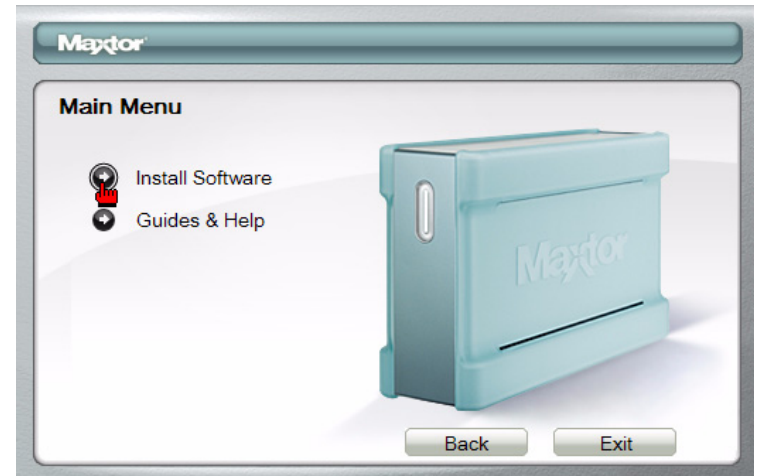
1. Turn on your computer.
2. Download and extract the installation software from the Seagate website.
3. Browse to the installation software on your PC and double-click **launch.exe**.

NOTE: In the event that Windows Vista prompts you with the **User Access Control** window for **launch.exe**, click **Continue**.

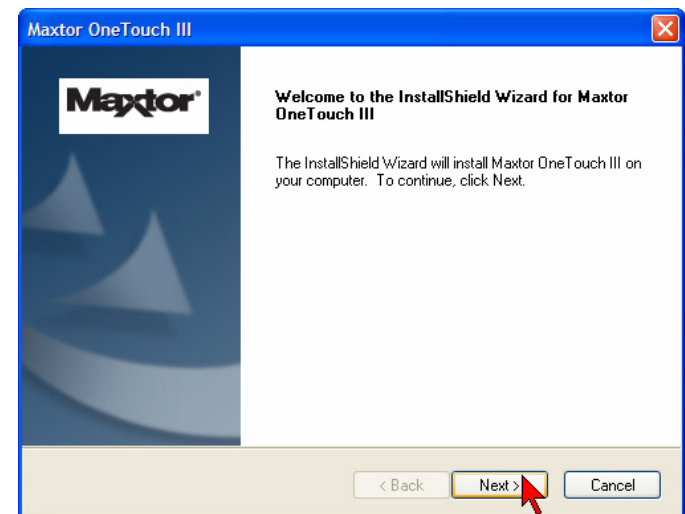
4. The Select Language screen will appear.



5. Select Install Software.



6. The InstallShield welcome screen will open.



Click Next.

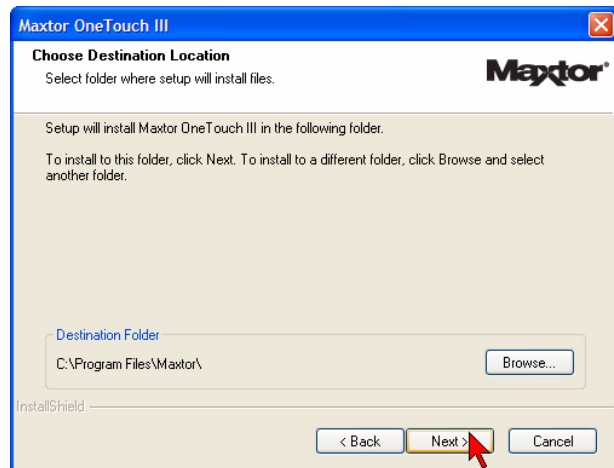
MAXTOR ONETOUCH III FIREWIRE 400/USB 2.0 WINDOWS VISTA INSTALLATION

7. The License Agreement screen will appear.



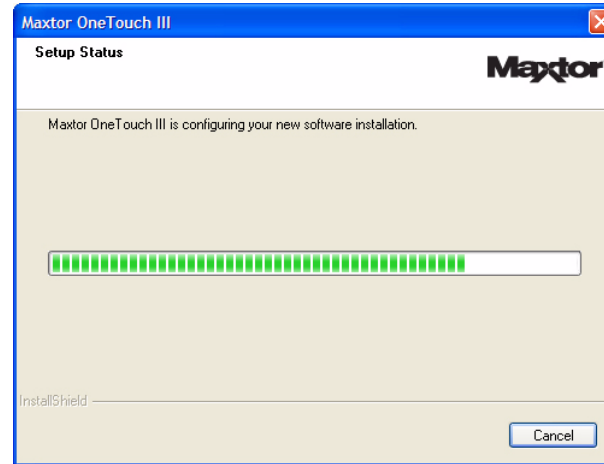
After reading the License Agreement, click **Yes**.

8. The **Choose Destination Location** screen will appear. In the **Destination Folder** section of the screen, you can see where the Maxtor software will be installed. If you wish to change this, click **Browse** and choose a new location.



When you are ready, click **Next**.

9. The Setup Status window will appear.

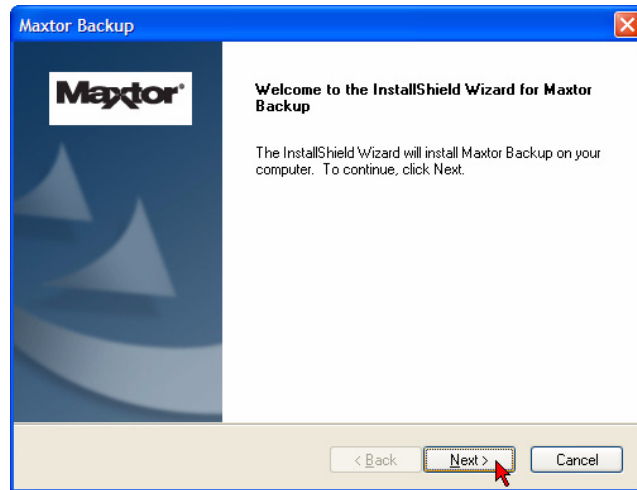


10. The InstallShield Wizard Complete window will appear.

Click **Finish**.

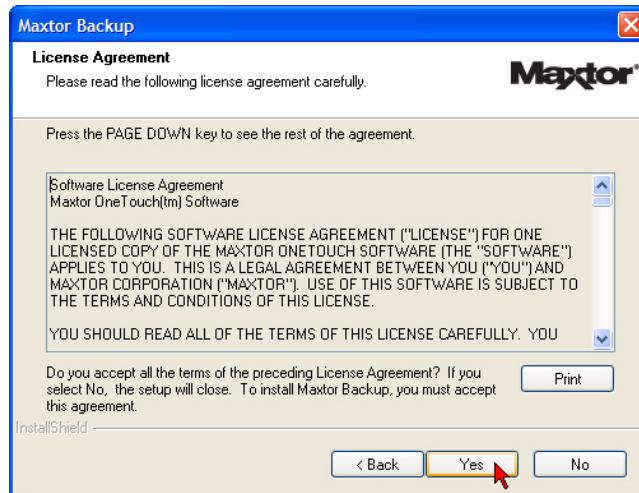
MAXTOR ONETOUCH III FIREWIRE 400/USB 2.0 WINDOWS VISTA INSTALLATION

11. The Maxtor Backup InstallShield Wizard welcome screen will appear.

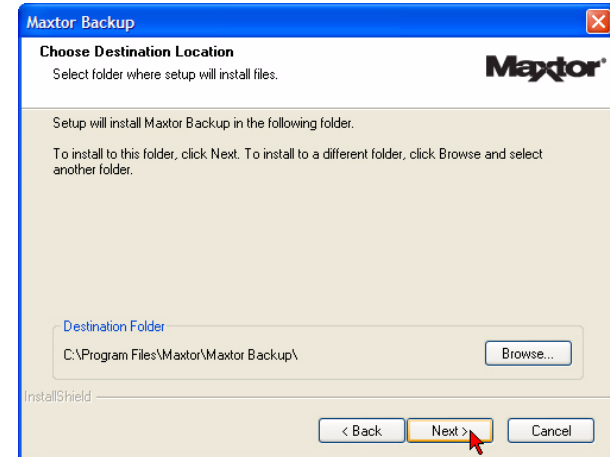


Click **Next**.

12. The **License Agreement** screen will appear. After reading the agreement, select "I accept..." and click **Yes**.



13. The **Choose Destination Location** screen will appear.

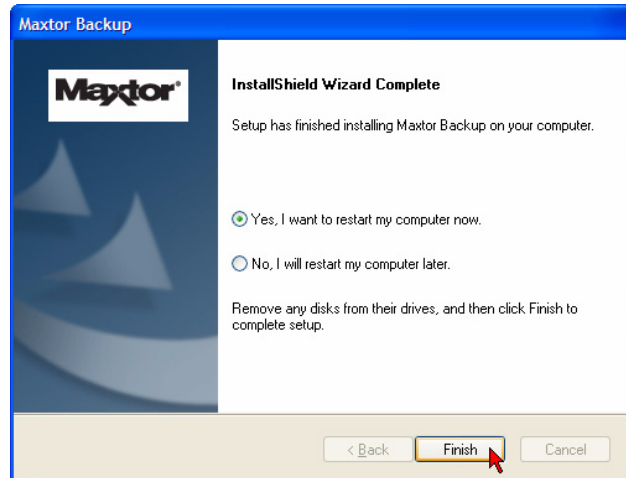


In the Destination Folder section of the screen, you can see where the Maxtor software will be installed. If you wish to change this, click **Browse** and choose a new location. When you are ready, click **Next**.

14. The Setup Status window will appear as Maxtor Backup installs to your computer.

MAXTOR ONETOUCH III FIREWIRE 400/USB 2.0 WINDOWS VISTA INSTALLATION

15. After the software is installed on your computer, the message "InstallShield Wizard Completed" will appear.



Click **Finish**.

16. The **Welcome to Maxtor OneTouch Setup** screen will appear and a **Maxtor EasyManage** shortcut icon will appear on your desktop.



17. Eject the **Maxtor Install CD** from your computer.

18. Proceed to Step 2 – Connect the Drive.

Step 2 – Connect the Drive

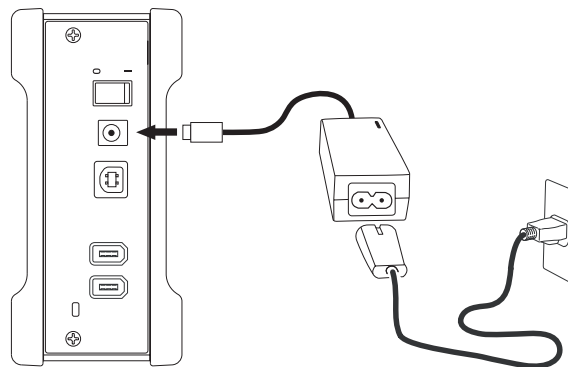
The Maxtor OneTouch III connects to your computer using either a FireWire or USB interface. Make sure you know which interface is available on your computer.

Please install the software **BEFORE** you connect the drive.

Connecting the Power

1. Plug the round female connector from the power adapter into the drive's power connector.
2. Plug the two-pin female connector on the power cord into the power adapter.

FIGURE 3 CONNECTING THE POWER



3. Plug the standard electrical plug from the power adapter into your power source.
4. Turn on the Maxtor OneTouch III using the power switch on the back of the drive. The light on the front of the drive should illuminate.

MAXTOR ONETOUCH III FIREWIRE 400/USB 2.0 WINDOWS VISTA INSTALLATION

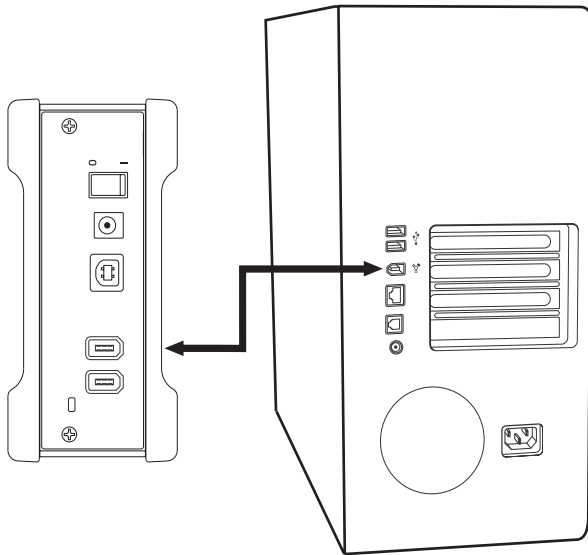
Connecting with a FireWire 400 Cable



Do not plug a FireWire cable into the drive when a USB cable is already connected to the drive. This drive will only operate with one interface at a time.

1. Plug one end of the FireWire cable into an available FireWire 400 port on your computer or to any other FireWire 400 device that is connected to your computer.

FIGURE 4 CONNECTING TO A FIREWIRE 400 PORT



2. Plug the other end of the FireWire 400 cable into the FireWire 400 port on the back of the drive.
3. Proceed to Step 3 – Setup the Drive.

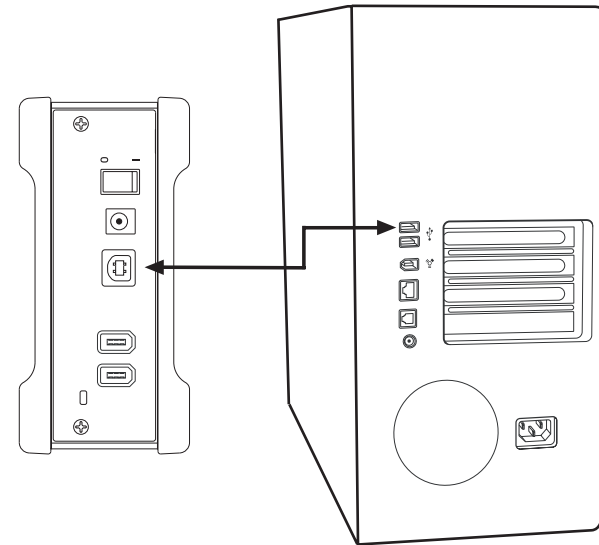
Connecting with a USB Cable



Do not plug a USB cable into the drive when a FireWire cable is already connected to the drive. This drive will only operate with one interface at a time.

1. Plug the larger end of the USB cable into an available USB port on your computer.

FIGURE 5 CONNECTING TO A USB PORT



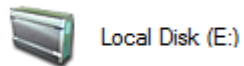
2. Plug the smaller end of the USB cable into the USB port on the back of the drive.
3. Proceed to Step 3 – Setup the Drive.

MAXTOR ONETOUCH III FIREWIRE 400/USB 2.0 WINDOWS VISTA INSTALLATION

Step 3 - Setup the Drive

If the **Welcome to Maxtor OneTouch Setup** screen is still visible, click **Cancel** to close it. Your computer may require a restart to complete the hardware installation.

Your new drive will appear in the same way as your other drives, with a letter assigned to it by the operating system. The assigned letter will vary depending upon the number of other drives connected to your computer.

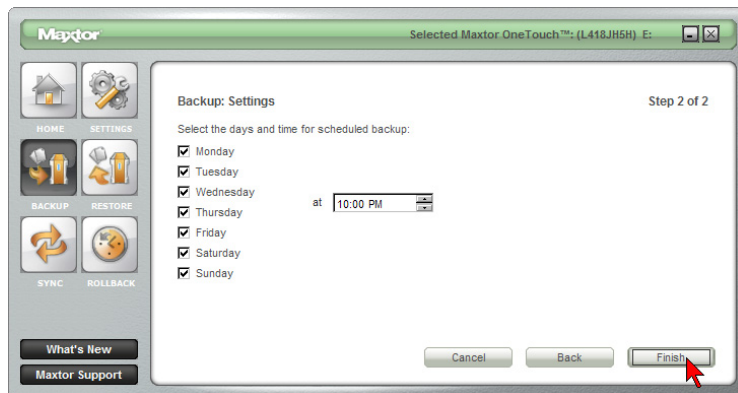


1. Press the **OneTouch** button. The Maxtor EasyManage software launches into the **Backup: Settings Step 1 of 2**.
2. Select the folders you wish to back up.

Click **Next**.

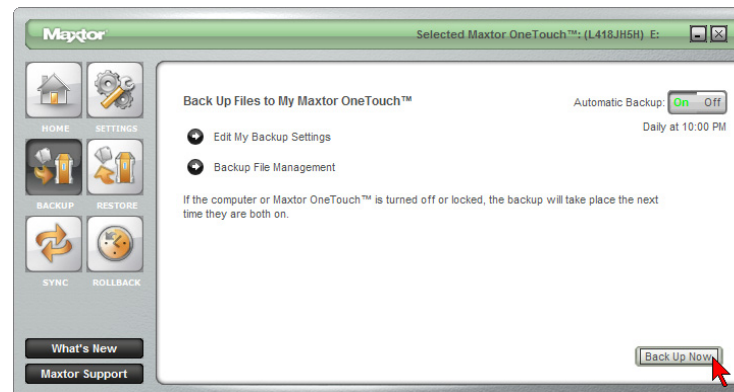
Backup: Settings Step 1 of 2

1. Check which **days** you want your folders to be backed up and enter the **time** that you want your backup to start.



Click **Finish**.

2. The **Back Up Files to My Maxtor OneTouch** screen is displayed.



To launch your first backup, click **Back Up Now**.

You can now back up your computer:

- Perform a backup at any time by pressing the **OneTouch** button, or
- Right-click on the Maxtor icon in the System Tray and select **Back up now**, or

Allow Maxtor Backup to automatically run at the next scheduled backup time.

MAXTOR ONETOUCH III FIREWIRE 400/USB 2.0 WINDOWS VISTA INSTALLATION

Using the OneTouch III

Once installed, you can use your new Maxtor OneTouch III in the same way you use the other drives on your computer. Some of the basic ways you can use your new drive are:

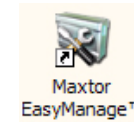
- Move or copy files or folders from your other drives, CD-ROMs, or other storage devices.
- Within virtually any application, save files to and open files from the new drive.
- Store video files, games, spreadsheets, and other commonly used files.
- Store copies of important files from your desktop or laptop computer.

In this chapter, you can learn how to use the advanced features of the Maxtor OneTouch III, including:

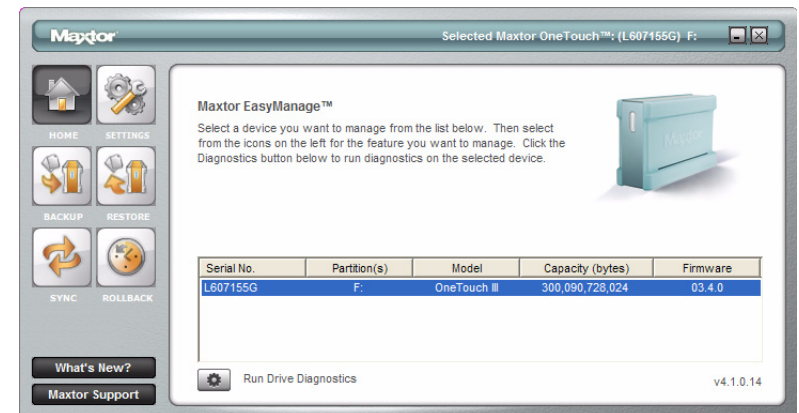
- Using the Maxtor EasyManage to back up and restore your data
- Power management features
- Customizing the OneTouch button
- Sync and system rollback
- Security settings
- Diagnostic utilities

Maxtor EasyManage

You can access the Maxtor EasyManage software by double-clicking its desktop shortcut.



This launches EasyManage.



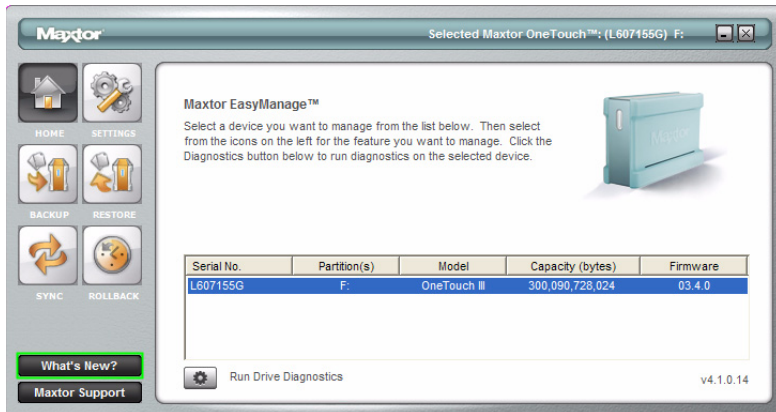
NOTE: Serial Number entries will be populated with your Maxtor OneTouch III's information.

The EasyManage program contains a myriad of utilities that help you protect your data. Along with Maxtor Backup, Maxtor EasyManage software provides the following:

- Access to Seagate's Web-based support
- Security through Maxtor's DriveLock and System Rollback
- Folder Sync
- Access to Maxtor Backup via Backup and Restore
- Disk diagnostics to monitor the health of you OneTouch III
- OneTouch settings control the DriveLock feature, including power management, and OneTouch button customization.

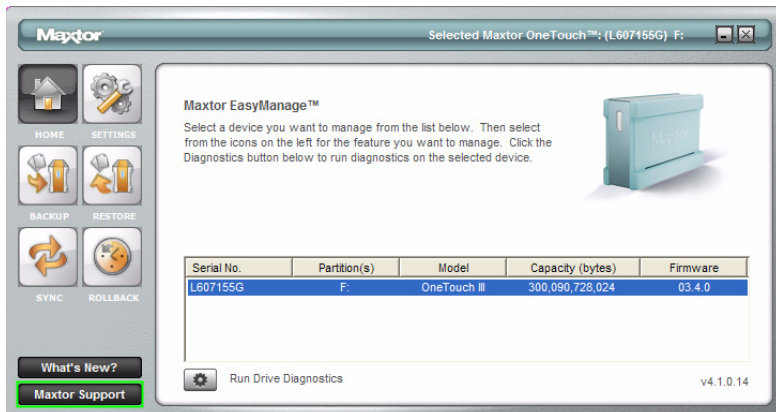
MAXTOR ONETOUCH III FIREWIRE 400/USB 2.0 WINDOWS VISTA INSTALLATION

Other Options



What's New – Click this and you'll travel to Maxtor's Branded Products website where you can learn the latest about OneTouch III's new features.

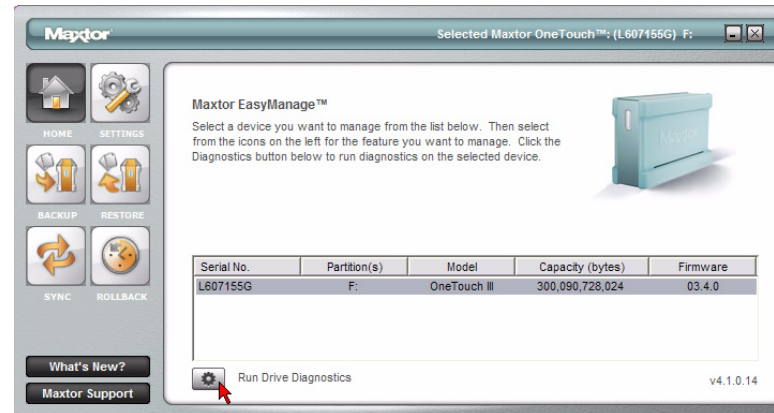
Maxtor Support - By clicking the Maxtor Support button, you will be transported to Seagate's Knowledge Base.



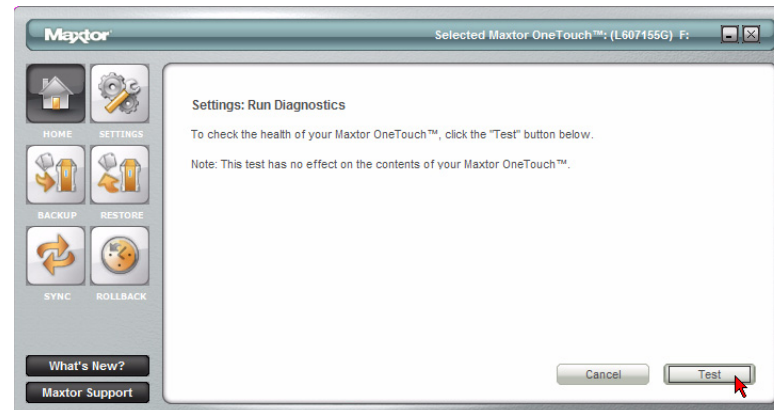
Diagnostic

If you suspect there may be problems with your Maxtor OneTouch III drive, you can run the diagnostic test.

From the EasyManage Home Screen, click the **Diagnostics** button.

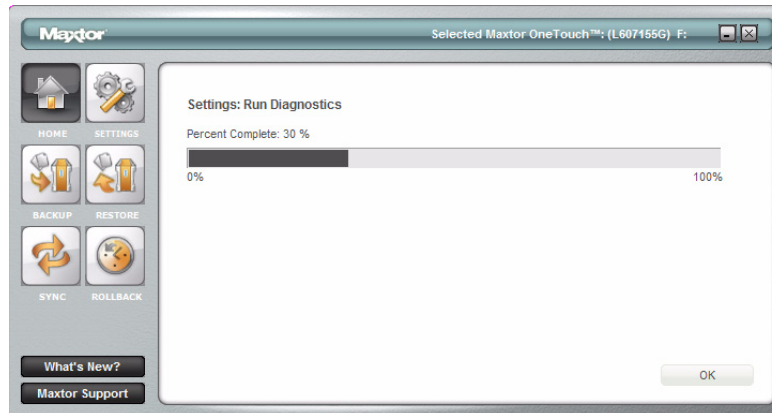


The **Settings: Run Diagnostics** window opens. To check the health of your OneTouch III, click the **Test** button.

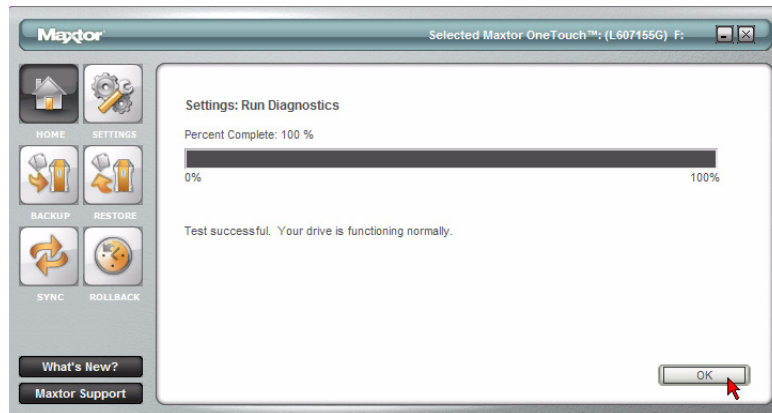


MAXTOR ONETOUCH III FIREWIRE 400/USB 2.0 WINDOWS VISTA INSTALLATION

During the diagnostic, a status bar will display the percent completed.



When finished, a message will appear indicating test was successful. Click **OK** to return to the EasyManage Home screen.



If the test finds your drive to be defective, an error code displays that you will use to return your drive for replacement under warranty.

Maxtor EasyManage Utilities

The **Settings Utilities** contains many features that allow you to adjust and down times, adjust performance, said password level security, and customize your OneTouch button. Press the **SETTINGS** button to access these utilities.

Adjust Power Setting

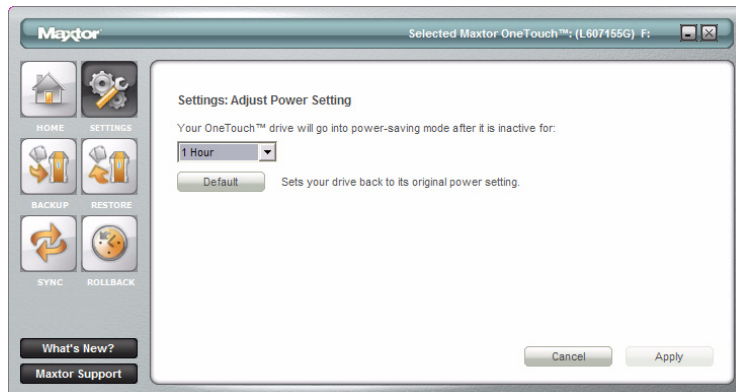
This feature allows you to spin down your Maxtor OneTouch III during times of inactivity. By default, the OneTouch III's spin down time is 1 hour. To adjust the setting:

1. Click the **Settings** button. This will open the **Settings for My Maxtor OneTouch** menu.
2. Click the **Adjust Power Setting** button.

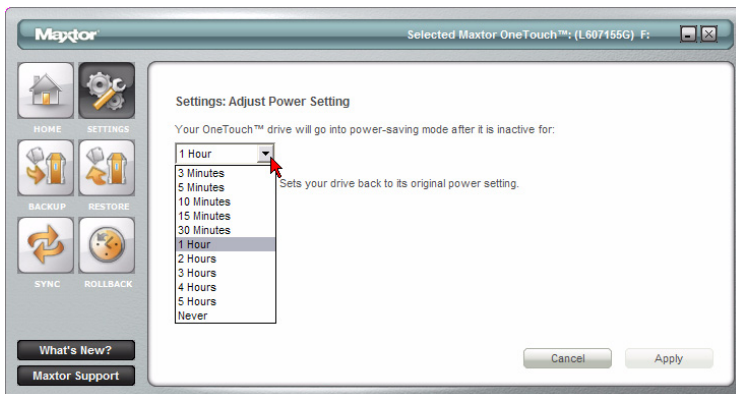


MAXTOR ONETOUCH III FIREWIRE 400/USB 2.0 WINDOWS VISTA INSTALLATION

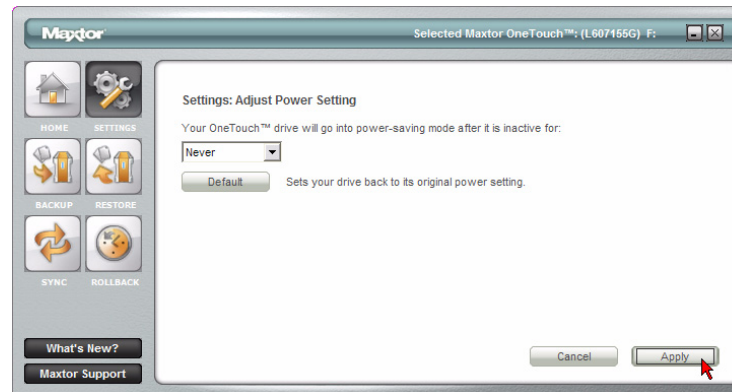
3. You will see the following:



4. Click the triangle to display options located in the drop-down menu.

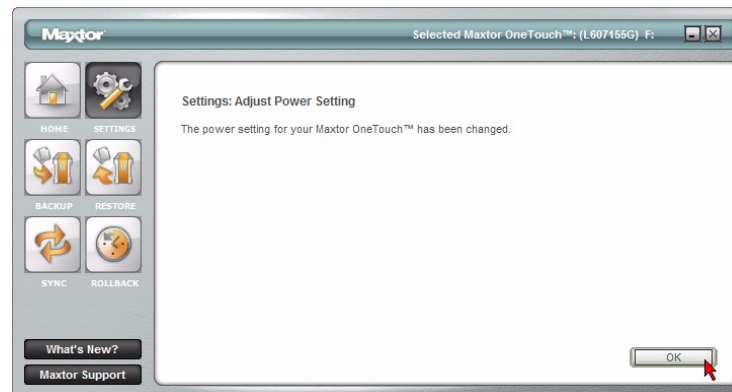


5. Select one of the available options.



Click Apply.

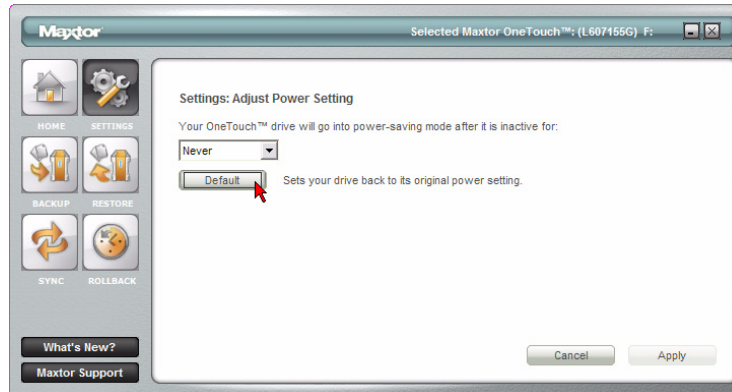
6. You will be notified that the Power Setting has been adjusted.



Click OK.

MAXTOR ONETOUCH III FIREWIRE 400/USB 2.0 WINDOWS VISTA INSTALLATION

- At any time, you can return to the **Adjust Power Setting** menu and adjust the spin down time to meet your needs. For example, if you wish to return the drive back to its original default setting, you can access the Adjust Power Setting menu.



Click **Default**.

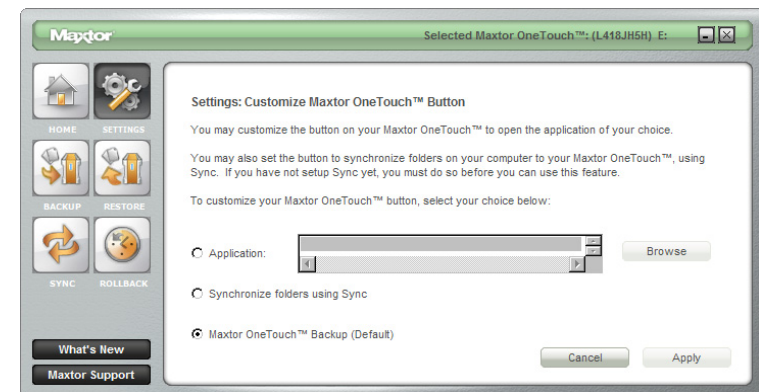
Click **Apply** followed by **OK** and your Maxtor OneTouch III's power settings will return back to its original spin down time of 1 hour.

Customizing the OneTouch Button

This feature allows you to change the way that the OneTouch button responds when you press it. By default, the OneTouch Settings, Backup Now: Step 1 of 2 launches when you press the OneTouch button.

To Customize Your OneTouch Settings

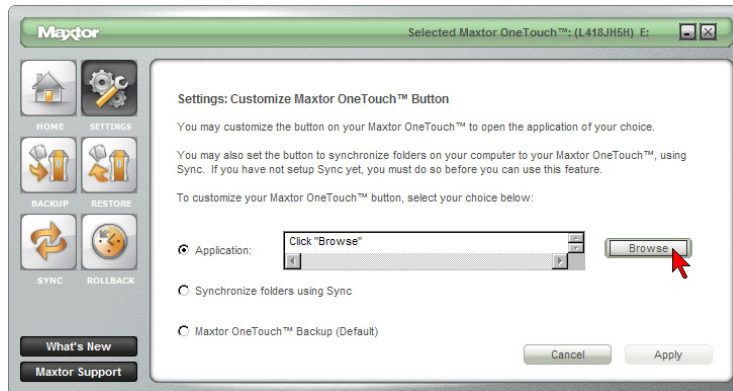
- Click the **Settings** button. This will open the **Settings for My Maxtor OneTouch** menu.
- Click the **Customize OneTouch** button.
- You will see the following menu.



The Maxtor OneTouch button is set by default to launch a backup.

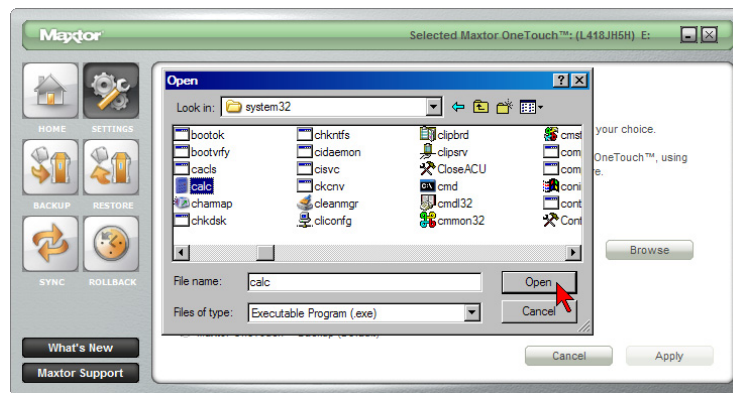
MAXTOR ONETOUCH III FIREWIRE 400/USB 2.0 WINDOWS VISTA INSTALLATION

4. To associate the button so that it launches an application, click the **Application** button.



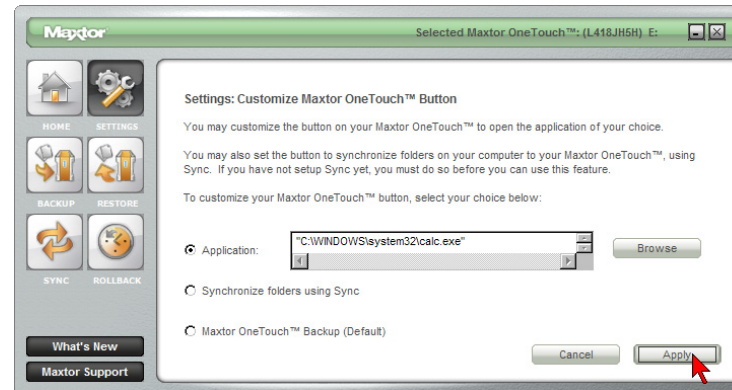
Click **Browse**.

5. **Browse** your PC and select an application that you would like to associate with the OneTouch button.



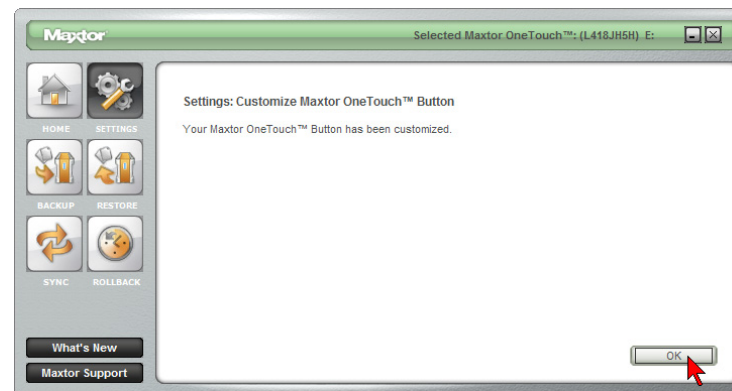
In this example, we are using the Windows Calculator program.

6. After the name of the application has populated the **Browse** field, click the **Apply** button.



Click **Apply**.

7. You will be notified that the OneTouch button settings have been customized.

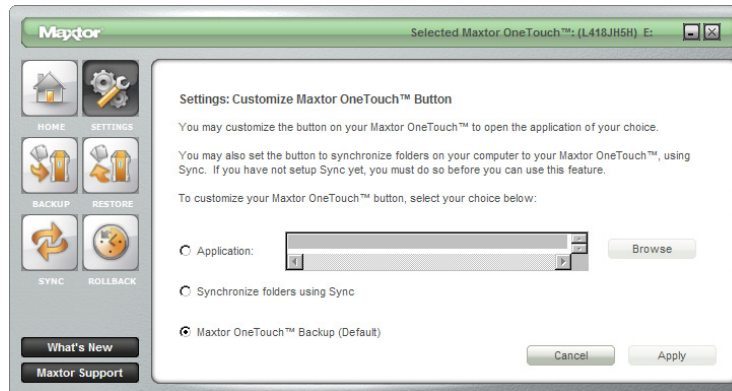


Click **OK**.

MAXTOR ONETOUCH III FIREWIRE 400/USB 2.0 WINDOWS VISTA INSTALLATION

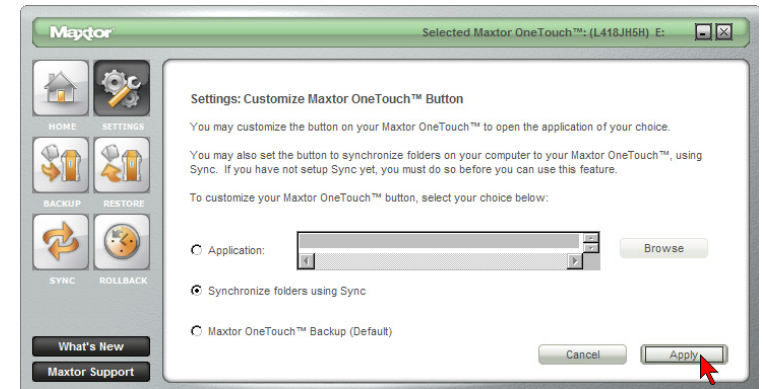
You can also customize the one touch button so that when pressed, you will launch the Maxtor Sync program. To do this:

1. Click the **Settings** button. This will open the **Settings for My Maxtor OneTouch** menu.
2. Click the **Customize OneTouch** button.
3. You will see the following menu.



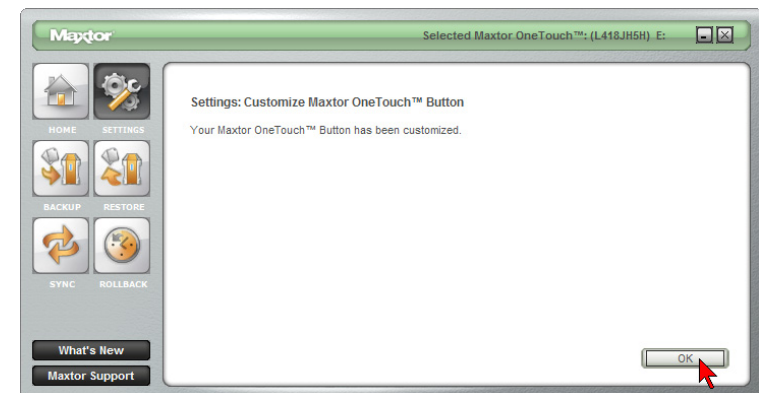
The Maxtor OneTouch button is set by default to launch a backup.

4. To associate the button so that it launches an application, click the **Synchronize folders using Sync** button.



Click **Apply**.

5. You will be notified that the OneTouch button settings have been customized.



Click **OK**.

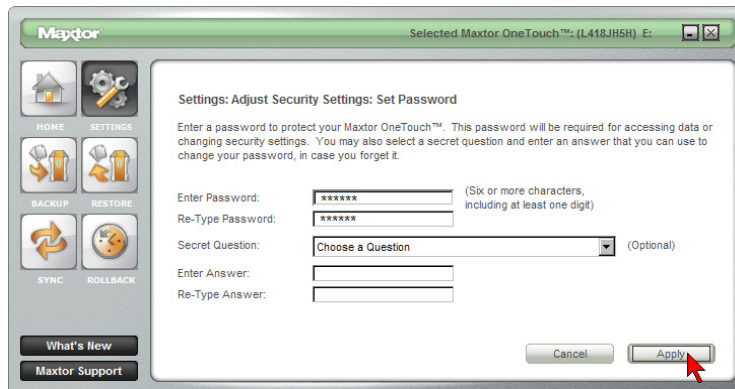
MAXTOR ONETOUCH III FIREWIRE 400/USB 2.0 WINDOWS VISTA INSTALLATION

Security Settings

This feature allows you to password protect your OneTouch III drive soon that in the event that this drive is lost/stolen, no one will be able to access its data unless they provide either the password or if added, the answer that you provided to a secret question.

Set Password

1. Click the **Settings** button. This will open the **Settings for My Maxtor OneTouch** menu.
2. Click the **Adjust Security Setting** button.
3. In the fields provided, enter a **password** and **re-enter** your **password**. The password must be at least six or more characters in length and include at least one digit (for example "abcdef" would not be a valid password; "abcde1" would be a valid password).

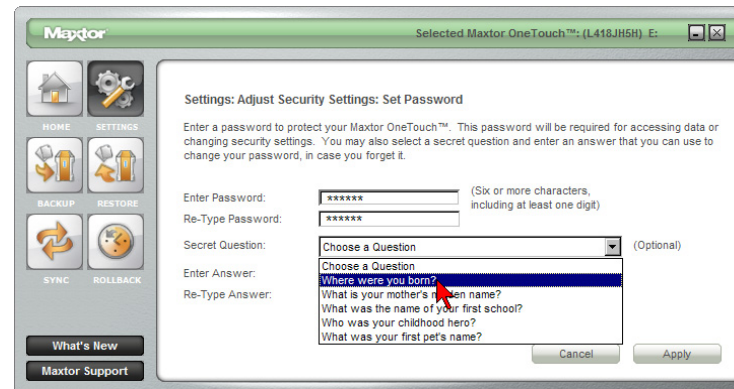


Click **Apply** if you wish to just set a password.

Optional but Recommended

You can also provide an answer to a secret question to better protect you in the advent that your password gets lost/stolen. Let's proceed.

4. Click the **Choose a Question** drop-down menu.



Select a **question**. In this case, "Where were you born?" was selected.

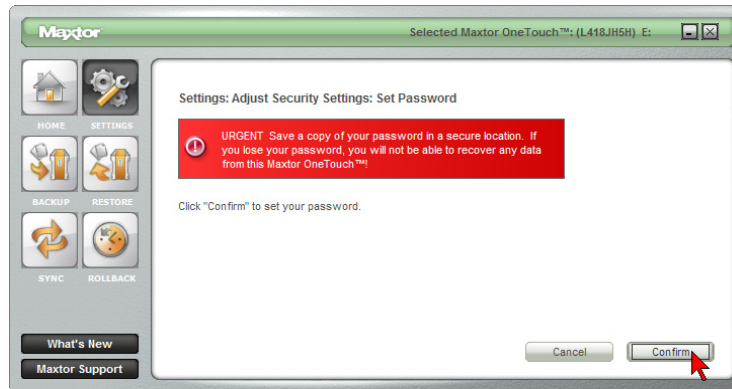
5. Enter the **Answer** to the secret question and re-type the **Answer** to the secret question.



Click **Apply**.

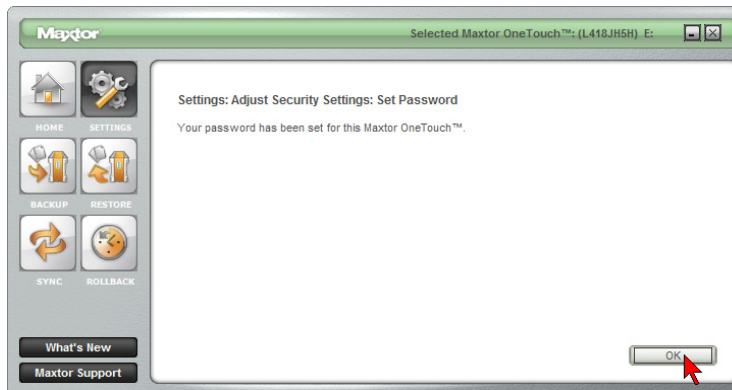
MAXTOR ONETOUCH III FIREWIRE 400/USB 2.0 WINDOWS VISTA INSTALLATION

6. You will be prompted with the following.



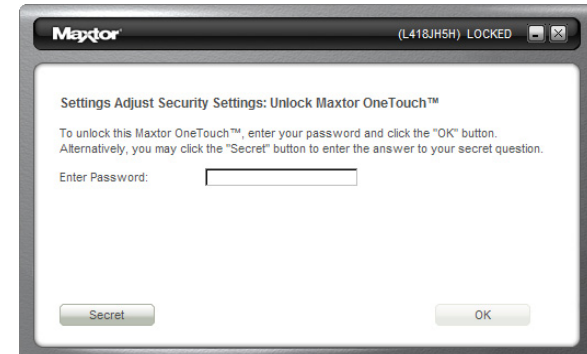
Click **Confirm**.

7. You'll be notified that a password has been set on the OneTouch III drive.



Click **OK**.

8. From now on, every time restart your PC and the OneTouch III drive is attached, or when you turn off your drive and turn it back on, you will be prompted to enter your password.



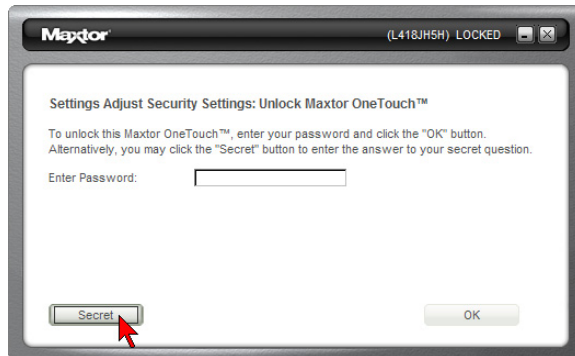
Type in your **password**.



Click **OK**,

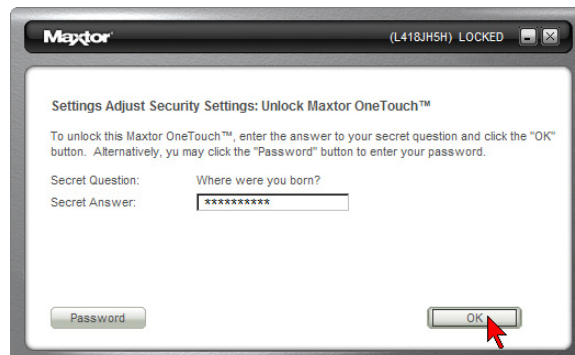
MAXTOR ONETOUCH III FIREWIRE 400/USB 2.0 WINDOWS VISTA INSTALLATION

or



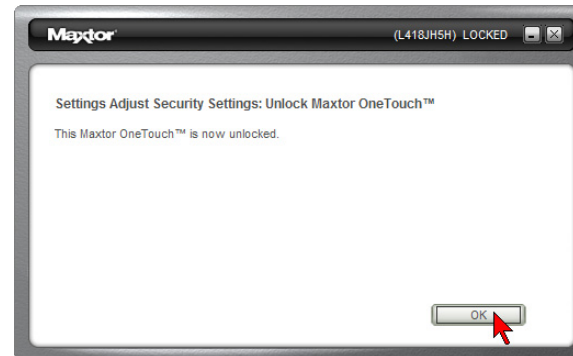
Click the **Secret** button.

Enter the **Secret Answer** to the Question.



Click **OK**.

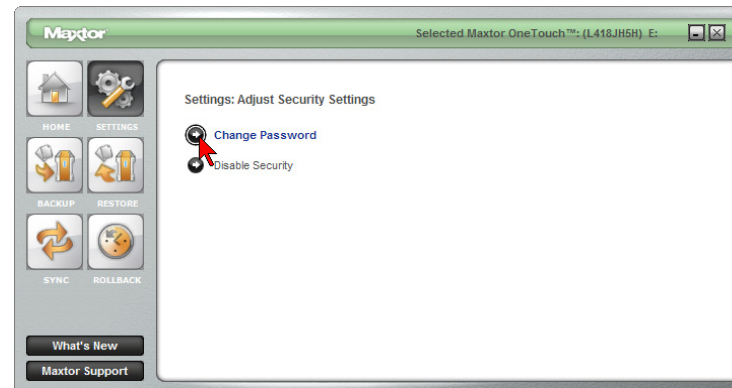
9. If the proper information is entered, you will see the following.



Click **OK** and your OneTouch III drive will be accessible.

Change Password

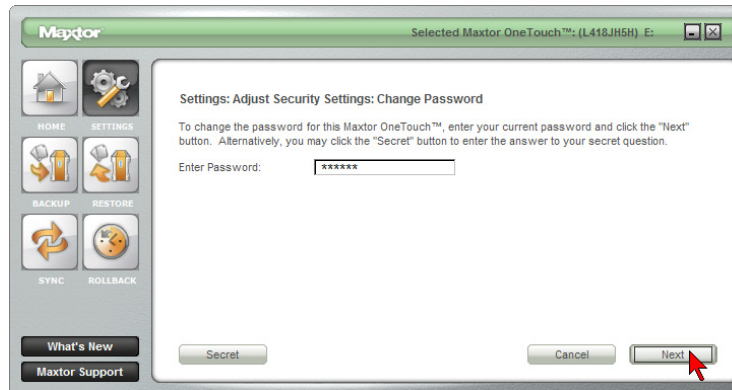
1. Click the **Settings** button. This will open the Settings for My Maxtor OneTouch menu.
2. Click the **Adjust Security Setting** button.
3. You will see the following.



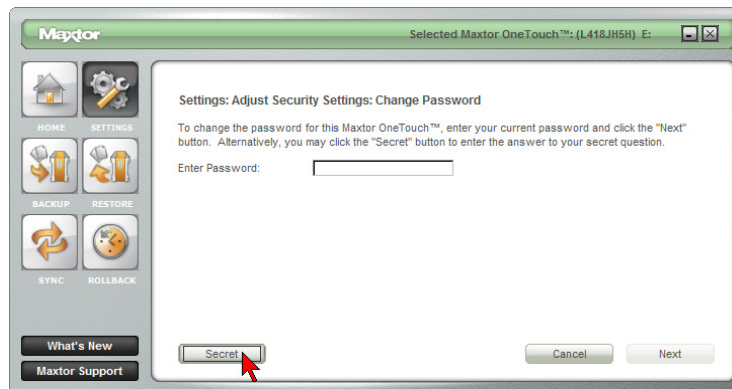
Click **Change Password**.

MAXTOR ONETOUCH III FIREWIRE 400/USB 2.0 WINDOWS VISTA INSTALLATION

4. Enter your current **Password** or click on the **Secret** button.



Click **Next**, or



Click the **Secret** button and enter the **Secret Answer** to the **Question**.



Click **Next**.

5. Create a new password following steps 3 - 7 in Set Password.

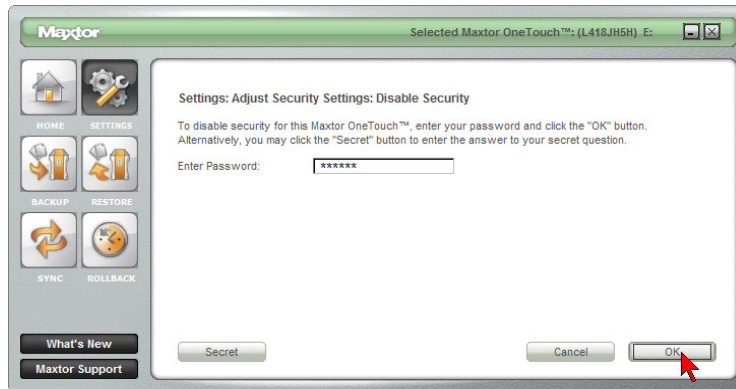
Disable Security

1. Click the **Settings** button. This will open the **Settings for My Maxtor OneTouch** menu.
2. Click the **Adjust Security Setting** button then click **Disable Security**.

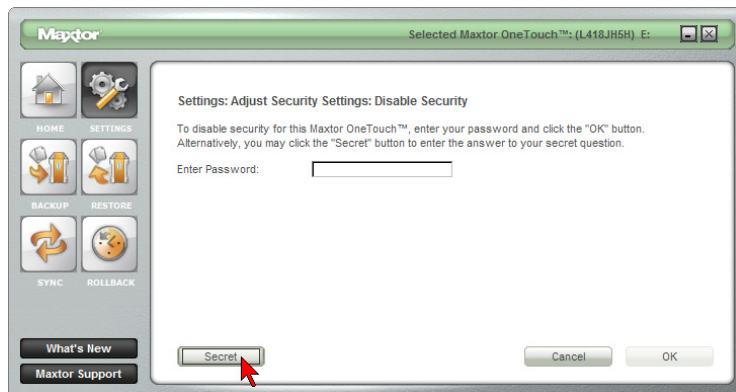


MAXTOR ONETOUCH III FIREWIRE 400/USB 2.0 WINDOWS VISTA INSTALLATION

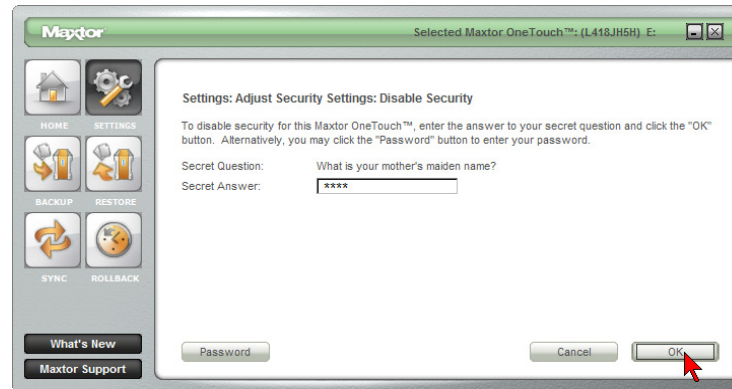
3. You will be prompted to enter your **password**.



Click **OK**, or

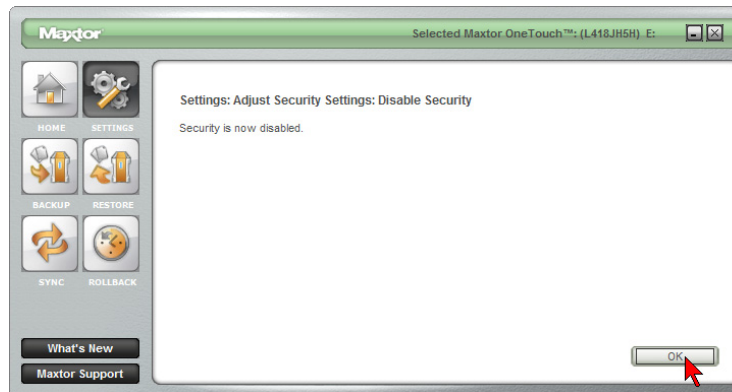


- Click the **Secret** button and **answer the secret question**.



Click **OK**.

4. You will be informed that security has been disabled on your OneTouch III drive.



Click **OK**.

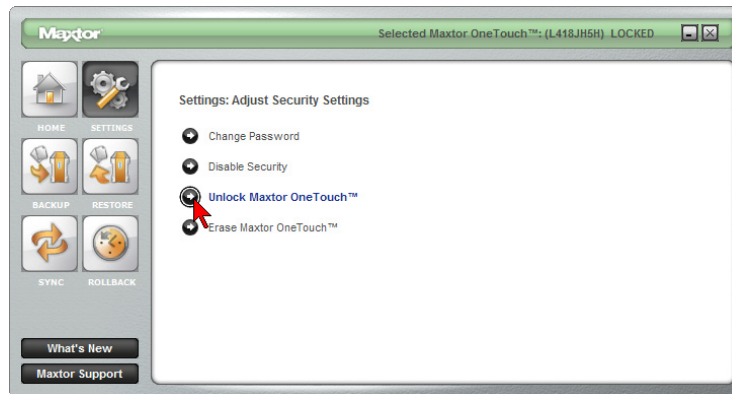
You can always re-create a password on the OneTouch III. To do this, refer to the Set Password procedure.

MAXTOR ONETOUCH III FIREWIRE 400/USB 2.0 WINDOWS VISTA INSTALLATION

Unlock Drive

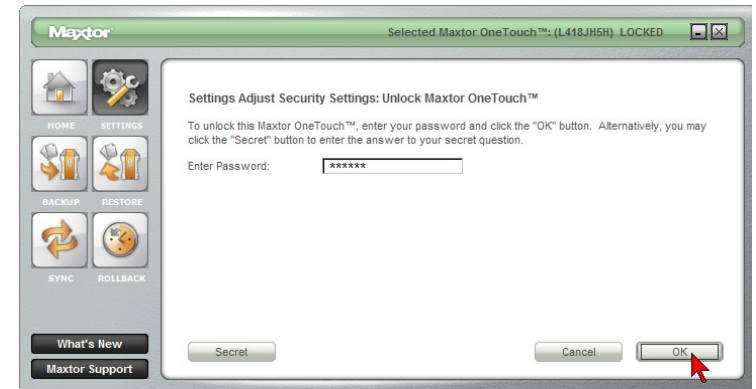
Though not widely used, the Unlock drive feature can be accessed without having to turn off you OneTouch III or restarting your PC. To use this option:

1. Click the **Settings** button. This will open the **Settings for My Maxtor OneTouch** menu.
2. Click the **Adjust Security Setting** button.
3. You will see the following.



Click **Unlock Maxtor OneTouch**.

4. You will be prompted to enter your password.

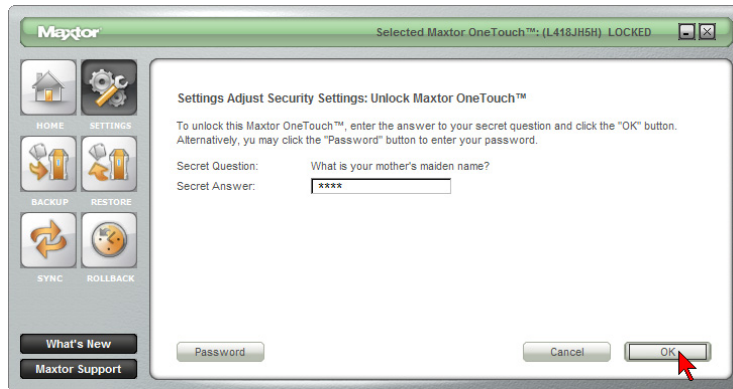


Click **OK**, or



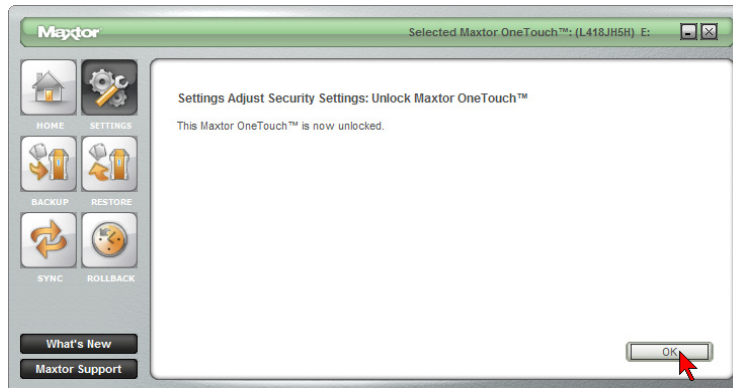
MAXTOR ONETOUCH III FIREWIRE 400/USB 2.0 WINDOWS VISTA INSTALLATION

Click the **Secret** button and answer the secret question.



Click **OK**.

5. You will be informed that your OneTouch III drive has been unlocked.

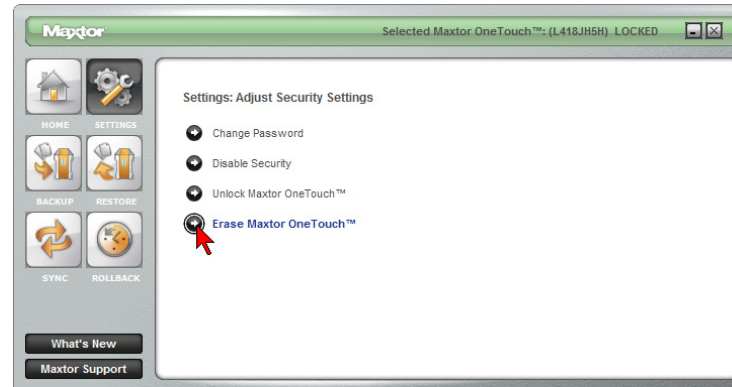


Click **OK**.

Erase Drive

If you have forgotten your password, you can attempt to re-enter it or to recover it, by answering a question that you setup originally when you created your password. You are allowed 5 attempts before you must turn off your drive and turn it back on, to try again at which point you can try an additional 5 times. If you are not able to recover your password, the only other way to unlock the drive is to erase all of its contents.

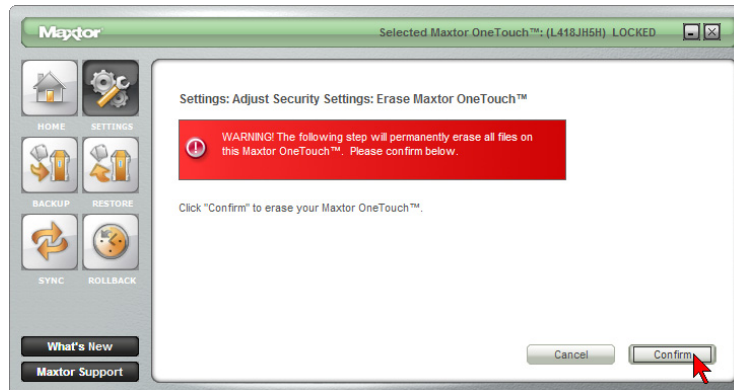
1. Click the **Settings** button. This will open the **Settings for My Maxtor OneTouch** menu.
2. Click the **Adjust Security Setting** button.
3. You will see the following.



Click **Erase Maxtor OneTouch**.

MAXTOR ONETOUCH III FIREWIRE 400/USB 2.0 WINDOWS VISTA INSTALLATION

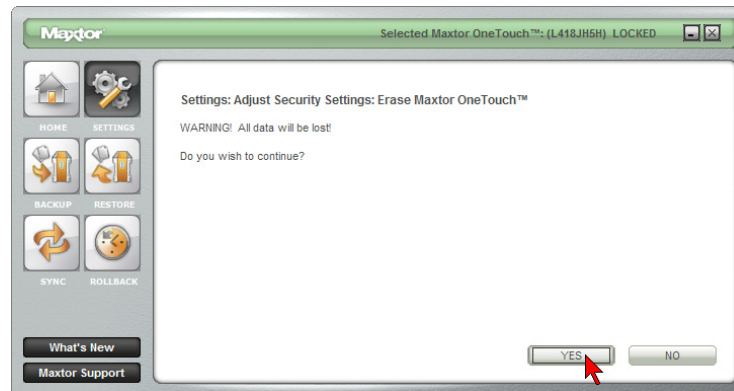
4. You will see the following warning.



WARNING: The Erase Drive feature is Data Destructive!

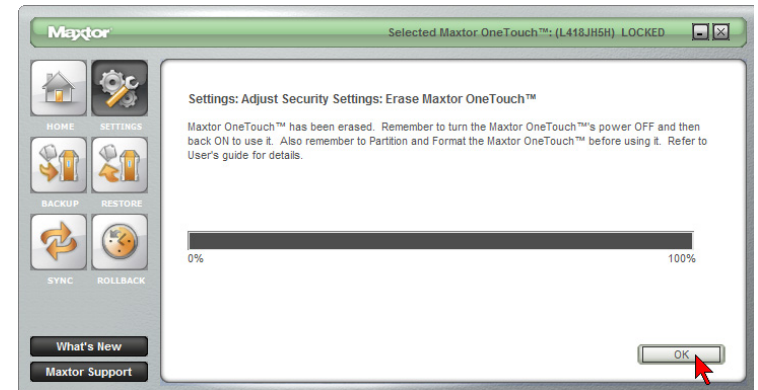
Click **Confirm** to proceed.

5. You will be prompted with the following.



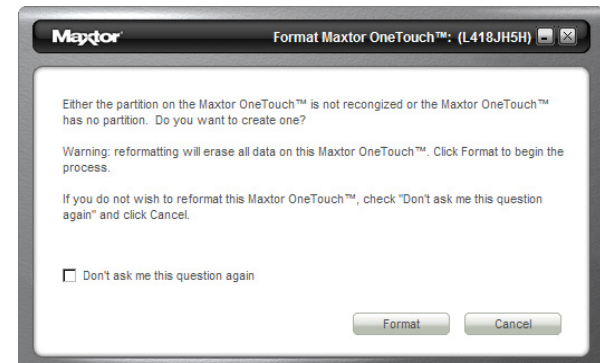
Click **Yes** to start the **Erase** process. **NOTE:** This process can take up to 3 hours to complete.

6. When finished you will be notified that the drive is erased.



Click **OK**.

7. Power-cycle your OneTouch III. Upon doing so, you will be prompted to Format the drive.



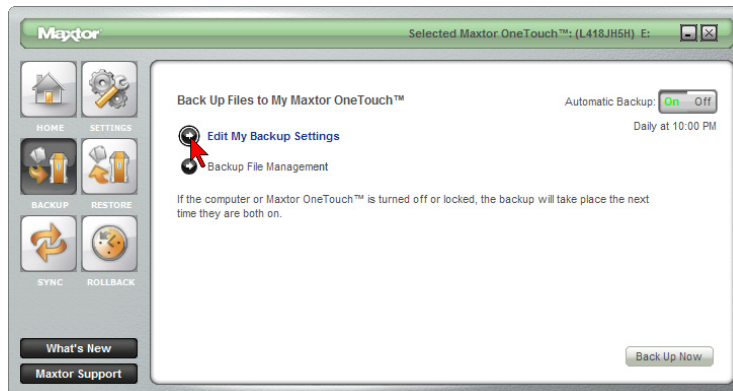
MAXTOR ONETOUCH III FIREWIRE 400/USB 2.0 WINDOWS VISTA INSTALLATION

Backup

While setting up the OneTouch III, you learned how to configure a backup using the Maxtor Backup Utility. In this section, we will look at the other features of this program.

To Edit Backup Settings

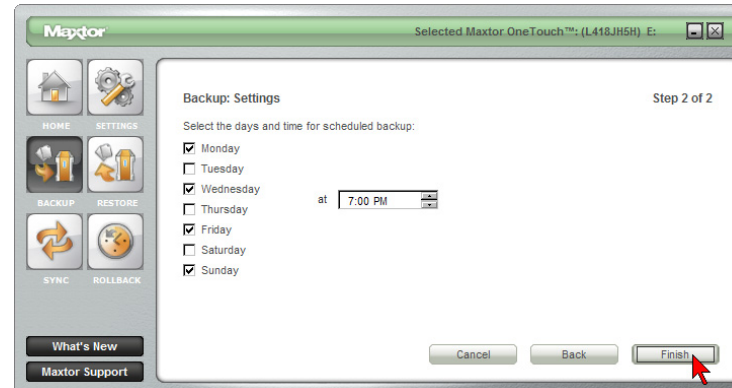
1. From the EasyManage main window, click the **Backup** button.



2. Click **Edit My Backup Settings**.

Step 1 of 2: Select and/or deselect the files/folders that you wish to back up [see Steps 1 of 2 and 2 of 2 above]

Step 2 of 2: Click on the checkboxes to deselect the days that you do not wish the backup to run; change the time that you wish the backup to run.

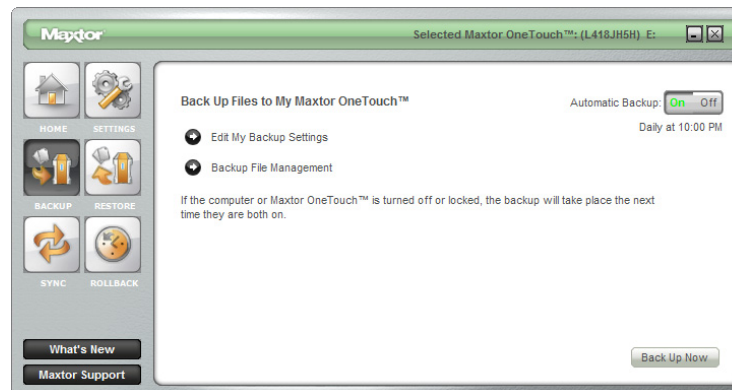


Click **Finish**.

You will be returned to the **Backup Settings** window.

Automatic Backups

By default, the Backup feature will perform a backup of your selected files at 10:00 pm daily,

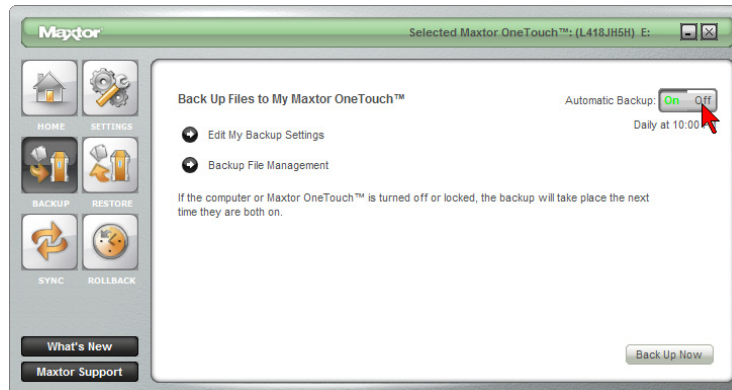


or at the time and on the days that you selected when you edited the backup schedule.

MAXTOR ONETOUCH III FIREWIRE 400/USB 2.0 WINDOWS VISTA INSTALLATION

To Disable (Turn Off) Scheduled Backups

1. From the EasyManage main window, click on the **Backup** button.
2. Click the **Off** button to turn off scheduled backups.



NOTE: If Automatic Backups is turned Off, you will be able to launch backups manually:

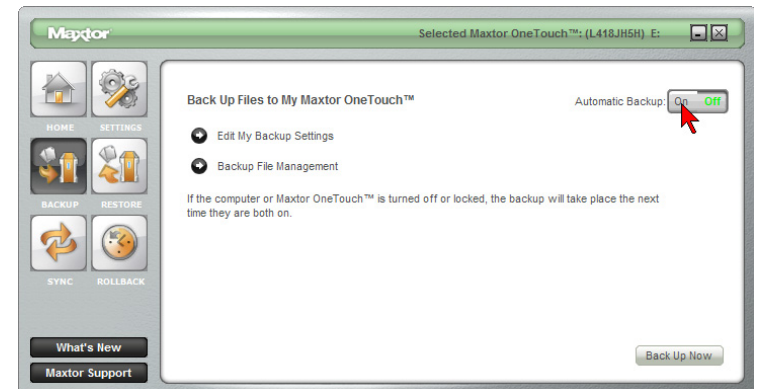
By pressing the **OneTouch** button – provided it is customized to the OneTouch button, or by launching the **Maxtor EasyManage** → **Backup** → **Back Up Now**.

To Re-enable (Turn On) Scheduled Backups

To Edit Backup Settings

From the EasyManage main window, click the **Backup** button.

Click the **On** button to return to scheduled backups.



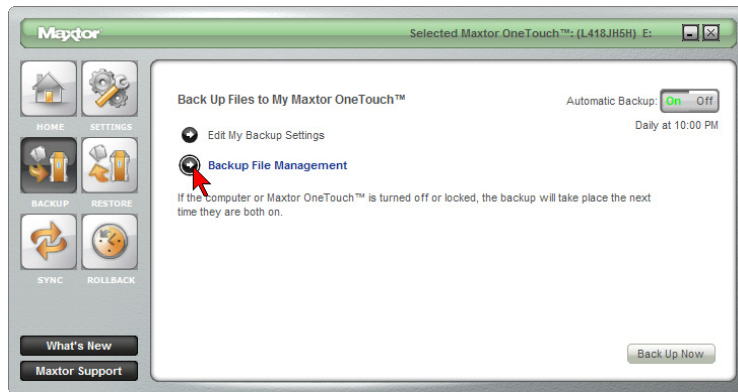
MAXTOR ONETOUCH III FIREWIRE 400/USB 2.0 WINDOWS VISTA INSTALLATION

Backup File Management

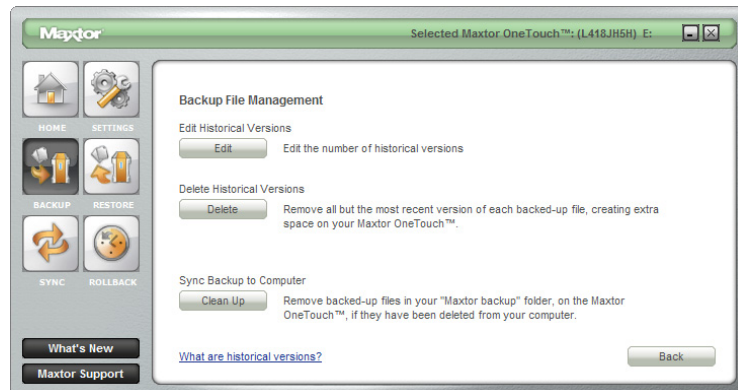
This option will do the following:

- Edit the number of historical file versions saved to your OneTouch III,
- Delete historical versions from your OneTouch III, and
- Sync Backup to Computer.

From the EasyManage main window, click on the **Backup** button.



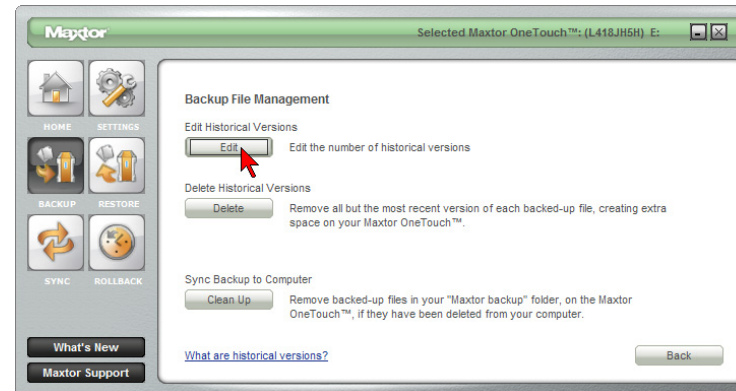
Click **Backup File Management**. You will see the following:



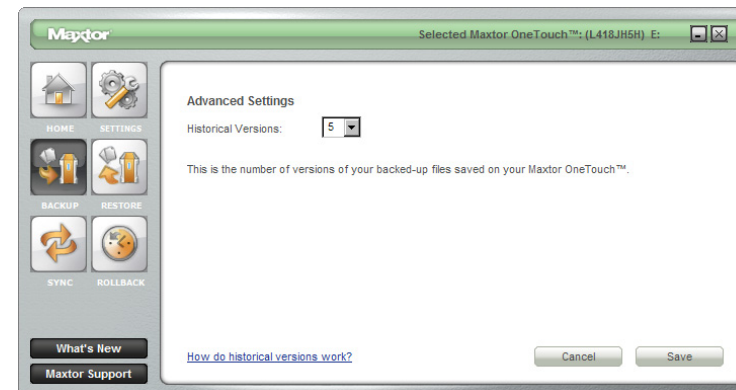
Edit Historical Versions

When you back up your files, you have the option to store previous, or “historical,” versions of each file. You can then restore any historical version based on the date when it was backed up. By default, Maxtor EasyManage will save five (5) historical file versions of each revised file stored to the OneTouch III.

To change this setting:

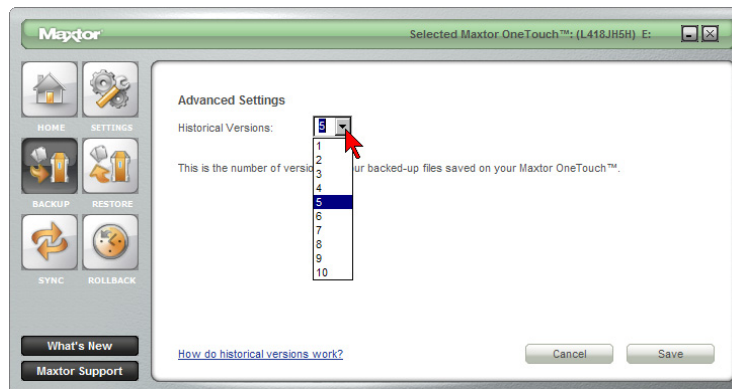


Click **Edit**. You will see the following:

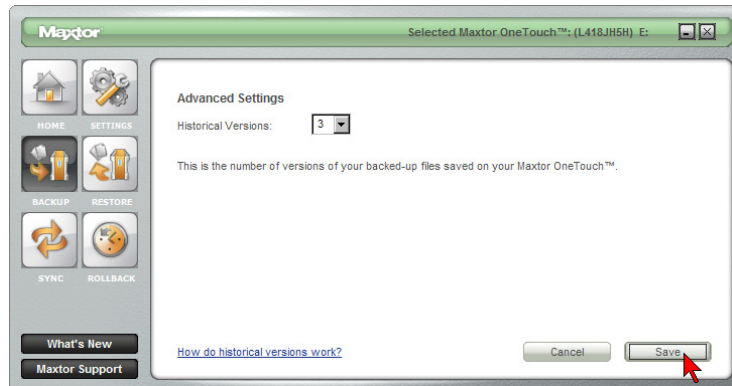


MAXTOR ONETOUCH III FIREWIRE 400/USB 2.0 WINDOWS VISTA INSTALLATION

Select the drop-down menu.



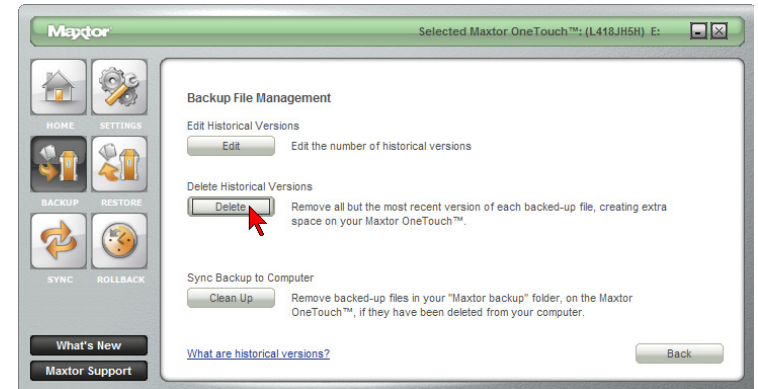
Select the number of historical file versions you wish to save to you backup this can be a number between 1-10.



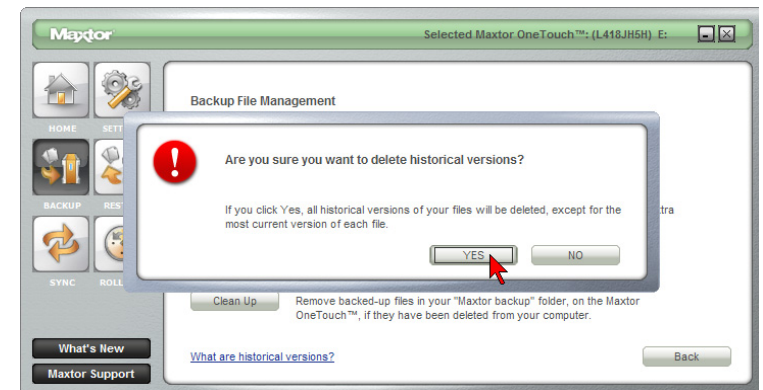
Click **Save**. You will return to the **Backup File Management** menu.

Delete Historical Versions

Deletes all but the most current version of each file in your “My Backup” folder. This can help create extra storage space if you have numerous backup files.

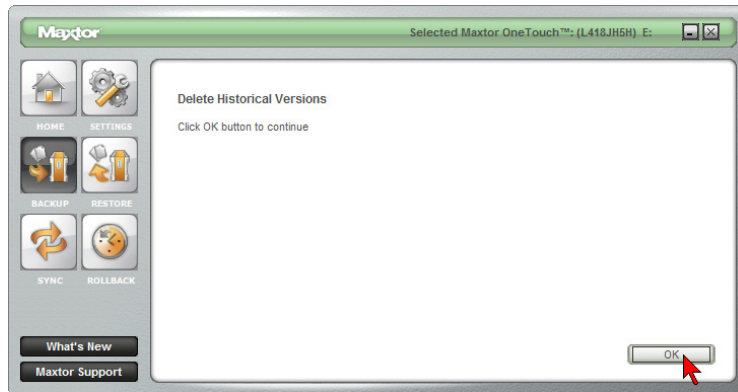


Click **Delete**. You will be prompted with the following.



MAXTOR ONETOUCH III FIREWIRE 400/USB 2.0 WINDOWS VISTA INSTALLATION

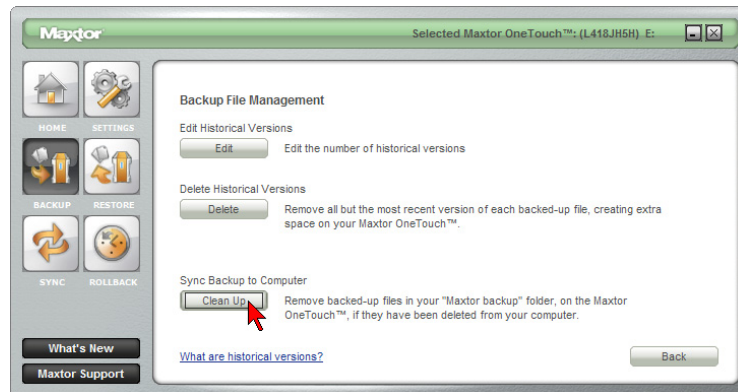
Click **Yes** to delete historical versions from the OneTouch III.



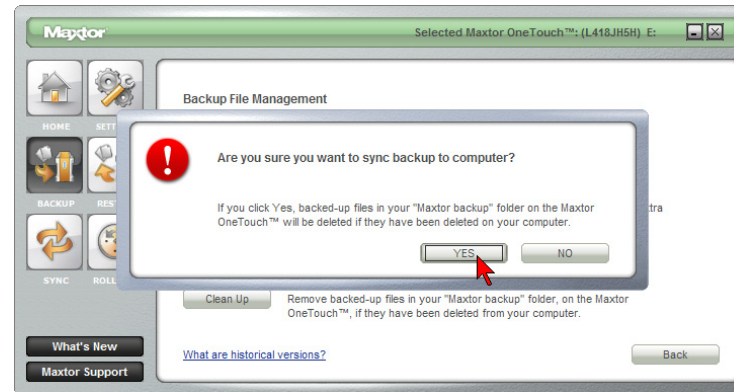
Click **OK** to return to the **Backup File Management** menu.

Sync Backup to Computer

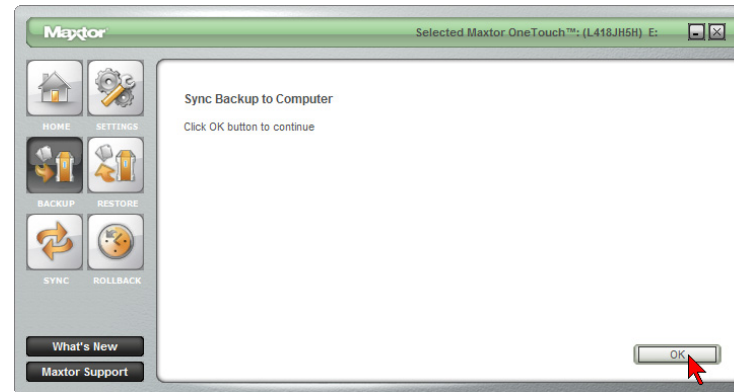
Deletes files in your "My Backup" folder if they no longer exist on your computer. This can also help create extra storage space.



Click **Clean Up**. You will be prompted with the following.



Click **Yes** to delete files from the OneTouch III drive.



Click **OK** to return to the **Backup File Management** menu.

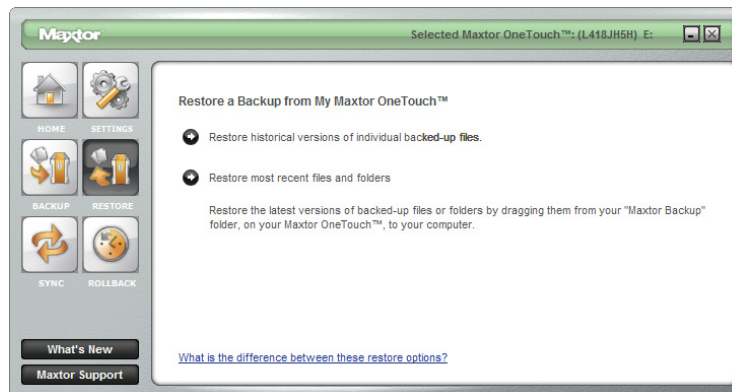
MAXTOR ONETOUCH III FIREWIRE 400/USB 2.0 WINDOWS VISTA INSTALLATION

Restore

The Maxtor EasyManage Restore option provides you with a simple way to restore files and folders back to your PC in the event of data corruption or system failure.

From the EasyManage main window, click on the **Restore** button.

This will launch the **Restore a Backup from My Maxtor OneTouch** window. You have two options:



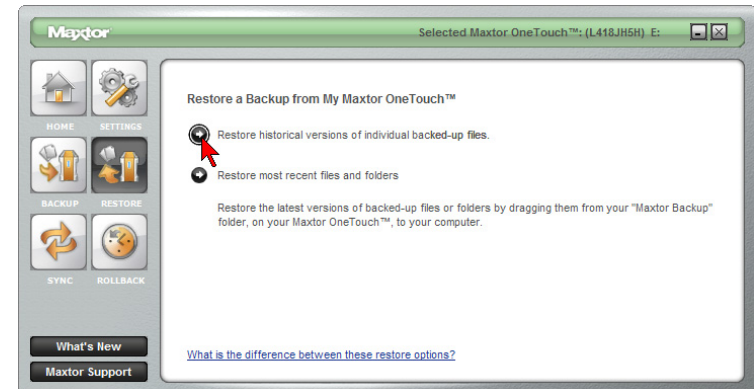
Restore a Previous File Version (default option) - Choosing this option allows you to restore an individual historical version of a file, based on the date it was backed up. By default, 5 historical versions of each file are stored.

or

Restore Most Recent Files and Folders - Choosing this option will open the "My Backup" folder on your OneTouch III, and allow you to restore multiple files and folders by clicking and dragging them to wherever you want to put them.

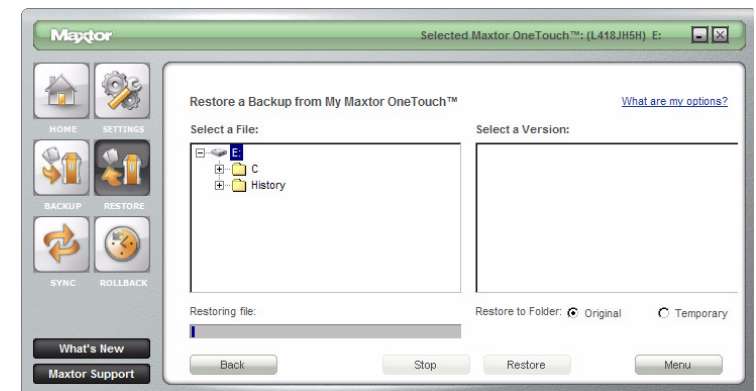
To Restore a Previous File Version

Click on **Restore** historical versions of individual backed-up files.



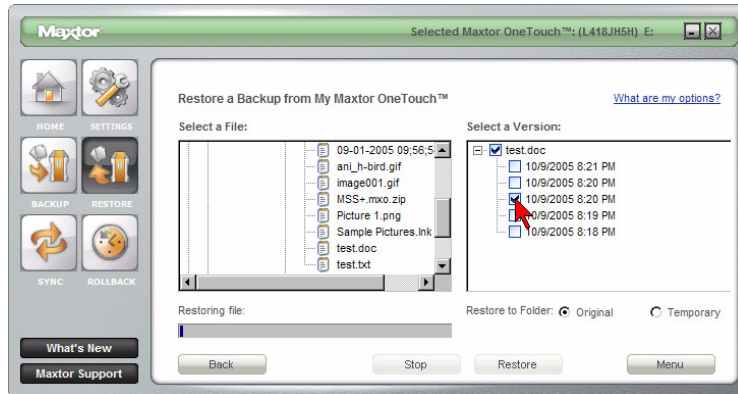
The **Restore Files** window will appear. All backed up files/folders will appear in the left.

Select a **File** column. This process may take awhile to populate.



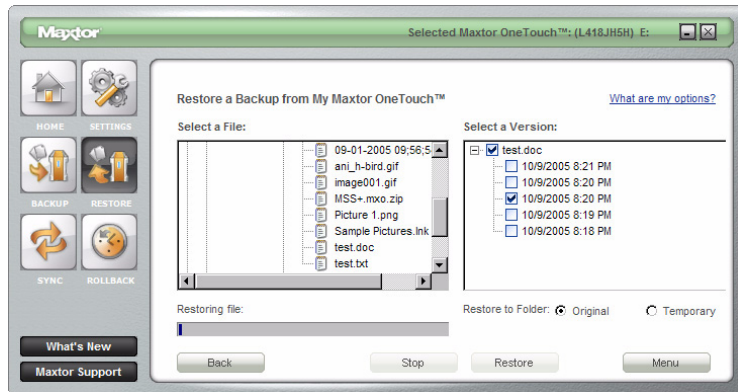
MAXTOR ONETOUCH III FIREWIRE 400/USB 2.0 WINDOWS VISTA INSTALLATION

Once populated, use the scroll bar to **Select a Version** of the file and where you want to restore the file to:



To Restore to the Original (default) Folder

Click the **Original** button. This restores a file to its original folder on your computer.



Click **Restore**.

If prompted, click **Replace**. The Historic Version of the file is then copied to your computer from the OneTouch III.

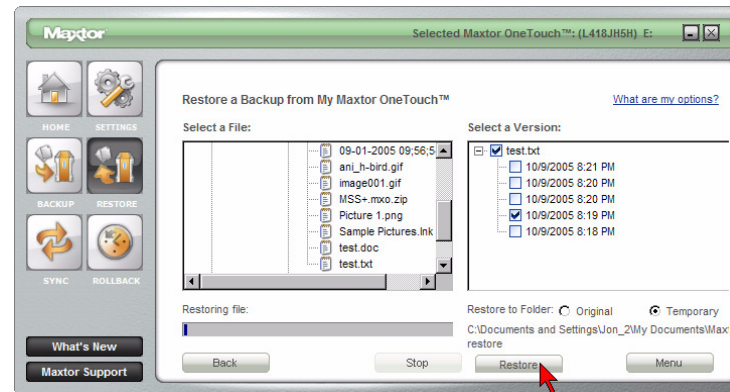
or

To Restore to the Temporary Folder - Restores file to the following folder:

C:\Users\YourUserName\Documents\Maxtor Restore

NOTE: "YourUserName" is your Account Name.

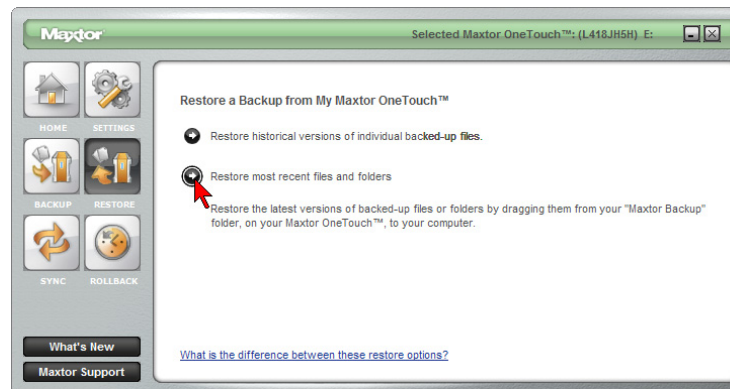
Click the **Temporary** button.



Click **Restore**. At this point, the select file will be copied to the *C:\Users\YourUserName\Documents\Maxtor Restore* folder on your PC.

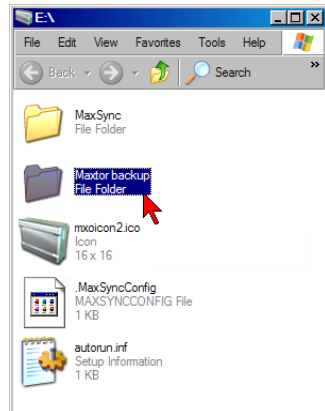
To Restore Most Recent Files and Folders:

Click the **Restore most recent files and folders** button.

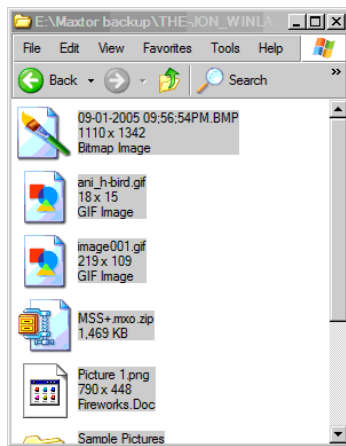


MAXTOR ONETOUCH III FIREWIRE 400/USB 2.0 WINDOWS VISTA INSTALLATION

This will launch a window showing the root directory structure of the Maxtor backup folder on the OneTouch III.



Browse the directory and locate files/folders you wish to restore.



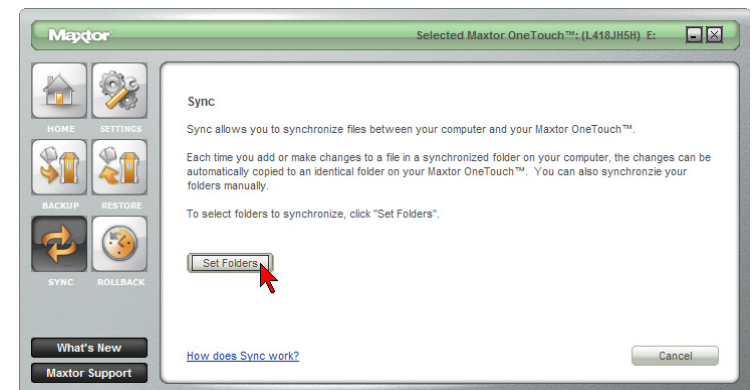
To restore files, simply drag and drop (cut/copy and paste) files/folder from the OneTouch III to your computer.

Sync

How does Sync work?

You may select one or more folders on your computer to sync to your OneTouch. Whenever a file changes in one of the folders on your computer, it can be automatically copied to an identical folder on your OneTouch. You may select folders on one local disk (C: or D: for example) and any folders within your My Documents folder. You can sync folders between multiple computers. This makes it convenient for you to move files between a computer at work and a computer at home.

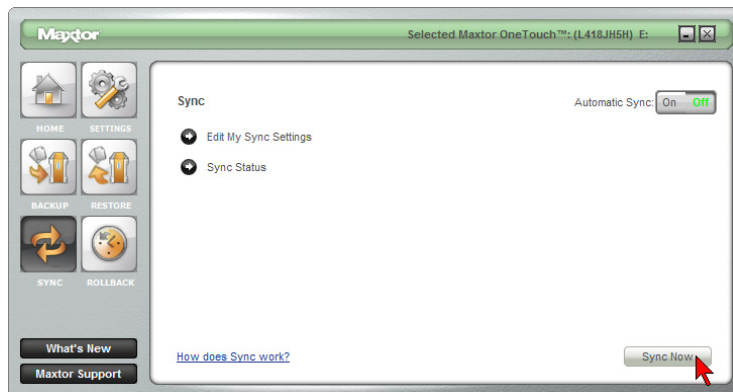
Click the **Sync** button. You will see the following.



Click **Set Folders**. Check the folders that you wish to sync between your PC and the OneTouch III.

MAXTOR ONETOUCH III FIREWIRE 400/USB 2.0 WINDOWS VISTA INSTALLATION

Click **Apply**. The following will appear.

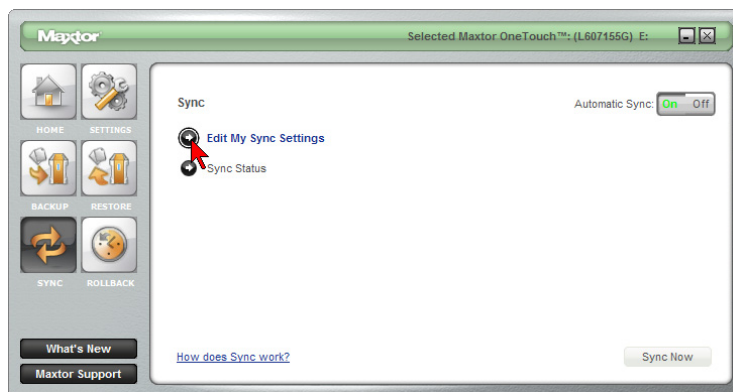


Click **Sync Now**.

Your selected folders will then synchronize to the OneTouch III.

To Edit Sync Settings

Click the **Sync** button. You will see the following.

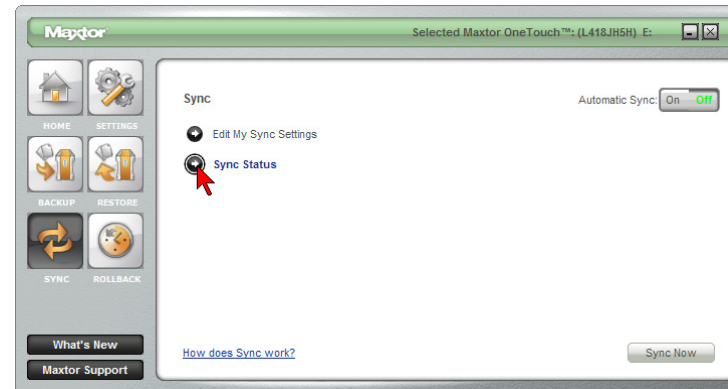


Click on **Edit My Sync Settings**. Select folders that you wish to **Sync** with your OneTouch III.

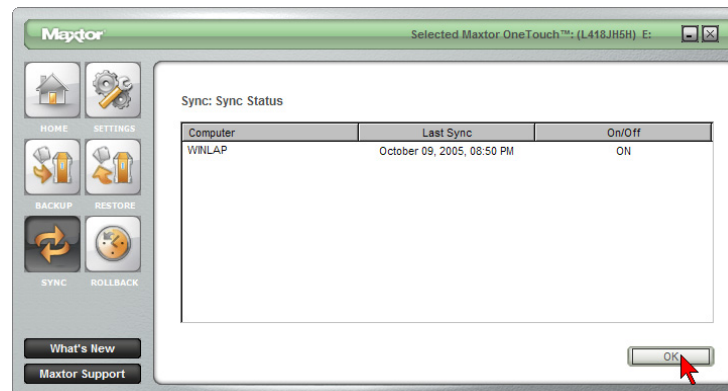
Click **Apply**.

Checking the Status of your Sync

Click the **Sync** button. You will see the following.



Click **Sync Status**. The status of your last Sync will display.



Click **OK**.

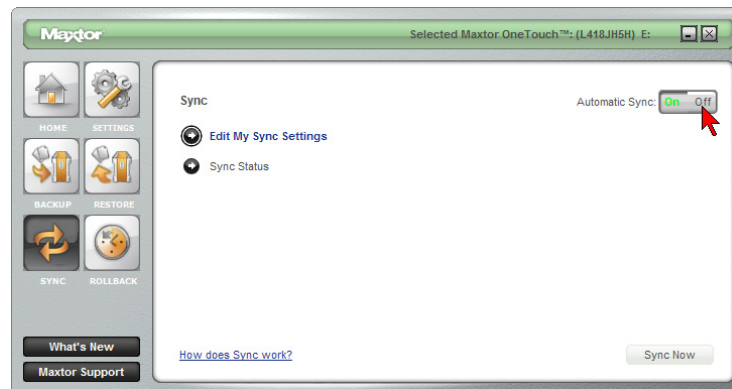
MAXTOR ONETOUCH III FIREWIRE 400/USB 2.0 WINDOWS VISTA INSTALLATION

Automatic Sync

The Automatic Sync feature can be turned on or off. By default, this setting is **On**.

To Turn Automatic Sync Off

Click the **Sync** button. Click the **Off** button in the upper, right corner of the Sync screen.



Automatic Sync is now **Off**.

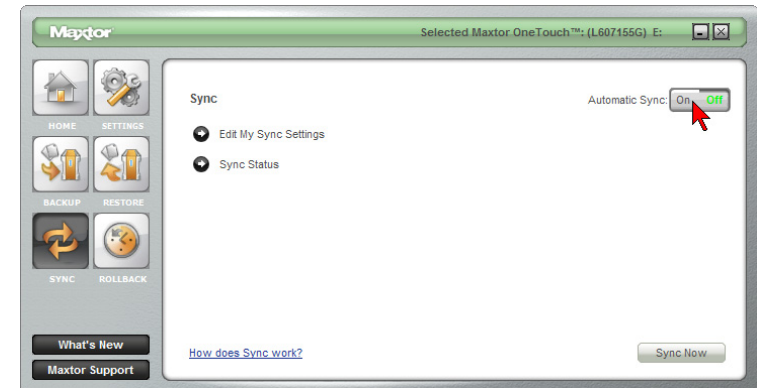
NOTE: If **Automatic Sync** is turned **Off**, you will can launch backups manually:

By pressing the OneTouch button – if Sync is customized to the OneTouch button, or

By launching the **Maxtor EasyManage** → **Sync** → **Sync Now**.

To Turn Automatic Sync On

Click the **On** button located in the upper right corner of the Sync screen.



Automatic Sync is now **On**.

To Sync Files Between Multiple PCs

1. Sync your files from your original computer to your OneTouch.
2. Disconnect your OneTouch.
3. Connect your OneTouch to the destination computer. The Sync Settings screen will appear.
4. Select the local disk on the destination computer to store the synchronized folders from your OneTouch.

Every time you move your OneTouch between computers, Sync will automatically compare the folders on your OneTouch to the ones on your computer to look for files that have changed. If any files have changed, it will ask you if you would like to replace the older files with their newer versions.

MAXTOR ONETOUCH III FIREWIRE 400/USB 2.0 WINDOWS VISTA INSTALLATION

To Manually Sync Folders

There are two ways to do this:

Using the Sync screen

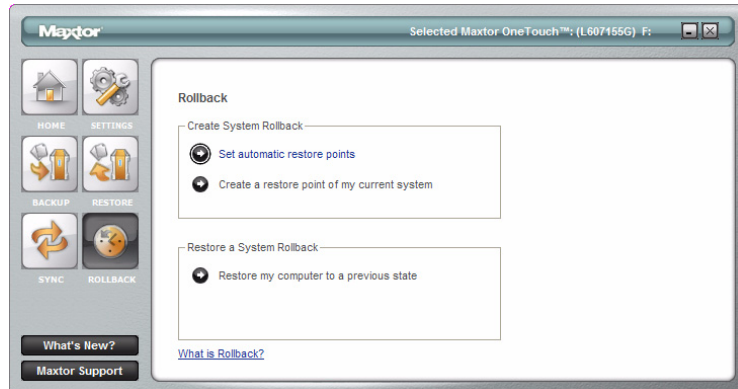
1. Click the **Sync** button.
2. Click **Sync Now**.

or

Press the **OneTouch** button.

Rollback

Click the **Rollback** button. You will see the following:



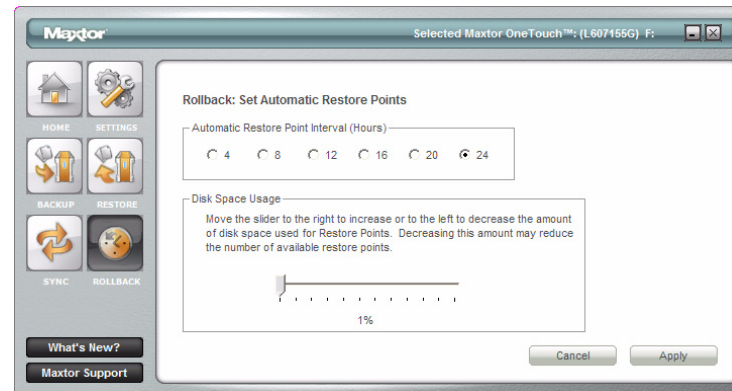
You can use rollback to undo changes to your computer and restore its software and settings to a previous state, based on a date in the past called a “Restore Point.” Think of a restore point as a snapshot of your system.

It's good to create a restore point if you are about to make a major change to your system, like installing new software or making major changes to your computer's settings.

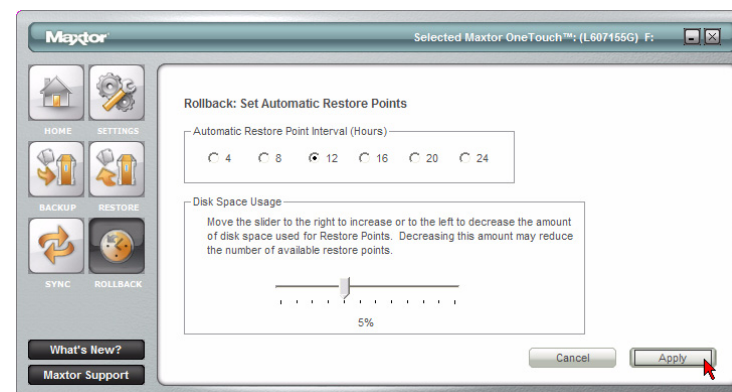
Rolling your computer back to a previous restore point will not cause you to lose any of your current work, like documents, email or web browser bookmarks.

Set Automatic Restore Points

Click **Set automatic restore points**. You will see the following.



Select an **Automatic Restore Point Interval** (by default the interval is 24 hours). Move the slider to select the amount of disk space used on the OneTouch III for available restore points (by default, the value is 12%).



Click **Apply**.

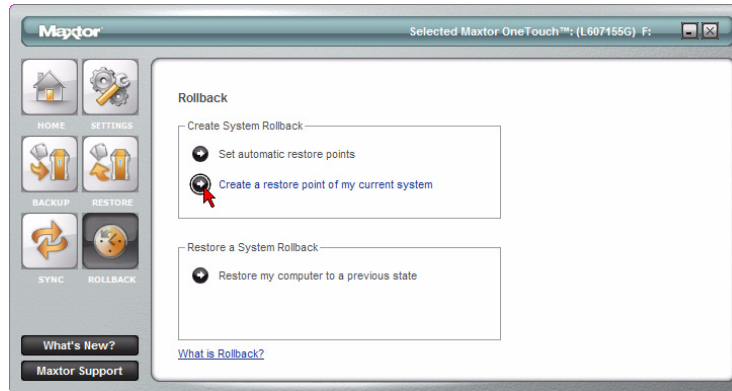
NOTE: Decreasing the percentage of disk space used may reduce the number of available restore points.

MAXTOR ONETOUCH III FIREWIRE 400/USB 2.0 WINDOWS VISTA INSTALLATION

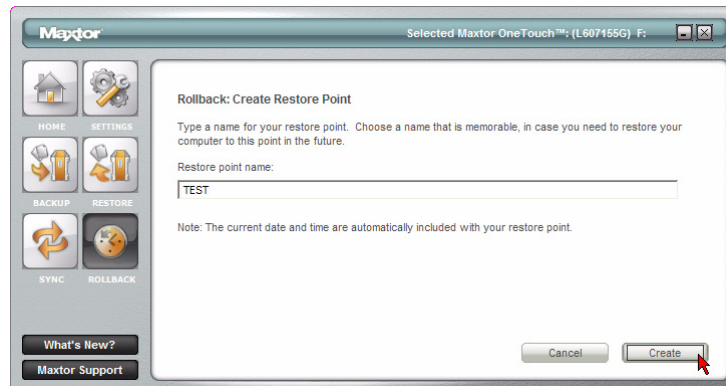
Creating a Restore Point

You may either create a restore point manually or set a regular time for a restore point to be created automatically (see Set automatic restore points). To manually create a restore point:

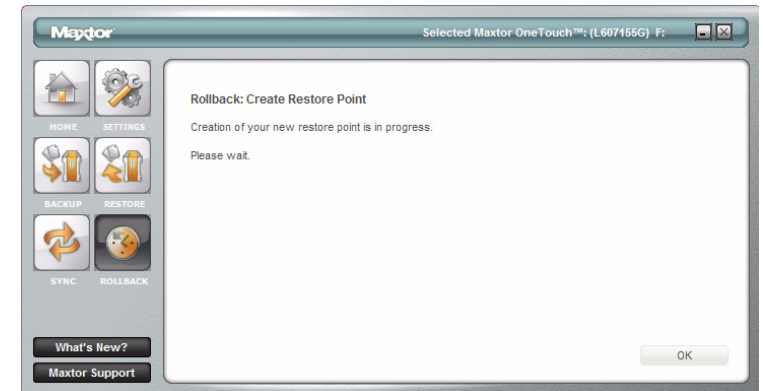
From EasyManage, click the **Rollback** button.



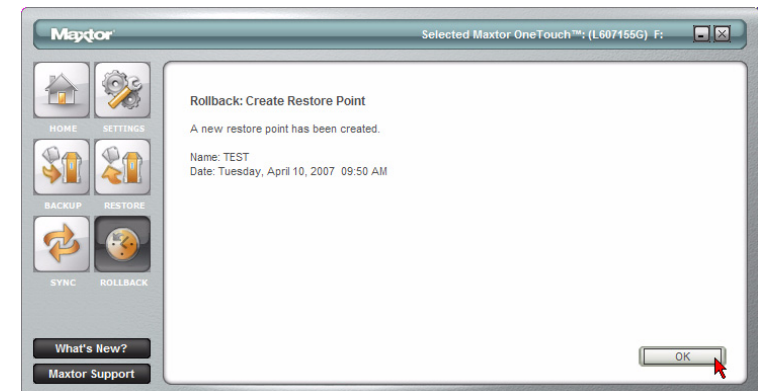
Click **Create a restore point of my current system**. The **Rollback: Create Restore Point** window is displayed. In the field provided, enter a name for your restore point.



Click **Create**. A window displays that the **Creation of your restore point is in progress**.



When finished, you will be notified that the restore point has been created.



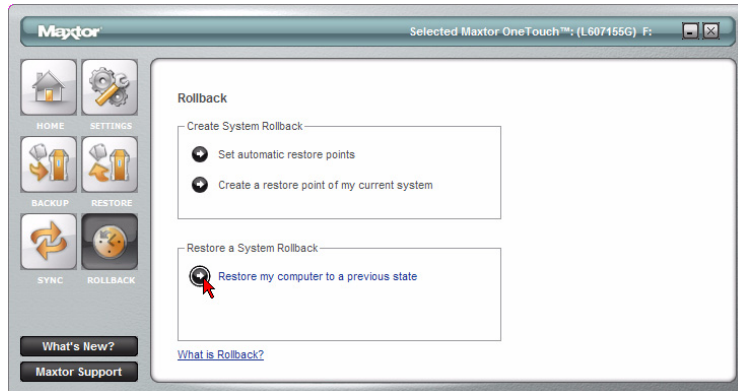
Click **OK** to return to the **Rollback** menu.

MAXTOR ONETOUCH III FIREWIRE 400/USB 2.0 WINDOWS VISTA INSTALLATION

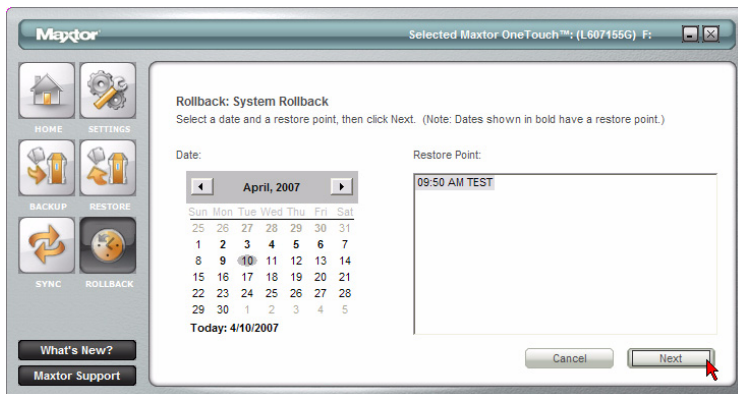
Rolling Back Your System

You may select a date in the past and a restore point to restore.

From EasyManage, click the Rollback button.

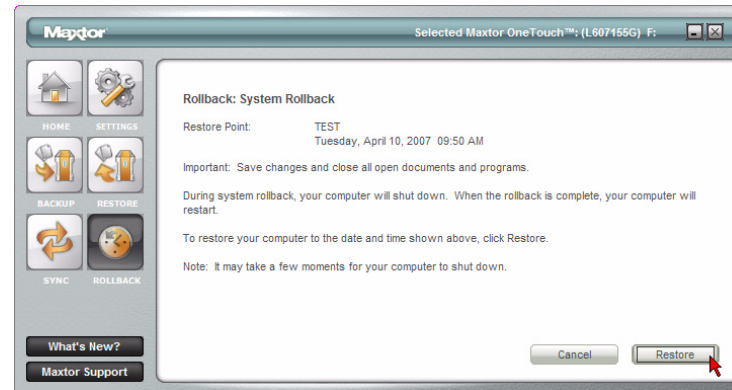


Click **Restore my computer to a previous state**. Select a date and a restore point.



Click **Next**. A Rollback screen will display the selected restore point.

NOTE: Save all files and close all open programs (other than EasyManage) before continuing.



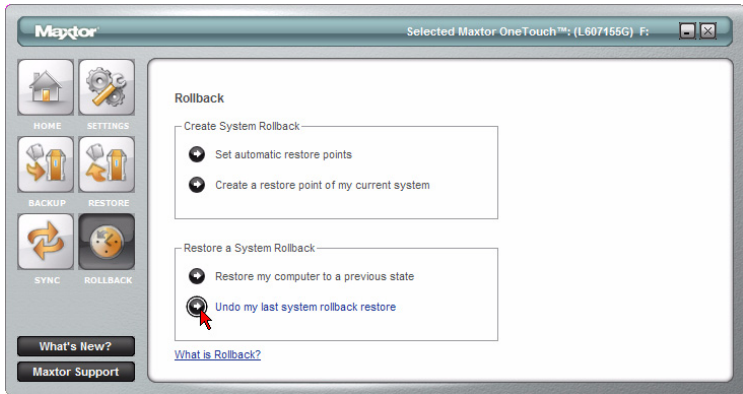
Click **Restore**. During the rollback process, your computer will shut down. When your computer reboots, the rollback will be complete.

MAXTOR ONETOUCH III FIREWIRE 400/USB 2.0 WINDOWS VISTA INSTALLATION

Undoing a System Rollback

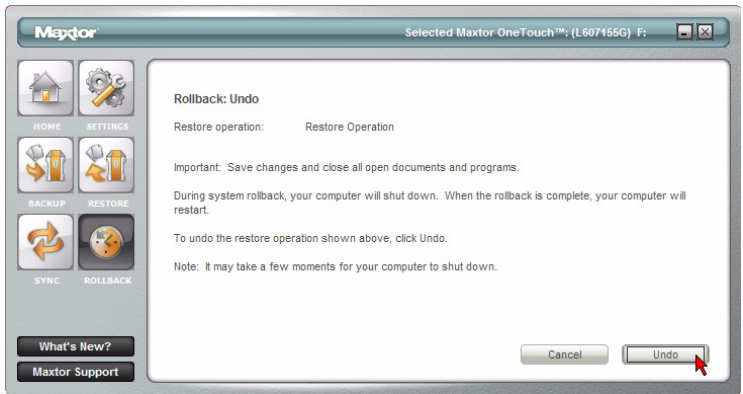
If, after you roll back your system, you decide that you want to go back to your previous system state, you may undo the rollback you just completed.

From EasyManage, click on the Rollback button.



Click **Undo my last system rollback system restore**. A **Rollback: Undo** screen will display.

NOTE: Save all files and close all open programs (other than EasyManage) before continuing.



Click **Undo**.

During the rollback-undo process, your computer will shut down. When your computer reboots, the rollback will be complete and your system will return to its previous state prior to your last rollback.






OneTouch III Status Icons

The OneTouch Status Icon(s) are located in the Windows System Tray – located near the clock on your desktop.

The Status Icon can do the following

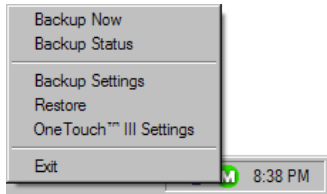
- Report OneTouch III connection and or the status of the last backup
- Be used for accessing certain EasyManage features

ONETOUCH STATUS ICONS

Icon	Meaning
	No OneTouch III Drive is connected.
	Last backup completed successfully.
	Last backup completed with errors.
	Last backup failed.
	Backup needs to be configured.

Using the Status Icon to Access EasyManage Features

Click the **Status Icon**. You will see the following menu:

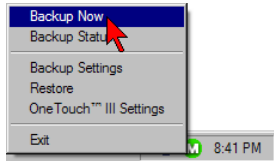


Let's take a look at these options.

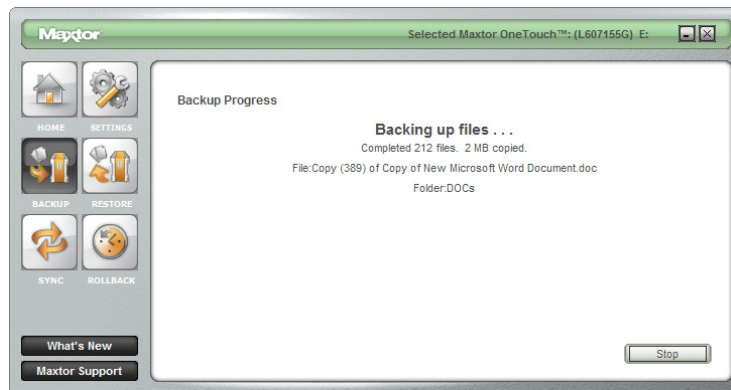
MAXTOR ONETOUCH III FIREWIRE 400/USB 2.0 WINDOWS VISTA INSTALLATION

Backup Now

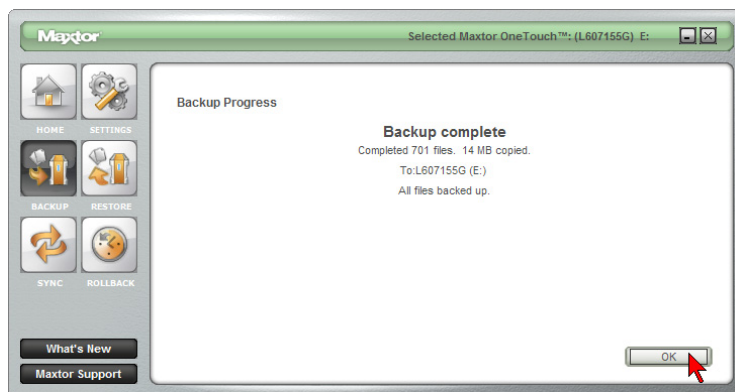
When selected, you will start an immediate backup of files/folders selected through the EasyManage Backup feature.



Click **Backup Now**. You will see the following.



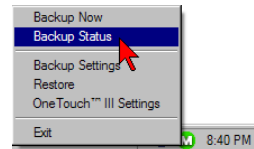
When complete,



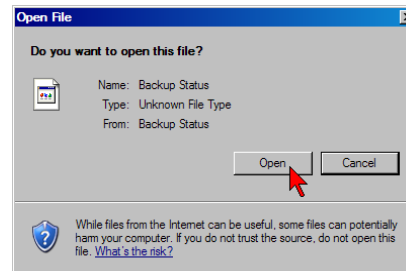
click **OK** to close the window.

Backup Status

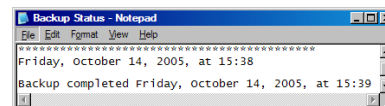
When selected, this will open a text based report of your backup history.



Click **Backup Status**. You will see the following:



Click **Open** to launch a text file showing the history of your system backups.

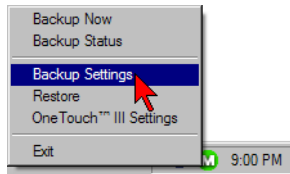


When finished, save the text file to your system. It may be handy if future troubleshooting is required.

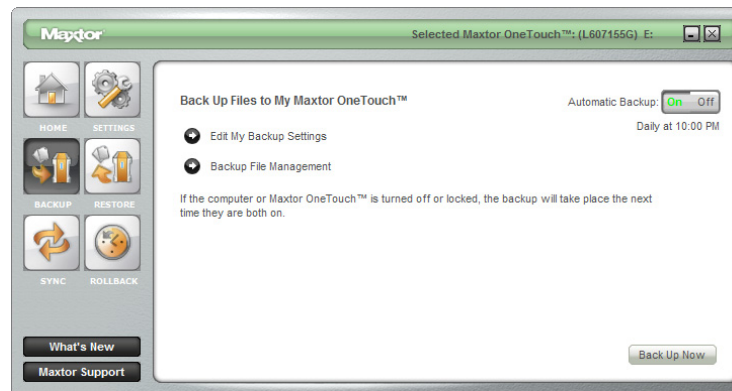
MAXTOR ONETOUCH III FIREWIRE 400/USB 2.0 WINDOWS VISTA INSTALLATION

Backup Settings

When selected, this will open the EasyManage Backup feature to the Back Up Files to My Maxtor OneTouch menu.



Click **Backup Settings**. You will see the following.

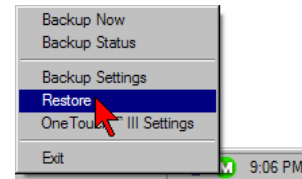


From this window, you can:

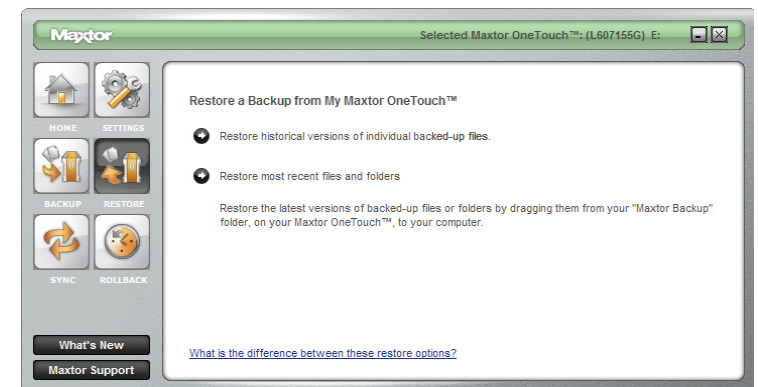
- Edit Backup Settings
- Manage File Backups
- Launch an immediate File Backup
- Toggle Automatic Backups

Restore

When selected, this will open the EasyManage Restore feature to the Restore a Backup from My Maxtor OneTouch menu.



Click **Restore**. You will see the following:



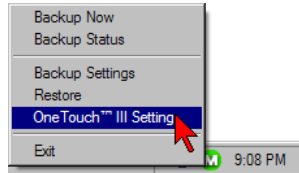
From this window, you can:

- Restore historical versions of individual backed-up files
- Restore most recent files and folders

MAXTOR ONETOUCH III FIREWIRE 400/USB 2.0 WINDOWS VISTA INSTALLATION

OneTouch III Settings

When selected, this option will launch the Settings for My Maxtor OneTouch menu.



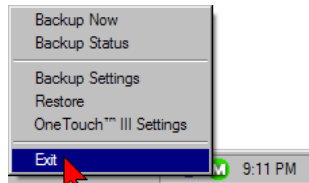
Click **OneTouch III Settings**.

From this menu you can:

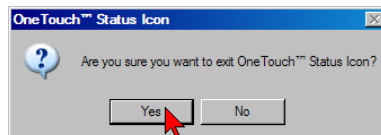
- Adjust the Power Setting
- Customize the OneTouch button
- Set Password Security

Exit

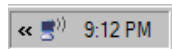
When selected, this option will exit the OneTouch Status and remove the Status icon from the System Tray.



Click **Exit**. You will be prompted with the following:



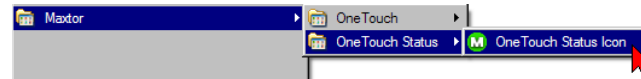
Click **Yes** to close the **OneTouch Status**.



The Status icon is removed from the System Tray and the OneTouch Status utility is closed.

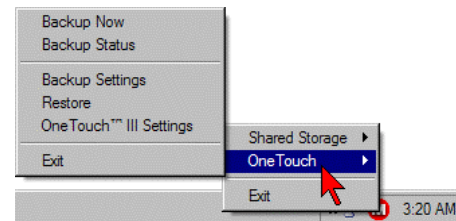
How to Re-launch OneTouch Status

The Maxtor OneTouch Status will automatically launch upon system restart. However, you can manually launch it without having to reboot your PC. To do this, click **Start → All Programs → Maxtor → OneTouch Status → OneTouch Status icon**.



Important Note: For users of the Maxtor Shared Storage Plus Quick Start Software

Both the Maxtor EasyManage and the Quick Start software packages utilize the same status icons. If you have both software packages installed, your menu will look similar to the following:



MAXTOR ONETOUCH III FIREWIRE 400/USB 2.0 WINDOWS VISTA INSTALLATION

Storing Audio

Using your computer as an audio jukebox is a very popular application. This allows you to store and play thousands of your favorite songs. You can also create and manage an audio library from your Maxtor OneTouch III.

Editing Video

Using a computer to capture and edit video recorded with a digital camcorder is quickly becoming popular. Digital video files are typically very large, using about 13 GB per hour of video content. Maxtor recommends connecting your drive using the FireWire interface for optimal results.

Playing Games

CD-ROM-based games typically run faster when they are on a hard drive rather than running from the CD. You can use your Maxtor OneTouch III to store and play CD-ROM games.

Installing Applications

You may install and run applications from your drive like other drives on your system. If you connect the drive to your system using a USB 1.1 interface, the data transfer rate is approximately 1 MB per second. Because of this, installing applications on a drive using the USB 1.1 interface is not recommended.

Many applications installed on your drive will only run on the computer where the application was installed. If you move your drive to another computer, the application may not function. Once the drive is reconnected to the computer the application was originally installed, the application will function properly.

Connecting and Disconnecting Your OneTouch III

The FireWire and USB interfaces allow you to hot swap your Maxtor OneTouch III; that is, connect and disconnect the drive while the computer and your drive are turned on.

To connect the OneTouch III to your computer

1. Make sure your Maxtor OneTouch III is turned on and the light is illuminated. Connecting your computer to a drive that is not powered on can cause your computer to behave erratically or freeze.
2. Plug the FireWire or USB cable into your Maxtor OneTouch III and your computer.

To disconnect the OneTouch III from your computer

1. Double-click the Windows Unplug or Eject Hardware icon in your system icon tray. A list of device choices appears.
2. Select your Maxtor OneTouch III and follow the on-screen directions to eject the drive. The system will display a message saying that you can safely remove the drive.
3. Disconnect your Maxtor OneTouch III from your computer. Your system may not allow you to disconnect the drive. In this case, you may need to close all open applications and documents or shut down your system completely to disconnect the drive safely.



WARNING: Removing the Maxtor OneTouch III from your computer without disconnecting it properly through the operating system can result in lost or damaged files.

MAXTOR ONETOUCH III FIREWIRE 400/USB 2.0 WINDOWS VISTA INSTALLATION

Naming Your OneTouch III

Your untitled Maxtor OneTouch III drive appears in the same way as your other drives, with a new drive letter assigned by the operating system. The assigned letter will vary depending upon the number of other drives connected to your computer. Make a note of this drive letter. It's a good idea to name your new drive so it's easy to identify later when you use it for backing up your files.

1. Open the **My Computer** icon.
2. Right-click your **Maxtor OneTouch III** icon and select **Properties**.
The Properties window will open.
3. In the **Label** section at the top of the window, enter a **name**.
For example: "**Maxtor**."

Security Lock

Your new Maxtor OneTouch III includes a security locking slot on the back of the drive. The slot is compatible with most security locking cables.

