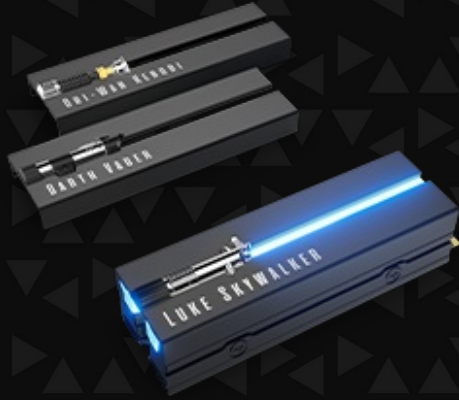


Choose Your Side of the Force



Lightsaber Collection Special Edition FireCuda PCIe Gen4 NVMe SSD



Choose Your Side of the Force

Prepare for battle with the officially licensed Lightsaber™ Collection Special Edition FireCuda® PCIe Gen4 NVMe SSD. A low-profile heatsink helps dissipate heat and reduce thermal throttling, while you harness up to 7,300 MB/s of speed that this SSD has pulsing inside. Swap between three iconic lightsaber faceplates — Obi-Wan Kenobi™, Darth Vader™, and Luke Skywalker™ — thanks to a one-of-kind interchangeable design.



Key Features

Feel the Force

Features three officially licensed and iconic lightsaber designs — Obi-Wan Kenobi, Darth Vader, and Luke Skywalker.

Interchangeable Design

A one-of-kind design lets you swap out which faceplate fits your collection at any moment.*

*Heatsink can exceed standard M.2 specs.

Verify system has space for installation at

www.seagate.com

A Powerful Glow

Customisable RGB LED lighting brings a galaxy of atmosphere to your drive.*

*Motherboard with 5V addressable header

required for RGB LED light functionality.

Choose Your Side of the Force



LIGHTSABER COLLECTION SPECIAL EDITION FIRECUDA PCIE GEN4 NVME SSD

Fulfil Your Destiny

Accumulate an array of media, files, and games with up to 2 TB of formidable capacity.

Cool Speed Ahead

Custom heatsink helps minimise thermal throttling and maintain peak performance for longer periods of time.

We've Got Your Back

When the unexpected happens — like water damage or natural disaster — Rescue Services help you defend against data loss and retrieval costs so you can rest easier.



| RETAIL PACKAGING | BOX DIMENSIONS | MASTER CARTON DIMENSIONS | PALLET DIMENSIONS |
|------------------|------------------|--------------------------|-------------------|
| Length (in/mm) | 6.181 in/157 mm | 10.709 in/272 mm | 47.992 in/1219 mm |
| Width (in/mm) | 6.102 in/155 mm | 7.48 in/190 mm | 40 in/1016 mm |
| Depth (in/mm) | 0.906 in/23 mm | 9.134 in/232 mm | 41.22 in/1047 mm |
| Weight (lb/kg) | 0.419 lb/0.19 kg | 5.379 lb/2.44 kg | 460.766 lb/209 kg |

| QUANTITIES | |
|---------------------------|----|
| Boxes per Master Carton | 10 |
| Master Cartons per Pallet | 80 |
| Pallet Layers | 4 |

| SYSTEM REQUIREMENTS | WHAT'S INCLUDED |
|--|--|
| <ul style="list-style-type: none"> M.2 (M key) slot, PCIe® Gen4x4 interface (backwards compatible with PCIe Gen3 and PCIe Gen5 interfaces) Windows® 10, Windows® 11 Linux Motherboard with 5V addressable header (for RGB LED light functionality) | <ul style="list-style-type: none"> Lightsaber Legends Special Edition FireCuda PCIe Gen4 NVMe SSD RGB LED connector cable 40 cm Quick start guide |

| REGION | MODEL NUMBER | CAPACITY | LIMITED WARRANTY (YEARS) | UPC CODE | EAN CODE | MULTI-PACK UPC |
|--------|---------------|----------|--------------------------|--------------|---------------|----------------|
| WW | ZP1000GM3A053 | 1TB | 5 | 763649174548 | 8719706430814 | 10763649174545 |
| WW | ZP2000GM3A033 | 2TB | 5 | 763649174555 | 8719706430821 | 10763649174552 |

¹ Heatsink can exceed standard M.2 specs. Verify system has space for installation at www.seagate.com

² Motherboard with 5V addressable header required for RGB LED light functionality.

Choose Your Side of the Force

LIGHTSABER COLLECTION SPECIAL EDITION FIRECUDA PCIE GEN4 NVME SSD

| SPECIFICATIONS | 2TB | 1TB |
|---|-------------------------------------|-------------------------------------|
| Standard Model | ZP2000GM30033 | ZP1000GM30053 |
| Interface | PCIe Gen4 x4 NVMe 1.4 | PCIe Gen4 x4 NVMe 1.4 |
| NAND Flash Memory | 3D TLC | 3D TLC |
| Form Factor | M.2 2280 with heatsink ¹ | M.2 2280 with heatsink ¹ |
| PERFORMANCE | | |
| Sequential Read (Max, MB/s), 128KB ² | 7300MB/s | 7300MB/s |
| Sequential Write (Max, MB/s), 128KB ² | 6,900 | 6,000 |
| Random Read (Max, IOPS), 4 KB QD32 T8 ² | 1000000IOPS | 800000IOPS |
| Random Write (Max, IOPS), 4 KB QD32 T8 ² | 1,000,000 | 1,000,000 |
| ENDURANCE/RELIABILITY | | |
| Total Bytes Written (TB) | 2,550 | 1,275 |
| Mean Time Between Failures (MTBF, hours) | 1800000 hr | 1800000 hr |
| Rescue Data Recovery Services (years) ³ | 3 | 3 |
| Warranty, Limited (years) | 5 | 5 |
| POWER MANAGEMENT | | |
| Active Power, Average (W) | 7.8 W | 6.3 W |
| Idle Power PS3, Average (mW) | 25 W | 20 W |
| Low Power L1.2 mode (mW) | <5 | <5 |
| ENVIRONMENTAL | | |
| Temperature, Operating Internal (°C) | 0°C – 70°C | 0°C – 70°C |
| Temperature, Non-operating (°C) | -40°C – 85°C | -40°C – 85°C |
| Shock, Non-operating: 0.5 ms (Gs) | 1500 Gs | 1500 Gs |
| SPECIAL FEATURES | | |
| TRIM | Yes | Yes |
| S.M.A.R.T. | Yes | Yes |
| Halogen-free | Yes | Yes |
| RoHS compliance | Yes | Yes |
| PHYSICAL | | |
| Length (mm/in, max) | 80.15 mm/3.155 in | 80.15 mm/3.155 in |
| Width (mm/in, max) | 25.0 mm/0.984 in | 25.0 mm/0.984 in |
| Height (mm/in, max) | 19.0 mm/0.748 in | 19.0 mm/0.748 in |
| Weight (lb/g) | 47 g/0.104 lb | 47 g/0.104 lb |

¹ Please verify that your system provides enough space for installation. The FireCuda 530 with heatsink exceeds dimensions of a standard M.2 2280 form factor. Heatsink is pre-installed and should not be removed as it can damage the SSD.

² Fresh out of box (FOB) performance obtained on newly formatted drive. Performance may vary based on SSD's firmware version, system hardware, and configuration. Performance based on CrystalDiskMark v.7.0.0 x64 on Windows 10 host with PCIe Gen4 motherboard.

³ Rescue Data Recovery Services not available in all countries.

SEAGATE.COM

© 2022 Seagate Technology LLC. All rights reserved. Seagate, Seagate Technology, and the Spiral logo are registered trademarks of Seagate Technology LLC in the United States and/or other countries. FireCuda and the FireCuda logo are either trademarks or registered trademarks of Seagate Technology LLC or one of its affiliated companies in the United States and/or other countries. The PCIe word mark and/or PCIeExpress design mark are registered trademarks and/or service marks of PCI-SIG. All other trademarks or registered trademarks are the property of their respective owners. When referring to drive capacity, one gigabyte, or GB, equals one billion bytes and one terabyte, or TB, equals one trillion bytes. Your computer's operating system may use a different standard of measurement and report a lower capacity. In addition, some of the listed capacity is used for formatting and other functions, and thus will not be available for data storage. Actual data rates may vary depending on operating environment and other factors, such as chosen interface and disk capacity. Seagate reserves the right to change, without notice, product offerings or specifications. DS2108.2-2209 AMER