

Updating the Intel® SATA Driver on the 5big Enclosure

Your LaCie 5big Storage Server performance may be enhanced with a simple driver update. Drives greater than 2TB are currently supported on the USB 2.0 ports of your 5big Storage Server. Once the Intel® SATA driver update is installed on your system, drives greater than 2TB will also be supported on the eSATA port.

Before starting the update, please go to www.lacie.com/support to find the download page for your product. Download the SATA driver into a folder that you can easily access on your LaCie 5big Storage Server. For example, a folder with the path `C:\Drivers\New Drivers`. You will navigate to this folder during the update.

Please note that the server must restart to complete the driver update.

1. Click **Start > Server Manager**. Select **Diagnostics > Device Manager** then click the + symbol in front of **IDE ATA/ATAPI controllers** (Fig. 01).

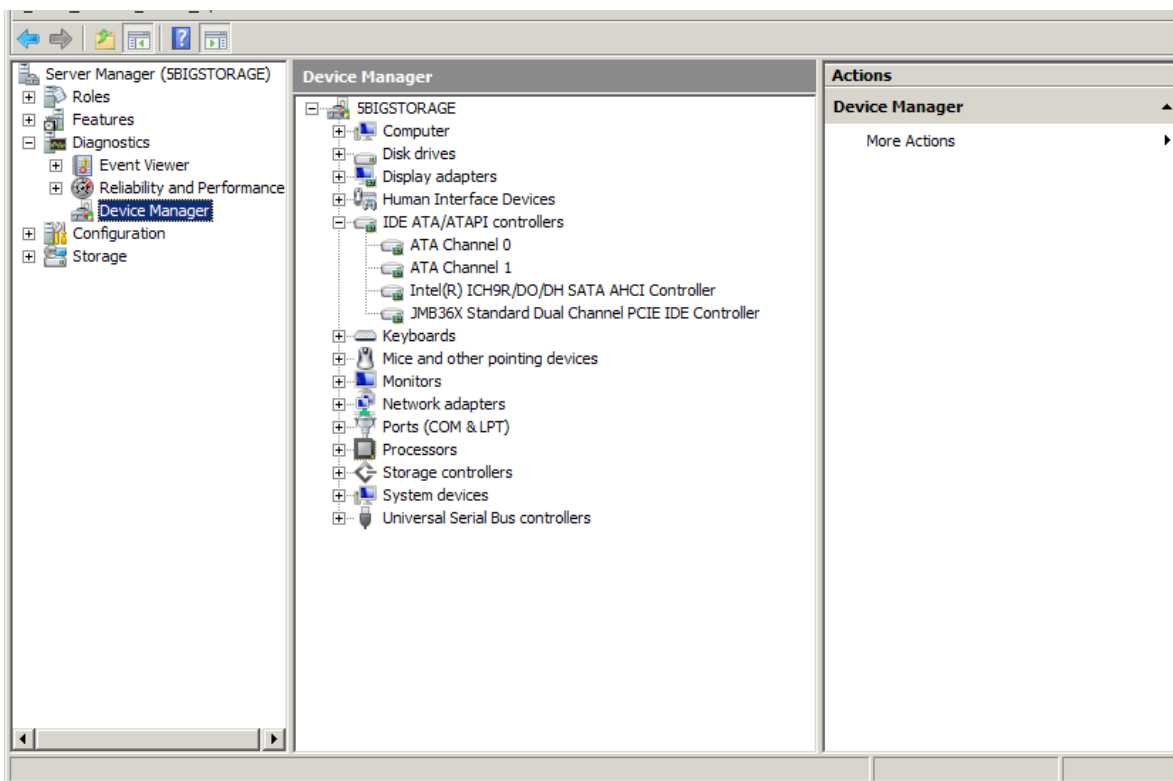


Fig. 01

continued on the next page >>

2. Right-click on **Intel ICH9R/D0/DH SATA AHCI Controller** to select **Properties** (Fig. 02).

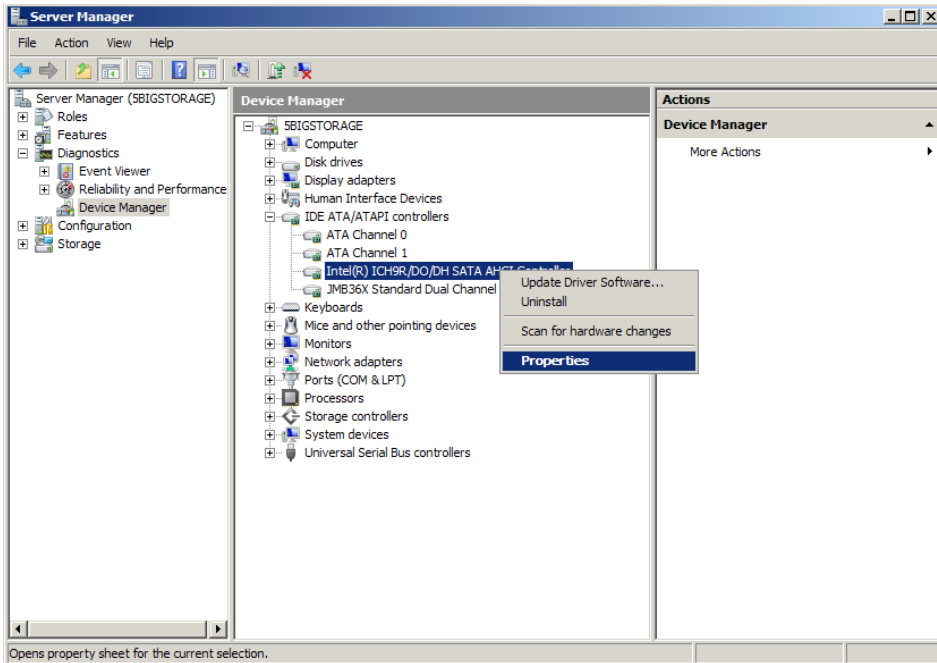


Fig. 02

3. Select the tab **Driver** to click **Driver Details** (Fig. 03).

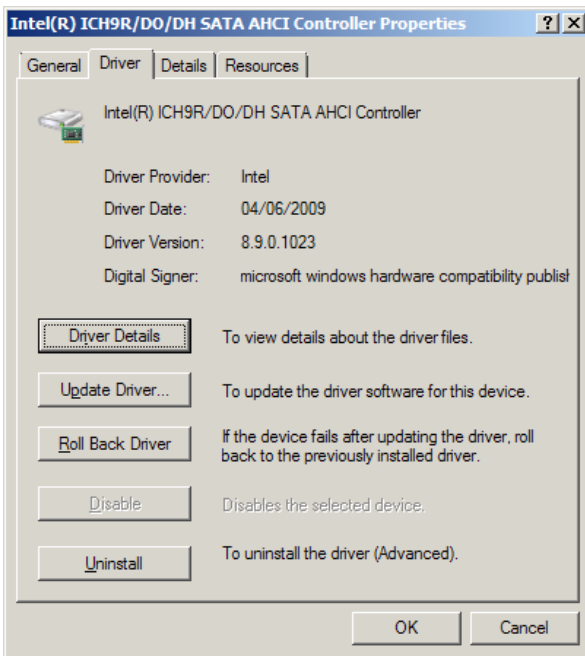


Fig. 03

continued on the next page >>

4. In this example, the SATA driver is version 8.9.0.1023 (Fig. 04). If your version is the same as the downloaded driver or higher, do not continue with the update. If the driver is an earlier version, Click **OK**.

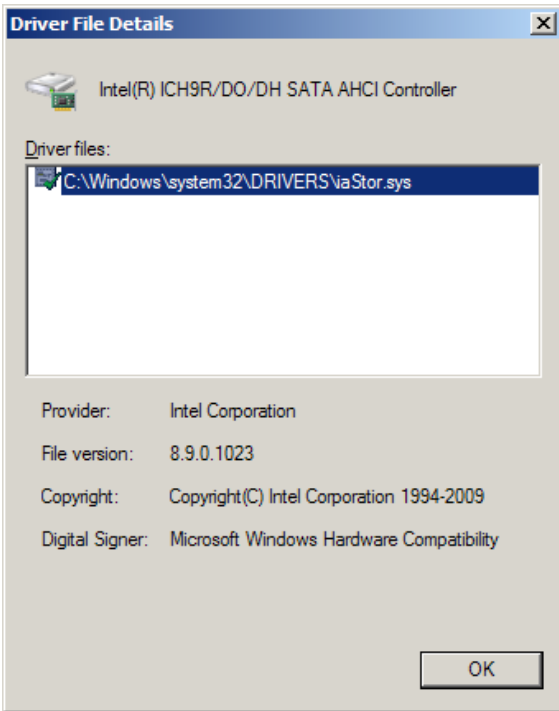


Fig. 04

5. Click **Update Driver** (Fig. 05).

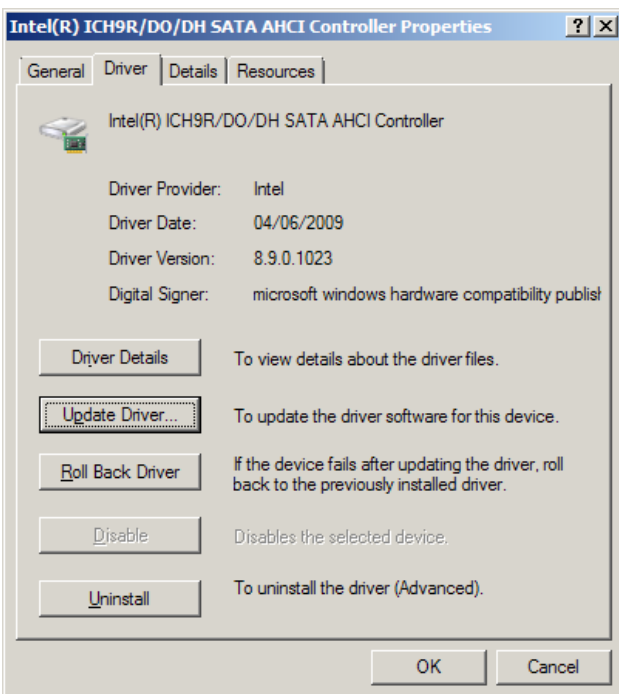


Fig. 05

[continued on the next page>>](#)

6. Click **Browse my computer for driver software** (Fig. 06).

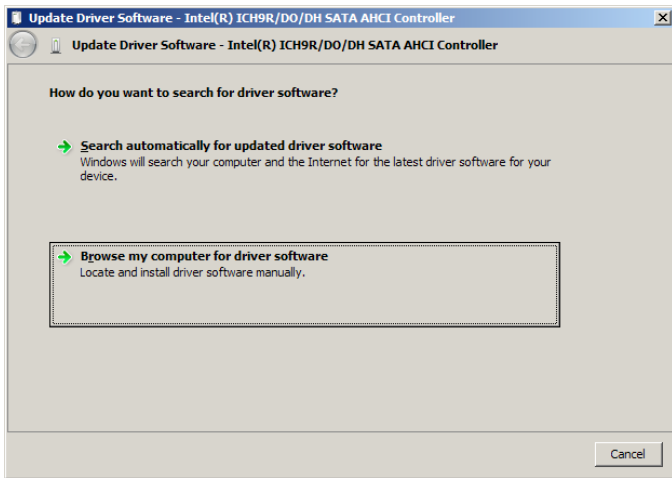


Fig. 06

7. Click **Browse** to search the location of the SATA driver downloaded from the LaCie Support web site. Click **Next** (Fig. 07).

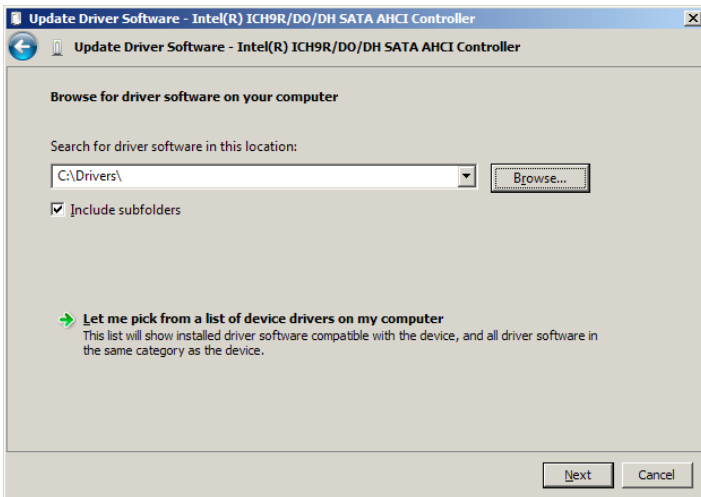


Fig. 07

continued on the next page>>

8. Find the folder with the driver (Fig. 08).

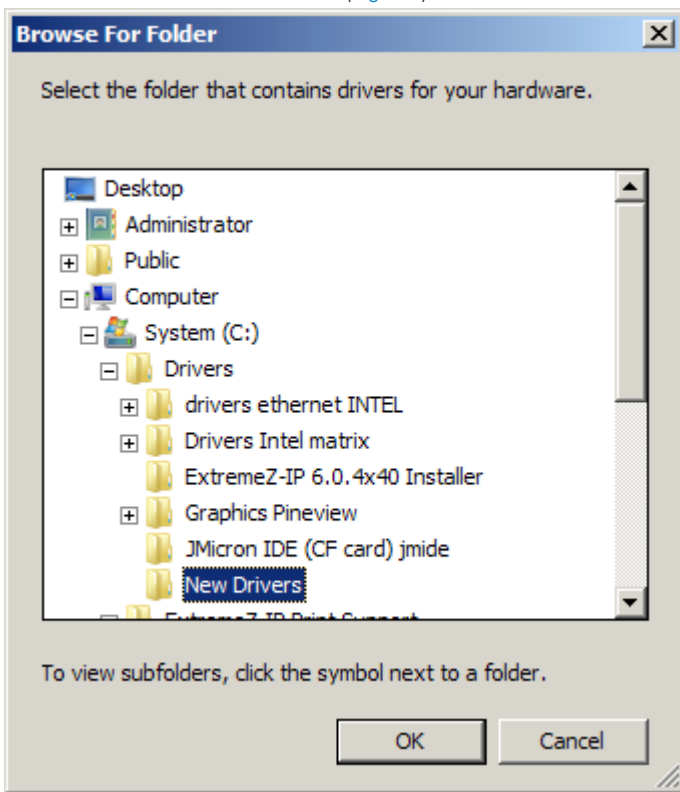


Fig. 08

9. Confirm the path of the driver before clicking Next to install new driver (Fig. 09).

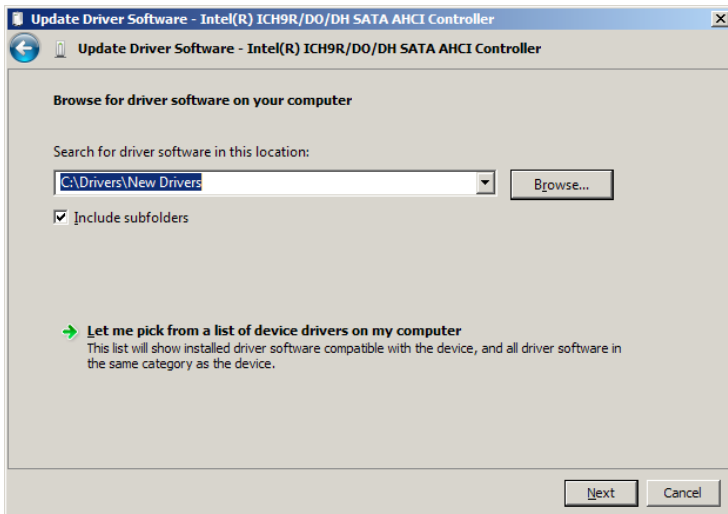


Fig. 09

continued on the next page >>

10. The driver will take a moment to install. When prompted, click **Close** (Fig. 10).

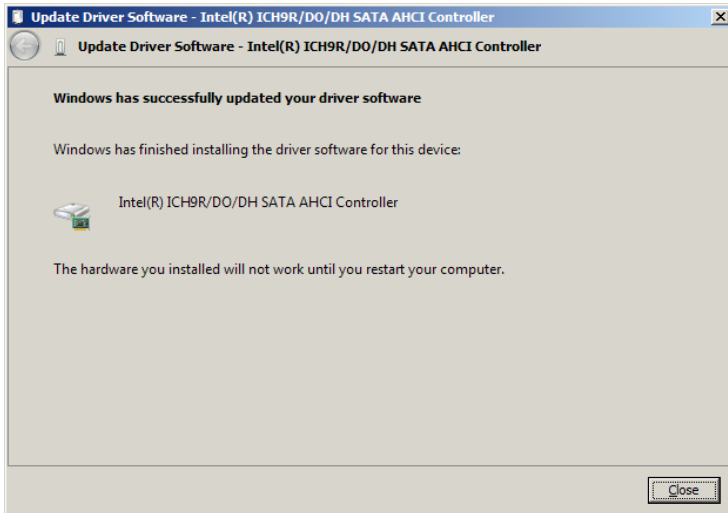


Fig. 10

11. Restart the server to complete the driver update.