



Genshin Impact Limited Edition External SSD User Manual



Click here to access an up-to-date online version of this document. You will also find the most recent content as well as expandable illustrations, easier navigation, and search capability.

Contents

1	Welcome	4
	Box contents	4
	Minimum system requirements	4
	• Ports	4
	• Operating system	4
	• Minimum free disk space	4
2	Getting Started	5
	Genshin Impact Limited Edition External SSD performance	5
	Connect the USB cable	5
	Set up Genshin Impact Limited Edition External SSD	5
	• Start here	6
	• Register your device	6
	• Download Toolkit	6
	• Install Toolkit	7
3	Use Toolkit to Customize RGB Settings and More	8
	Customize RGB color settings	8
	Start a backup plan (Windows only)	8
	Create mirror folders	8
4	Optional Formatting and Partitioning	9
	Choosing a file system format	9
	• Compatibility with both Windows and Macs	9
	• Optimized performance for Windows	9
	• Optimized performance for macOS	9
	• Learn more	10
	Formatting instructions	10
5	Safely Remove Device From Your Computer	11
	Windows	11
	Mac	11
	• Eject via Finder window	11
	• Eject via Desktop	11
6	Frequently Asked Questions	13
	All users	13
	• Problem: My file transfers are too slow	13
	• Problem: I have an older computer with USB 3.0 (Type A) ports	13
	• Problem: I must use a USB hub for my USB devices	13

- Problem: The provided USB cable is too short 14
- Problem: I'm receiving file transfer error messages 14
- Mac 14
 - Problem: The drive icon does not appear on my desktop 14
 - Problem: I want to use my device with Time Machine 15
- Windows 15
 - Problem: The drive icon doesn't appear in Computer 15

7 Regulatory Compliance 16

- China RoHS 16
- Taiwan RoHS 16

Welcome

Tilt the scales of justice in your favor with the officially licensed Genshin Impact Limited Edition External SSD.

For common questions and answers about your device, see [Frequently Asked Questions](#) or visit [Seagate customer support](#).

Box contents

- Seagate Genshin Impact Limited Edition External SSD
- USB-C cable (USB 3.2 Gen 2)
- Quick start guide

Minimum system requirements

Ports

Connect your drive to a computer with a USB-C port. If your computer doesn't have a USB-C port, use a USB-C to USB-A cable (not included).

Operating system

Go to [Operating System Requirements for Seagate Hardware & Software](#)

Minimum free disk space

600MB recommended.

Getting Started

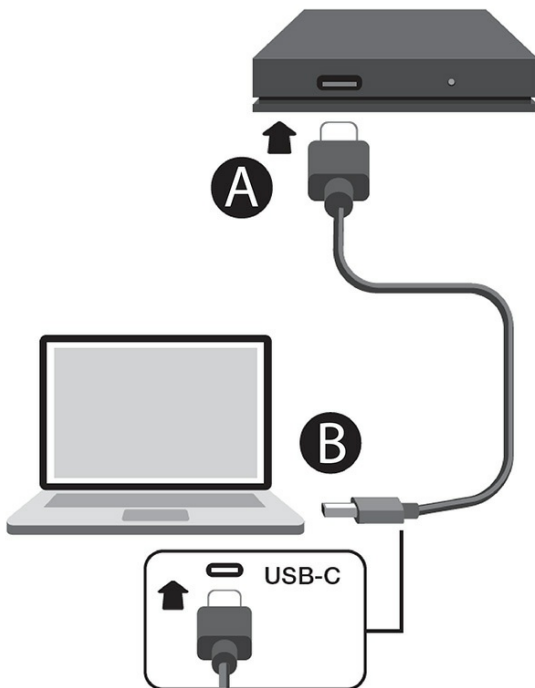
Genshin Impact Limited Edition External SSD performance

You can connect your device to any USB-C port on your computer, but transfer rates vary:

Port	Transfer rates
USB 3.2 Gen 1	up to 5Gb/s
USB 3.2 Gen 2	up to 10Gb/s

Connect the USB cable

Use the USB-C cable to connect Genshin Impact Limited Edition External SSD to a computer's USB-C port. If your computer doesn't have a USB-C port, use a USB-C to USB-A cable (not included).



Set up Genshin Impact Limited Edition External

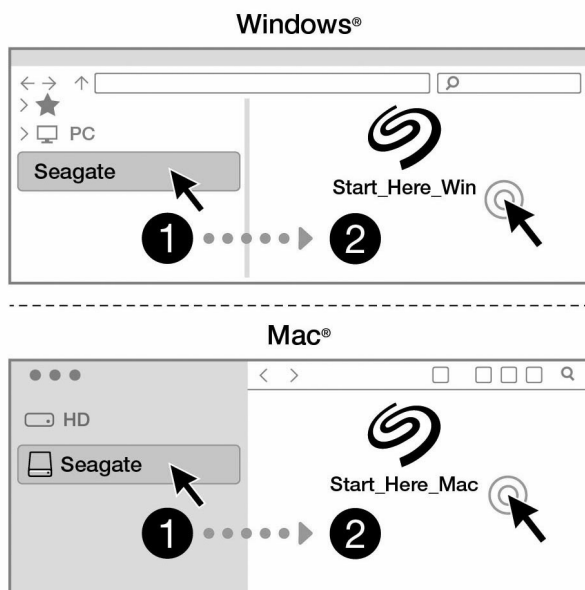
SSD

The setup process lets you:

Register your drive	Get the most from your drive with easy access to information and support.	www.seagate.com/register
Install Toolkit	Set up backup plans, mirror folders, and more.	www.seagate.com/toolkit

Start here

Using a file manager such as Finder or File Explorer, open Genshin Impact Limited Edition External SSD and select the **Start_Here_Win** or **Start_Here_Mac**.



Your computer must be connected to the internet to register your device and install Toolkit.

Register your device

Enter your information and select **Register**.

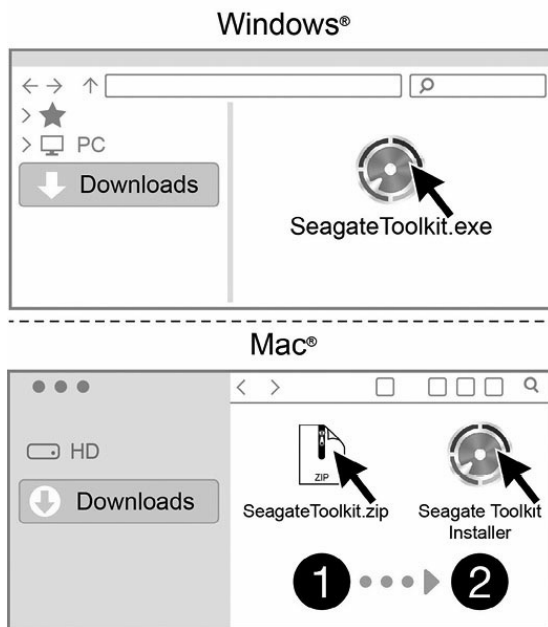
Download Toolkit

Select the **Download** button.

Install Toolkit

Using a file manager such as Finder or File Explorer, go to the folder where you receive downloads.

- **Windows**—Select the **SeagateToolkit.exe** file to launch the application.
- **Mac**—Open the **SeagateToolkit.zip** file. Select the **Seagate Toolkit Installer** to launch the application.



Your computer must be connected to the internet to install Toolkit.

Use Toolkit to Customize RGB Settings and More

Use Toolkit to manage RGB color settings and set up backup plans for your drive.

Customize RGB color settings

For leveled-up illumination, use Toolkit to customize your drive's LED with a range of RGB colors and light patterns.

- [Click here](#) for details on managing RGB color settings.

Start a backup plan (Windows only)

Create a plan customized for the content, storage device, and schedule of your choosing.

- [Click here](#) for details on setting up a backup plan.

Create mirror folders

Create a mirror folder on your PC or Mac that is synced to your storage device. Whenever you add, edit, or delete files in one folder, Toolkit automatically updates the other mirror folder with your changes.

- [Click here](#) for details on creating a mirror folder.

Optional Formatting and Partitioning

Your device is preformatted exFAT (Extended File Allocation Table) for compatibility with both Mac and Windows computers.

Choosing a file system format

When choosing a file system format, consider whether **compatibility** or **performance** is more important in your everyday use of the drive.

- **Compatibility**—You need a cross-platform format because you connect your drive to both PCs and Macs.
- **Performance**—You connect your drive with only one type of computer, so you can optimize file copy performance by formatting the drive in the native file system for your computer operating system.

Compatibility with both Windows and Macs

exFAT is a lightweight file system compatible with all versions of Windows and modern versions of macOS. If you use your drive with both PCs and Macs, format your drive in exFAT. While exFAT offers cross-platform access to both computers, keep in mind the following:

- exFAT is not compatible or recommended for built-in backup utilities such as File History (Windows) and Time Machine (macOS). If you want to use one of these backup utilities, you should format the drive in the native file system for the computer running the utility.
- exFAT is not a journaled file system, which means it can be more susceptible to data corruption when errors occur or the drive is not disconnected properly from the computer.

Optimized performance for Windows

NTFS (New Technology File System) is a proprietary journaling file system for Windows. macOS can read NTFS volumes, but it can't natively write to them. This means your Mac can copy files from an NTFS-formatted drive, but it can't add files to or remove files from the drive. If you need more versatility than this one-way transfer with Macs, consider exFAT.

Optimized performance for macOS

Apple offers two proprietary file systems.

Mac OS Extended (also known as Hierarchical File System Plus or HFS+) is an Apple file system used since 1998 for mechanical and hybrid internal drives. macOS Sierra (version 10.12) and earlier use HFS+ by

default.

APFS (Apple File System) is an Apple file system optimized for solid state drives (SSDs) and flash-based storage systems, though it also works with hard disk drives (HDDs). It was first introduced with the release of macOS High Sierra (version 10.13). APFS can only be read by Macs running High Sierra or later.

When choosing between Apple file systems, consider the following:

- Windows cannot natively read or write to APFS or HFS+ volumes. If you need cross-platform compatibility, you should format the drive in exFAT.
- If you intend to use your drive with Time Machine:
 - The default format for macOS Big Sur (version 11) and later is APFS.
 - The default format for macOS Catalina (version 10.15) and earlier is HFS+.
- If you intend to use your drive to move files between Macs running older OS versions, consider formatting your drive in HFS+ rather than APFS.
- macOS file systems and Android: Formatting your drive for macOS may not be supported with connections to Android mobile devices.

Learn more

For additional considerations when choosing a file system format, see [File System Format Comparisons](#).

Formatting instructions

For instructions on formatting your drive, see [How to format your drive](#).

Safely Remove Device From Your Computer

Always eject a storage drive from your computer before physically disconnecting it. Your computer must perform filing and housekeeping operations on the drive before it is removed. If you unplug the drive without using the operating system's software, your files can become corrupt or damaged.

Windows

Use the Safely Remove tool to eject a device.

1. Click the Safely Remove Hardware icon in your Windows System Tray to view the devices you can eject.
2. If you don't see the Safely Remove Hardware icon, click the Show hidden icons arrow in the system tray to display all icons in the notification area.
3. In the list of devices, choose the device you want to eject. Windows displays a notification when it is safe to remove the device.
4. Disconnect the device from the computer.

Mac

There are several ways you can eject your device from a Mac. See below for two options.

Eject via Finder window

1. Open a Finder window.
2. On the sidebar, go to Devices and locate the drive you want to eject. Click the eject symbol to the right of the drive name.
3. Once the device disappears from the sidebar or, the Finder window closes, you can disconnect the interface cable from your Mac.

Eject via Desktop

1. Select the desktop icon for your device and drag it to the Trash.
2. When the device icon is no longer visible on your desktop, you can physically disconnect the device from your Mac.

Frequently Asked Questions

For help setting up and using your Seagate drive, review the frequently asked questions below. For additional support resources, go to [Seagate customer support](#).

All users

Problem: My file transfers are too slow

Q: Are both ends of the USB cable firmly attached?

A: Review troubleshooting tips for cable connections below:

- Check both ends of the USB cable and make sure that they are fully seated in their respective ports.
- Try disconnecting the cable, waiting 10 seconds, and then reconnecting it.
- Try a different USB cable.

Q: Are there other USB devices connected to the same port or hub?

A: Disconnect other USB devices and see if the drive's performance improves.

Problem: I have an older computer with USB 3.0 (Type A) ports

Q: Will my drive's USB-C (USB 3.2 Gen 2) port work with my computer's USB 3.0 port?

A: Yes, the device is compatible with USB 3.0 ports, however, the product does not include a cable with a USB Type A connector. Performance is limited to USB 3.0 transfer rates.

Problem: I must use a USB hub for my USB devices

Q: Can I use my drive with a USB hub?

A: Yes, the drive can be connected to a USB hub. If you use a hub and encounter detection problems, slower than normal transfer rates, random disconnection from your computer, or other unusual issues, try connecting the drive directly to the computer's USB port.

Some USB hubs are less than efficient with power management, which can be problematic for connected

devices. In such a case, consider trying a powered USB hub that includes a power cable.

Problem: The provided USB cable is too short

Q: Can I use my device with a longer cable?

A: Yes, provided it is a cable that meets USB standards. However, Seagate recommends using the cable shipped with your device for the best results. If you use a longer cable and experience problems with detection, transfer rates, or disconnection, use the original cable included with your device.

Problem: I'm receiving file transfer error messages

Q: Did you get an "Error -50" message while copying to a FAT32 volume?

A: When copying files or folders from a computer to a FAT32 volume, certain characters in the names cannot be copied. These characters include, but are not limited to: ? < > / \ :

Check your files and folders to ensure that these characters are not in the names.

If this is a recurring problem or you cannot find files with incompatible characters, consider reformatting the drive to the computer's native file system format. See [Optional Formatting and Partitioning](#).

Mac

Problem: The drive icon does not appear on my desktop

Q: Is your Finder configured to hide drives on the desktop?

A: Go to Finder and then check **Preferences | General tab | Show these items on the desktop** Confirm that **Hard Disks** is selected.

Q: Is your drive mounting in the operating system?

A: Open Disk Utility at **Go | Utilities | Disk Utility**. If the drive is listed in the left-hand column, check your Finder preferences to see why it is not displayed on the desktop (review the question above).

Q: Does your computer's configuration meet the minimum system requirements for use with this drive?

A: Go to the following link for a list of supported operating systems www.seagate.com/os

Q: Did you follow the correct installation steps for your operating system?

A: Review the installation steps in [Getting Started](#).

Problem: I want to use my device with Time Machine.

Q: Can I use my device with Time Machine?

A: Yes. The drive is preformatted exFAT for use with both PC and Mac. For Time Machine, it must be reformatted to Mac. Reformatting will delete all data previously stored on the drive. Go to www.seagate.com/time-machine for more details.

Windows

Problem: The drive icon doesn't appear in Computer

Q: Is the drive listed in Device Manager?

A: All drives appear in at least one place in Device Manager.

Type **Device Manager** in Search to launch it. Look in the **Disk Drives** section and, if necessary, click the Plus (+) icon to view the full list of devices. If you're uncertain that your drive is listed, safely unplug it and then reconnect it. The entry that changes is your Seagate drive.

Q: Is your drive listed next to an unusual icon?

A: Windows Device Manager usually provides information about failures with peripherals. While the Device Manager can assist with troubleshooting most problems, it may not display the exact cause or provide a precise solution.

An unusual icon next to the drive can reveal a problem. For example, instead of the normal icon based on the type of device, it has an exclamation point, question mark or an X. Right click this icon and then choose **Properties**. The **General** tab provides a potential reason why the device is not working as expected.

Regulatory Compliance

Product Name	Seagate Genshin Impact Limited Edition External SSD
Regulatory Model Numbers	SRD0FV9

China RoHS



China RoHS 2 refers to the Ministry of Industry and Information Technology Order No. 32, effective July 1, 2016, titled Management Methods for the Restriction of the Use of Hazardous Substances in Electrical and Electronic Products. To comply with China RoHS 2, we determined this product's Environmental Protection Use Period (EPUP) to be 20 years in accordance with the Marking for the Restricted Use of Hazardous Substances in Electronic and Electrical Products, SJT 11364-2014.

中国 RoHS 2 是指 2016 年 7 月 1 日起施行的工业和信息化部令 32 号“电力电子产品限制使用有害物质管理办法”。为了符合中国 RoHS 2 的要求，我们根据“电子电气产品有害物质限制使用标识”(SJT 11364-2014) 确定本产品的环保使用期 (EPUP) 为 20 年。

部件名称 Part Name	有害物质 Hazardous Substances					
	铅 (Pb)	汞 (Hg)	镉 (Cd)	六价铬 (Cr ⁶⁺)	多溴联苯 (PBB)	多溴二苯醚 (PBDE)
固态驱动器 SSD	X	○	○	○	○	○
外接硬盘印刷电路板 Bridge PCBA	X	○	○	○	○	○
电源 (如果提供) Power Supply (if provided)	X	○	○	○	○	○
接口电缆 (如果提供) Interface cable (if provided)	X	○	○	○	○	○
其他外壳组件 Other enclosure components	○	○	○	○	○	○

本表格依据 SJ/T 11364 的规定编制。
This table is prepared in accordance with the provisions of SJ/T 11364-2014

○: 表示该有害物质在该部件所有均质材料中的含量均在 GB/T 26572 规定的限量要求以下。
○: Indicates that the hazardous substance contained in all of the homogeneous materials for this part is below the limit requirement of GB/T26572.

X: 表示该有害物质至少在该部件的某一均质材料中的含量超出 GB/T 26572 规定的限量要求。
X: Indicates that the hazardous substance contained in at least one of the homogeneous materials used for this part is above the limit requirement of GB/T26572.

Taiwan RoHS

Taiwan RoHS refers to the Taiwan Bureau of Standards, Metrology and Inspection's (BSMI's) requirements in standard CNS 15663, Guidance to reduction of the restricted chemical substances in electrical and electronic equipment. Beginning on January 1, 2018, Seagate products must comply with the "Marking of presence" requirements in Section 5 of CNS 15663. This product is Taiwan RoHS compliant. The following table meets the Section 5 "Marking of presence" requirements.

台灣RoHS是指台灣標準局計量檢驗局(BSMI)對標準CNS15663要求的減排電子電氣設備限用化學物質指引。從2018年1月1日起，Seagate產品必須符合CNS15663第5節「含有標示」要求。本產品符合台灣RoHS。下表符合第5節「含有標示」要求。

設備名稱：外接式儲存裝置，型號: SRDOFV9 Equipment Name: External Storage Device, Model: SRDOFV9		限用物質及其化學符號 Restricted Substance and its chemical symbol					
單元 Unit		鉛 Lead (Pb)	汞 Mercury (Hg)	鎘 Cadmium (Cd)	六價鉻 Hexavalent chromium (Cr ⁶⁺)	多溴聯苯 Polybrominated biphenyls (PBB)	多溴二苯醚 Polybrominated diphenyl ethers (PBDE)
固態驅動器	SSD	—	○	○	○	○	○
外接硬盤印刷電路板	Bridge PCBA	—	○	○	○	○	○
電源 (如果提供)	Power Supply (if provided)	—	○	○	○	○	○
傳輸線材 (如果提供)	Interface cable (if provided)	—	○	○	○	○	○
其他外殼組件	Other enclosure components	○	○	○	○	○	○
備考1. “超出0.1 wt %”及“超出0.01 wt %”係指限用物質之百分比含量超出百分比含量基準值。 Note 1: “Exceeding 0.1 wt %” and “exceeding 0.01 wt %” indicate that the percentage content of the restricted substance exceeds the reference percentage value of presence condition. 備考2. “○”係指該項限用物質之百分比含量未超出百分比含量基準值。 Note 2: “○” indicates that the percentage content of the restricted substance does not exceed the percentage of reference value of presence. 備考3. “—”係指該項限用物質為排除項目。 Note 3: The “—” indicates that the restricted substance corresponds to the exemption.							
額定電壓/額定電流: 5VDC == 1.5A 操作溫度: 5 - 40 °C							
本設備勿置於潮濕處。 請將產品置於手冊規定的環境使用溫度，以避免過熱。 連接至電源前，請先檢查電壓。				當設備不用時，請將所有電源線拔除，避免電壓不穩而造成傷害。 勿將任何液體灑入設備中，避免線路短路。 請勿自行調整或修理已通電的設備，以確保您的安全。			