



Serial Number Information for SANnet II 200 FC Field Replaceable Units (FRU's)

Preface

This document will cover how to find the serial numbers on a SANnet II 200 FC RAID Unit. The system administrator should be familiar with the SANnet II unit, how it works, its configuration and how to use one of the specified utilities to manage and maintain the system.

There are four ways to get this information.

- Physically inspect the FRU for the Serial Number
- Use SANscape
- Use SCCLI 2.1.1 or higher
- Use HyperTerminal or Telnet

Note: Not all serial numbers are available via software. This will be noted where applicable.

What is a FRU?

FRU is a **Field Replaceable Unit**. This means it can be replaced in the field or at a customer site. The FRU does not have to be shipped back to the factory for repair unless out of warranty. If under warranty and after the FRU is replaced the faulty FRU must be shipped back to Dot Hill.

What is a FRU ID?

A FRU ID is a Dot Hills Part Number and it is not the Serial Number. A FRU ID will be the same for a specific part like a Power Supply. All Power Supplies will have a FRU ID of FPSA003-xx (xx = revision).

What is a Serial Number?

A Serial Number is an alpha, numeric or alpha-numeric string that is unique to the FRU and is different on all similar parts.

What is Serial Number Warranty Entitlement Verification?

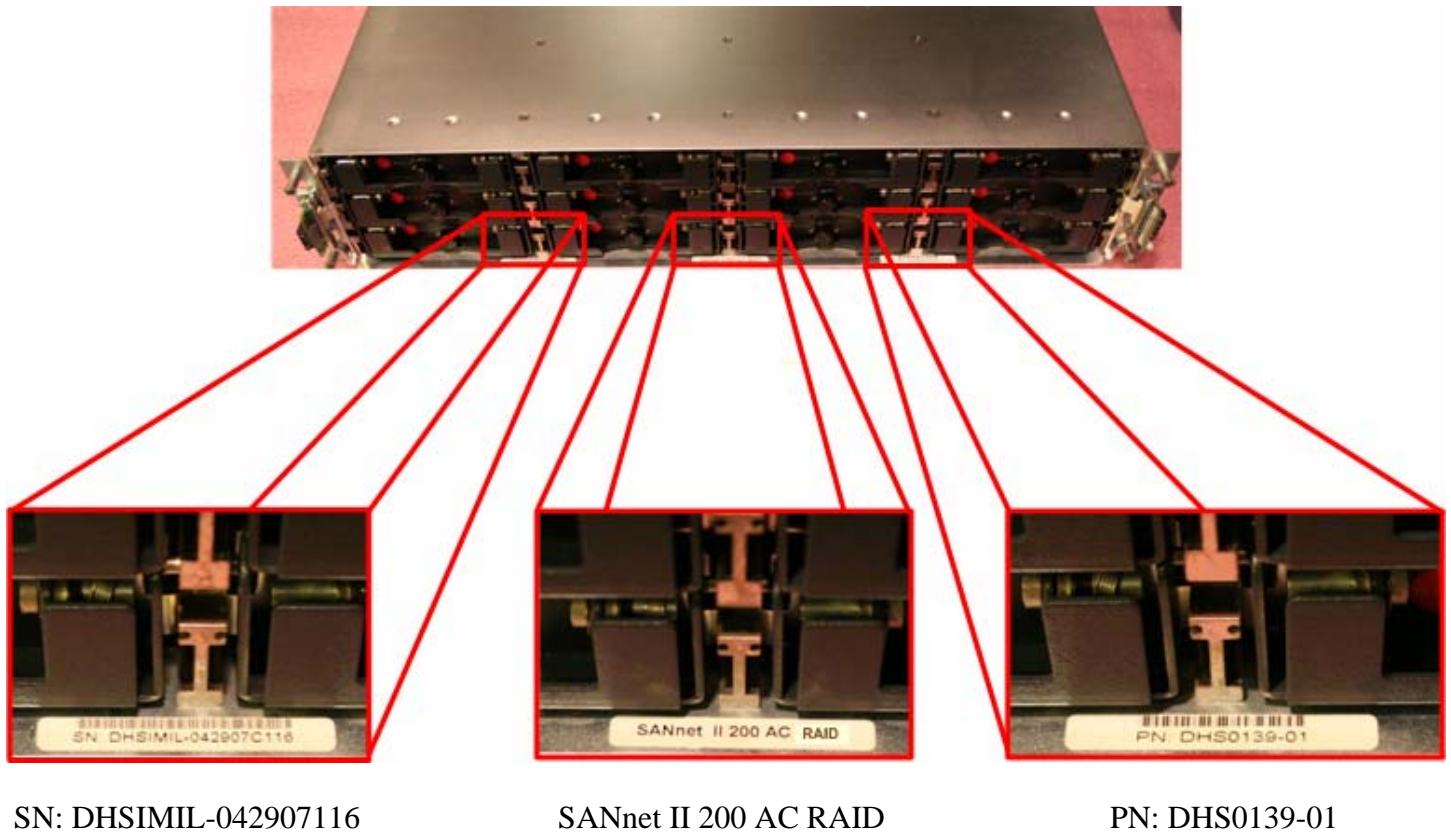
This is to verify warranty entitlement and for Dot Hill to be able to process the proper replacement part for an RMA. In order to process an RMA Dot Hill needs the complete Serial Number of the FRU. Partial Serial Numbers will not be accepted and the RMA will not be processed.

Note: Not all software outputs give the complete Serial Number. In SANscape when you view “View FRU” it only shows the last six alpha, numeric or alpha-numeric string of the Serial Number. In SCCLI under “show fru” it only shows the last six alpha, numeric or alpha-numeric string of the Serial Number as well.

If using a software utility and only get a six alpha, numeric or alpha-numeric string for a serial number, then a physical inspection will be needed to get the complete Serial Number.

Locating the Chassis serial number

Front View of the SANnet II 200 FC Unit



Using SCCLI 2.1.1 to locate Chassis serial number

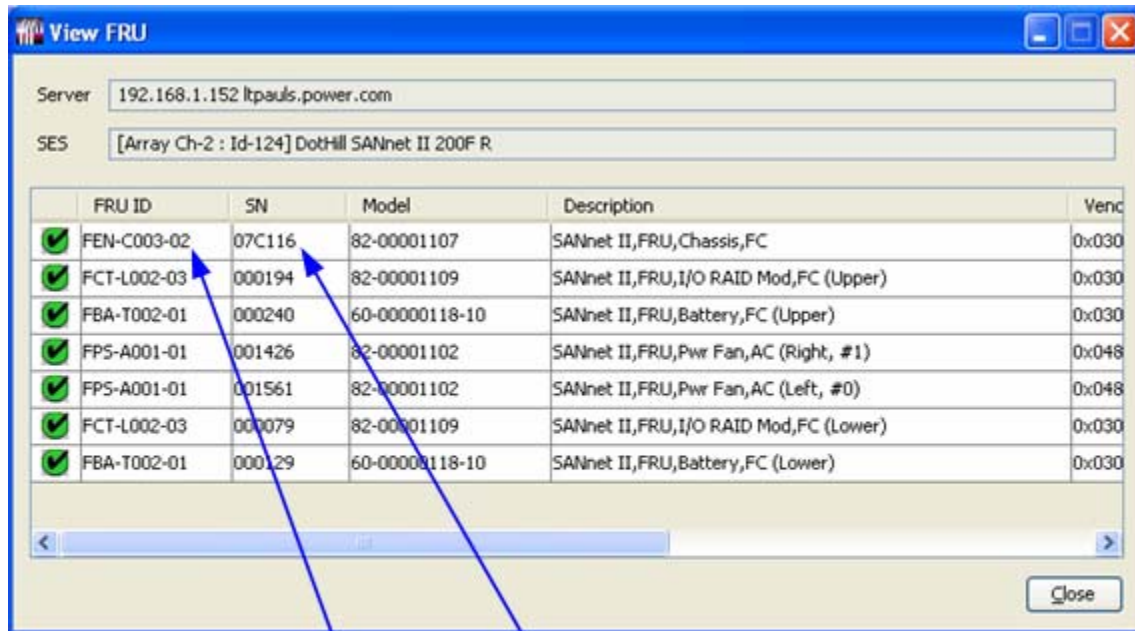
Output will be of all FRU's - Serial Number in Bold Red text – Sample is only of the Chassis fru.

Note: 07C116 are the same last 6 numbers of the Serial Number from the physical Chassis view.

SCCLI command

```
sccli> show fru
Name: FC_CHASSIS_BKPLN
Description: SANnet II,FRU,Chassis,FC
Part Number: FEN-C003
Serial Number: 07C116
Revision: 02
Manufacturing Date: Sun May 16 08:00:39 2004
Manufacturing Location: Penang,Malaysia
Manufacturer JEDEC ID: 0x0301
FRU Location: FC MIDPLANE SLOT
Chassis Serial Number: 07C116
FRU Status: OK
```

Using SANscape to locate Chassis serial number



Server: 192.168.1.152 ltpauls.power.com

SES: [Array Ch-2 : Id-124] DotHill SANnet II 200F R

	FRU ID	SN	Model	Description	Venc
✓	FEN-C003-02	07C116	82-00001107	SANnet II,FRU,Chassis,FC	0x030
✓	FCT-L002-03	000194	82-00001109	SANnet II,FRU,I/O RAID Mod,FC (Upper)	0x030
✓	FBA-T002-01	000240	60-00000118-10	SANnet II,FRU,Battery,FC (Upper)	0x030
✓	FPS-A001-01	001426	82-00001102	SANnet II,FRU,Pwr Fan,AC (Right, #1)	0x048
✓	FPS-A001-01	001561	82-00001102	SANnet II,FRU,Pwr Fan,AC (Left, #0)	0x048
✓	FCT-L002-03	000079	82-00001109	SANnet II,FRU,I/O RAID Mod,FC (Lower)	0x030
✓	FBA-T002-01	000129	60-00000118-10	SANnet II,FRU,Battery,FC (Lower)	0x030

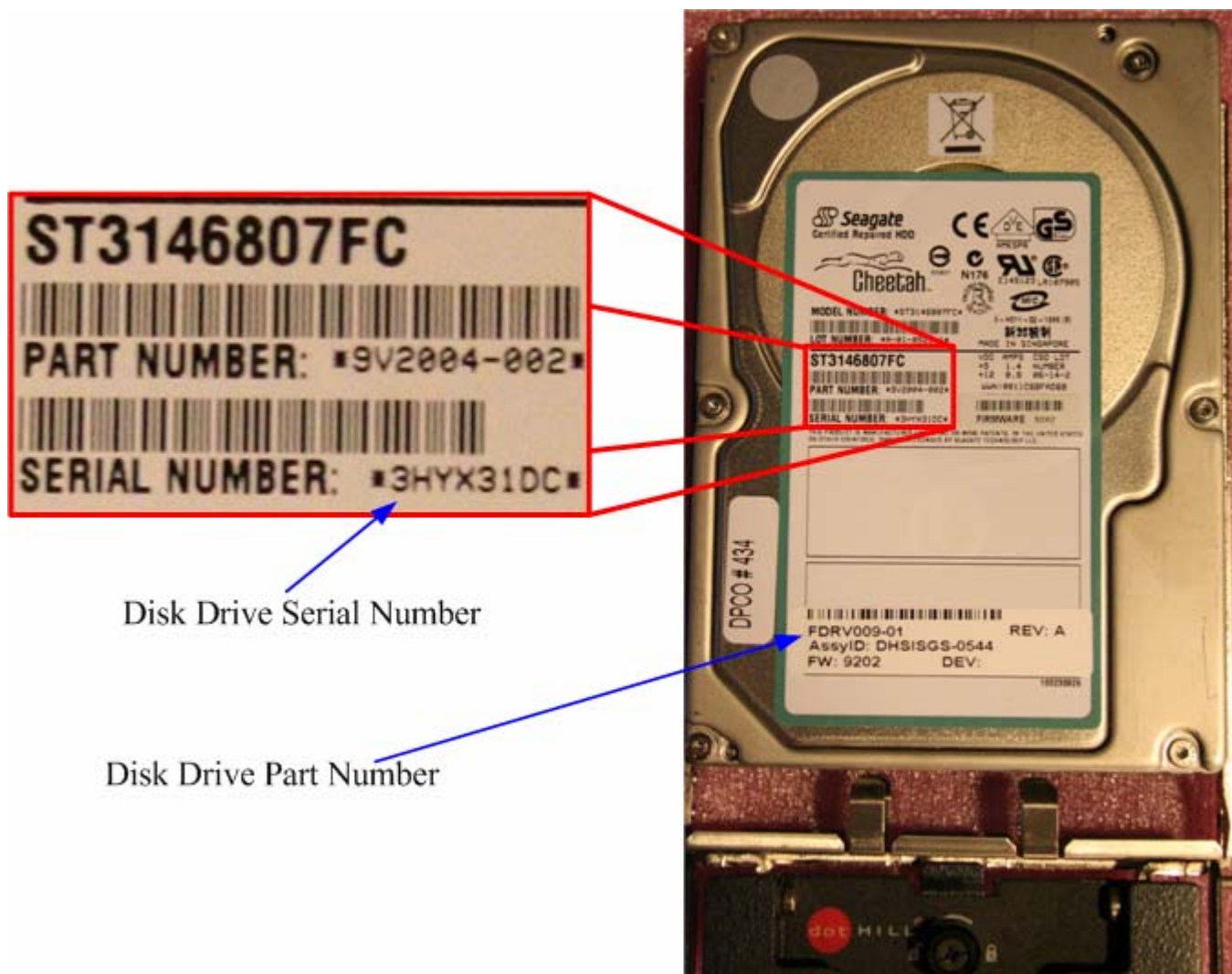
Close

Chassis FRU and Serial Number from SANscape

Using HyperTerminal or Telnet to locate Chassis serial number

Note: Not available through HyperTerminal or Telnet

Locating a Disk Drive serial number



There are many deviations to the serial number for disk drives. Below are some of the variants or examples to the serial and part numbers. But it is not limited to:

SANnet II,FC,Disk,300GB,10K

P/N: FDRV023-01

S/N: DHSIMIL-0633R2L7DP

SANnet II,SATA,Disk,A-A,400G,7K

P/N: FDRV016-01

S/N: DHSIMIP-053809B637

SANnet II,FC,Disk,146GB,10K

P/N: FDRV009-01

S/N: 3HYX2QY6

SANnet II,FC,Disk,146GB,15K

P/N: FDRV024-01

S/N: 3KN019W2

SANnet II,FC,Disk,73GB,15K

P/N: FDRV011-01

S/N: 3HW0NVR1

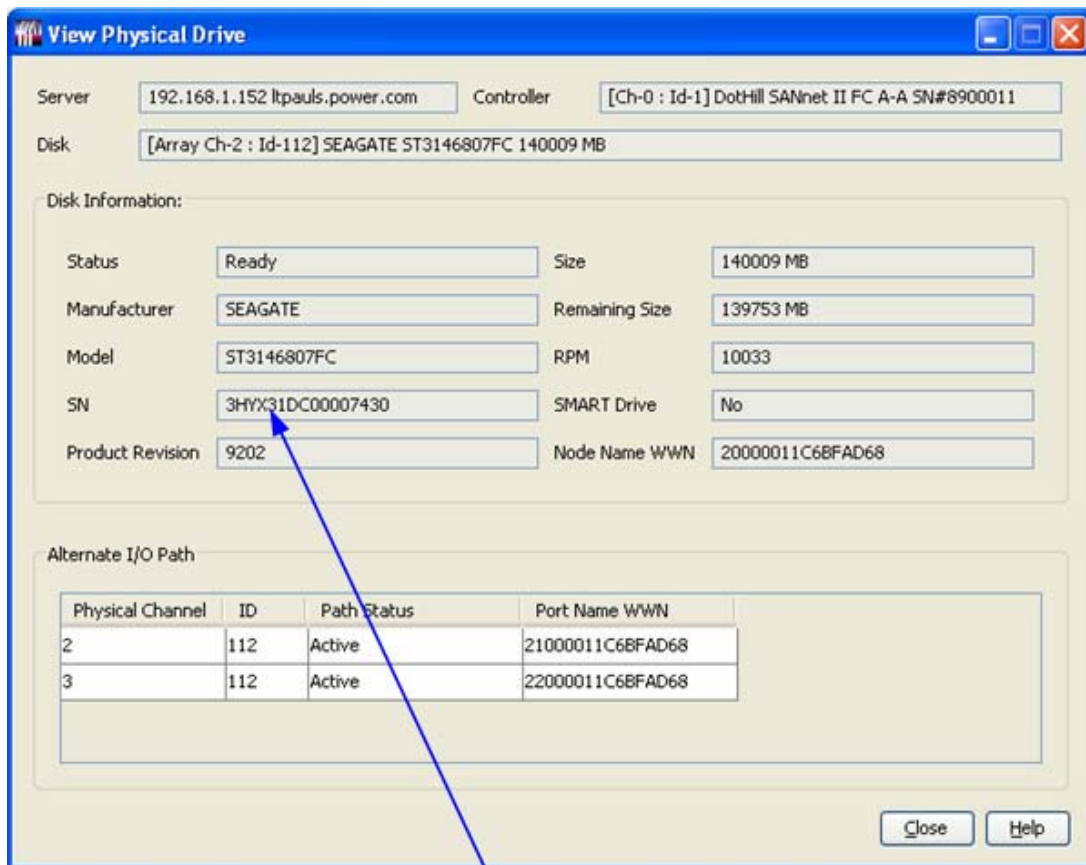
Using SCCLI 2.1.1 to locate Disk Drive serial number

Note: The drive in Ch2 (3) ID0 is the same drive in the previous picture of a drive. It is highlighted in red bold text below. Do not need to include the rest of the string only what is in red.

sccli> show disks

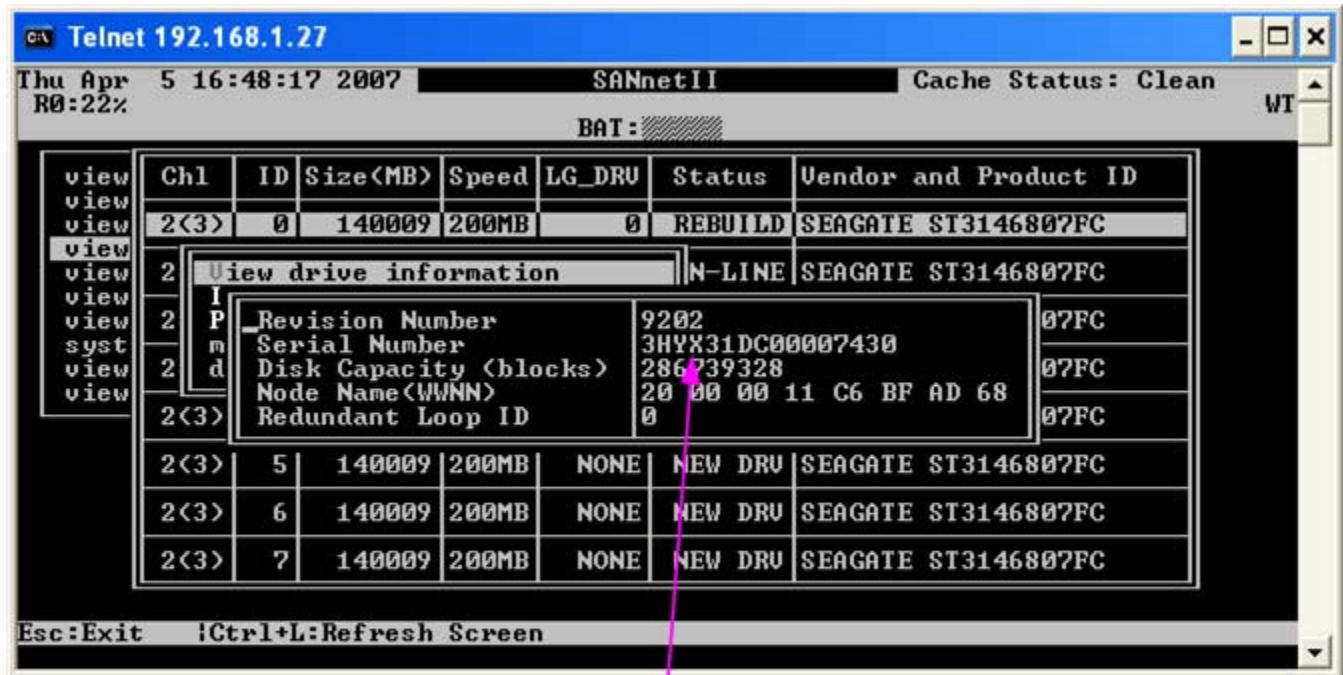
Ch	Id	Size	Speed	LD	Status	IDs	Rev
2(3)	0	136.73GB	200MB	ld0	REBUILD	SEAGATE ST3146807FC	9202
						S/N 3HYX31DC 00007430	
						WWNN 20000011C6BFAD68	
2(3)	1	136.73GB	200MB	ld0	ONLINE	SEAGATE ST3146807FC	9202
						S/N 3HY6L8D200007452	
						WWNN 2000000C502321B8	
2(3)	2	136.73GB	200MB	ld0	ONLINE	SEAGATE ST3146807FC	9202
						S/N 3HY6R0D500007450	

Using SANscape to locate Disk Drive serial number



FC Disk Drive Serial Number

Using HyperTerminal or Telnet to locate Disk Drive serial number



Telnet 192.168.1.27

Thu Apr 5 16:48:17 2007 SANnetII Cache Status: Clean
R0:22% BAT: /

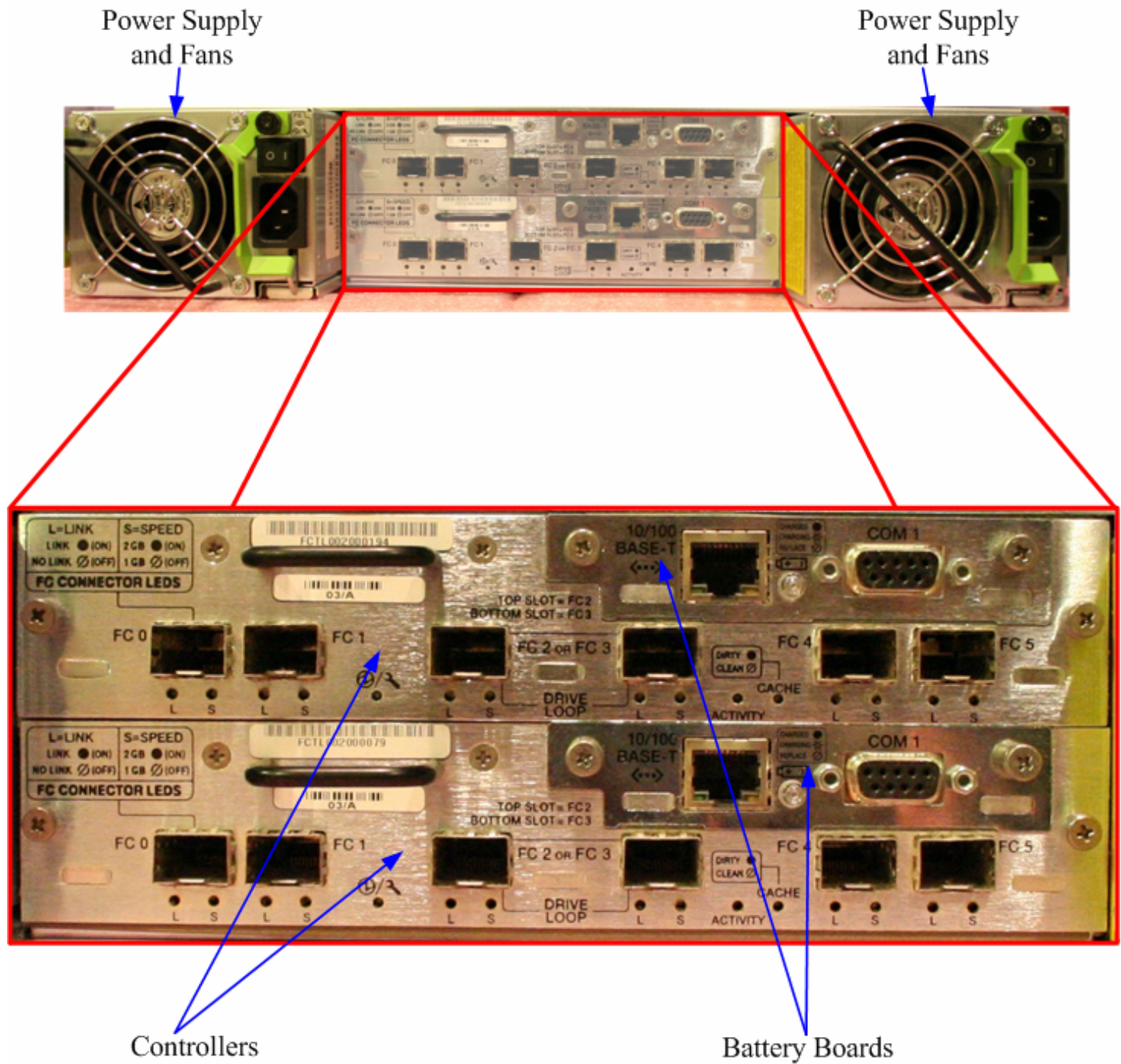
view	Chl	ID	Size(MB)	Speed	LG_DRU	Status	Vendor and Product ID
view	2<3>	0	140009	200MB	0	REBUILD	SEAGATE ST3146807FC
view	2	View drive information					N-LINE SEAGATE ST3146807FC
view	2	Revision Number					9202
view	2	Serial Number					3HYX31DC00007430 07FC
view	2	Disk Capacity (blocks)					286739328 07FC
view	2	Node Name(WWN)					20 00 00 11 C6 BF AD 68 07FC
view	2<3>	Redundant Loop ID					0
view	2<3>	5	140009	200MB	NONE	NEW DRU	SEAGATE ST3146807FC
view	2<3>	6	140009	200MB	NONE	NEW DRU	SEAGATE ST3146807FC
view	2<3>	7	140009	200MB	NONE	NEW DRU	SEAGATE ST3146807FC

Esc:Exit !Ctrl+L:Refresh Screen

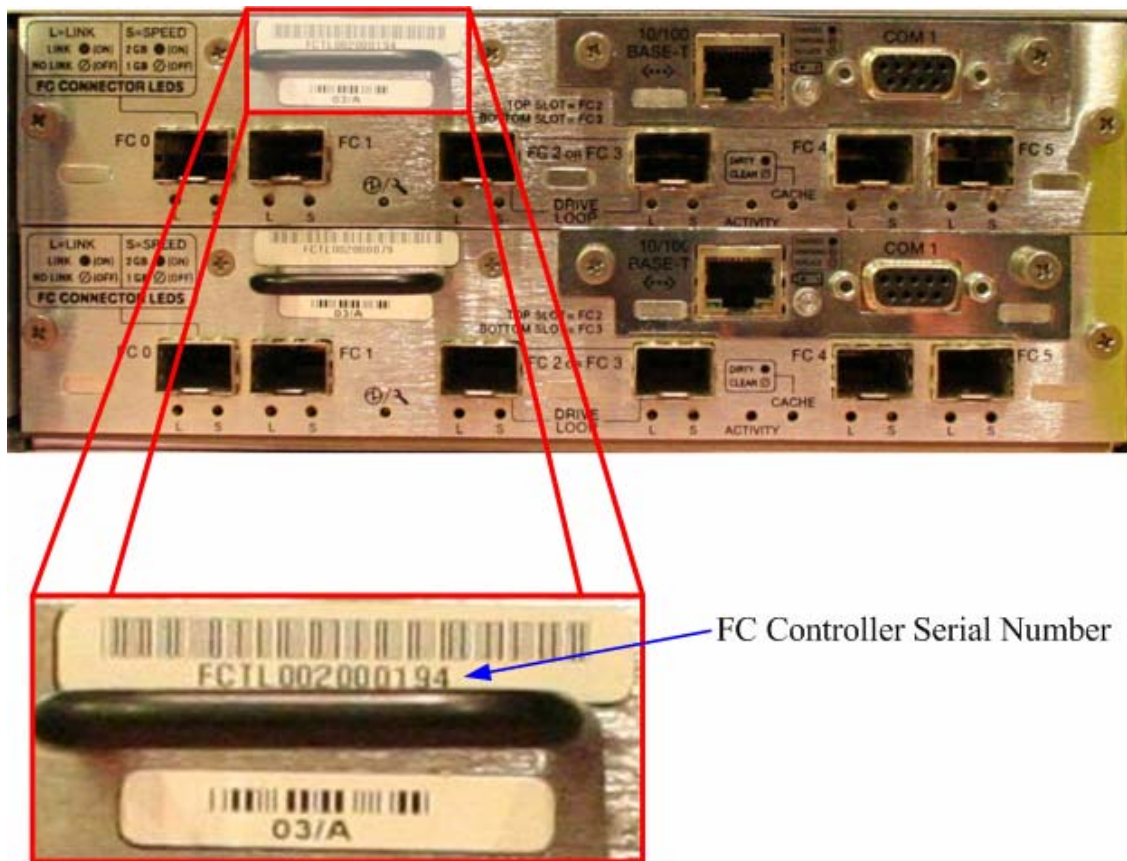
FC Disk Drive Serial Number

Note: No FRU information Serial Number only.

Rear View of SANnet II 200 FC RAID Unit



Locating a Controller serial number



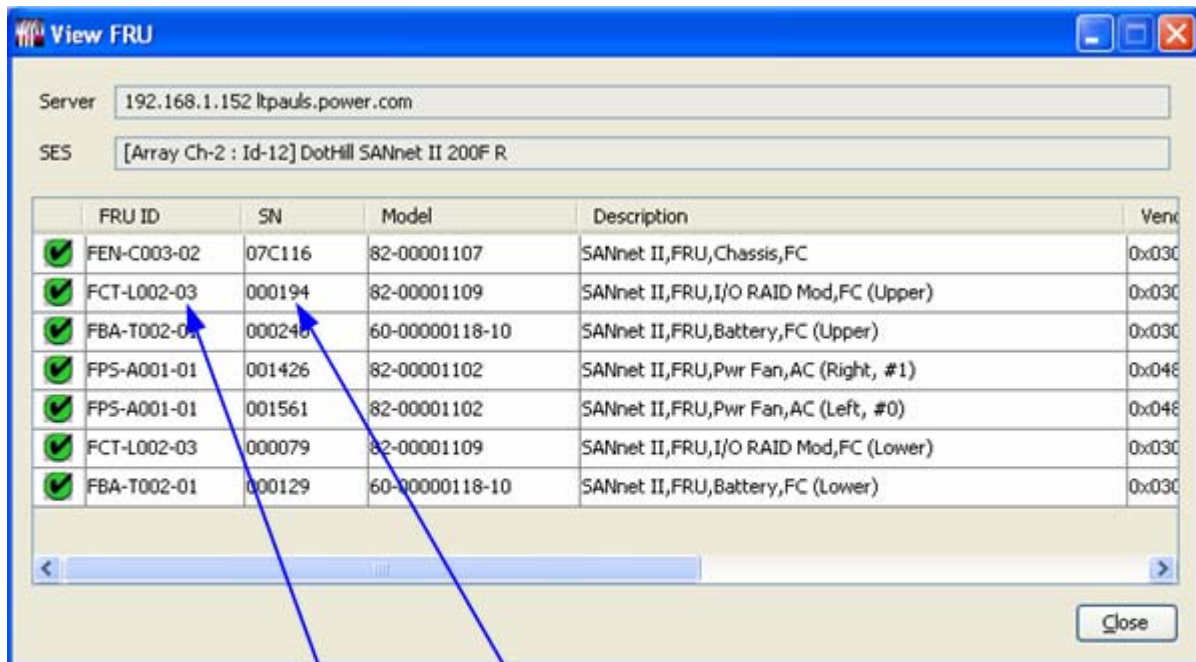
Using SCCLI 2.1.1 to locate Controller serial number

Output will be of all FRU's -Serial Number in Bold Red text – Sample is only of the Controller fru.

Note: 000194 are the same last six numbers of the Serial Number from the physical Controller view.

```
sccli> show fru
Name: FC_RAID_IOM
Description: SANnet II,FRU,I/O RAID Mod,FC
Part Number: FCT-L002
Serial Number: 000194
Revision: 03
Manufacturing Date: Fri Sep 19 15:51:44 2003
Manufacturing Location: Milpitas,CA,USAA
Manufacturer JEDEC ID: 0x0301
FRU Location: UPPER FC RAID IOM SLOT
Chassis Serial Number: 07C116
FRU Status: OK
```

Using SANscape to locate Controller serial number



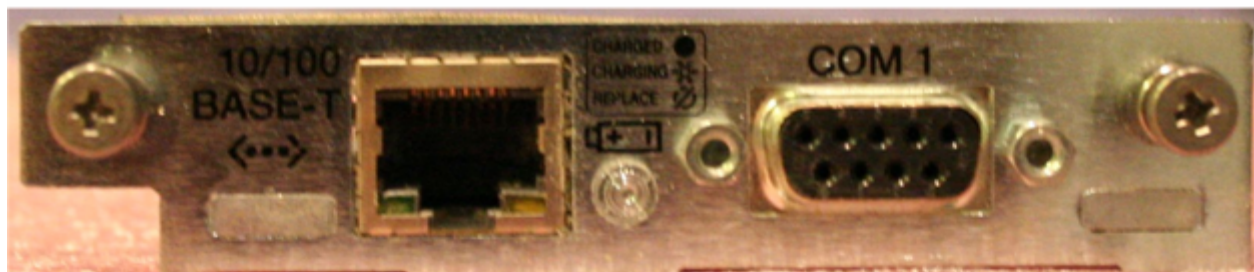
Controller FRU and Serial Number from SANscape

Using HyperTerminal or Telnet to locate Controller serial number

Note: Not available through HyperTerminal or Telnet

Locating a Battery serial number

Front of Battery Board



Bottom of Battery Board



FC Battery Serial Number

Using SCCLI 2.1.1 to locate Battery serial number

Output will be of all FRU's - Serial Number in Bold Red text – Sample is only of the Battery fru.

Note: 000129 are the same last six numbers of the Serial Number from the physical Battery view.

Name: BATTERY_BOARD

Description: SANnet II,FRU,Battery,FC

Part Number: FBA-T002

Serial Number: **000129**

Revision: 01

Manufacturing Date: Tue Aug 12 19:31:38 2003

Manufacturing Location: Milpitas,CA,USA

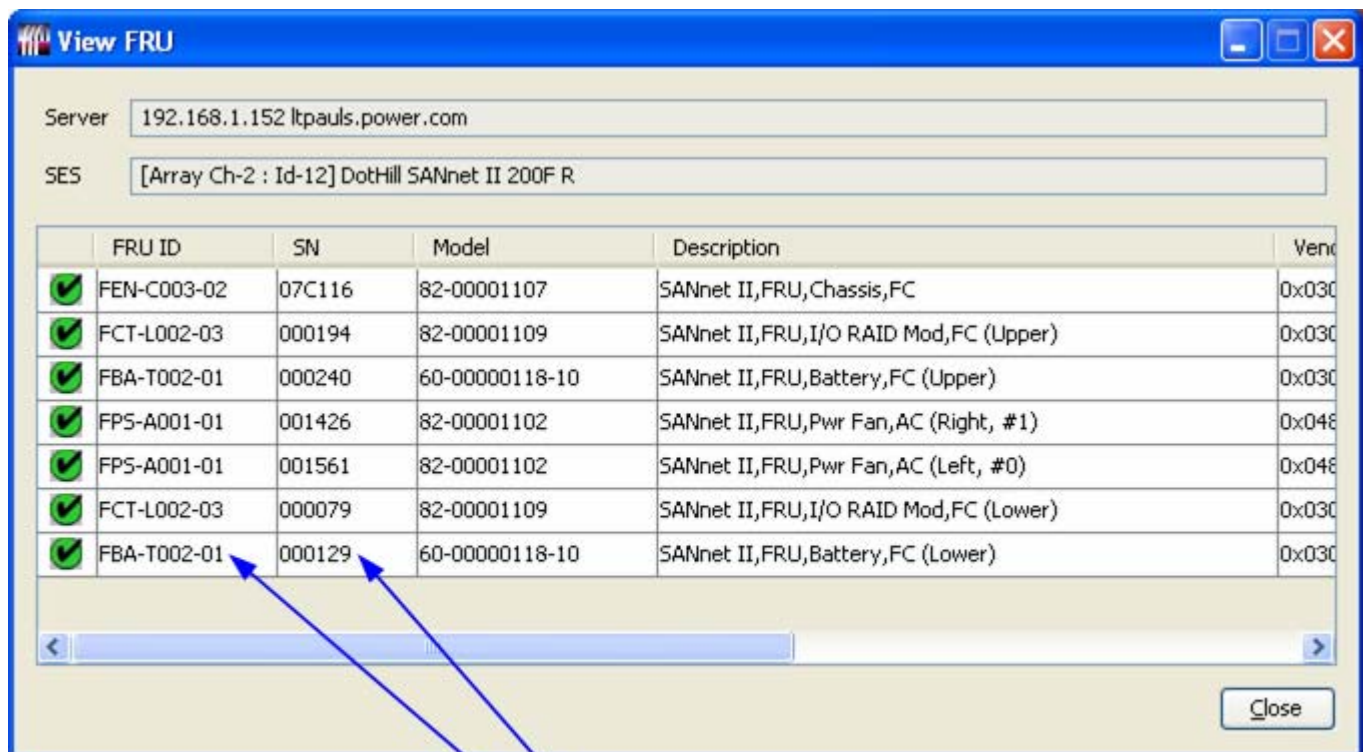
Manufacturer JEDEC ID: 0x0301

FRU Location: LOWER BATTERY BOARD SLOT

Chassis Serial Number: 07C116

FRU Status: OK

Using SANscape to locate Battery serial number



Server: 192.168.1.152 ltpauls.power.com

SES: [Array Ch-2 : Id-12] DotHill SANnet II 200F R

	FRU ID	SN	Model	Description	Vend
✓	FEN-C003-02	07C116	82-00001107	SANnet II,FRU,Chassis,FC	0x030
✓	FCT-L002-03	000194	82-00001109	SANnet II,FRU,I/O RAID Mod,FC (Upper)	0x030
✓	FBA-T002-01	000240	60-00000118-10	SANnet II,FRU,Battery,FC (Upper)	0x030
✓	FPS-A001-01	001426	82-00001102	SANnet II,FRU,Pwr Fan,AC (Right, #1)	0x048
✓	FPS-A001-01	001561	82-00001102	SANnet II,FRU,Pwr Fan,AC (Left, #0)	0x048
✓	FCT-L002-03	000079	82-00001109	SANnet II,FRU,I/O RAID Mod,FC (Lower)	0x030
✓	FBA-T002-01	000129	60-00000118-10	SANnet II,FRU,Battery,FC (Lower)	0x030

Close

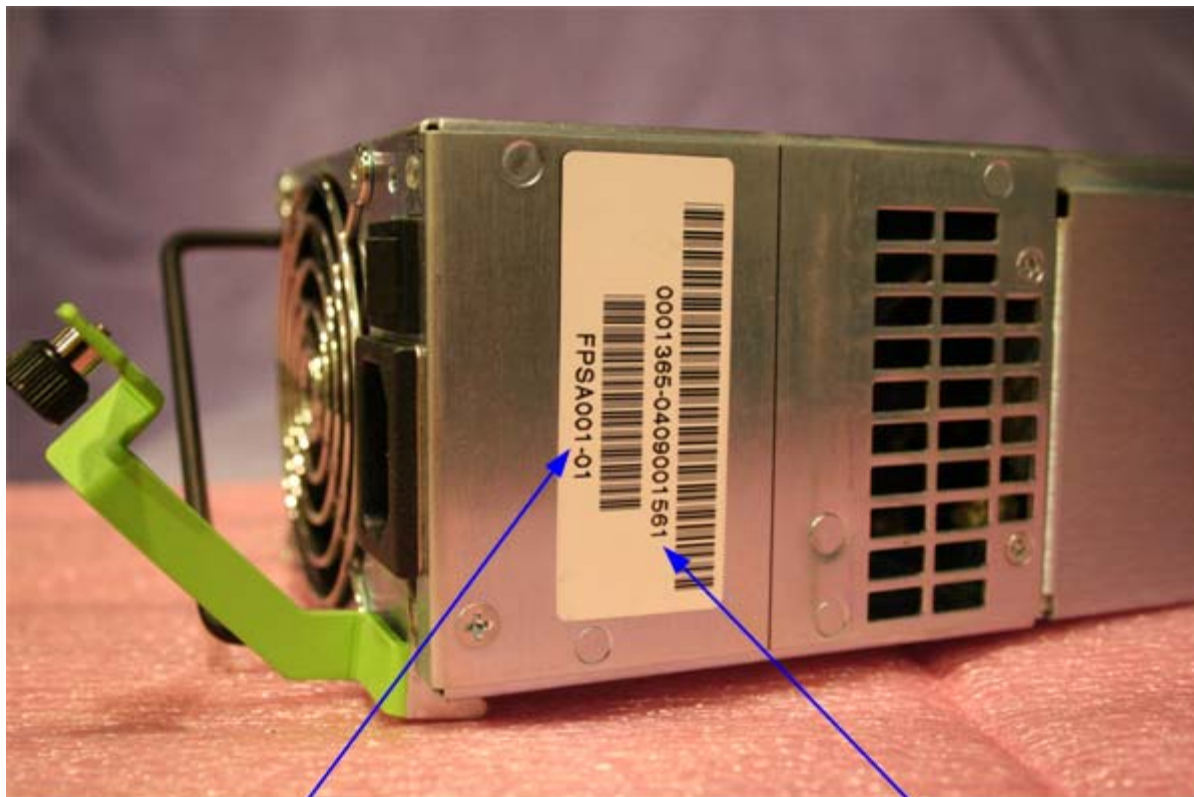
FC Battery Serial Number

Using HyperTerminal or Telnet to locate Battery serial number

Note: Not available through HyperTerminal or Telnet

Locating a Power Supply serial number

Note: The Part Number and Serial Number are located on the right side of each power supply. If the right power supply or fans are bad and the unit is rack mounted you will need to pull the power supply out to get the serial number for physical inspection. Otherwise you can use one of the optional software packages.



Power Supply Part Number

Power Supply Serial Number

Using SCCLI 2.1.1 to locate Power Supply serial number

Output will be of all FRU's - Serial Number in Bold Red text – Sample is only of the Power Supply fru.

Note: 001561 are the same last six alpha-numeric of the Serial Number from the physical Power Supply view.

```
sccli> show fru
```

Name: AC_POWER_SUPPLY

Description: SANnet II,FRU,Pwr Fan,AC

Part Number: FPS-A001

Serial Number: **001561**

Revision: 01

Manufacturing Date: Sat Feb 28 15:07:19 2004

Manufacturing Location: Irvine California, USA

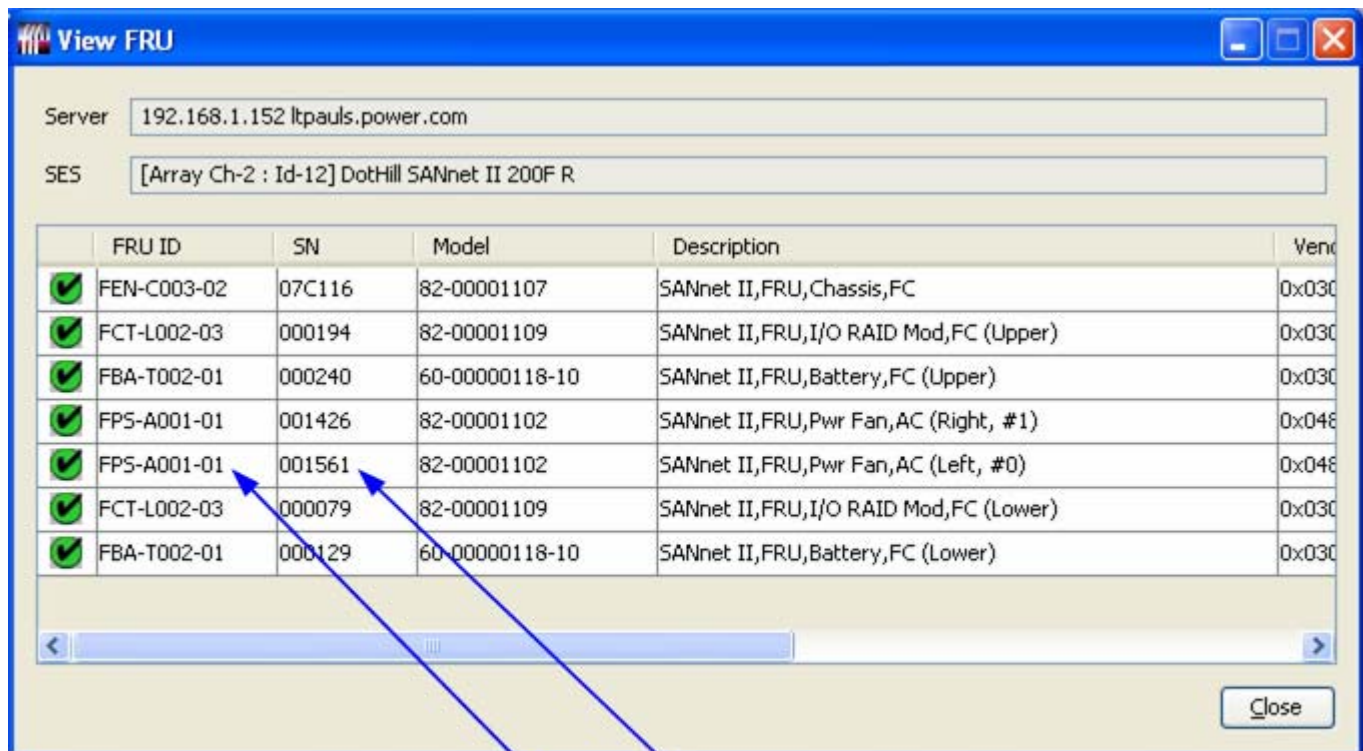
Manufacturer JEDEC ID: 0x048F

FRU Location: AC PSU SLOT #0 (LEFT)

Chassis Serial Number: 07C116

FRU Status: OK

Using SANscape to locate Power Supply serial number



	FRU ID	SN	Model	Description	Vendor
✓	FEN-C003-02	07C116	82-00001107	SANnet II,FRU,Chassis,FC	0x030
✓	FCT-L002-03	000194	82-00001109	SANnet II,FRU,I/O RAID Mod,FC (Upper)	0x030
✓	FBA-T002-01	000240	60-00000118-10	SANnet II,FRU,Battery,FC (Upper)	0x030
✓	FPS-A001-01	001426	82-00001102	SANnet II,FRU,Pwr Fan,AC (Right, #1)	0x048
✓	FPS-A001-01	001561	82-00001102	SANnet II,FRU,Pwr Fan,AC (Left, #0)	0x048
✓	FCT-L002-03	000079	82-00001109	SANnet II,FRU,I/O RAID Mod,FC (Lower)	0x030
✓	FBA-T002-01	000129	60-00000118-10	SANnet II,FRU,Battery,FC (Lower)	0x030

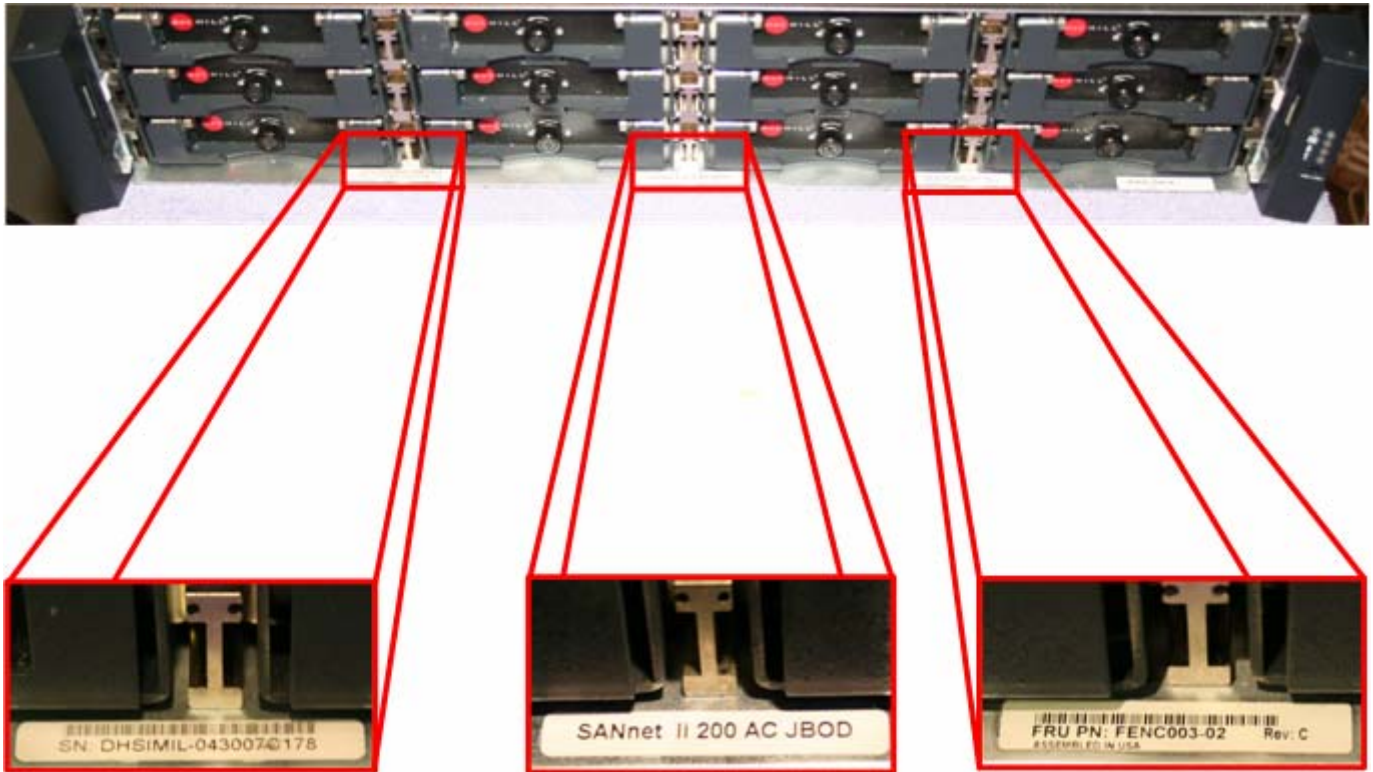
Power Supply FRU and Serial Number

Using HyperTerminal or Telnet to locate Power Supply serial number

Note: Not available through HyperTerminal or Telnet

SANnet II FC JBOD Information

Locating the JBOD Chassis serial number



S/N: DHSIMIL-043007C178

SANnet II 200 AC JBOD

P/N: FENC003-02

Using SCCLI 2.1.1 to locate JBOD Chassis serial number

Output will be of all FRU's - Serial Number in Bold Red text – Sample is only of the JBOD Chassis fru.

Note: 07C178 are the same last six alpha-numeric of the Serial Number from the physical JBOD Chassis view.

Name: FC_CHASSIS_BKPLN

Description: SANnet II,FRU,Chassis,FC

Part Number: FEN-C003

Serial Number: **07C178**

Revision: 02

Manufacturing Date: Wed May 12 05:31:37 2004

Manufacturing Location: Penang,Malaysia

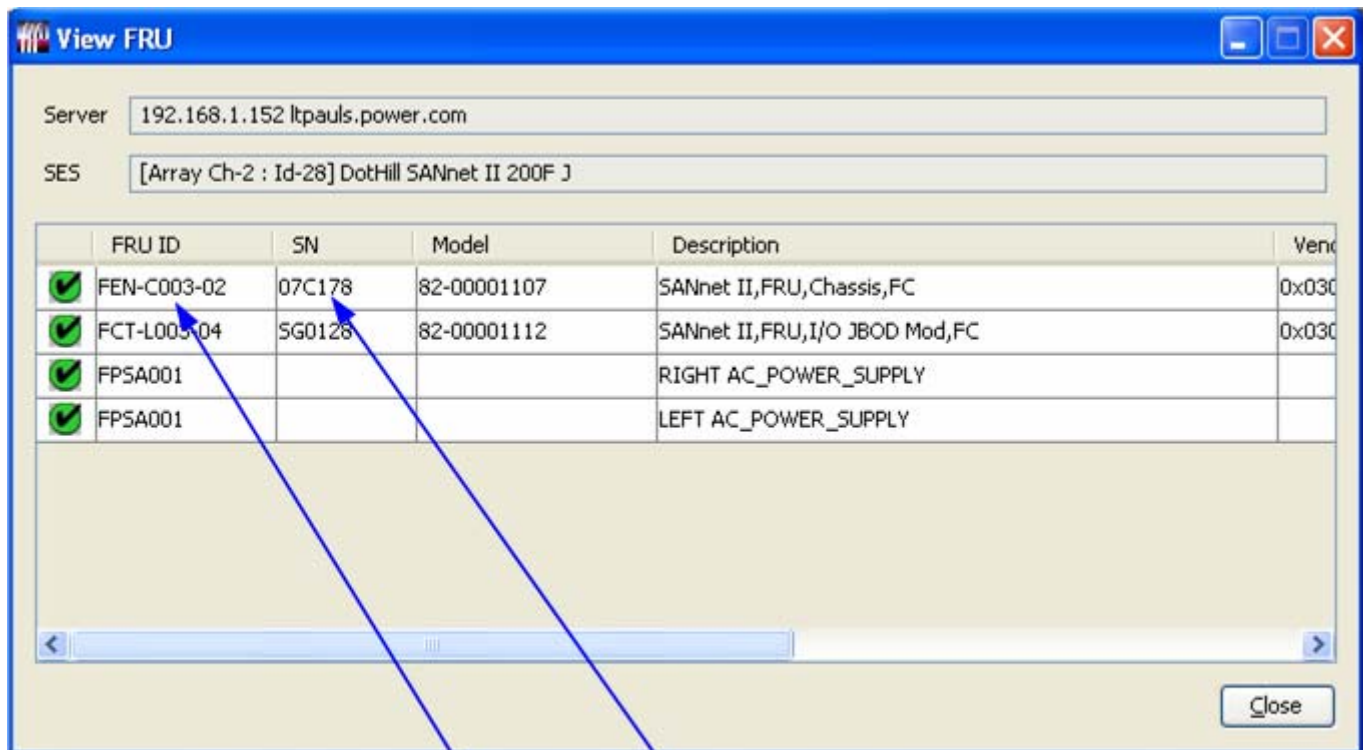
Manufacturer JEDEC ID: 0x0301

FRU Location: FC MIDPLANE SLOT

Chassis Serial Number: 07C178

FRU Status: OK

Using SANscape to locate JBOD Chassis serial number

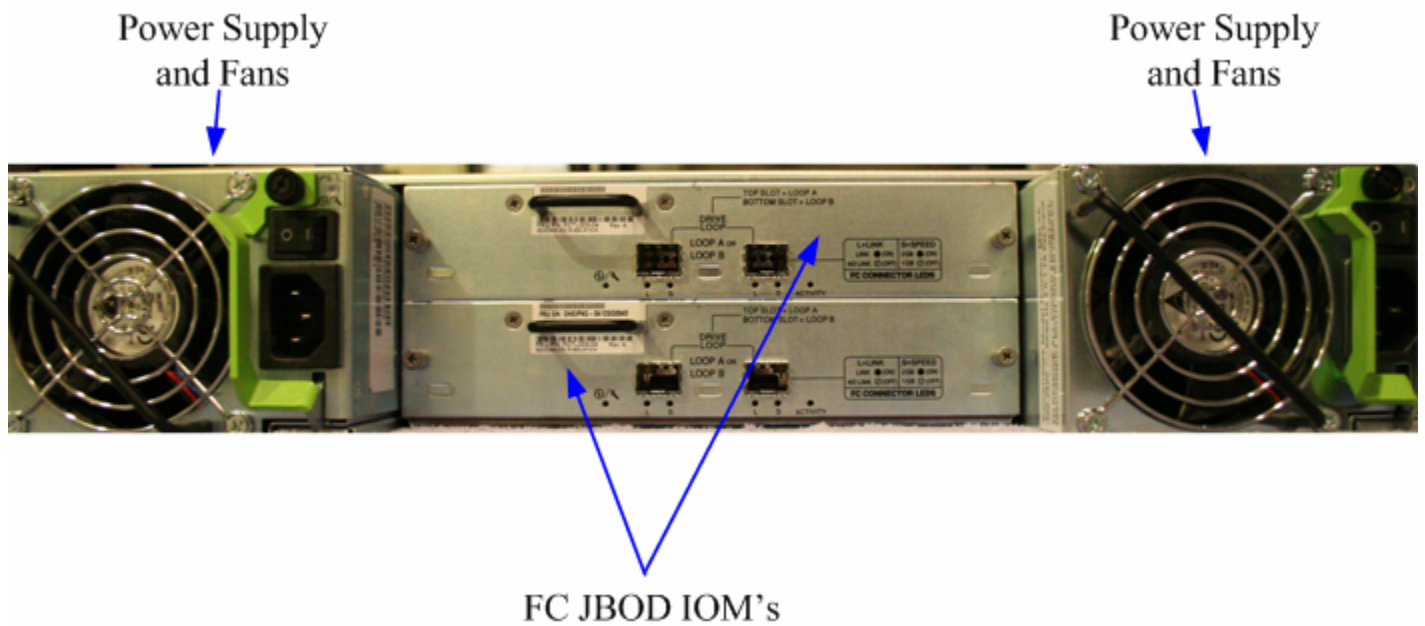


JBOD Chassis FRU and Serial Number from SANscape

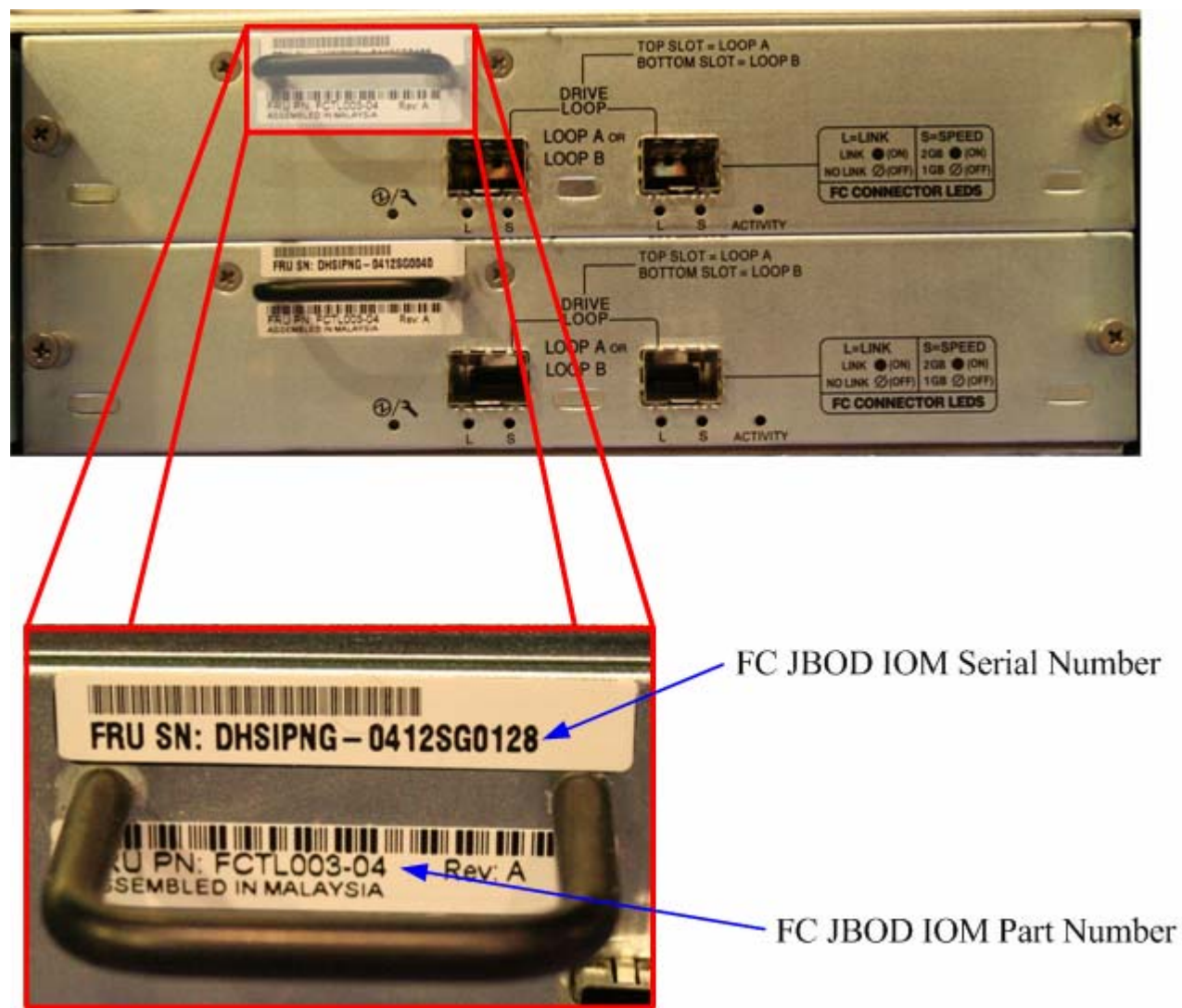
Using HyperTerminal or Telnet to locate JBOD Chassis serial number

Note: Not available through HyperTerminal or Telnet

Rear View of the SANnet II FC JBOD



Locating the JBOD IOM serial number



Using SCCLI 2.1.1 to locate JBOD IOM serial number

Output will be of all FRU's - Serial Number in Bold Red text – Sample is only of the Power Supply fru.

Note: SG0128 are the same last six alpha-numeric of the Serial Number from the physical Power Supply view.

```
scli> show fru
Name: FC_JBOD_IOM
Description: SANnet II,FRU,I/O JBOD Mod,FC
Part Number: FCT-L003
Serial Number: SG0128
Revision: 04
Manufacturing Date: Fri Jul 23 04:49:16 2004
Manufacturing Location: Milpitas California, USA
Manufacturer JEDEC ID: 0x0301
FRU Location: UPPER FC JBOD IOM SLOT
Chassis Serial Number: 07C178
FRU Status: OK
```

Using SANscape to locate JBOD IOM serial number

	FRU ID	SN	Model	Description	Vendor
✓	FEN-C003-02	07C178	82-00001107	SANnet II,FRU,Chassis,FC	0x0301
✓	FCT-L003-04	SG0128	82-00001112	SANnet II,FRU,I/O JBOD Mod,FC	0x0301
✓	FPSA001			RIGHT AC_POWER_SUPPLY	
✓	FPSA001			LEFT AC_POWER_SUPPLY	

JBOD IOM FRU and Serial Number from SANscape

Using HyperTerminal or Telnet to locate JBOD IOM serial number

Note: Not available through HyperTerminal or Telnet

Locating a Power Supply serial number (For all of SANnet II Family)

Please see pages 15, 16 and 17.