

Configuration Guide

CMOS Values

Capacity	120MB	170MB	210MB
Cylinders	814	968	873
Heads	9	10	13
Sectors	32	34	36
Write Precomp	65535	65535	65535
Landing Zone	814	968	873

Note on Write Pre-compensation:

The Quantum ProDrive series drive does not require write pre-compensation, your CMOS setting should be set to reflect that this feature is not enabled. If the setting of 'none' is not present, the value 65535 is a number that the BIOS will accept to disable this feature.

Jumper Settings

Single Drive	DS only
Master Drive	DS only
Slave Drive	No jumpers

ATA Configuration Guide

CMOS Values

Capacity	127MB	170MB	210MB
Cylinders	919	1011	723
Heads	16	15	15
Sectors	17	22	38
Write Precomp	65535	65535	65535
Landing Zone	919	1011	723

Capacity	340MB	420MB
Cylinders	1011	1010
Heads	15	16
Sectors	44	51
Write Precomp	65535	65535
Landing Zone	1011	1010

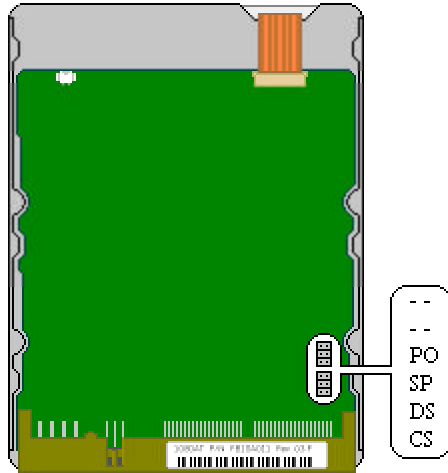
Note on Write Pre-compensation:

The Quantum LPS series drive does not require write pre-compensation, your CMOS setting should be set to reflect that this feature is not enabled. If the setting of 'none' is not present, the value 65535 is a number that the BIOS will accept to disable this feature.

Jumper Settings

Single Drive	DS only
Master Drive	DS only
Slave Drive	No jumpers

LPS™ 270/540



ATA Configuration Guide

CMOS Values

Capacity	270MB	540MB
Cylinders	944	1120
Heads	14	16
Sectors	40	59
Write Precomp	65535	65535
Landing Zone	944	1120

Note on Write Pre-compensation:

The Quantum LPS series drive does not require write pre-compensation, your CMOS setting should be set to reflect that this feature is not enabled. If the setting of 'none' is not present, the value 65535 is a number that the BIOS will accept to disable this feature.

Jumper Settings

Single Drive	DS only
Master Drive	DS only
Slave Drive	No jumpers