



Expansion SSD User Manual

© 2021 Seagate Technology LLC. All rights reserved. Seagate, Seagate Technology, the Spiral logo, and LaCie logo are trademarks or registered trademarks of Seagate Technology LLC or one of its affiliated companies in the United States and/or other countries. FireCuda is either a trademark or registered trademark of Seagate Technology LLC or one of its affiliated companies in the United States and/or other countries. When referring to drive capacity, one gigabyte, or GB, equals one billion bytes and one terabyte, or TB, equals one thousand billion bytes. Your computer's operating system may use a different standard of measurement and report a lower capacity. In addition, some of the listed capacity is used for formatting and other functions and will not be available for data storage. Quantitative usage examples for various applications are for illustrative purposes. Actual quantities will vary based on various factors, including file size, file format, features, and application software. The export or re-export of hardware or software containing encryption may be regulated by the U.S. Department of Commerce, Bureau of Industry and Security (for more information, visit www.bis.doc.gov) and controlled for import and use outside of the U.S. Actual data rates may vary depending on operating environment and other factors. Complying with all applicable copyright laws is the responsibility of the user. All coded instruction and program statements contained herein is, and remains copyrighted works and confidential proprietary information of Seagate Technology LLC or its affiliates. Any use, derivation, dissemination, reproduction, or any attempt to modify, reproduce, distribute, disclose copyrighted material of Seagate Technology LLC, for any reason, in any manner, medium, or form, in whole or in part, if not expressly authorized, is strictly prohibited. Seagate reserves the right to change, without notice, product offerings or specifications.

Seagate Technology LLC
47488 Kato Road
Fremont, CA 94538
USA



Click here to access an up-to-date online version
of this document. You will also find the most recent content as well as expandable illustrations, easier navigation, and search capability.

The Netherlands

Seagate Technology NL B.V. (UK Branch)

Jubilee House, Globe Park, 3rd Ave

Marlow SL7 1EY

UK

Seagate Singapore International Headquarters Pte. Ltd.

90 Woodlands Avenue 7

Singapore 737911

Contents

1	Welcome	3
	Box content	3
	Minimum system requirements	3
	• Ports	3
	• Operating system	3
	• Minimum free disk space	3
2	Getting Started	4
	Connect the USB cable	4
	Register Expansion SSD	4
	• Start here	5
	• Register your device	5
	Optimizing Expansion SSD performance	5
3	Frequently Asked Questions	7
	All users	7
	• Problem: My file transfers are too slow	7
	• Problem: I have an older computer with USB 2.0 ports	7
	• Problem: I must use a USB hub for my USB devices	7
	• Problem: The provided USB cables are too short	8
	• Problem: I'm receiving file transfer error messages	8
	Windows	8
	• Problem: The device icon doesn't appear in Computer	8
	Mac	9
	• Problem: The device icon does not appear on my desktop	9
4	Regulatory Compliance	10
	China RoHS	10
	Taiwan RoHS	11

Welcome

Box content

- Seagate® Expansion SSD
- USB-C to USB-C cable
- USB-C to USB-A cable
- Quick start guide

Minimum system requirements

Ports

You can connect your Seagate device to a computer with a USB-C or USB-A port.

This device supports connections to computer ports that are USB 3.0 and higher.

Operating system

Go to [Operating System Requirements for Seagate Hardware & Software](#).

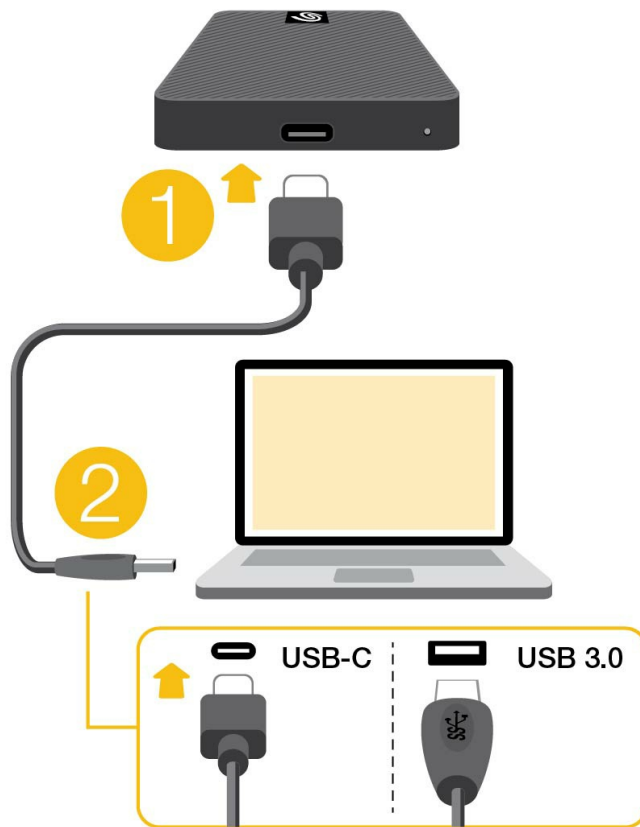
Minimum free disk space

600MB recommended.

Getting Started

Connect the USB cable

Use the USB-C to USB-C cable to connect Expansion SSD to your computer's USB-C port. If your computer doesn't have a USB-C port, use the USB-C to USB-A cable to connect Expansion SSD to a USB-A port.



The computer port you connect to must support USB 3.0 or higher.

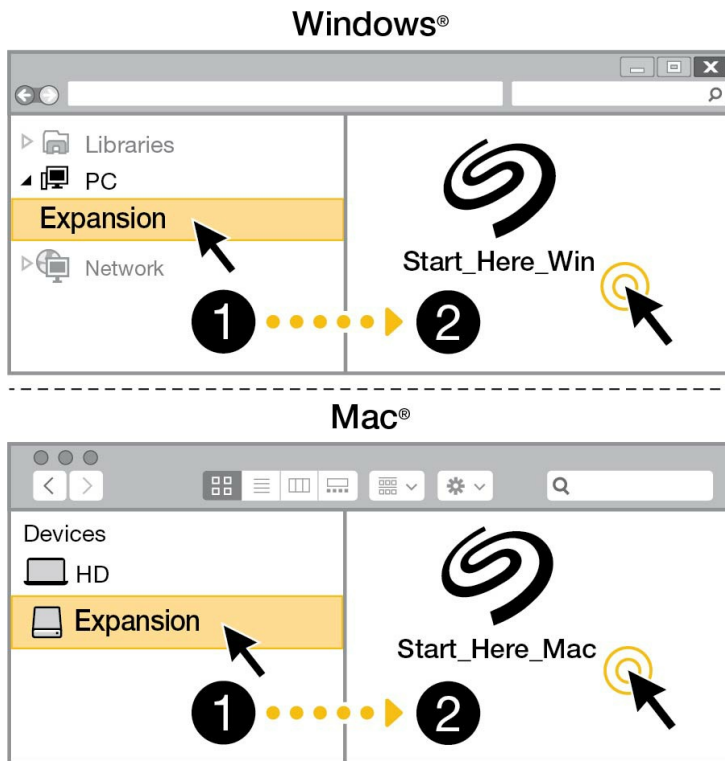
Register Expansion SSD

Get the most from your drive with easy access to information and support.



Your computer must be connected to the internet to register your device.

Start here



Using a file manager such as Finder or File Explorer, open Expansion SSD and launch [Start Here Win](#) or [Start Here Mac](#).

Register your device

Register

I have read and agree to...
 Terms and Conditions
 Privacy Statement
 Optional Offers

Enter your information and click [Register](#).

Optimizing Expansion SSD performance

Some external SSD drives may experience slower performance if large amounts of data are copied all at once. This occurs when the high-speed cache is filled with no pauses to allow the cache to clear. To maintain optimal performance, periodically allow the cache to optimize the drive by doing the following:

- Leave Expansion SSD connected to your computer for an hour or more, during which Expansion SSD is not performing any read/write activities (the drive is idle).
- Make sure the computer and drive are awake. If your computer is set to sleep, you may need to take extra steps to keep the computer awake and allow the cache to clear.
- If Expansion SSD is connected while you work or play games from the computer's internal drive, the cache will have time to clear and performance will be optimized.

For more details, see the following knowledge base article from Seagate support: [Optimizing External SSD drive write performance](#).

Frequently Asked Questions

For help setting up and using Seagate Expansion SSD, review the frequently asked questions below. For additional support resources, go to [Seagate customer support](#).

All users

Problem: My file transfers are too slow

Q: Are both ends of the USB cable firmly attached?

A: Review troubleshooting tips for cable connections below:

- Check both ends of the USB cable and make sure that they are fully seated in their respective ports.
- Try disconnecting the cable, waiting 10 seconds, and then reconnecting it.
- Try a different USB cable.

Q: Is the device connected to a Hi-Speed USB 2.0 port on your computer or hub?

A: If your device is connected to a Hi-Speed 2.0 port or hub, the inferior performance is normal. Seagate Expansion SSD performance will improve when it is connected to a SuperSpeed USB 3.0 port. Otherwise, the device operates at slower USB transfer rates.

Q: Are there other USB devices connected to the same port or hub?

A: Disconnect other USB devices and see if the device's performance improves.

Problem: I have an older computer with USB 2.0 ports

Q: Will my device's USB 3.0 cable work with my computer's USB 2.0 port?

A: Yes, the cable end that plugs into the computer (USB Type A) is compatible with both USB 3.0 and USB 2.0. However, the transfer rates are much slower with USB 2.0.

Problem: I must use a USB hub for my USB devices

Q: Can I use my device with a USB hub?

A: Yes, the device can be connected to a USB hub. If you use a hub and encounter detection problems, slower than normal transfer rates, random disconnection from your computer or other unusual issues, try connecting the device directly to the computer's USB port.

Some USB hubs are less than efficient with power management, which can be problematic for connected devices. In such a case, consider trying a powered USB hub that includes a power cable.

Please note that USB 2.0 hubs limit your device's transfer rates to USB 2.0 speeds.

Problem: The provided USB cables are too short

Q: Can I use my device with a longer cable?

A: Yes, provided it is certified according to USB standards. However, Seagate recommends using the cable shipped with your device for the best results. If you use a longer cable and experience problems with detection, transfer rates or disconnection, use the original cable included with your device.

Problem: I'm receiving file transfer error messages

Q: Did you get an "Error -50" message while copying to a FAT32 volume?

A: When copying files or folders from a computer to a FAT32 volume, certain characters in the names cannot be copied. These characters include, but are not limited to: ? < > / \ :

Check your files and folders to ensure that these characters are not in the names.

If this is a recurring problem or you cannot find files with incompatible characters, consider reformatting the drive to NTFS (Windows users) or HFS+ (Mac users). See [Optional Formatting and Partitioning](#).

Q: Did you get an error message telling you that the drive has been disconnected when coming out of sleep mode?

A: Ignore this message since the drive remounts on the desktop despite the pop-up. Seagate drives conserve power by spinning down when you set your computer to sleep mode. When the computer awakes from sleep mode, the drive may not have enough time to spin up, causing the pop-up to appear.

Windows

Problem: The device icon doesn't appear in Computer

Q: Is the device listed in Device Manager?

A: All drives appear in at least one place in Device Manager.

Type Device Manager in Search to launch it. Look in the Disk Drives section and, if necessary, click the Plus (+) icon to view the full list of devices. If you're uncertain that your drive is listed, safely unplug it and then reconnect it. The entry that changes is your Seagate device.

Q: Is your device listed next to an unusual icon?

A: Windows Device Manager usually provides information about failures with peripherals. While the Device Manager can assist with troubleshooting most problems, it may not display the exact cause or provide a precise solution.

An unusual icon next to the device can reveal a problem. For example, instead of the normal icon based on the type of device, it has an exclamation point, question mark or an X. Right click this icon and then choose Properties. The General tab provides a potential reason why the device is not working as expected.

Mac

Problem: The device icon does not appear on my desktop

Q: Is your Finder configured to hide hard drives on the desktop?

A: Go to Finder and then check [Preferences | General tab > | Show these items on the desktop](#). Confirm that [Hard Disks](#) is selected.

Q: Is your device mounting in the operating system?

A: Open Disk Utility at [Go | Utilities | Disk Utility](#). If the device is listed in the left-hand column, check your Finder preferences to see why it is not displayed on the desktop (review the question above).

Q: Does your computer's configuration meet the minimum system requirements for use with this device?

A: Refer to the product packaging for the list of supported operating systems.

Regulatory Compliance

Product Name Seagate Expansion SSD

Regulatory Model Number SRD0FV6

China RoHS



China RoHS 2 refers to the Ministry of Industry and Information Technology Order No. 32, effective July 1, 2016, titled Management Methods for the Restriction of the Use of Hazardous Substances in Electrical and Electronic Products. To comply with China RoHS 2, we determined this product's Environmental Protection Use Period (EPUP) to be 20 years in accordance with the Marking for the Restricted Use of Hazardous Substances in Electronic and Electrical Products, SJT 11364-2014.

中国 RoHS 2 是指 2016 年 7 月 1 日起施行的工业和信息化部令第 32 号“电力电子产品限制使用有害物质管理办法”。为了符合中国 RoHS 2 的要求，我们根据“电子电气产品有害物质限制使用标识”(SJT 11364-2014) 确定本产品的环保使用期 (EPUP) 为 20 年。

部件名称 Part Name	有害物质 Hazardous Substances					
	铅 (Pb)	汞 (Hg)	镉 (Cd)	六价铬 (Cr ⁺⁶)	多溴联苯 (PBB)	多溴二苯醚 (PBDE)
固态驱动器 SSD	X	O	O	O	O	O
外接硬盘印刷电路板 Bridge PCBA	X	O	O	O	O	O
电源(如果提供) Power Supply (if provided)	X	O	O	O	O	O
接口电缆(如果提供) Interface cable (if provided)	X	O	O	O	O	O
其他外壳组件 Other enclosure components	O	O	O	O	O	O

本表格依据 SJ/T 11364 的规定编制。

This table is prepared in accordance with the provisions of SJ/T 11364-2014

O: 表示该有害物质在该部件所有均质材料中的含量均在 GB/T 26572 规定的限量要求以下。

O: Indicates that the hazardous substance contained in all of the homogeneous materials for this part is below the limit requirement of GB/T26572.

X: 表示该有害物质至少在该部件的某一均质材料中的含量超出 GB/T 26572 规定的限量要求。

X: Indicates that the hazardous substance contained in at least one of the homogeneous materials used for this part is above the limit requirement of GB/T26572.

Taiwan RoHS

Taiwan RoHS refers to the Taiwan Bureau of Standards, Metrology and Inspection's (BSMI's) requirements in standard CNS 15663, Guidance to reduction of the restricted chemical substances in electrical and electronic equipment. Beginning on January 1, 2018, Seagate products must comply with the "Marking of presence" requirements in Section 5 of CNS 15663. This product is Taiwan RoHS compliant. The following table meets the Section 5 "Marking of presence" requirements.

台灣RoHS是指台灣標準局計量檢驗局(BSMI)對標準CNS15663要求的減排電子電氣設備限用化學物質指引。從2018年1月1日起, Seagate 產品必須符合CNS15663第5節「含有標示」要求。本產品符合台灣RoHS。下表符合第5節「含有標示」要求。

產品名稱: 外接式固態硬碟, 型號: SRD0FV6		Product Name: Expansion SSD, Model: SRD0FV6					
單元 Unit		限用物質及其化學符號			Restricted Substance and its chemical symbol		
		鉛 (Pb)	汞 (Hg)	鎘 (Cd)	六價鉻 (Cr ⁶⁺)	多溴聯苯 (PBB)	多溴二苯醚 (PBDE)
固態驅動器	SSD	—	○	○	○	○	○
外接硬盤印刷電路板	Bridge PCBA	—	○	○	○	○	○
電源 (如果提供)	Power Supply (if provided)	—	○	○	○	○	○
傳輸線材 (如果提供)	Interface cable (if provided)	—	○	○	○	○	○
其他外殼組件	Other enclosure components	○	○	○	○	○	○

備考 1. “○” 係指該項限用物質之百分比含量未超出百分比含量基準值。
 Note 1. “○” indicates that the percentage content of the restricted substance does not exceed the percentage of reference value of presence.

備考 2. “—” 係指該項限用物質為排除項目。
 Note 2. “—” indicates that the restricted substance corresponds to the exemption.