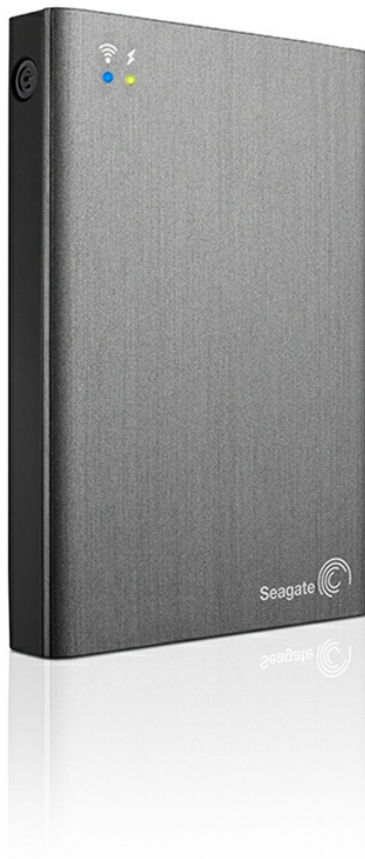




# Seagate Wireless Plus User Manual

---



---

Model: 1AYBA4



**Click here to access an up-to-date online version** of this document. You will also find the most recent content as well as expandable illustrations, easier navigation, and search capability.

# Contents

<b>1</b>	<b>Regulatory Compliance</b>	<b>3</b>
	FCC Class B Information	3
	IMPORTANT NOTE: FCC Radiation Exposure Statement	3
	Industry Canada	4
	Battery Safety	6
<b>2</b>	<b>Introduction</b>	<b>7</b>
	What's in the Box?	7
	Product Specifications	7
	• Supported Devices	7
	• Supported Web Browsers	8
	• Supported File Types	8
	• Hardware Specifications	8
<b>3</b>	<b>Wireless Plus Setup</b>	<b>10</b>
	Installing the Seagate Media app	10
	Establishing a Wireless Connection	10
	Loading Media onto the Seagate Wireless Plus	11
	Setting a Password for Your Seagate Wireless Plus	12
	Connecting to the Internet Through Your Seagate Wireless Plus	12
	Streaming Media	13
<b>4</b>	<b>Using Wireless Plus</b>	<b>14</b>
	Understanding Wi-Fi Mode	14
	• Connecting the device to your computer	14
	• Disconnecting the device from your computer	15
	Working with the Battery	15
	• Charging the Battery	15
	• Recycling the Battery	16
	Resetting Your Device to Its Factory Settings	16
<b>5</b>	<b>Getting Help</b>	<b>17</b>
	Finding More Help	17
	Common Problems and Solutions	17

# Regulatory Compliance

## FCC Class B Information

This equipment has been tested and found to comply with the limits for a Class B digital device, pursuant to Part 15 of the FCC Rules. These limits are designed to provide reasonable protection against harmful interference in a residential installation. This equipment generates, uses and can radiate radio frequency energy and, if not installed and used in accordance with the instructions, may cause harmful interference to radio communications. However, there is no guarantee that interference will not occur in a particular installation. If this equipment does cause harmful interference to radio or television reception, which can be determined by turning the equipment off and on, the user is encouraged to try to correct the interference by one of the following measures:

- Reorient or relocate the receiving antenna.
- Increase the separation between the equipment and receiver.
- Connect the equipment into an outlet on a circuit different from that to which the receiver is connected.
- Consult the dealer or an experienced radio/TV technician for help.

This device complies with Part 15 of the FCC Rules. Operation is subject to the following two conditions: (1) This device may not cause harmful interference, and (2) this device must accept any interference received, including interference that may cause undesired operation.

**FCC Caution:** Any changes or modifications not expressly approved by the party responsible for compliance could void the user's authority to operate this equipment.

## IMPORTANT NOTE: FCC Radiation Exposure Statement

This equipment complies with FCC radiation exposure limits set forth for an uncontrolled environment. This equipment should be installed and operated with minimum distance 20cm between the radiator & your body.

This transmitter must not be co-located or operating in conjunction with any other antenna or transmitter.

The availability of some specific channels and/or operational frequency bands are country dependent and are firmware programmed at the factory to match the intended destination. The firmware setting is not accessible by the end user.

Note to US model owner: To comply with US FCC regulation, the country selection function has been completely removed from all US models. The above function is for non-US models only.

# Industry Canada

This device complies with RSS-210 of the Industry Canada Rules. Operation is subject to the following two conditions: (1) This device may not cause harmful interference, and (2) this device must accept any interference received, including interference that may cause undesired operation.

Ce dispositif est conforme à la norme CNR-210 d'Industrie Canada applicable aux appareils radio exempts de licence. Son fonctionnement est sujet aux deux conditions suivantes: (1) le dispositif ne doit pas produire de brouillage préjudiciable, et (2) ce dispositif doit accepter tout brouillage reçu, y compris un brouillage susceptible de provoquer un fonctionnement indésirable.

**IMPORTANT NOTE:** (For mobile device use)

## Radiation Exposure Statement:

This equipment complies with IC radiation exposure limits set forth for an uncontrolled environment. This equipment should be installed and operated with minimum distance 20cm between the radiator & your body.

**NOTE IMPORTANTE:** (Pour l'utilisation de dispositifs mobiles)

## Déclaration d'exposition aux radiations:

Cet équipement est conforme aux limites d'exposition aux rayonnements IC établies pour un environnement non contrôlé. Cet équipement doit être installé et utilisé avec un minimum de 20 cm de distance entre la source de rayonnement et votre corps.

## Manufacturer's Declaration for CE Certification

Czech	Seagate tímto prohlašuje, že tento Wi-Fi je ve shodě se základními požadavky a dalšími příslušnými ustanoveními směrnice 1999/5/ES.
Danish	Undertegnede Seagate erklærer herved, at følgende udstyr Wi-Fi overholder de væsentlige krav og øvrige relevante krav i direktiv 1999/5/EF.
Dutch	Hierbij verklaart Seagate dat het toestel Wi-F in overeenstemming is met de essentiële eisen en de andere relevante bepalingen van richtlijn 1999/5/EG.
English	Hereby, Seagate declares that this Wi-Fi is in compliance with the essential requirements and other relevant provisions of Directive 1999/5/EC.
Estonian	Käesolevaga kinnitab Seagate seadme Wi-Fi vastavust direktiivi 1999/5/EÜ põhinõuetele ja nimetatud direktiivist tulenevatele teistele asjakohastele sätetele.

German	Hiermit erklärt Seagate, dass sich das Gerät Wi-Fi in Übereinstimmung mit den grundlegenden Anforderungen und den übrigen einschlägigen Bestimmungen der Richtlinie 1999/5/EG befindet.
Greek	ΜΕ ΤΗΝ ΠΑΡΟΥΣΑ Seagate ΔΗΛΩΝΕΙ ΟΤΙ Wi-Fi ΣΥΜΜΟΡΦΩΝΕΤΑΙ ΠΡΟΣ ΤΙΣ ΟΥΣΙΩΔΕΙΣ ΑΠΑΙΤΗΣΕΙΣ ΚΑΙ ΤΙΣ ΛΟΙΠΕΣ ΣΧΕΤΙΚΕΣ ΔΙΑΤΑΞΕΙΣ ΤΗΣ ΟΔΗΓΙΑΣ 1999/5/EK.
Hungarian	Alulírott, Seagate nyilatkozom, hogy a Wi-Fi megfelel a vonatkozó alapvető követelményeknek és az 1999/5/EC irányelv egyéb előírásainak.
Finnish	Seagate vakuuttaa täten että Wi-Fi laitteen tyyppimerkintä]tyyppinen laite on direktiivin 1999/5/EY oleellisten vaatimusten ja sitä koskevien direktiivin muiden ehtojen mukainen.
French	Par la présente Seagate déclare que l'appareil Wi-Fi est conforme aux exigences essentielles et aux autres dispositions pertinentes de la directive 1999/5/CE.
Icelandic	Hér með lýsir Seagate yfir því að Wi-Fi er í samræmi við grunnkröfur og aðrar kröfur, sem gerðar eru í tilskipun 1999/5/EC
Italian	Con la presente Seagate dichiara che questo Wi-Fi è conforme ai requisiti essenziali ed alle altre disposizioni pertinenti stabilite dalla direttiva 1999/5/CE.
Latvian	Ar šo Seagate deklarē, ka Wi-Fi atbilst Direktīvas 1999/5/EK būtiskajām prasībām un citiem ar to saistītajiem noteikumiem.
Lithuanian	Šiuo Seagate deklaruoja, kad šis Wi-Fi atitinka esminius reikalavimus ir kitas 1999/5/EB Direktyvos nuostatas.
Maltese	Hawnhekk Seagate, jiddikjara li dan Wi-Fi mal-ħtiġijiet essenzjali u ma provvedimenti oħrajn relevanti li hemm fid-Dirrettiva 1999/5/EC.
Norwegian	Seagate erklærer herved at utstyret Wi-Fi er i samsvar med de grunnleggende krav og øvrige relevante krav i direktiv 1999/5/EF.
Polish	Niniejszym Seagate oświadcza, że Wi-Fi jest zgodny z zasadniczymi wymogami oraz pozostałymi stosownymi postanowieniami Dyrektywy 1999/5/EC
Portuguese	Seagate declara que este Wi-Fi está conforme com os requisitos essenciais e outras disposições da Directiva 1999/5/CE.
Slovak	Seagate týmto vyhlasuje, že Wi-Fi spĺňa základné požiadavky a všetky príslušné ustanovenia Smernice 1999/5/ES.
Slovenian	Seagate izjavlja, da je ta Wi-Fi v skladu z bistvenimi zahtevami in ostalimi relevantnimi določili direktive 1999/5/ES.
Spanish	Por medio de la presente Seagate declara que el Wi-Fi cumple con los requisitos esenciales y cualesquiera otras disposiciones aplicables o exigibles de la Directiva 1999/5/CE.
Swedish	Härmed intygar Seagate att denna Wi-Fi står i överensstämmelse med de väsentliga egenskapskrav och övriga relevanta bestämmelser som framgår av direktiv 1999/5/EG.

# Battery Safety

This product contains a lithium-ion battery that must be disposed of properly.

Please follow the battery safety items below:

- Do not dismantle, open or shred secondary cells or batteries.
- Do not expose cells or batteries to heat or fire. Avoid storage in direct sunlight.
- Do not short-circuit a cell or a battery. Do not store cells or batteries haphazardly in a box or drawer where they may short-circuit each other or be short-circuited by, other metal objects.
- Do not use any charger other than that specifically provided for use with the equipment.
- Do not use any cell or battery which is not designed for use with the equipment.
- Do not mix cells of different manufacture, capacity, size or type within a device.
- Seek medical advice immediately if a cell or a battery has been swallowed.
- Do not subject cells or batteries to mechanical shock.
- In the event of a cell leaking, do not allow the liquid to come in contact with the skin or eyes. If contact has been made, wash the affected area with copious amounts of water and seek medical advice.
- Keep cells and batteries out of the reach of children.
- Keep cells and batteries clean and dry.
- Secondary cells and batteries need to be charged before use. Always use the correct charger and refer to the manufacturer's instructions or equipment manual for proper charging instructions.
- Do not leave a battery on prolonged charge when not in use.
- After extended periods of storage, it may be necessary to charge and discharge the cells or batteries several times to obtain maximum performance.
- Secondary cells and batteries give their best performance when they are operated at normal room temperature (20°C+5 °C).
- Retain the original product literature for future reference.
- Use only the cell or battery in the application for which it was intended.
- Dispose of properly.

**The Seagate Wireless Plus device is not intended for office use.**

# Introduction

Congratulations on the purchase of your Seagate Wireless Plus. Using this device, you can take your digital media anywhere and stream it to your Wi-Fi-enabled tablet, smartphone, or computer. Imagine listening to your favorite music while hiking through the Swiss Alps. You can do that with the Seagate Wireless Plus.

This guide shows you how to set up your Seagate Wireless Plus so that you can begin enjoying your videos, photos, and music wherever you are.

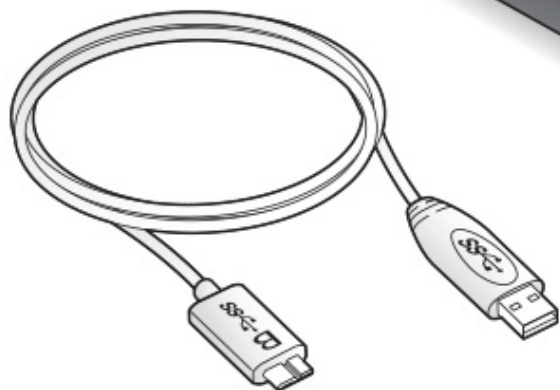
## What's in the Box?

Unpack the box and ensure you have all of these items.

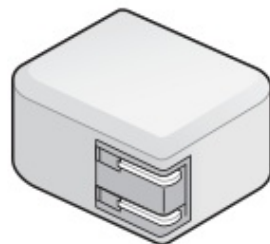
### Seagate Wireless Plus Storage Device



Quick Start Guide



Detachable USB 3.0 Cable



USB Wall Adapter

## Product Specifications

### Supported Devices

- iPad, iPhone, iPod touch running iOS 4 or later
- Android-based tablets and smartphones running Android release 2.1 or later
- Other Wi-Fi-enabled tablets and smartphones
- Windows computer running Windows 8, Windows 7, Windows Vista, or Windows XP
- Mac computer running Mac OS X 10.5.8 or later

## Supported Web Browsers

- Safari 5 or later (Mac OS)
- WebKit (Android)
- Internet Explorer 8 or later (Windows)
- Firefox
- Google Chrome

## Supported File Types

### For iPads

- Video: H.264 video, MPEG-4, Motion-JPEG
- Audio: AAC, MP3, M4a, Audible (formats 2, 3, 4), Apple Lossless, AIFF, WAV
- Documents: Microsoft Office, iWork, PDF
- Certain files supported by third-party apps

### For Laptops, Tablets, and Smartphones

- Any files supported by your device applications

## Hardware Specifications

- Drive Capacity: 1TB  
The Wireless Plus can store over 300 high- definition movies (1.5GB MP4 H.264), 125,000 songs, or 100,000 photos.



**Note:** Quantitative usage examples for various applications are for illustrative purposes. Actual quantities will be based on various factors, including file size, file format, features, and application software.

- SuperSpeed USB 3.0 port (required for USB 3.0 transfer speeds) or USB 2.0 port
- Battery: Non-user replaceable, rechargeable lithium-ion battery
- Battery Life: Up to 10 hours of continuous streaming (1 user); up to 25 hours standby
- Maximum Wi-Fi range: 45 meters (147 feet)
- Drive Format: NTFS  
The Paragon NTFS driver is available to enable read/write access using the Mac OS. The software is available on your Seagate Wireless Plus.





# Wireless Plus Setup

This chapter explains each step of the setup process in more detail than what is described in the

## Installing the Seagate Media app

Use the Seagate Media app on your mobile devices to organize and stream the media stored on the Seagate Wireless Plus.

- On your mobile device, go to the Apple App Store, Google Play Store, or the Amazon website, and then find and install the Seagate Media app.



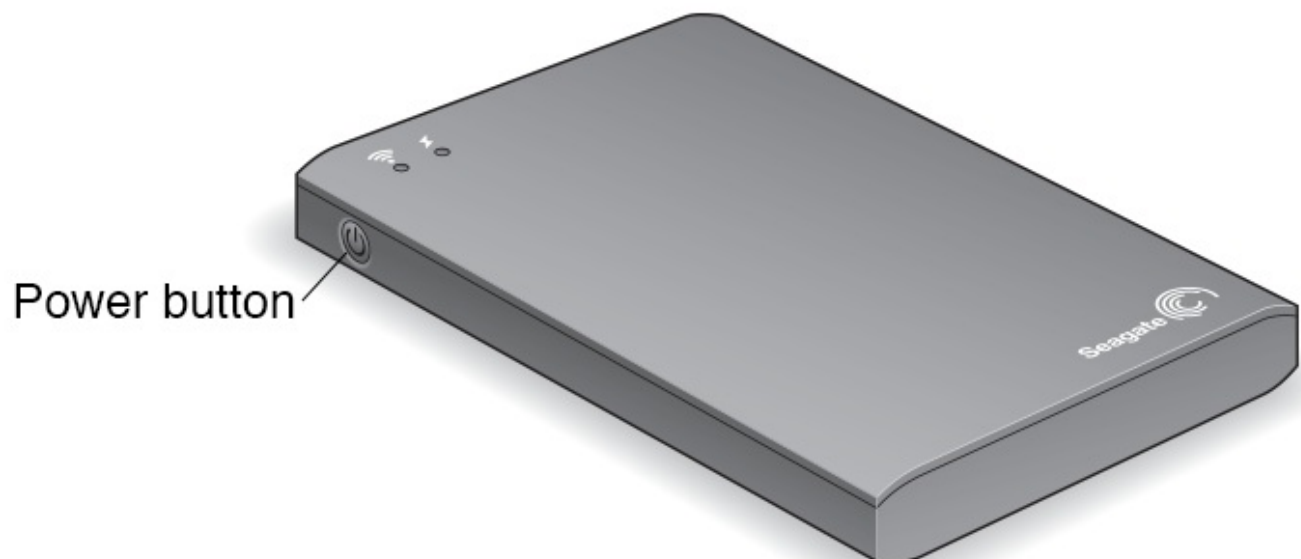
**Note:** The same functionality is available on your computer through a Web browser after it is wirelessly connected to the Seagate Wireless Plus.

## Establishing a Wireless Connection

Your Seagate Wireless Plus comes partially charged and runs for about 45 minutes. Consider fully charging it (see [Charging the Battery](#)) before connecting other devices.

You can wirelessly connect up to eight devices to your Seagate Wireless Plus.

1. Press the power button on the side of the Seagate Wireless Plus.



Power button

The Wi-Fi LED blinks as the device starts up. When the Wi-Fi light is solid blue, your device is Wi-Fi enabled and ready to accept other device connections.

2. Open the network or wireless settings on your computer or mobile device.



**Note:** See the user documentation for your computer or mobile device for the most up-to-date instructions on connecting to a wireless network.

- Apple devices—choose **Settings > Wi-Fi**.
  - Android devices—choose **Settings > Wireless & Networks > Wi-Fi**.
  - Mac Computer—select **Apple > System Preferences** and then select **Network**.
  - PC—enable the wireless connection.
3. Select **Seagate Wireless** from the list of networks.  
This establishes a wireless connection between your device and the Seagate Wireless Plus.
  4. Open the Seagate Media app.
    - On the home page of your mobile device, tap the Seagate Media app icon.
    - On your computer, open a browser and type “[www.seagatewirelessplus.com](http://www.seagatewirelessplus.com)” or any other URL in the address bar.The Seagate Wireless Plus main page appears with the Getting Started tutorial ready for viewing.
  5. Follow the steps in the Getting Started tutorial to verify that you can view a video and connect to the Internet.  
Your devices are now ready to stream the sample media packaged with your Seagate Wireless Plus.

## Loading Media onto the Seagate Wireless Plus

1. Connect the supplied USB 3.0 cable to the Seagate Wireless Plus and the USB 3.0 or 2.0 port on your computer.



### Notes:

If you are connecting to a Mac, do not allow Time Machine to use the Seagate Wireless Plus for backup because it will attempt to reformat the drive. If your device has been reformatted, see [I mistakenly reformatted the drive for my Mac](#).

The Seagate Wireless Plus is not available as a wireless connection to your other devices while it is physically connected to your computer.

The device’s name appears on your computer as Seagate Wireless xxx where xxx represents the last three digits of the device’s serial number.

2. The power button on your Seagate Wireless Plus can be on or off. The device gets its power from the computer.  
A white Wi-Fi LED indicates that the wireless connection has been disabled. The battery LED turns amber when the device is charging.
3. (Mac only) If the device is connected to your Mac, install **MacInstaller.dmg** (located on your Seagate Wireless Plus) to allow file copying.
4. Copy media to your device by dragging and dropping files from your computer to your device.



#### Notes:

It is the user's responsibility to comply with applicable copyright laws and to respect owner's rights in content usage.

The time it takes to copy data to your Seagate Wireless Plus depends on the amount you are copying. If you have a lot of media files, consider copying the files overnight.

Your Apple, Android, or other Wi-Fi device plays files only in the formats that it supports. See your device's specifications for details.


You cannot copy files from your Seagate Wireless Plus to your computer. You can copy files to and from your mobile device and your Seagate Wireless Plus while in Wi-Fi mode.

You can also install Seagate Media Sync software to help you copy your files and synchronize them after they are on your Seagate Wireless Plus. Download the software to learn more:

- [Windows](#)
- [Mac](#)

## Setting a Password for Your Seagate Wireless Plus

When you set a password for your Seagate Wireless Plus, only those who know the password can connect their devices to the wireless device.

1. Establish a wireless connection from your mobile device or computer to the Seagate Wireless Plus.
2. Open the Seagate Media app on your mobile device or in a Web browser on your computer.
3. Tap or click the Settings icon ().
4. Tap or select **Network**.
5. Tap or select **Turn on password** (or **Off** to the right of **Enable Password** on some devices).
6. Type a password of at least 8 alphanumeric characters in the window that opens, and then tap or click **OK**.


## Connecting to the Internet Through Your Seagate Wireless Plus

To stream media from the device and browse other sites at the same time, connect to the Internet through your Seagate Wireless Plus.



**TIP:** We do not recommend streaming a movie from the Internet while connected to the Seagate Wireless Plus network.

1. Establish a wireless connection from your mobile device or computer to the Seagate Wireless Plus.
2. Open the Seagate Media app on your mobile device or in a Web browser on your computer.

3. Tap or click the Wi-Fi icon (  on most devices) near the top of the app or page.
4. Select the wireless network you want and tap or click **Join Network**.

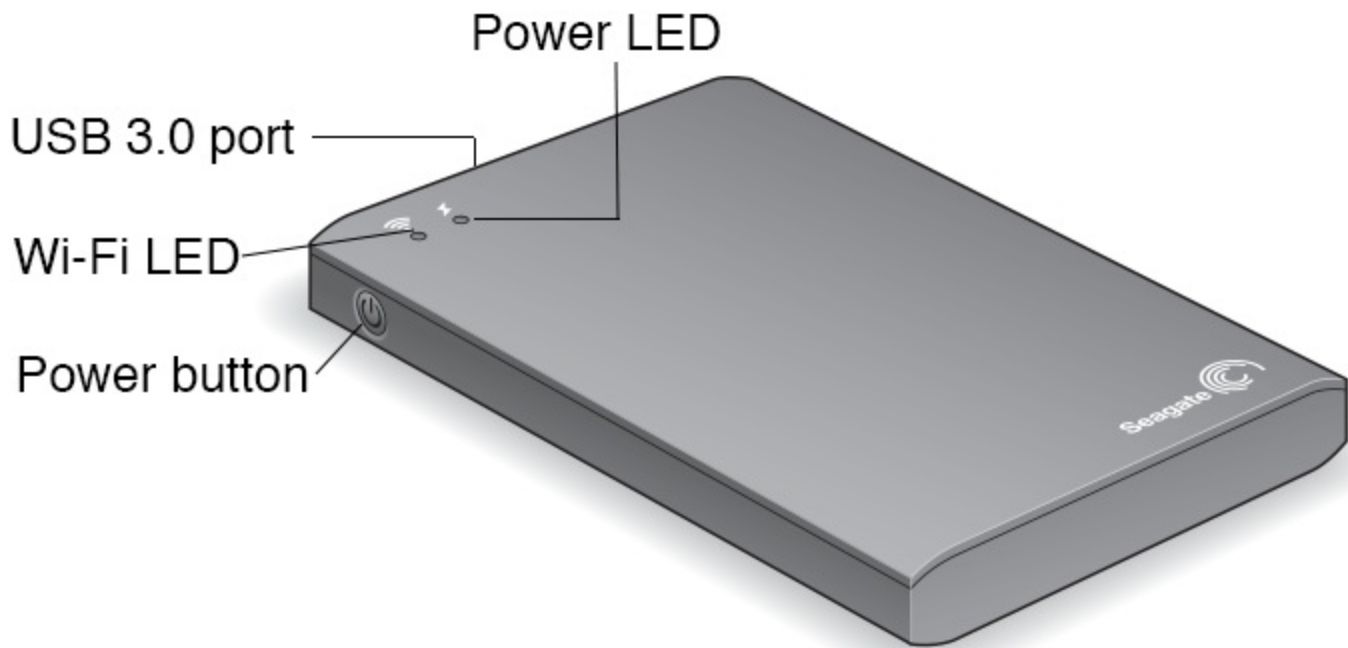
## Streaming Media

Use the Seagate Media app to stream media from the Seagate Wireless Plus to your mobile device or computer.

1. Power on the Seagate Wireless Plus.
2. Establish a wireless connection between the Seagate Wireless Plus and your mobile device or computer.
3. Open the Seagate Media app on your mobile device or in a Web browser on your computer.
4. Select the media you want to play, and enjoy.  
You can connect up to eight devices to the Seagate Wireless Plus, and you can stream to up to five devices at the same time.
5. For details on using the Seagate Media app, view the [Seagate Media App User's Guide](#).

# Using Wireless Plus

Understanding how your Seagate Wireless Plus operates helps keep your device charged and ready to stream your media library.



## Understanding Wi-Fi Mode

The Seagate Wireless Plus serves as a Wi-Fi network allowing you to stream your media to other devices. When the wireless device is physically connected to your computer, Wi-Fi mode is disabled.

Wi-Fi LED Color	Description
Blue	Wi-Fi enabled and ready to broadcast to other devices.
White	Wi-Fi disabled and physically connected to a computer.
No Color	Wi-Fi disabled and powered off.

## Connecting the device to your computer

If you are using the device to broadcast Wi-Fi and then physically connect the device to your computer, the Wi-Fi LED turns from blue to white and Wi-Fi is disabled.

## Disconnecting the device from your computer

If the device is turned on and is physically connected to your computer, the Wi-Fi LED is white. If you disconnect the device from the computer, the device searches for a network and the LED turns solid blue when it begins broadcasting.

If the device has not been turned on and is physically connected to your computer, the Wi-Fi LED is white. If you disconnect the device from the computer, the Wi-Fi LED has no color because the device is turned off and unable to broadcast over Wi-Fi.

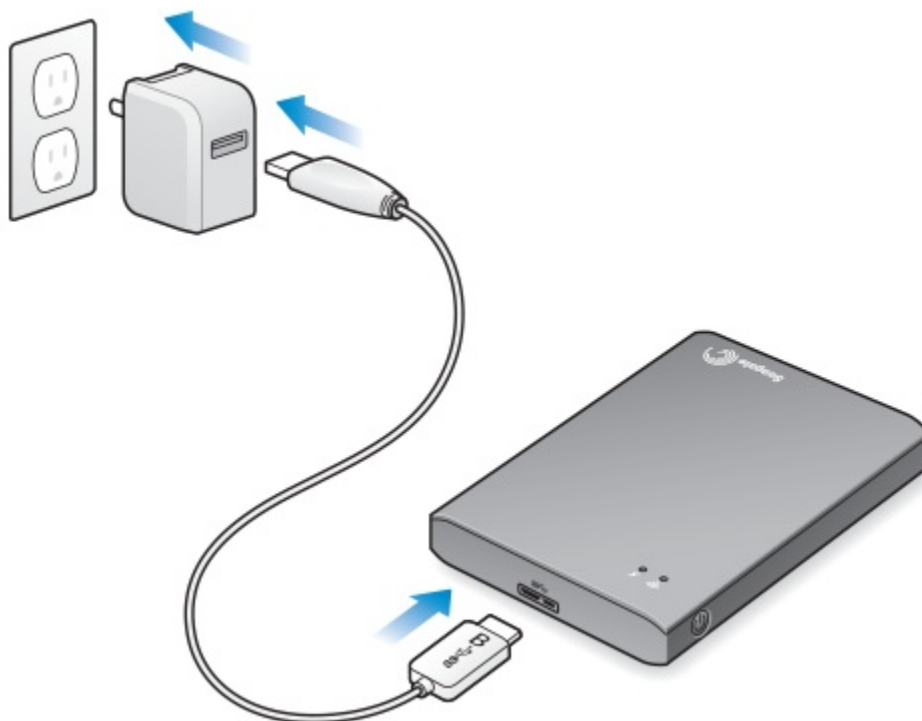
**i** **TIP:** If your Seagate Wireless Plus is not working as you expect, reset the device by pressing and holding the power button for 15 seconds. This turns off the LEDs, and then shuts down and restarts the device.

## Working with the Battery

The Seagate Wireless Plus uses a rechargeable lithium-ion battery.

### Charging the Battery

- To charge the battery, connect the device to a power outlet using the included USB to DC wall adapter.



Battery LED Color	Description
Green	Charged—A fully charged battery provides up to 10 hours of continuous streaming, but loses the charge faster when playing higher resolution video. The battery retains its charge for up to 25 hours when the device is in standby mode, which occurs after 5 minutes of inactivity.
Red	Low—The battery needs to be charged. When the LED turns red, the battery has about 15–20 minutes of life and should be charged soon.
Amber	Charging—The device is plugged in and charging. Recharging takes about 4 hours. For safety purposes, the device stops charging after 4 hours.

Your Seagate Wireless Plus also charges when it is physically connected to a computer but at a slower rate.

## Recycling the Battery

The battery is not user-replaceable and is affected by the number of charge cycles. It must be disposed of properly.

## Resetting Your Device to Its Factory Settings

For a variety of reasons, you might need to reset your Seagate Wireless Plus back to its original factory settings.

- Press and release the button located on the bottom of your device. No data is lost during this process, and you do not need to reconfigure the device.



# Getting Help

The Seagate Wireless Plus is a plug-and-play device. However, in certain situations, the setup process and product usage might require extra attention.

## Finding More Help

Visit the [Seagate Wireless Plus support page](#) where you will find:

- How-to videos
- Firmware updates (when available)
- Software updates (when available)
- FAQs

## Common Problems and Solutions

### I can't connect wirelessly to the Seagate Wireless Plus

- Make sure that the Seagate Wireless Plus is physically disconnected from your computer, powered on, and that the Wi-Fi LED is a steady blue. A steady blue indicates that the device is Wi-Fi ready and broadcasting.
- Make sure to select **Seagate Wireless** from your device's wireless network list. If you leave the Seagate Wireless Plus range (150 feet), your device disconnects from the signal. Any obstructions, such as walls between your device and Seagate Wireless Plus, might affect the strength of the signal.
- If you know that the Seagate Wireless Plus is broadcasting, but your device can't connect, the upper limit of eight devices might already be connected to it. Try disconnecting one of the other devices.
- If you are attempting to stream using a browser, make sure that your device's wireless connection is enabled. Go to any URL to be redirected to the Seagate Wireless Plus main page.

### I mistakenly reformatted the drive for my Mac

If you mistakenly allowed Time Machine to use the Seagate Wireless Plus as its backup drive, it reformatted the drive for backup purposes. You must return the Seagate Wireless Plus to the NTFS format.



**Important info:** Reformatting erases all of the data on the Seagate Wireless Plus.

1. Copy any data that you want to keep from the Seagate Wireless Plus to another device.
2. Eject and disconnect any other USB drives from your Mac.
3. Attach the Seagate Wireless Plus to your Mac.
4. Install the NTFS driver included on the Seagate Wireless Plus.  
You can also find this driver on the [Seagate download page](#).
5. On your Mac, open Finder, click **Go**, and then click **Utilities**.

6. Double-click **Disk Utility**
7. Select the **Seagate Wireless Plus** drive or **Seagate USB**.
8. Click the **Erase** button.
9. For **Format type**, select **Windows NT File System** (do not select the compressed option).
10. Enter a recognizable name, for example, Seagate Wireless Plus drive.  
This is the name that appears on the Desktop when you connect the Seagate Wireless Plus to your Mac. The Seagate Wireless Plus should be ready to use within a few minutes. You may need to eject the device by dragging it to the trash can and then disconnect and reconnect it to gain full read and write capability.
11. You can now setup the Seagate Wireless Plus for your use.



**Remember:** If you are using Time Machine, do not allow the program to use the Seagate Wireless Plus drive for backup.

### **The Seagate Wireless Plus shuts down by itself**

Your Seagate Wireless Plus includes a power-save feature, which means that it enters a standby state after 5 minutes of inactivity. Your device automatically returns to active mode whenever someone attempts to access it.

### **I know the Seagate Wireless Plus is broadcasting, but I can't stream from it**

Up to five wireless-enabled devices can stream from the Seagate Wireless Plus at one time. To see how many devices are currently connected to the Seagate Wireless Plus, open the Seagate Media app on a connected device and tap **Users**.

### **The Seagate Wireless Plus beeps when I plug it in to my computer**

The battery is low. Connect your Seagate Wireless Plus to a power outlet using the included USB to DC adapter and charge the device.