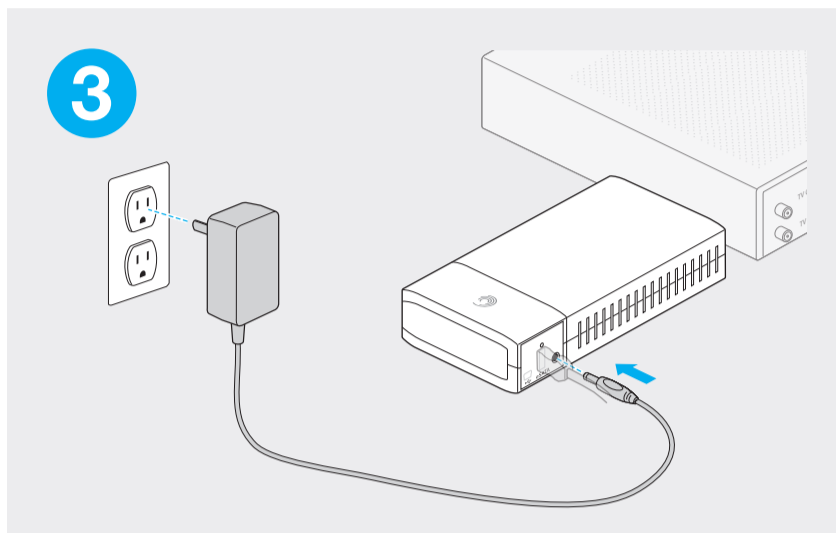
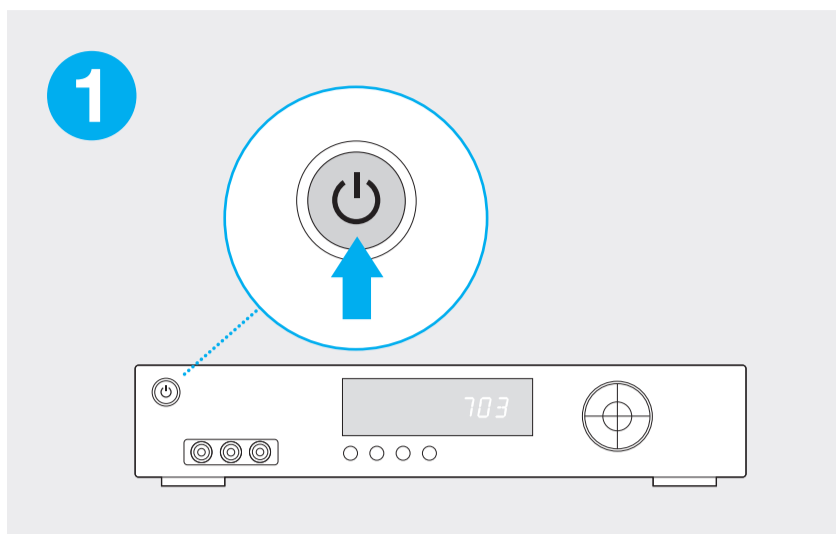
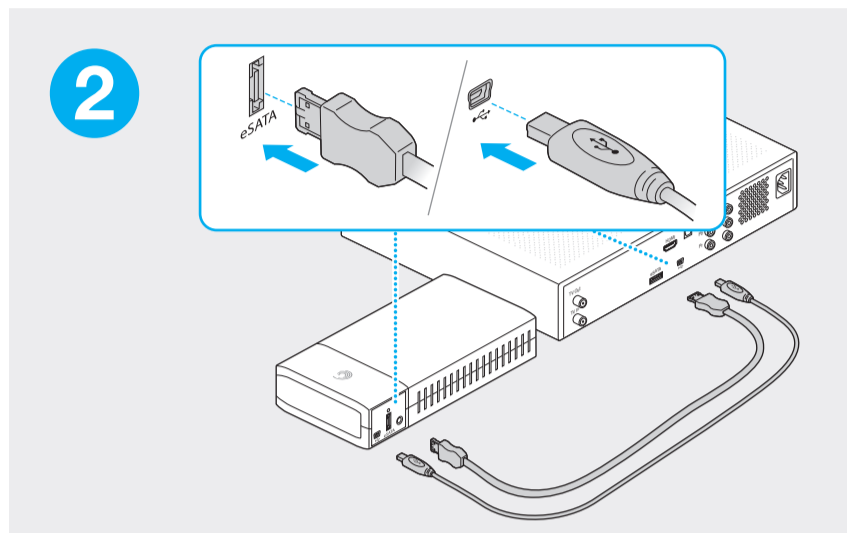
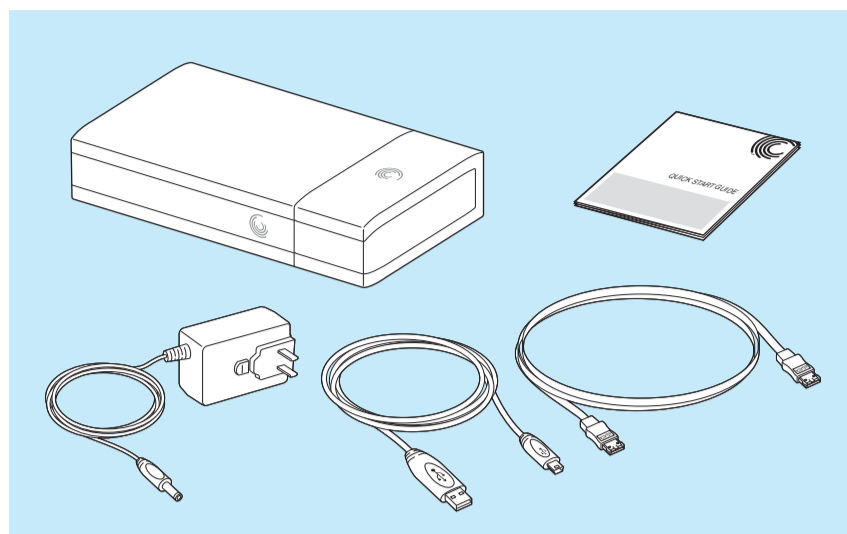
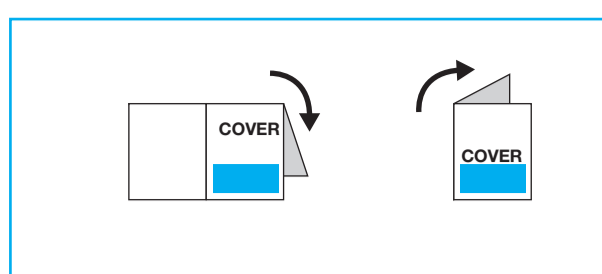


Seagate DVR Expander QSG-PANAM  
Part Number: 100685546B  
Folded Size: 122mm W x 155mm H  
Trim Size: 244mm W x 310mm H  
Colors: 2C/2C

CYAN

K

# Seagate DVR Expander QSG-PANAM



## EN Connect Seagate DVR Expander Drive to Your DVR

1. Turn your DVR off.  
**NOTE:** Some DVRs require a full power cycle before recognizing an external drive, therefore it is recommended to make sure your DVR is powered down and unplugged before going to Step 2.
2. Connect the included eSATA or USB cable to the eSATA or USB connector on the Seagate DVR Expander drive and to your DVR.
3. Connect the included power adapter to the Seagate DVR Expander drive and to an electrical outlet. The Power LED on the Seagate DVR Expander drive illuminates. Wait about 15 seconds for the Seagate DVR Expander drive to power on completely.
4. Turn on your DVR and allow a minute or two for the DVR to recognize the Seagate DVR Expander drive.

### Format Seagate DVR Expander Drive

1. Make sure your TV is on.
2. If your DVR does not begin formatting the Seagate DVR Expander drive automatically, follow the on-screen instructions to initiate the process. Your DVR manufacturer or service provider may have additional installation instructions.

Go to [www.seagate.com/www/dvr-expander](http://www.seagate.com/www/dvr-expander) for additional information about setting up the Seagate DVR Expander drive with your DVR. Have the model of the DVR handy.

**NOTE:** To ensure optimal performance and prevent operating errors, do not move the Seagate DVR Expander drive while it is powered on and connected to your DVR.

**NOTE:** The Seagate DVR Expander eSATA drive is not designed to be used with a computer (laptop or desktop). The Seagate DVR Expander eSATA drive should only be used with DVRs. Do not plug the Seagate DVR Expander drive into any type of computer eSATA port.

## FR Connectez le disque Seagate DVR Expander à votre enregistreur numérique

1. Éteignez votre enregistreur numérique.  
**REMARQUE :** certains enregistreurs numériques doivent être entièrement éteints puis rallumés pour reconnaître un disque externe. Par conséquent, nous vous recommandons de veiller à éteindre et débrancher votre enregistreur numérique avant de passer à l'étape 2.
2. Connectez le câble eSATA ou USB fourni au connecteur eSATA ou USB du disque Seagate DVR Expander et de votre enregistreur numérique.
3. Connectez le transformateur fourni au disque Seagate DVR Expander et à une prise électrique. Le voyant d'alimentation du disque Seagate DVR Expander s'allume. Patientez environ 15 secondes pour que le disque soit totalement allumé.

4. Allumez votre enregistreur numérique et attendez une ou deux minutes pour lui permettre de reconnaître le disque Seagate DVR Expander.

### Formatez le disque Seagate DVR Expander

1. Assurez-vous que votre téléviseur est allumé.
2. Si le formatage du disque ne commence pas automatiquement, suivez les instructions affichées à l'écran afin de lancer le processus. Selon le fabricant de votre enregistreur numérique ou votre fournisseur de service, il peut y avoir des instructions d'installation supplémentaires. Accédez au site [www.seagate.com/www/dvr-expander](http://www.seagate.com/www/dvr-expander) pour plus d'informations sur la configuration du disque Seagate DVR Expander afin de pouvoir l'utiliser avec votre enregistreur numérique. Vous aurez besoin de connaître le modèle de l'enregistreur.

**REMARQUE :** pour garantir des performances optimales et éviter toute erreur de fonctionnement, ne déplacez pas le disque Seagate DVR Expander lorsqu'il est allumé et connecté à votre enregistreur numérique.

**REMARQUE :** le disque Seagate DVR Expander eSATA n'est pas conçu pour être utilisé sur un ordinateur (portable ou de bureau). Il peut uniquement être utilisé avec des enregistreurs numériques. Ne connectez le disque Seagate DVR Expander à aucun type de port matériel eSATA.

## ES Conecte la unidad Seagate DVR Expander al DVR

1. Apague el grabador de vídeo digital (DVR).  
**NOTA:** algunos grabadores de vídeo digitales (DVR) deben completar un ciclo de encendido antes de reconocer una unidad externa, por lo que le recomendamos que se asegure de que su DVR se encuentra apagado y desenchufado antes de proceder con el paso 2.
2. Conecte el cable eSATA o USB incluido al conector eSATA o USB de la unidad Seagate DVR Expander y al DVR.
3. Enchufe el adaptador de corriente incluido a la unidad Seagate DVR Expander y a una toma eléctrica. Se iluminará el LED de encendido de la unidad Seagate DVR Expander. Espere unos 15 segundos a que la unidad Seagate DVR Expander se encienda por completo.
4. Encienda el DVR y deje transcurrir un minuto o dos para que el DVR reconozca la unidad Seagate DVR Expander.

### Formatee la unidad Seagate DVR Expander

1. Asegúrese de que el televisor esté encendido.
2. Si el DVR no comienza a formatear la unidad Seagate DVR Expander automáticamente, siga las instrucciones que aparecen en pantalla para iniciar el proceso.

El fabricante del DVR o el proveedor de servicios pueden facilitarle instrucciones de instalación adicionales.

Visite el sitio web [www.seagate.com/www/dvr-expander](http://www.seagate.com/www/dvr-expander) para obtener más información sobre la configuración de la unidad Seagate DVR Expander con el DVR. Tenga a mano el modelo del DVR.

**NOTA:** Para garantizar un rendimiento óptimo y evitar errores de funcionamiento, no mueva la unidad Seagate DVR Expander mientras esté encendida y conectada al DVR.

**NOTA:** La unidad Seagate DVR Expander eSATA no está diseñada para ser utilizada con un ordenador (portátil o de escritorio). La unidad Seagate DVR Expander eSATA sólo debe utilizarse con DVR. No conecte la unidad Seagate DVR Expander a ningún puerto eSATA de ordenador.

## BR Conecte a unidade Seagate DVR Expander a seu DVR

1. Desligue o DVR.  
**NOTA:** para reconhecer uma unidade externa, alguns DVRs exigem um reinício completo, portanto, é recomendado verificar se o DVR está desligado e desconectado antes de passar para a Etapa 2.
2. Conecte o cabo eSATA ou USB fornecido ao conector eSATA ou USB na unidade Seagate DVR Expander e no DVR.
3. Conecte o adaptador de alimentação incluído à unidade Seagate DVR Expander e a uma tomada. O LED de alimentação na unidade Seagate DVR Expander acende. Aguarde cerca de 15 segundos para a unidade Seagate DVR Expander ligar completamente.
4. Ligue o DVR e aguarde um ou dois minutos até o DVR reconhecer a unidade Seagate DVR Expander.

### Formate a unidade Seagate DVR Expander

1. Verifique se o TV está ligado.
2. Se o DVR não começar a formatar a unidade Seagate DVR Expander automaticamente, siga as instruções que aparecem na tela para iniciar o processo.

O fabricante do DVR ou provedor de serviços poderá ter informações de instalação adicionais.

Vá para [www.seagate.com/www/dvr-expander](http://www.seagate.com/www/dvr-expander) para obter informações adicionais sobre a configuração da unidade Seagate DVR Expander com o DVR. Tenha o modelo do DVR à mão.

**NOTA:** para garantir o melhor desempenho possível e evitar erros de operação, não mova a unidade Seagate DVR Expander enquanto ela estiver ligada e conectada ao DVR.

**NOTA:** a unidade Seagate DVR Expander eSATA não foi projetada para ser usada com computadores ou notebooks. Essa unidade deve ser usada somente com DVRs. Não conecte a unidade Seagate DVR Expander a nenhum tipo de porta eSATA de computador.

## EN WWW.SEAGATE.COM

- Visit us at our Support pages for assistance with:
- **Installation:** Additional instructions and troubleshooting assistance
  - **Knowledge Base:** FAQ's, How to use this product
  - **Warranty Information**
  - And all of your other storage needs

To contact support, visit us at our **Contact Us** page.

**NOTE:** Check with your service provider for compatibility of your DVR or receiver with the Seagate DVR Expander drive. Not all service providers have enabled their DVR or receivers to work with the Seagate DVR Expander drive. Your service provider may charge additional fees to enable your Seagate DVR Expander drive.

**FCC DECLARATION OF CONFORMANCE**  
This device complies with Part 15 of the FCC Rules. Operation is subject to the following two conditions: (1) this device may not cause harmful interference, and (2) this device must accept any interference received, including interference that may cause undesired operation.

### CLASS B

This equipment has been tested and found to comply with the limits for a Class B digital device, pursuant to Part 15 of the FCC Rules. These limits are designed to provide reasonable protection against harmful interference in residential installation. This equipment generates, uses, and can radiate radio frequency energy and, if not installed and used in accordance with the instructions, may cause harmful interference to radio communications.

However, there is no guarantee that interference will not occur in a particular installation. If this equipment does cause harmful interference to radio or television reception, which can be determined by turning the equipment off and on, the user is encouraged to try to correct the interference by one or more of the following measures:

- Reorient or relocate the receiving antenna.
- Increase the separation between the equipment and receiver.
- Connect the equipment into an outlet on a circuit different from that to which the receiver is connected.
- Consult the dealer or an experienced radio/TV technician for help.

**CAUTION:** Any changes or modifications to this equipment may void the user's authority to operate this equipment.

## FR WWW.SEAGATE.COM

Consultez les pages de support technique de notre site pour toute question relative aux points suivants :

- **Installation :** instructions supplémentaires et assistance dépannage
- **Base de connaissances :** FAQ, procédure d'utilisation du produit
- **Informations sur la garantie**
- Et toutes vos questions relatives au stockage des données

Pour contacter le support technique, consultez la page **Nous contacter**.

**REMARQUE :** vérifiez auprès de votre fournisseur de service la compatibilité de votre enregistreur numérique ou de votre récepteur avec le disque Seagate DVR Expander. Certains fournisseurs de service n'ont pas activé leurs enregistreurs numériques ou leurs récepteurs pour qu'ils fonctionnent avec le disque Seagate DVR Expander. Votre fournisseur de service peut vous facturer des frais supplémentaires pour activer ce dernier.

## ES WWW.SEAGATE.COM

Consulte nuestras páginas de asistencia técnica para recibir ayuda sobre:

- **Instalación:** Instrucciones adicionales y asistencia para la resolución de problemas
- **Base de conocimientos:** Preguntas más frecuentes y modo de utilización de este producto
- **Información de garantías**
- Y todas sus demás necesidades de almacenamiento

Para obtener datos de contacto, consulte nuestra página **Contacto**.

**NOTA:** Consulte al proveedor de servicios si su DVR o receptor es compatible con la unidad Seagate DVR Expander. No todos los proveedores de servicios han habilitado sus DVR o receptores para que funcionen con la unidad Seagate DVR Expander. Es posible que su proveedor de servicios aplique un cargo adicional por habilitar la unidad Seagate DVR Expander.

## BR WWW.SEAGATE.COM

Visite nossas páginas de Suporte para obter ajuda com:

- **Instalação:** Instruções adicionais e assistência para solução de problemas
- **Base de Conhecimento:** perguntas frequente e como utilizar este produto
- **Informações sobre garantia**
- E todas as suas necessidades de armazenamento

Para entrar em contato com o suporte, visite nossa página **Contact Us** (Entre em contato conosco).

**NOTA:** verifique com o provedor de serviços a compatibilidade do DVR ou do receptor com a unidade Seagate DVR Expander. Nem todos os provedores de serviços ativaram seu DVR ou receptores para funcionarem com a unidade Seagate DVR Expander. Seu provedor de serviços poderá cobrar taxas adicionais para ativar sua unidade Seagate DVR Expander.



QUICK START GUIDE  
GUIDE DE DÉMARRAGE RAPIDE  
GUÍA DE INICIO RÁPIDO  
GUIA DE INÍCIO RÁPIDO

Seagate

DVR Expander  
EXTERNAL STORAGE FOR  
STORAGE EXPANSION  
ENREGISTREURS NUMÉRIQUES



100685546B

© 2012 Seagate Technology LLC. All rights reserved. Seagate, Seagate Technology, and the Wave logo are trademarks or registered trademarks of Seagate Technology LLC, or one of its affiliated companies in the United States and/or other countries. All other trademarks or registered trademarks are the property of their respective owners. Seagate reserves the right to change, without notice, product offerings or specifications. The export or re-export of hardware or software containing encryption may be regulated by the U.S. Department of Commerce, Bureau of Industry and Security (for more information, visit [www.bis.doc.gov](http://www.bis.doc.gov)) and controlled for export and use outside of the U.S.

Seagate Technology LLC  
10200 S. De Anza Blvd.  
Cupertino, CA 95014  
U.S.A.  
PN: 100685546B 10/12

