

Maxtor®

3in1 Network Drive

Shared Storage Plus⁺
User's Guide



Contents

1 Introduction	1
Shared Storage Plus Features	1
Shared Storage Plus Components	1
Included in this Kit	1
Minimum System Requirements	2
Handling Precautions	2
About this Guide	2
Where to Go for Help	2
2 Installing the Shared Storage	3
Connect your drive	3
Power up your drive	3
Set up your drive	4
3 Using the Shared Storage	9
Using the Drive - Windows	9
The Web UI	32
Using External USB drives with your drive	64
Using USB printers with your drive	65
Shutting down your drive	65
Resetting your drive	65
Media Serving	66
Index	67

1 Introduction

Thank you for selecting the Maxtor Shared Storage Plus drive. Attaching this storage solution to your network in a home or small office is a simple and economical way for users to share files. Your new Maxtor Shared Storage Plus drive offers a winning combination of capacity, simplicity of use and helpful software features that automate configuration, privacy and more. The simple plug-and-play installation allows you to start using your drive as quickly as possible. You can also change settings on your drive at any time, and manage user access through a standard web browser.

Shared Storage Plus Features

Instantly add storage to your network, back up files across every compatible PC on your network, and stream music, videos and photos from your drive to your home entertainment system.

Simple installation and setup

- Automatically configure the drive to your network
- Manage the drive using our simple wizard-based user interface
- Connect and share printers and additional hard drives using the drive's 2 USB ports

Instant shared storage

- Easily store and share access to files, photos, music and videos
- Organize files automatically using our exclusive Drag and Sort™ feature
- Give users full access to public folders, while keeping others private

Back up what matters most

- Protect data on all of your networked PCs using our exclusive Maxtor® Backup
- Get backup and storage status for all users with our SimpleView™ dashboard

Playback of videos, music and photos

- Use our exclusive media streaming feature to play digital photos, music and video on a networked home entertainment system
- Connect automatically through a UPnP™ AV compatible digital media adapter
- Stream media (photos, music and videos) without turning on your computer

Shared Storage Drive Components

Review the features shown before you begin installation.

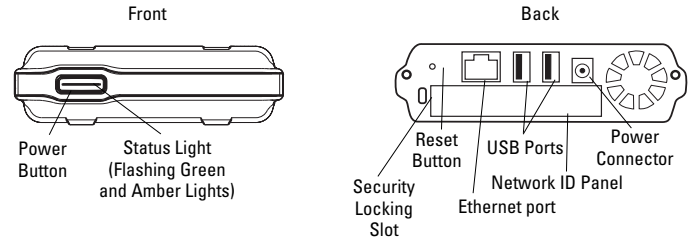


Figure 1. Shared Storage Plus Drive Features

Included in this Kit

The Shared Storage Plus drive comes complete with the components shown in Figure 2.

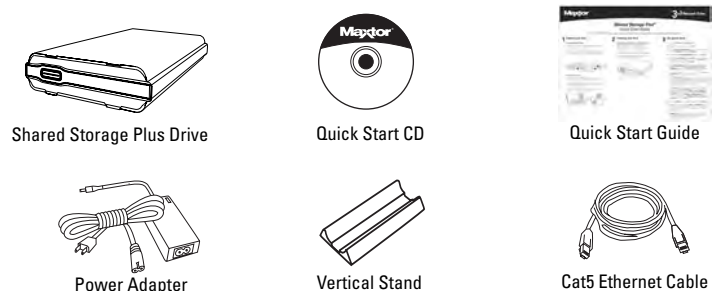


Figure 2. Included in this Kit

Minimum System Requirements

The following are the minimum system requirements.

- Windows 2000, Windows XP
- Wired or wireless router with an available 10/100 Ethernet RJ-45 port
- Internet Explorer 6.0 or higher for management interface of Shared Storage
- Internet access for updates
- Networked Media Adapter

Note: Special considerations for immediate media file access are required. See Media Serving for more information.

Handling Precautions

Handle your drive with care! Follow the precautions listed here or you could damage your drive and void your warranty. Review the Maxtor Limited Warranty, included in the Maxtor Shared Storage Plus Quick Start Guide, for more information.

The following precautions can prevent loss of data:

- Do not bump, jar, drop or move the drive while in operation.
- Do not stack drives.
- Do not set the drive on its side without using the vertical stand as it could fall over and cause damage.
- Do not remove any cables or power cords without powering down the drive, using the front panel button.
- Do not set any liquids or drinks on the drive. Liquids will damage the internal electronics.
- Do not attempt to open the drive's case. This will void your warranty.

About this Guide

The following symbols and conventions are used in this guide:

Bold

Used for menu, command, and keyboard selections you make and screens you will see.



Helpful information about a particular topic.



Important information to prevent problems and ensure that you are successful in using the drive.

Where to Go for Help

Maxtor provides a comprehensive support section on its website, including the latest software, user guides and a knowledge base for its customers.

Maxtor support website

<http://support.maxtor.com/sharedstorage>

Maxtor has provided Shared Storage – Troubleshooting and FAQ Portal from within its Knowledge Base providing you with one link from which you can obtain answers to common questions and problems.

Support phone numbers

Check the **Contact Us** section on the Maxtor support website, for phone numbers in your region.

2 Installing the Shared Storage

Step 1 - Connect your drive

Connecting the Ethernet cable

1. Plug one end of the Ethernet cable into your network, router or switch.
2. Plug the other end of the Ethernet cable into the Ethernet port on your Shared Storage Plus drive.

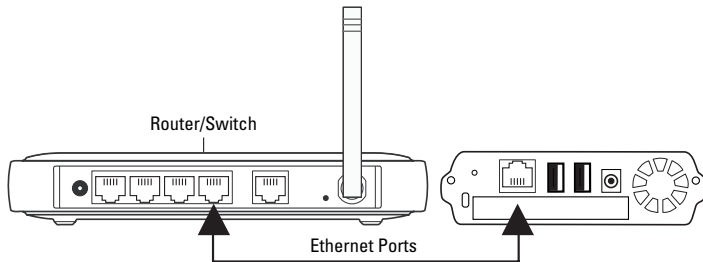


Figure 3. Connecting the Ethernet Cable

Connecting the power

1. Plug the round female connector from the power adapter into the drive's power connector.
2. Plug the female connector on the power cord into the power adapter.

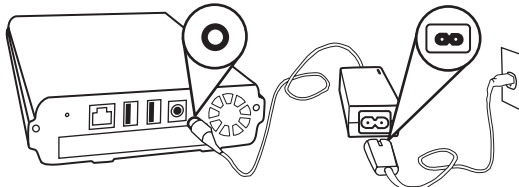


Figure 4. Connecting the Power


3. Plug the standard electrical plug from the power adapter into your power source.

Step 2 - Power up your drive

Press the button on the front of your Maxtor Shared Storage Plus drive.

Your drive will now start. The start up process can take up to one minute to complete.

- The light inside of the button will turn yellow.
- When the light pulses green, your drive is ready and you can go to Step 3.

 Your drive will be accessible on your network approximately 10 seconds after the light turns green.

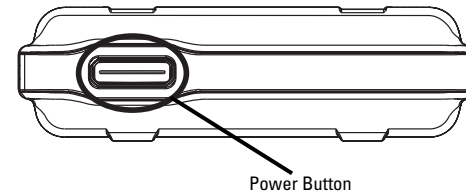
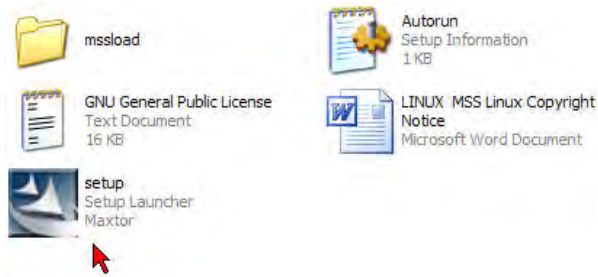


Figure 5. Pressing the Power Button

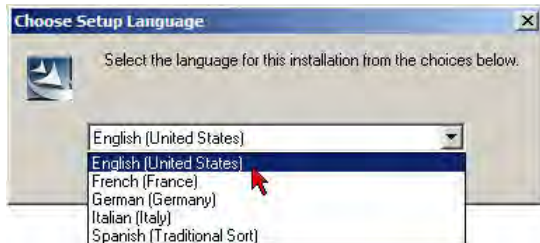
Step 3 - Set up your drive

Note: Maxtor Quick Start software must be installed on each Windows 2000/XP system in order for each user to take advantage of a Personal folder.

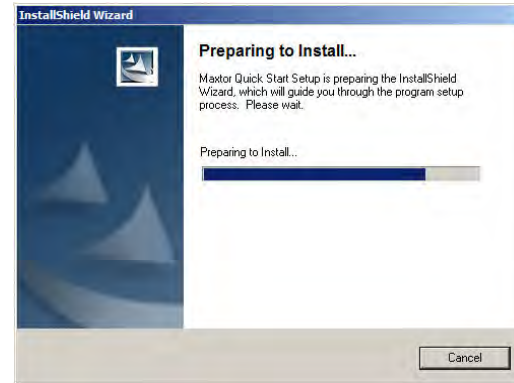
1. Insert the **Maxtor Quick Start CD**.
2. The **Choose Setup Language** screen will appear. If this screen does not appear, you can access it manually by double-clicking the Quick Start CD icon displayed in My Computer or Windows Explorer and double-click on Setup.exe.



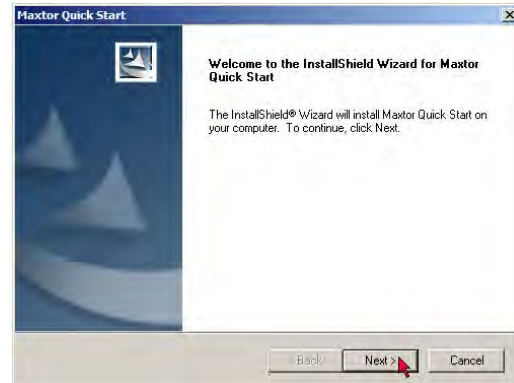
3. Select your language and click **OK**.



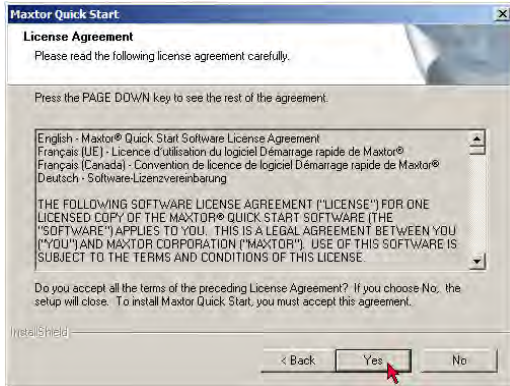
4. The **InstallShield Wizard** screen will appear...



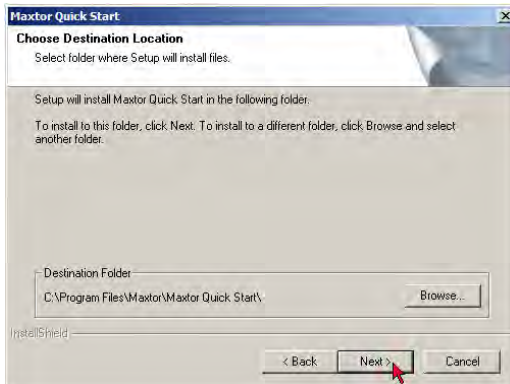
...followed by the **Welcome** screen.



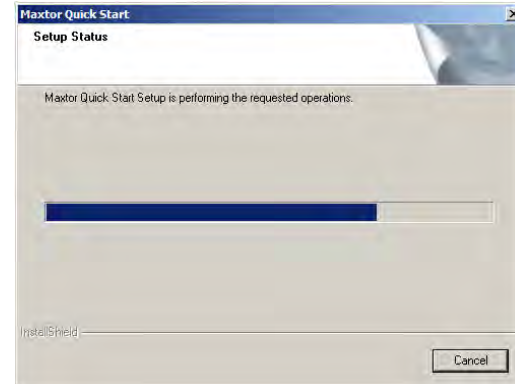
5. Click **Next**. The **License Agreement** screen will appear.



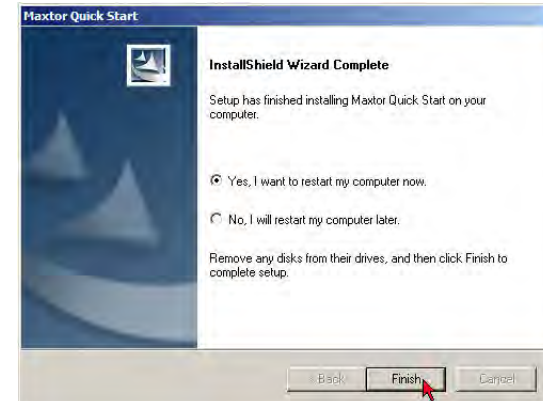
6. Click **Yes**. The **Choose Destination Location** screen will appear. If you wish to change the location of the installation, you may do so by clicking the Browse button and selecting a new location.



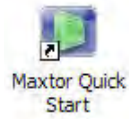
7. Click **Next**. The **Setup Status** screen will appear as the software is installed, followed by the **InstallShield Wizard Complete** screen when the installation is complete.



8. Click **Finish** to restart your system.



9. Once the system is rebooted, double-click on the **Maxtor Quick Start** icon located on your Desktop.



10. The **Quick Start** software will open and the Maxtor screen will appear, with the message: **“Locating Shared Storage Drive s on the Network.”**



11. When your Shared Storage Plus drive is found, you will see its **Network ID number** and **IP address** appear in a drop-down menu in the middle of the screen. For example: MSS-000310 (169.254.60.49)



Note: The Shared Storage Plus drive is configured to acquire an address assigned by a DHCP router or server. If your network does not contain a DHCP router or server, your Shared Storage Drive will assign itself an **Automatic Private IP** (APIPA) address within the IP Range of 169.254.x.x with a Subnet Max of 255.255.0.0. Please reference the Shared Storage – Troubleshooting and FAQ Portal found in Maxtor’s Knowledge Base for more information regarding locating your Shared Storage Drive.

If you have multiple Shared Storage Drives connected to your network, each will appear in the drop-down menu.



12. Click **Next**. The next screen will show the **Network ID** of your drive. The screen will tell you that there is “...no security password” setup for the administrator.

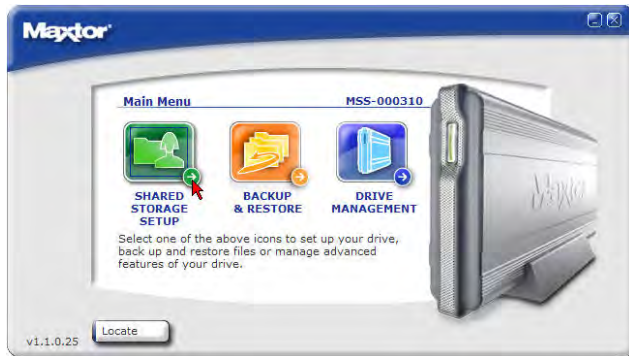


Click **Manage** to set an **Administrative Password**. This will launch the Shared Storage Drive's Web-Based UI (User Interface).

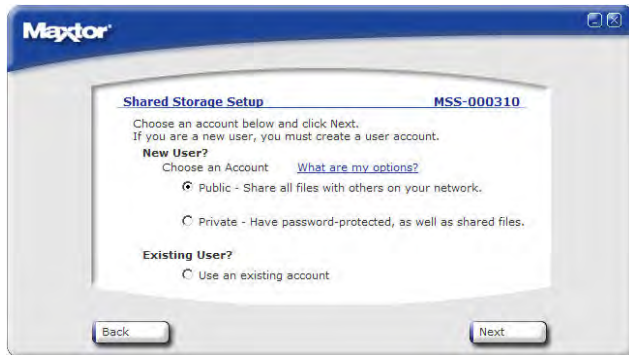
Note: See "The Web UI" on page 32 for Using the Maxtor Shared Storage Plus Web UI. Run Set-up Wizard for more information on setting the Administrative Password.

Click **Next** to **Set up Shared Storage** on this computer. The Main Menu will appear.

13. Click on the **Shared Storage Setup** icon. The Shared Storage Setup window appears.



Choose an **Account** type.



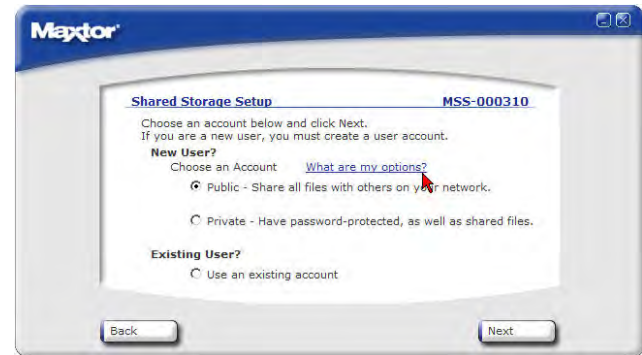
New Public Account - all of your files are accessible to anyone who has an account on your Shared Storage Drive.

New Private Account - all of your files are password-protected except for those that you place in your "public" folder to share with others.

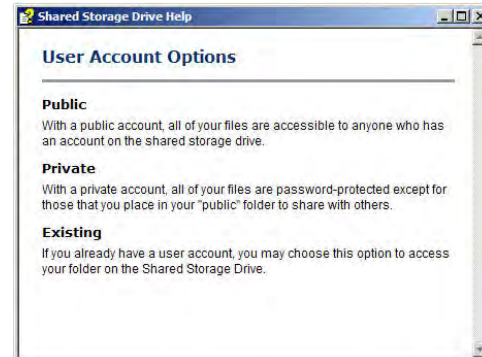
Existing User - If you already have an user account, you may choose this option to access your folder on the Shared Storage Drive.

Make your selection and click **Next**.

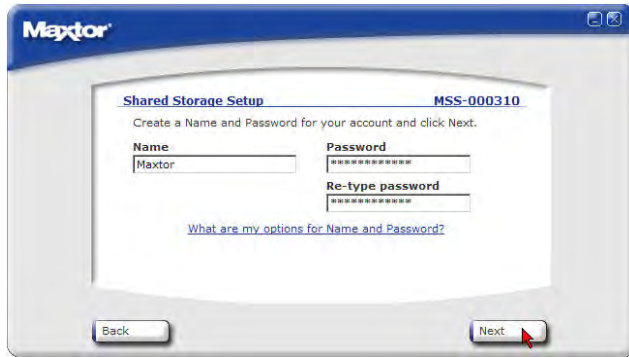
Note: On-line help is available on most screens of the UI. To get help on a topic, click on the hyperlink located on the screen (see example below).



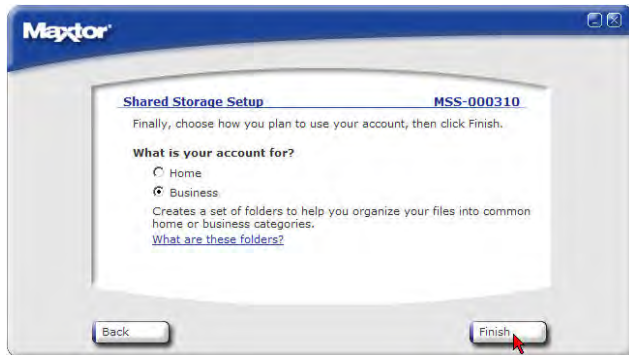
A Help Window displays providing you with more details



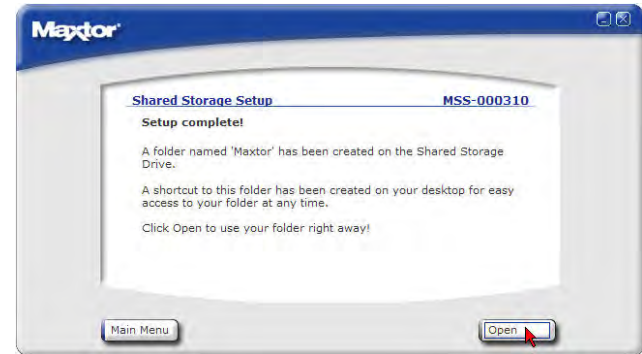
14. Enter a **Name** for the new account (Password and Password confirmation if prompted) and click **Next**.



15. Select your account type (**Home** or **Business** use), and click **Finish**.



16. The Quick Start software will now create your new user account and the appropriate folders for the account. The Set Up Completed screen will appear...



...and a shortcut to your Shared Storage Drive will appear on your Windows Desktop.



3 Using the Shared Storage

Using the Drive - Windows

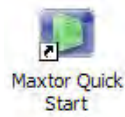
You can use your Maxtor Shared Storage Plus Drive as you do any hard drive that is either built-in or directly connected to your computer.

Maxtor Quick Start Software

The Maxtor Quick Start software is an intuitive tool that allows you to:

- Locate/discover Shared Storage drives on your network
- Setup New User Accounts
- Backup and Restore Files from your computer
- Perform various tasks through its Drive Management options

To access this application, double - click on the **Maxtor Quick Start** shortcut icon located on your PC's desktop.



Note: To access the Maxtor Quick Start software when the shortcut icon has been removed/deleted, click **Start → Program** (all program for Windows XP) → **Maxtor Quick Start**.

To Locate a Shared Storage Drive:

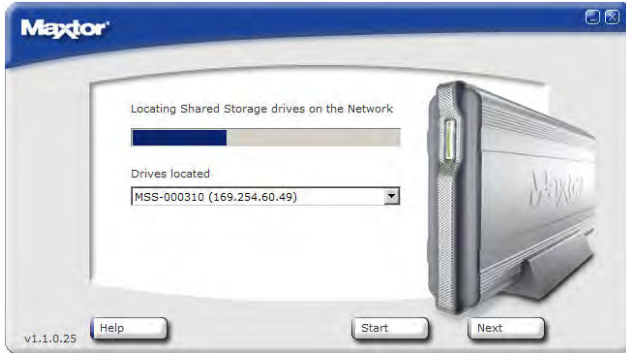
1. Access the Maxtor Quick Start software.



2. Click on the **Locate** button. The Quick Start software will open and the Maxtor screen will appear, with the message: "Locating Shared Storage Drive on the Network."



When your Shared Storage Drive is found, you will see its Network ID number and IP address appear in a drop-down menu in the middle of the screen. For example: MSS-000310 (169.254.60.49)



Note: If you have multiple Shared Storage Drives connected to your network, each will appear in the drop-down menu.

Click **Next** to proceed.

Shared Storage Setup

This option will help you in creating a New user account or select an existing account to be configured to your PC.

1. Click on the **Shared Storage Setup** icon. The Shared Storage Setup window appears.

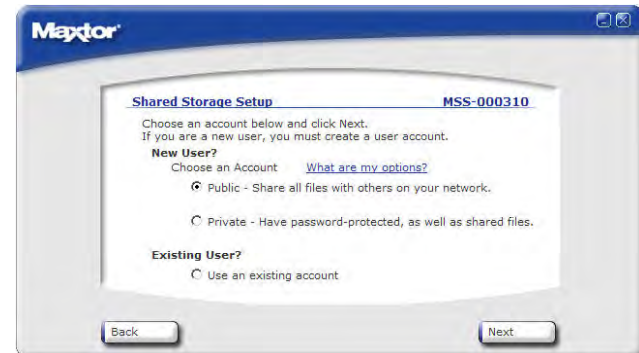


Choose an account type:

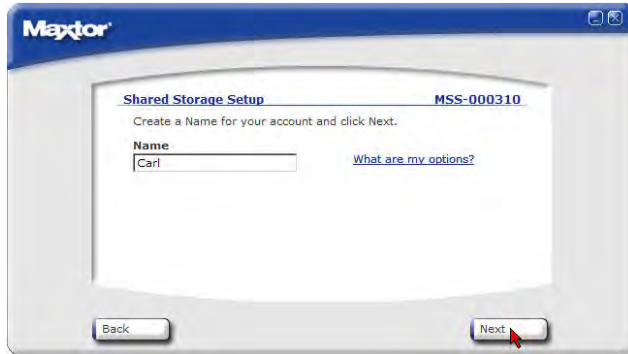
- **New Public User Account** - all of your files are accessible to anyone who has an account on your Shared Storage Drive.
- **New Private User Account** - all of your files are password-protected except for those that you place in your "public" folder to share with others.
- **Existing User Account** - If you already have an user account, you may choose this option to access your folder on the Shared Storage Drive

Creating a New Public User Account:

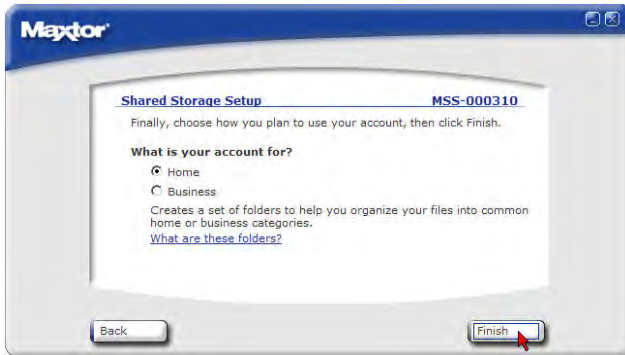
1. From the Maxtor Quick Start Main Menu, click on **Shared Storage Setup**.
2. Under **New User**, click on **Public** radio button and click **Next**.



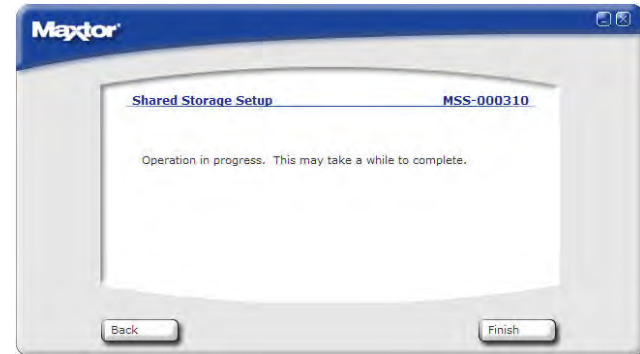
3. Type the name of the **User** and click **Next**.



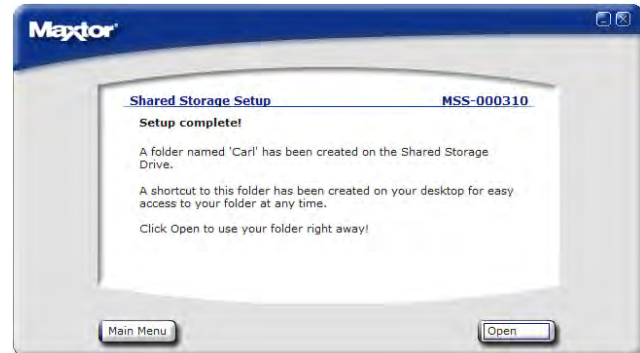
4. Choose your account type (**Home** or **Business** use) and click **Next**.



5. At this point the following screen appears. This process may take awhile.



6. Once the User has been created, you will see:



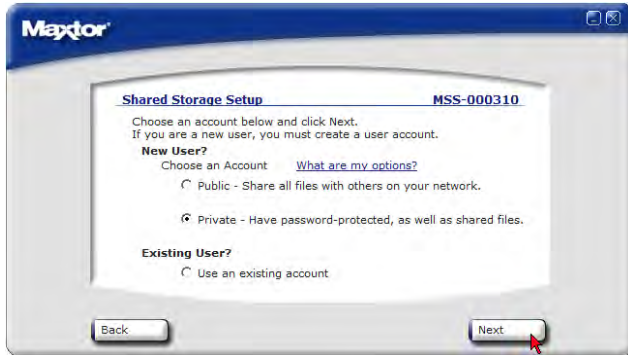
7. When created, a shortcut icon will appear on the system's desktop for the user.



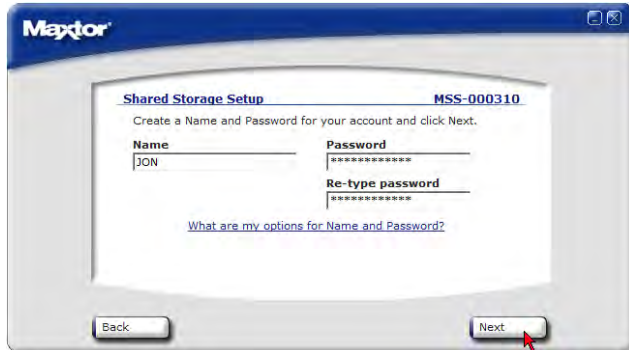
8. Click the **Open** button to use the user's folder right away or click **Main Menu** to return to the Quick Start's main window.

Creating a New Private User Account:

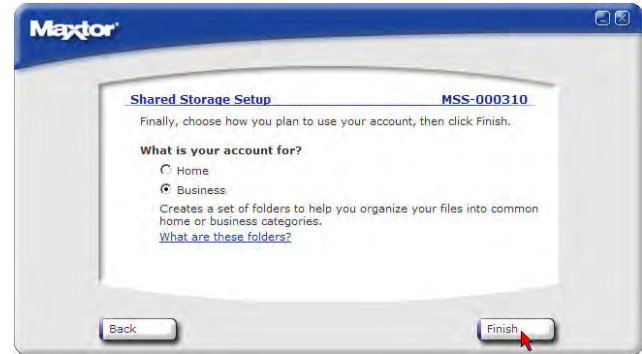
1. From the Maxtor Quick Start Main Menu, click on **Shared Storage Setup**.
2. Under New User, click on the **Private** radio button and click **Next**.



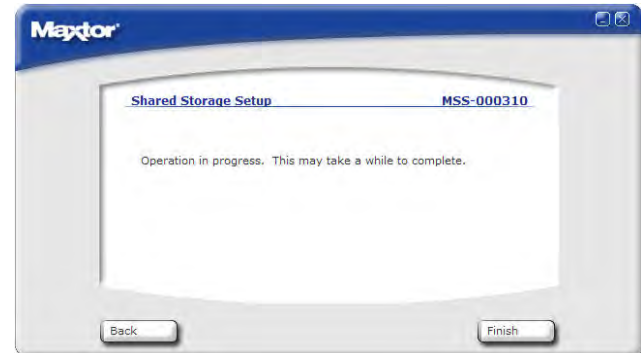
3. Type the name of the User, the User's Password, confirm the Password and click **Next**.



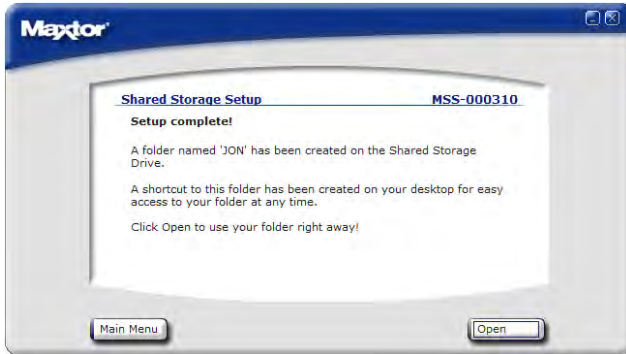
4. Choose the account type (**Home** or **Business** use) and click **Finish**.



5. At this point the following screen appears. This process may take awhile.



- Once the User has been created, you will see:



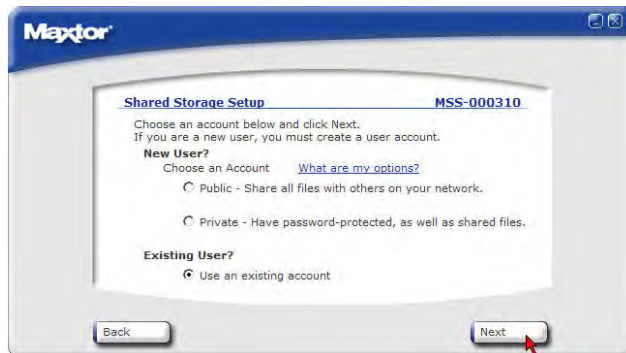
- When created, a shortcut icon will appear on the system's desktop for the user.



- Click the **Open** button to use the user's folder right away or click Main Menu to return to the Quick Start's main window.

Configuring an Existing User:

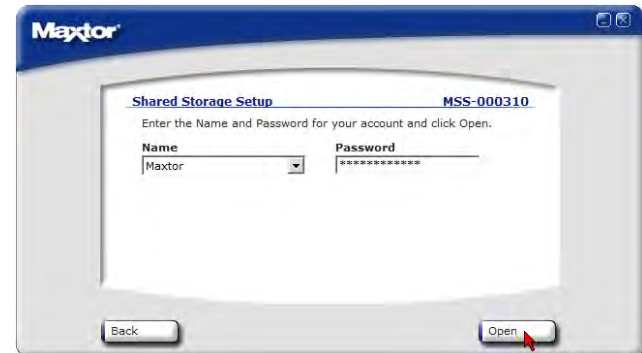
- From the Maxtor Quick Start Main Menu, click on **Shared Storage Setup**.
- Click on the **Use an existing account** radio button and click **Next**.



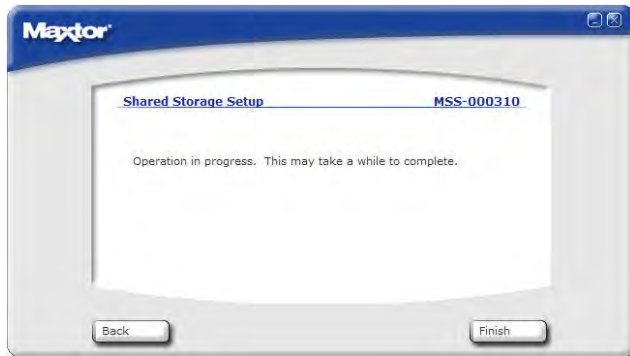
- Click on the **Name** Drop-Down Menu and select the existing user from the list displayed.



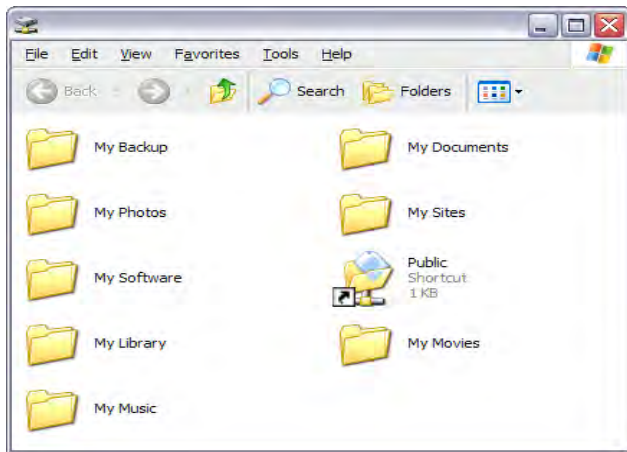
- If needed, type the existing user's password and click **Open**.



5. At this point the following screen appears. This process may take awhile.



6. Once the User has been created, you will see the user's folder display on your Desktop,



and a shortcut to the user's folder will appear on your Windows Desktop.



Differentiating between Home and Business Folders:

You can choose a set of folders appropriate for Home or Business use. The folders created are listed below.

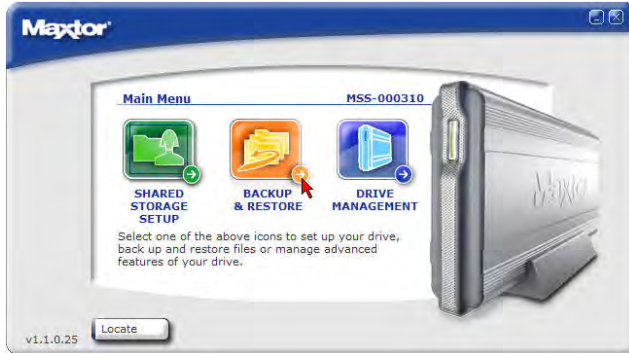
Table 1:

Home Folders	Appropriate for
My Backup	Public Backed-up files
My Documents	Word processing files
My Library	Electronic books
My Movies	Home videos
My Music	Digital music collection
My Photos	Digital photos and artwork
My Sites	Web pages
My Software	Software storage
Public	Sharing files with others

Business Folders	Appropriate for
My Backup	Public Backed-up files
My Documents	Word processing files
My Multimedia	Audio and video files
My Photos	Digital photos and artwork
My Presentations	Presentation files
My Projects	Project files
My Spreadsheets	Spreadsheet files
My Sites	Web pages
My Software	Software storage
Public	Sharing files with others

Using the Backup & Restore Feature:

With the Maxtor Quick Start software open, click **BACKUP & RESTORE**



You will see the following:



From this screen, you can:

- Set a backup so that local files from your PC will backup to the Shared Storage Drive
- Restore files from the Shared Storage Drive to your PC
- Check the status of your last backup using SimpleView™
- Perform file maintenance tasks that delete historical file versions from the Shared Storage Drive and/or synchronize your backup with your PC
- Launch an immediate backup of your selected files/folders from your PC to the Shared Storage Drive

Set Backup:

This option is used to:

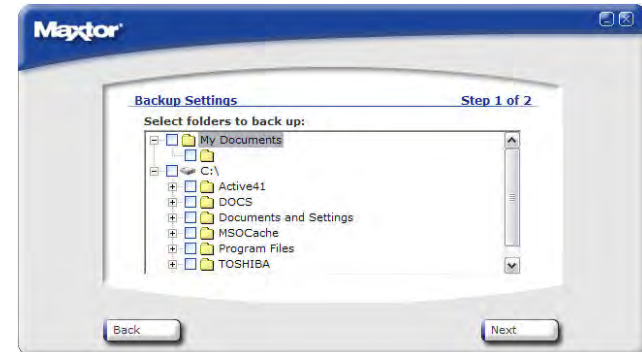
- Select the local files/folders to be backed up to the Shared Storage Drive
- Schedule when files/folders will be backed up to the Shared Storage Drive
- Turn On or Off the Scheduled Backup
- Edit Existing Backup Settings

To set a backup:

1. Launch the Maxtor Quick Start program and click on **BACKUP & RESTORE**.
2. Click on **Set Backup**.

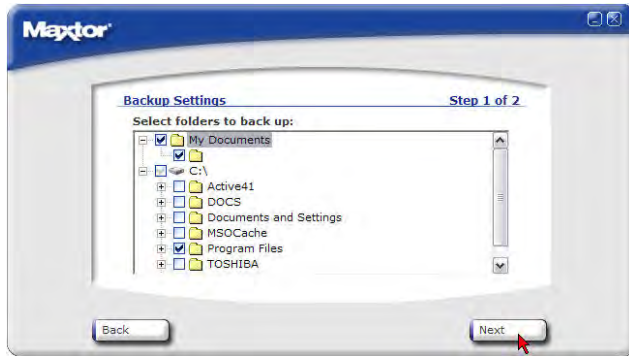


Step 1 of 2 - You will see the following



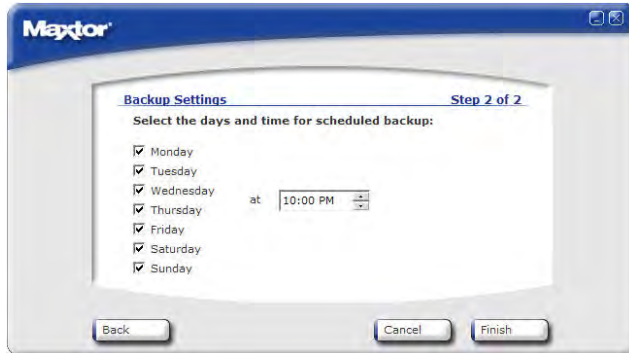
Note: File and Folder names will vary from system to system

3. Check the boxes associated with the files and or folders you wish to back up and click **Next**.

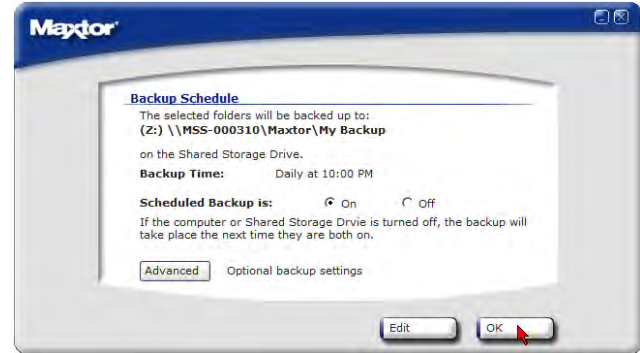


Step 2 of 2 - You will see the following

4. By default your selected files and/or folders will be backed up Daily at 10:00 pm. Click **Finish** to continue.



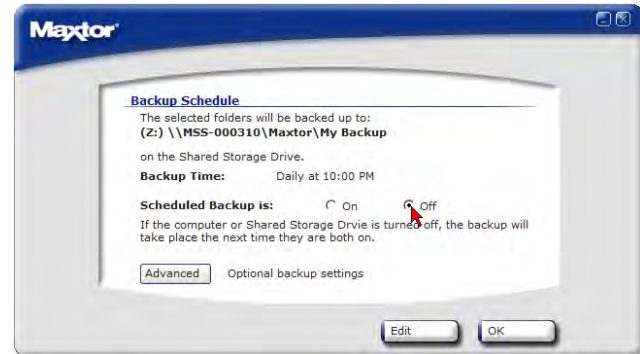
The Backup Schedule window displays and confirms where the selected files/folders will be backed up, and that these files/folders will be backed up Daily at 10:00 PM.



Other Settings:

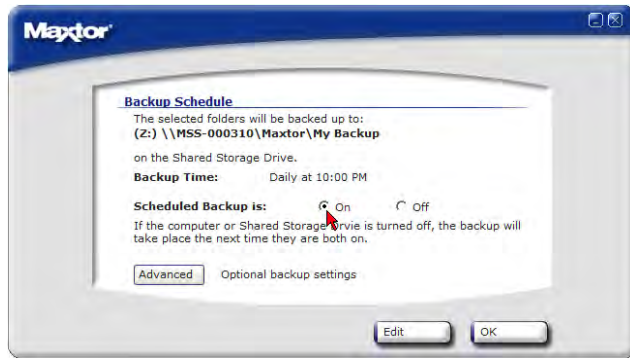
To disable (Turn Off) Scheduled Backups:

5. Click on the **Off** radio button to turn off scheduled backups

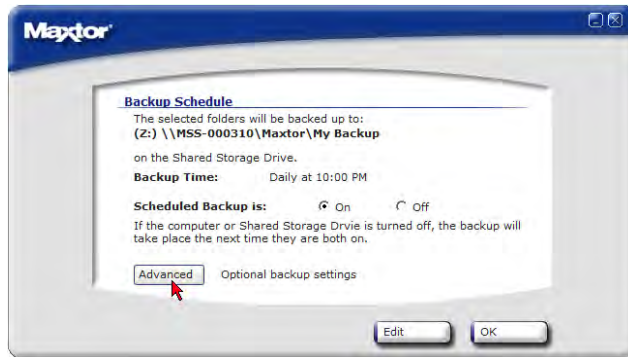


To re-enable (Turn On) Scheduled Backups:

- Click on the **On** radio button to return to scheduled backups.



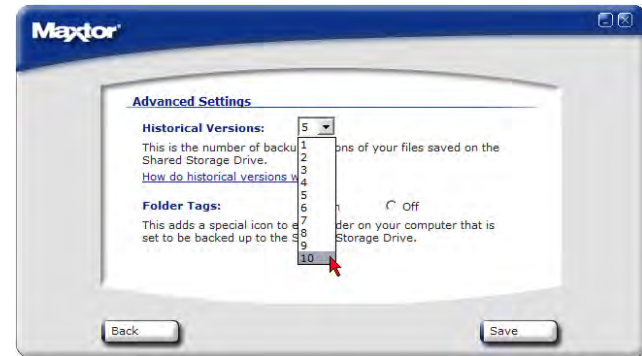
Advanced – Optional backup settings – This feature allows you to set the number of Historical File versions you wish to save to the Shared Storage Drive and adjust Folder Tagging. To adjust these settings, click on the **Advanced** button.



Historic File Versions: When you back up your files, you have the option to store previous, or “historic,” versions of each file. You can then restore any historical version based on the date when it was backed up.

- You can set your backup to store from 1 to 10 historic versions (the default is 5). To adjust the number of Historical File Versions, click on the

Historic Versions Drop-Down field and select the number of backup versions you wish to save.



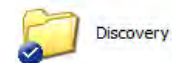
Click on the number that you wish...



...and this number will display in the Historic Versions field.

When the number of historical versions reaches the number that you have selected, the oldest version is deleted and replaced with the newest version with each new backup.

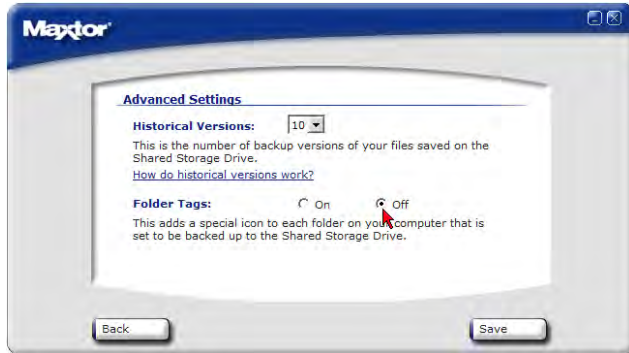
Folder Tags – By default, this feature adds a special icon to each folder on your computer that is set to be backed up to the Shared Storage Drive.



Example of a Folder Tag denoted by the Blue Circle with a check.

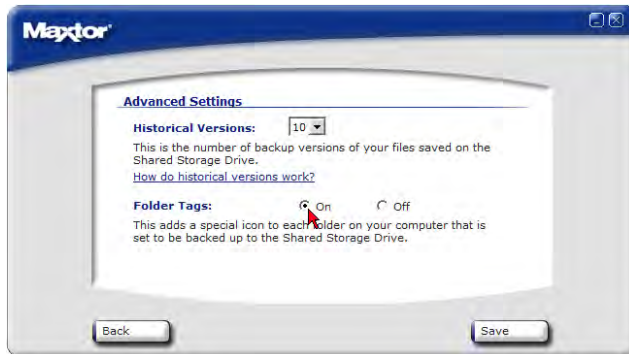
To Disable Folder Tags:

- From the Advanced Setting Window, click on the **Off** radio button to shut down the Folder Tags feature.

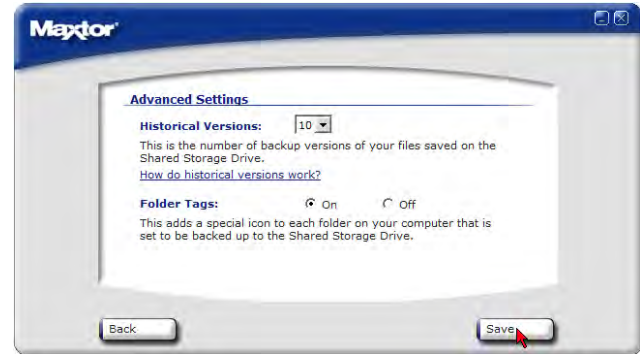


To Re-enable Folder Tags (when it has been shut off):

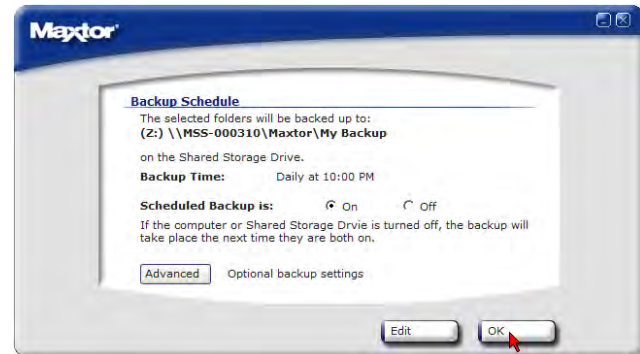
- From the Advanced Setting Window, click on the On radio button to restart the Folder Tags feature.



- When all Advanced Settings have been configured, click Save.



- Click OK to confirm and save all settings...



To Edit a Backup Schedule:

This option allows you to adjust the settings of a current Backup Schedule. To edit a backup schedule:

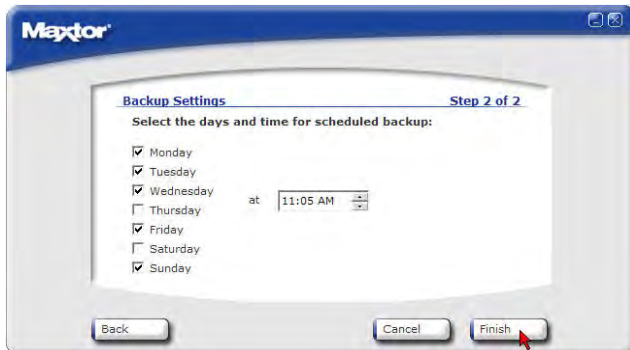
Launch the Maxtor quick start software and click on **BACKUP & RESTORE**.

Click on **Set Backup**.



Select and/or deselect the files/folders that you wish to back up (see Steps 1 of 2 and 2 of 2 above)

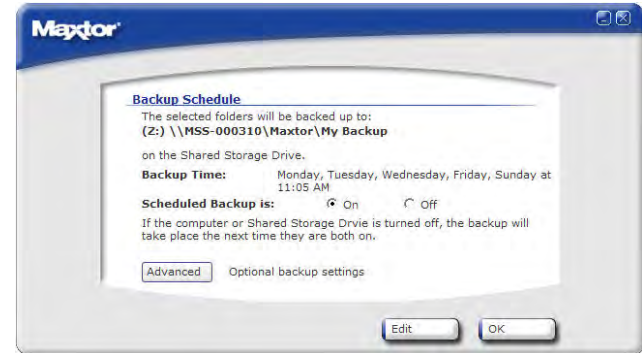
Click on the checkboxes to deselect the days that you do not wish the backup to run; change the time that you wish the backup to run and click **Finish**.



The **Backup Schedule** window displays and confirms where the selected files/folders will be backed up, what days they will be backed up and what time the backup will automatically run.

Make any changes to **Advanced Settings** and click **Save**.

Click **OK** to save these new changes.



Restore Files:

To restore files from the Shared Storage Drive to your PC:

Launch the Maxtor Quick Start program and click on **BACKUP & RESTORE**.

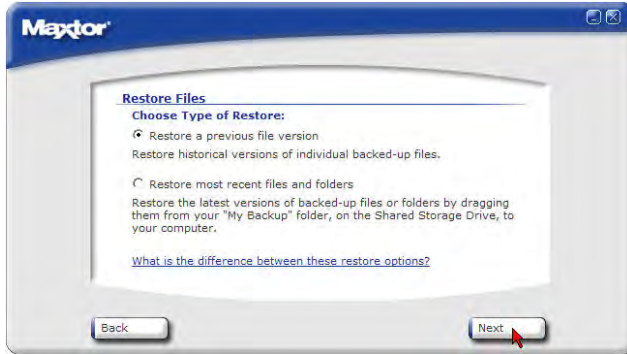
Click on **Restore Files**.

From the Restore Files window, you have two options:

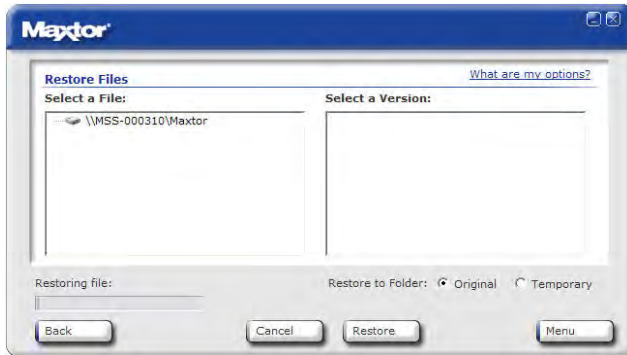
- **Restore a Previous File Version** (default option) - Choosing this option allows you to restore an individual historical version of a file, based on the date it was backed up. The number of historical versions available is based on the number selected in the Advanced backup settings. By default, 5 historical versions of each file are stored.
- **Restore Most Recent Files and Folders** - Choosing this option will open the "My Backup" folder in your personal folder, on the Shared Storage Drive, and allow you to restore multiple files and folders by clicking and dragging them to wherever you want to put them.

To Restore a Previous File Version:

Click on the **Restore a previous file version** radio button and click **Next**.



The Restore Files window appears. All backed up files/folders will appear in the left, Select a **File** column. This process may take awhile to populate.



Once populated, use the Scroll Bar to select a **Version** of the file and where you want to restore the file to:

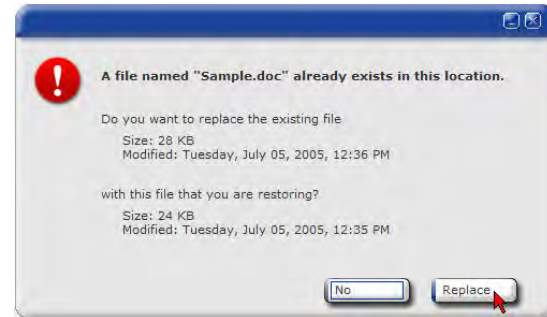
- **Original** (default) - Restores file to its original folder on your computer
- **Temporary** - Restores file to the following folder:

C:\MyDocuments\YourUserName\Maxtor_Restore

Note: "YourUserName" is your account Name.



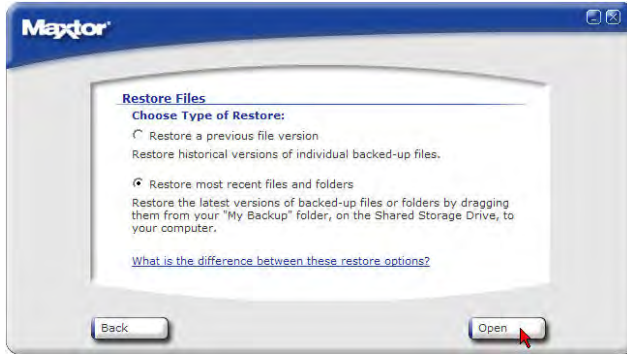
Click **Restore**. If prompted to replace the file, click **Replace**.



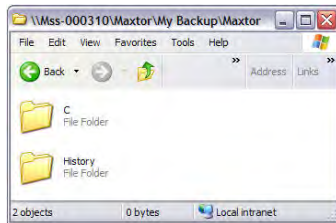
The Historic Version of the file is then copied to your computer from the Shared Storage Drive.

To Restore Most Recent Files and Folders:

Click on the **Restore most recent files and folders** radio button and click **Next**.



This will launch a window showing the root directory structure of the My Backup folder for the user connected to the Shared Storage Drive.



To restore files, simply drag and drop (cut/copy and paste) files/folder from the Shared Storage Drive to your computer.

SimpleView™ Storage and Backup Status:

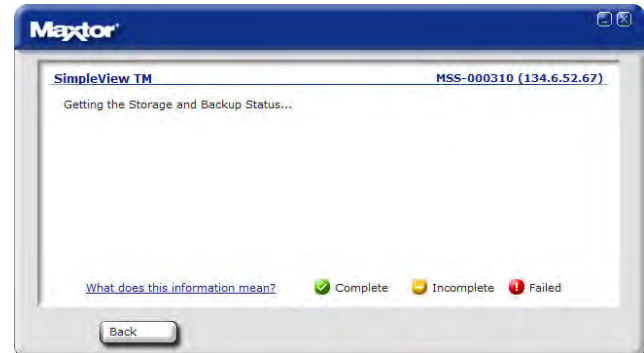
To check the status of your last backup:

Launch the Maxtor Quick Start program and click on **BACKUP & RESTORE**.

Click on **SimpleView™ Storage & Backup Status**.



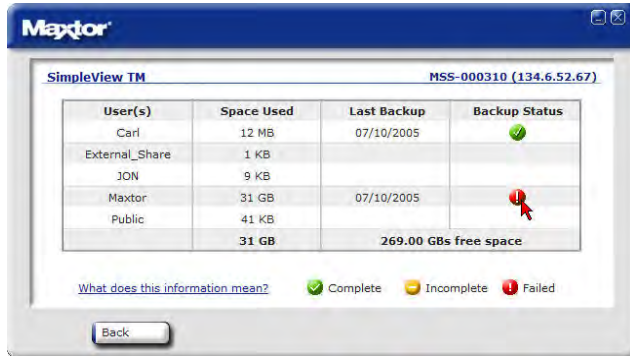
The SimpleView™ Storage & Backup Status window appears and acquires the necessary information.



This SimpleView™ screen provides you with an overview of each user:

Table 2:

Space Used	Total size of all user's files
Last Backup	Date of user's last backup
Backup Status	Success of user's last backup



This information is displayed via backup status indicators (icons) in the Backup Status column.

Backup Status Indicators Definitions:

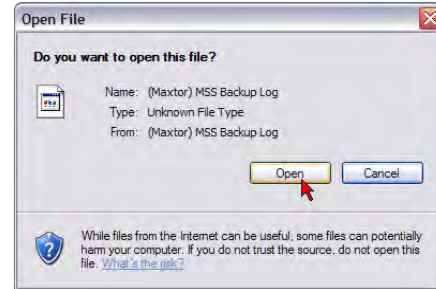
Table 3:

Color	Status	Meaning
Green checkmark	Complete	All files successfully backed up
Yellow minus	Incomplete	Some files backed up
Red exclamation mark	Failed	No files backed up

Backup Log File

You can see the details of a backup by reading the log file. To view the log file, click the colored status indicator in the **Backup Status** column.

Depending on your operating system, you will be prompted with Open File window...if so, click on the **Open** button.



This will launch your system's text editor (e.g., Notepad) and show you information regarding the backup in question. Below is an excerpt from a log file:

```

*****
Tuesday, July 05, 2005, at 08:16
\\MSS-000310\Maxtor\My Backup Destination is not accessible
\\MSS-000310\Maxtor\My Backup Destination is not accessible
\\MSS-000310\Maxtor\My Backup Destination is not accessible
  
```

File Maintenance:

Launch the Maxtor Quick Start program and click on **BACKUP & RESTORE**.

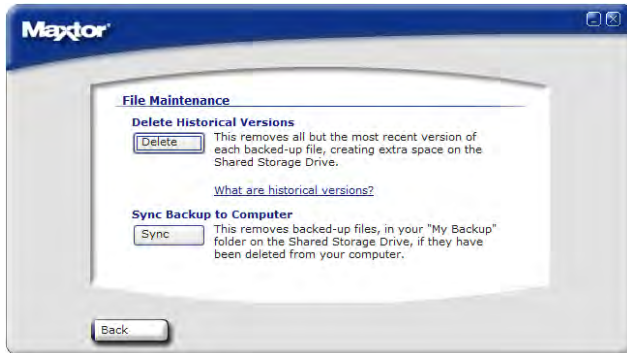
Click on **File Maintenance**.



The File Maintenance window appears. From this window, you can:

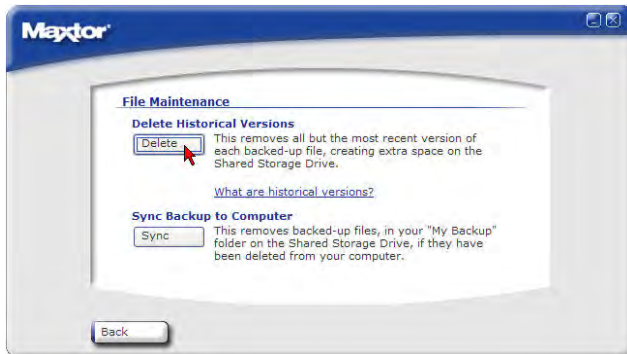
Delete Historical Versions – This will remove all but the most recent version of each backed up file – thus freeing up space on the Shared Storage Drive.

Sync Backup to Computer - This removes backed-up files in your “My Backup” folder on the Shared Storage Drive if the files have been deleted from your computer.

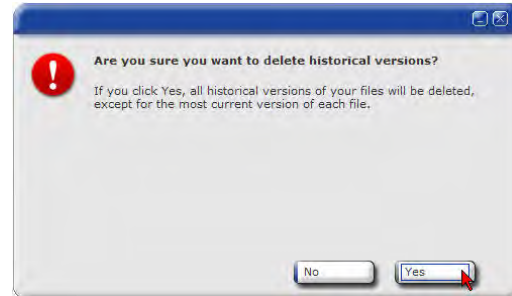


To delete historical file versions:

Click on the **Delete** button.



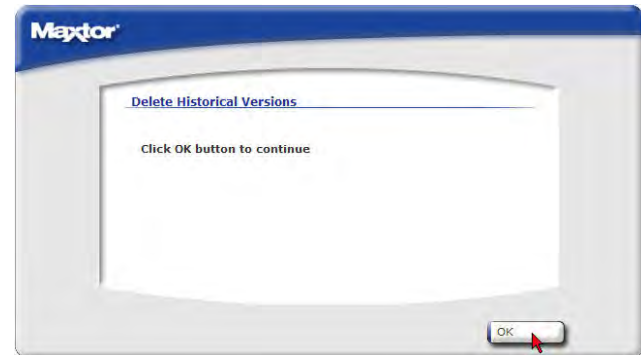
You will be prompted with the following:



Click **Yes** to proceed.

Warning: This is a data destructive process. All historic versions of files except for the most recent version will be deleted from your Shared Storage Drive!

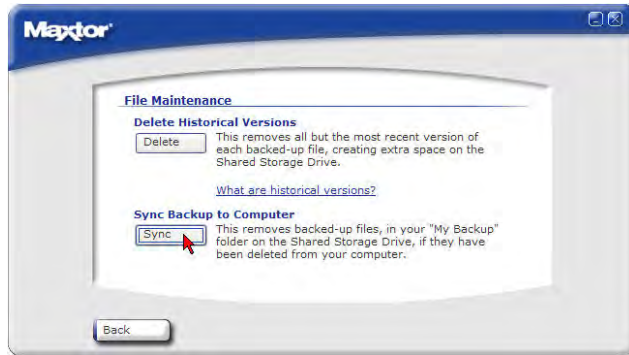
Click **OK** to continue.



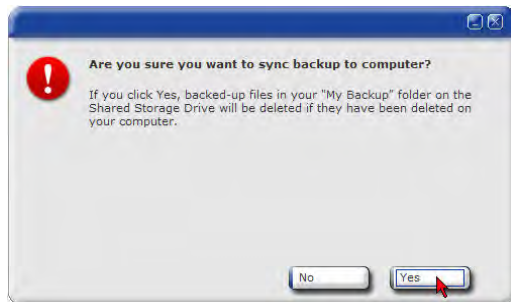
You will be returned to the File Maintenance window.

To Sync Backup to Computer:

Click on the **Sync** button.



You will be prompted with the following:



Click **Yes** to proceed.

Warning: This is a data destructive process. All historic versions of files except for the most recent version will be deleted from your Shared Storage Drive!



You will be returned to the File Maintenance window.

Drive Management:

This feature will do the following:

- Configure Drag and Sort settings
- Access the Shared Storage Drive's Web UI (User Interface) via Advanced Settings
- Review the Storage and Backup Status on your Shared Storage Drive



Drag and Sort Settings:



The Drag and Sort feature automatically sorts files into a set of folders inside your personal folder or the public folder. Every time you drag files to your Shared Storage Drive, each file is sorted into the appropriate folder based on its file type.



By default, the Drag and sort feature is turned On and files will sort into the My personal folders.

To disable Drag and Sort settings:

Launch the Maxtor Quick Start software and click on **DRIVE MANAGEMENT**.

Click on **Drag and Sort**.

Click on the **Off** radio button and click **Save**.



At this point, the Drag and Sort feature is turned off and you are returned to the Drive Management window.

To enable Drag and Sort settings:

Launch the Maxtor Quick Start software and click on **DRIVE MANAGEMENT**.

Click on **Drag and Sort**.

Click on the **On** radio button and click **Save**.



At this point, the Drag and Sort feature is turned on and you are returned to the Drive Management window.

To sort files into Our Public Folder:

Launch the Maxtor Quick Start software and click on **DRIVE MANAGEMENT**.

Click on **Drag and Sort**.

Click on the Sort files into "Our" public folder radio button and click **Save**.



At this point, the Drag and Sort feature is configured to copy files to "Our" public folder and you are returned to the Drive Management window.

Sorted File Types:

A complete list of default, sorted file types can be found via the Help Menu. Click on the "**Which file types work and how are they sorted?**" link for more information.



The Sorted File Types list can be configured to meet your needs. Refer to the Troubleshooting Tips and FAQs found at the end of this Guide for details.

Advanced Settings:

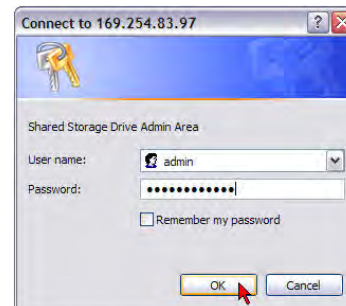
This option launches the Shared Storage Drive Web UI. This interface allows you to perform various tasks ranging from user and share management, configuring USB devices and network options, setting power management and running diagnostics, etc. To access the Web UI:

Launch the Maxtor Quick Start software and click on **DRIVE MANAGEMENT**.

Click on **Advanced Settings**.



At this point, your Web Browser launches. Type in your **Administrative username** and **password** for authentication and click **OK**.



The **Shared Storage Drive - Home Page** Launches

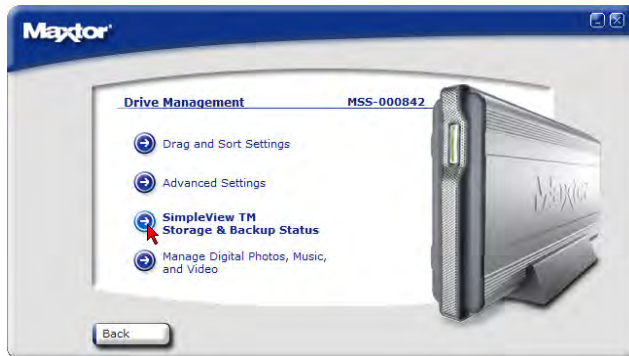


Note: See Using Your Shared Storage Drive – The Web User Interface for more information

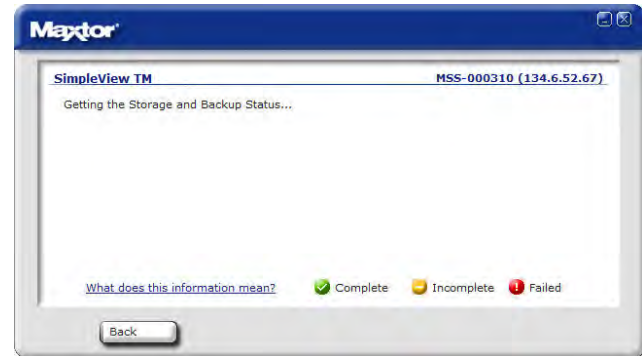
SimpleView™ Storage & Backup Status:

Launch the Maxtor Quick Start software and click on **DRIVE MANAGEMENT**.

Click on **SimpleView™ Storage & Backup Status**.



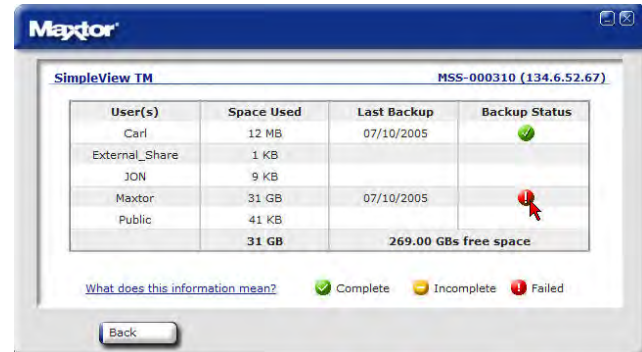
The **SimpleView™ Storage & Backup Status** window appears and acquires the necessary information.






This SimpleView™ screen provides you with an overview of each user:

Table 4:

Space Used	Total size of all user's files
Last Backup	Date of user's last backup
Backup Status	Success of user's last backup



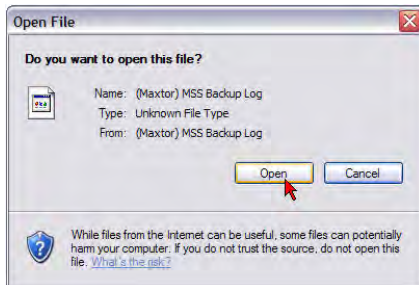
This information is displayed via backup status indicators (icons) in the Backup Status column. Backup Status Indicators Definitions:

Color	Status	Meaning
	Complete	All files successfully backed up
	Incomplete	Some files backed up
	Failed	No files backed up

Backup Log File

You can see the details of a backup by reading the log file. To view the log file, click the colored status indicator in the Backup Status column.

Pending on your Operating System, you will be prompted with Open File window...if so, click on the **Open** button.



This will launch your system's text editor (e.g., Notepad) and show you information regarding the backup in question. Below is an excerpt from a Log File:

```
*****
Tuesday, July 05, 2005, at 08:16
\\MSS-000310\Maxtor\My Backup Destination is not accessible
\\MSS-000310\Maxtor\My Backup Destination is not accessible
\\MSS-000310\Maxtor\My Backup Destination is not accessible
```

Manage Digital Photos, Music, and Video:



Note: This feature is only functional if you have UPnP Audio/Video device connected to your network through the Router used by the Shared Storage Drive.

Launch the Maxtor Quick Start software and click on **DRIVE MANAGEMENT**.

Click on **Manage Digital Photos, Music and Video**.

This will launch the Web UI and take you to the following page. Click **Next**.



Select the shared folders that will be searched for music, videos and/or pictures and click **Next**.



Note: You can only check one (1) iTunes folder at any given time
Click **Done** to return back to the Shared Folders Management Page.



Note: See Manage Digital Photos, Music, and Video on pg xx for more information on Media Server

Windows System Tray Access

You can access the Maxtor Quick Start Setting through the Windows System Tray. When installed, the Quick Start Software creates an icon in the computer's System Tray that shows the connectivity and the backup status of your user files to the Shared Storage Drive.

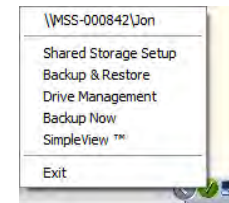


Example of System Tray Icon

The following Table defines the meanings of the System Tray Icons:

Color	Status	Meaning
	Complete	All files successfully backed up
	Incomplete	Some files backed up
	Failed	No files backed up
	Not Connected	Shared Storage is not connected/recognized by the computer

Click on the System Tray Icon to access its menu.

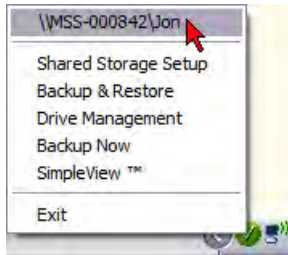


Feature available are:

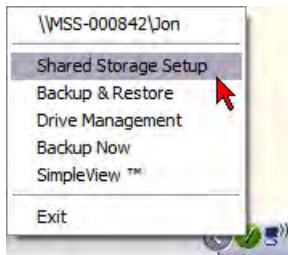
- Shared Storage Name and User Share Path
- Shared Storage Setup
- Backup & Restore
- Drive Management
- Backup Now
- Storage & Backup Status (soon to be called SimpleView)
- Exit

All feature found in the Quick Start software can readily accessed through this System Tray Icon.

The Top Option shows the name of the Shared Storage Drive and the UNC (Universal Naming Convention) path for the User. In the example below, you see that the Shared Storage Name is **MSS-000842** and that the **Maxtor** user's share is accessible from this computer.



Shared Storage Setup – allows you to create Users, set Public or Private Folder status and set Administrative Password.



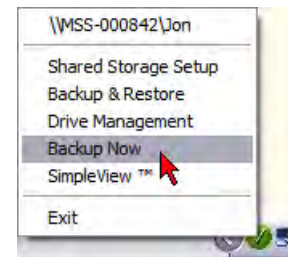
Backup & Restore allows you to Set Backups, Restore Files, check Storage and Backup Status and perform File Maintenance.



Drive Management allows you to configure Drag and Sort Settings, access the Web UI and check Storage and Backup Status.



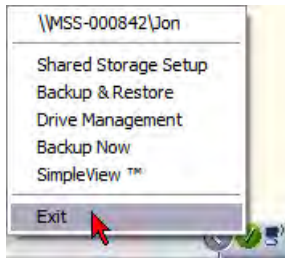
Backup Now, when selected will launch an immediate backup of the computer's selected files/folders and copy them to the Shared Storage Drive.



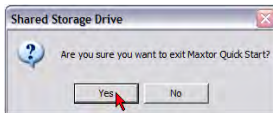
SimpleView™ allows you to review the Storage and Backup Status on your Shared Storage Drive.



Exit allows you to close the Quick Start program in the system Tray.



When you click on **Exit**, you will be asked you're sure that you want to exit Maxtor Quick Start.



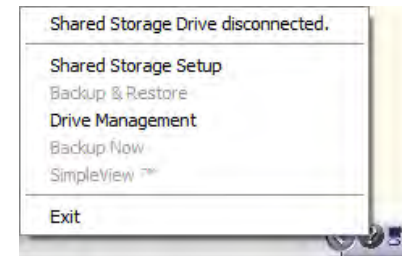
Click **Yes** to close the program. At this point, the icon will be removed from the Windows System Tray.

To Launch the Quick Start's System Tray status (if it has been shut off):

Click **Start → Programs** (all programs for Windows XP) → **Maxtor → Maxtor Quick Start – Status**. The System Tray icon will return to the System Tray.



Note: If the Shared Storage Drive is not connected or recognized (as identified by a grey icon with a "?"), the top field will show that the drive is disconnected; neither Backup & Restore, Backup Now, SimpleView™ Status features will be accessible for use.



The Web UI

The Web User Interface (Web UI) is used for the following actions:

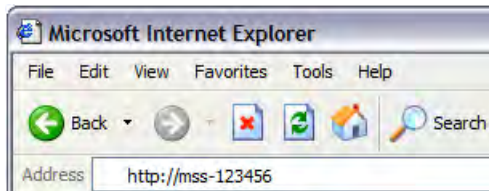
- Setup the Shared Storage Drive (Language, Date/Time Settings, Administrative Password, etc.)
- Create/Manage User Accounts
- Create/Manage Shared Folders
- Advanced Settings - Configure Network Settings, adjust power settings, perform diagnostics, setup USB Devices (external drives, printers)
- View Drive Status

Accessing the Web UI

The Web UI can be accessed via the following methods:

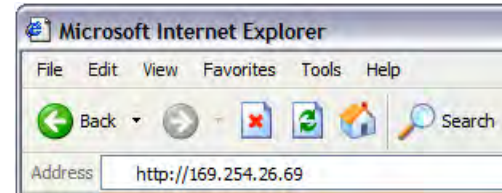
1. Through your Browser Application
 - a. By Network ID – Each Shared Storage Drive has its own Network ID. The Network ID is located on the label located on the back panel of the Shared Storage Drive. Locate the label on the back panel and find the text, MSS Network ID: mss-xxxxx; “mss-” are the first four characters found at the beginning of each Network ID and the “x” are denoted by numeric characters – for example, 123456; then to access the Web UI:
 - Launch your computer’s web browser (e.g., Microsoft Internet Explorer, Macintosh Safari, etc.) and type the following in the Address Field: <http://mss-xxxxx/>

For example, if the Shared Storage Drive’s Network ID is 123456, you would type: <http://mss-123456/>

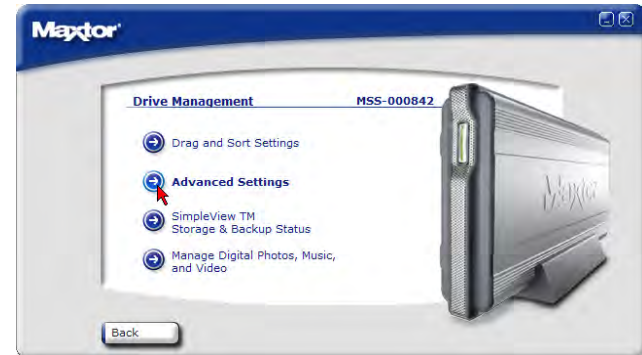


- b. By IP Address – Each Shared Storage Drive has its own IP Address, whether it is Static, assign from a DHCP Server or by default via Automatic Private IP Addressing (APIPA). To launch the Web UI via

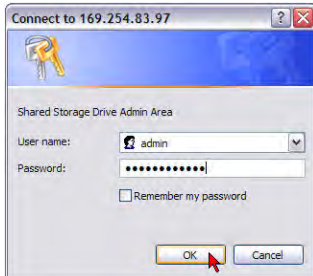
its IP Address if the Shared Storage Drive’s address is 169.254.26.69, you would type: <http://169.254.26.69>



2. Through the Maxtor Quick Start software – You can launch the Web UI from the Quick Start software. To do so:
 - a. Launch the Maxtor Quick Start software.
 - b. Click **DRIVE MANAGEMENT** → **Advanced Settings**.



- c. At this point, your Web Browser launches. Type in your **Administrative username** and **password** for authentication and click **OK**.



The Shared Storage Drive – Home Page opens in your Browser.



The Web UI is used to administrate the Shared Storage Drive via a simple, but thorough web interface. In the following pages, you will learn how to use all features of the Web UI.

Run Set-up Wizard:

The Run Set-up Wizard will aid in the initial configuration of your Shared Storage Drive. From the Wizard, you can:

- Change the language used by the Web UI
- Set the Date/Time and adjust it for US or European Format
- Name your Shared Storage Drive and assign it to a Workgroup
- Create the Administrative Password to secure the administrative functionality of the Shared Storage Drive

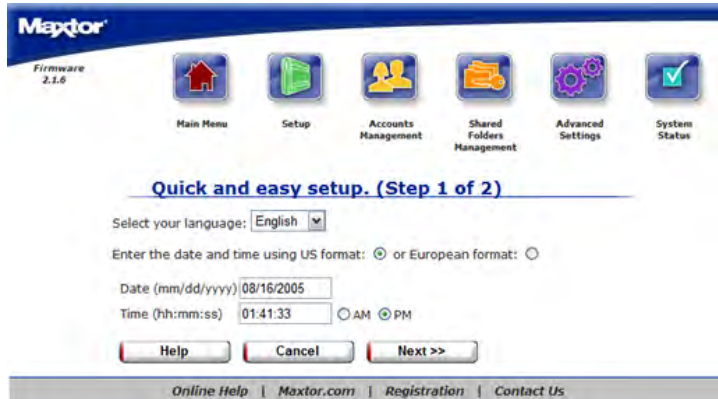
From the Maxtor Shared Storage Drive – Home Page click on **Run Set-up Wizard**.



The following page is displayed

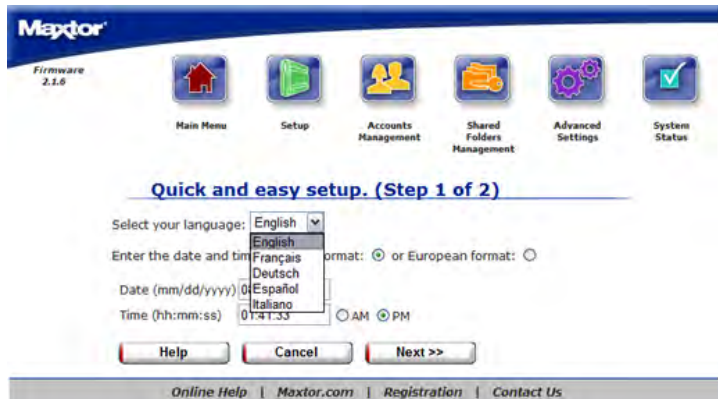
Step 1 of 2

Use this page to enter your language preference, today's date, and the current time. To change the date, and time, later, use the **Advanced, Language, Date and Time** settings page.



To select the Language:

1. Use the pull down menu and select the appropriate language.

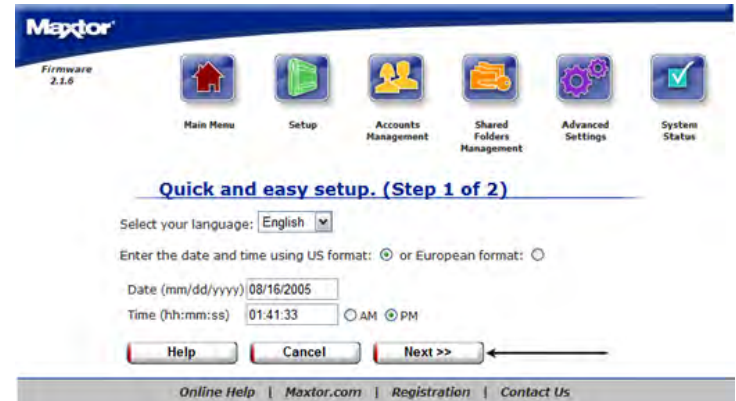


To set the date:

1. Type in the **Date** using the (mm/dd/yyyy) format.

To set the time:

1. Type in the current time using the (hh:mm:ss) format; make sure to indicate AM or PM.
2. Click **Next**.



Step 2 of 2

Use this page to assign the Shared Storage Drive a network name, identify the workgroup (Domain) to which it belongs, and to add/change the admin password for your Shared Storage Drive.

To set the name of your Shared Storage Drive:

1. Enter the name of your choice in the Name field.

To set the Workgroup (Domain) that you would like your Shared Storage Drive to be in:

1. Enter the **Workgroup** (Domain) name of your choice in the Workgroup field.

To set an Administrator password:

1. Select the radio button **Yes** indicating that you would like to have a password on the Administrator account.
2. Type in the **new password** and then verify the password by retyping it.
3. Click **Next**.

(Note: If you do not want an Administrator password on your Shared Storage Drive, just select the radio button NO indicating that you do not want to assign an Administrator password and then click **Next**.)

You will be prompted to authenticate using the Administrator's Name which is admin and type the newly created administrator password. Click **OK**.

Configuration Complete

After completing the Set-up wizard you should see a Congratulations message followed by an overview of all of the settings that were made. Please take a minute to either print or write down the information in your users guide for future reference.

To print the summary of your Shared Storage Drive:

1. Click on the **print icon** below the information.
2. When finished printing or writing down the information click **OK** to return to the Shared Storage Home Page.

Accounts Management

Overview

Use the Accounts Management link to manage the way people access and store information on your Shared Storage Drive.

The Accounts Management page is where you can:

- Create a New User Account
- Modify Account settings and Sharing Privileges.
- Delete User Accounts.



Using the Accounts Management Pages

- Select what action you would like to do.
- If you want to redisplay a page (to change something you entered on it, for example), click **Back**.
- After making a change click **Next**.

Go back and forth between pages until you are satisfied that the information is correct.

- To stop and lose your changes, click **Cancel**.

You can stop at any time.

Creating a New User Account

Add a user to your Shared Storage Drive and you want someone to have a particular level of access to information in a share. You can then define the appropriate level of access for that user to that information.

When Shared Storage Drive is installed, it includes an Admin user by default. Admin is the user name you or whoever else administers Shared Storage Drive use to log in to exercise administrative privileges.

(Note: This is the only account that will allow you to login to the Web administration portion of the Shared Storage Drive)

To add a user:



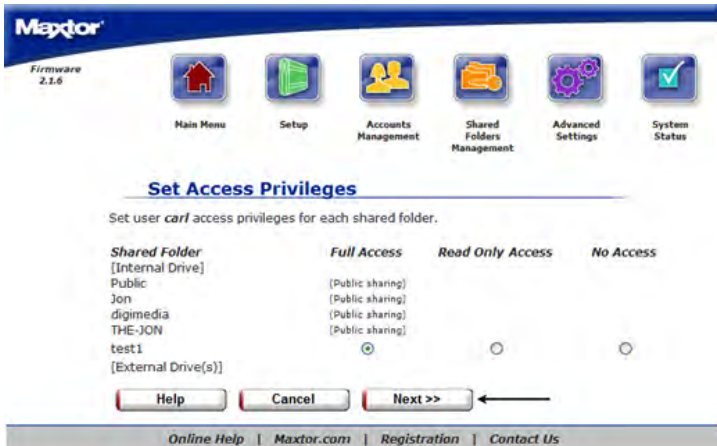
1. Click **Create A New User Account**.
2. Type the **user name** in the name field. (**Note:** The name must have alpha numeric characters and can be a maximum length of thirty two characters.)
3. Type a **password** in the Password field. You must enter a password for the user in order to continue.

4. Click **Next**.



5. Set the permissions for the user account by selecting the appropriate radio buttons for the folders that you want the user to have access to. (**Note:** By default the user has permissions to all Shared folders on the Shared Storage Drive.)

6. Click **Next**.



7. A screen will appear showing that the user was created.



8. Click **OK** to return to the Accounts Management Page.

The user is added and should immediately have access to the Shared Storage Drive.

Modify Account Settings and Shared Privileges

Use this page to change a password as well as modify what shared folders a user has access to on pre-existing accounts. (**Note:** The Admin account always has access to every folder on the Shared Storage Drive.)

To change folder permissions:

1. Click **Modify Account Settings** and **Shared Privileges**.



- Find the user to modify the permissions for and click on **Modify**.

Modify Account Settings

Select **Modify** to change access privileges.
Select **Change** to change the password of the corresponding user.

Account	Account Type	Folder Access Privileges	Password
admin	Administrator	(Not Applicable)	<input type="button" value="Change"/>
test	User	<input type="button" value="Modify"/>	<input type="button" value="Change"/>
NewUser	User	<input type="button" value="Modify"/>	<input type="button" value="Change"/>
carl	User	<input type="button" value="Modify"/>	<input type="button" value="Change"/>

Online Help | Maxtor.com | Registration | Contact Us

- Set the permissions** for the user account by selecting the appropriate radio buttons for the folders that you want the user to have access to.

Set Access Privileges

User Name: **carl**

Select the folders that the account will have access to.

Share Folders	Full Access	Read Only Access	No Access
[Internal Hard-Drive]			
Public	<input type="radio"/>	<input type="radio"/>	<input type="radio"/>
Jon	<input type="radio"/>	<input type="radio"/>	<input type="radio"/>
digimedia	<input type="radio"/>	<input type="radio"/>	<input type="radio"/>
THE-JON	<input type="radio"/>	<input type="radio"/>	<input type="radio"/>
test1	<input checked="" type="radio"/>	<input type="radio"/>	<input type="radio"/>
[External Device(s)]			

Online Help | Maxtor.com | Registration | Contact Us

- Click **Next**.
- A screen will appear notifying you that access privileges have been successfully modified.
- Click **OK** to return to the Accounts Management Page.

Access Privileges successfully modified

Access privileges for **carl** have been modified.

Online Help | Maxtor.com | Registration | Contact Us

To change the password on a user account:

- Click **Modify Account Settings** and **Shared Privileges**.

Account Management

-
-
-

Online Help | Maxtor.com | Registration | Contact Us

- Find the user to modify the permissions for and click on **Change**.



- Enter the **new password** for the user.
- Confirm the password by re-entering it. (**Note:** If the passwords do NOT match an error message will appear.)



- Click **Next**.
- A screen will appear notifying you that the password has been successfully changed

- Click **OK** to return to the Accounts Management Page.



Delete User Accounts

To Delete a User Account:

- Click **Delete User Accounts**.



2. Find the user that you would like to remove and click on **Delete**.



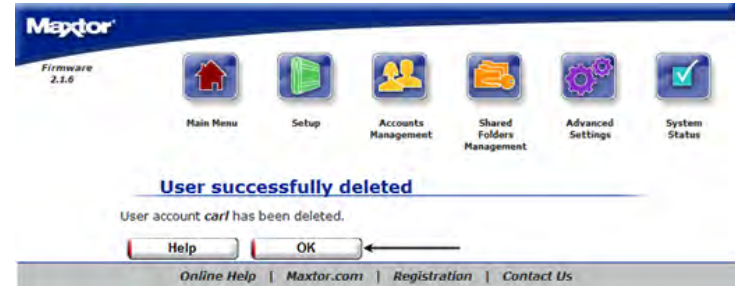
3. Confirm that you selected the correct user account to delete.



4. Click **Yes**.

5. A screen will appear notifying you that the user was successfully deleted

6. Click **OK** to return to the Accounts Management Page.



Note: A User Folder will still remain on the Shared Storage when the User Account has been deleted. Reference Shared Folders Management for the procedure used to delete a shared folder.

Shared Folders Management

Overview

Use the Shared Folders Management page to manage the way people access and store information on your Shared Storage Drive.

The Shared Folders Management page is where you can:

- Create a New Shared Folder
- Modify Shared Folder Access Privileges.
- Delete, Suspend or Re-Activate Shared Folders.
- Manage Digital Photos, Music and Video for UPnP Audio/Video players connected to you home/office network

Using the Shared Folders Management Page



- Select what action you would like to do.
- If you want to redisplay a page (to change something you entered on it, for example), click Back.
- After making a change click **Next**.

Go back and forth between pages until you are satisfied that the information is correct.

- To stop and lose your changes, click **Cancel**. You can stop at any time.

Create a New Shared Folder

To Create a New Public Shared Folder:

If you create a share that has Public access this means that all users will be able to access the folder as well as read and write to the folder.

1. Click **Create a New Shared Folder**.



2. Type in the **desired name** for the new shared folder. (**Note:** the Name can be no longer than 32 Characters)

- Set the access privileges at:
 - Public shared folder if you would like everyone to have access.



- Click **Next**.
- You will see confirmation that the share was successfully created. Click **OK** to go back to the Shared Folders Management Page.



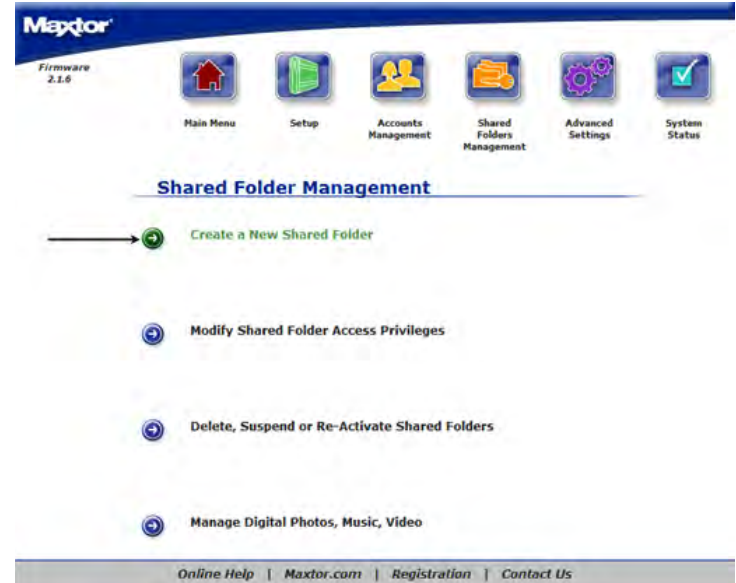
Click **New** if you want to create another Share on your Shared Storage Drive.



To Create a New Defined Access Shared Folder:

If you Define the shared folder access you will be able to limit the users that can access the Shared Folder.

- Click **Create a New Shared Folder**.



2. Type in the desired name for the new shared folder. (**Note:** the Name can be no longer than 32 Characters)
3. Set the access privileges at:
 - Define shared folder access privileges if you would like to limit User access to this share.



4. Click **Next**.



5. Set User Access for the share by selecting the appropriate radio buttons for the users that you want to have access to the folder.

- **Full Access** - This will allow the selected user to Read, Write, and Create new files in the selected Shared Folder
- **Read Only Access** - This will allow the selected user to only read the files in the selected shared folder
- **No Access** - This will allow NO access to the selected shared folder.

6. Click **Next**.
7. You will see confirmation that the share was successfully created. Click **OK** to go back to the Shared Folders Management Page.



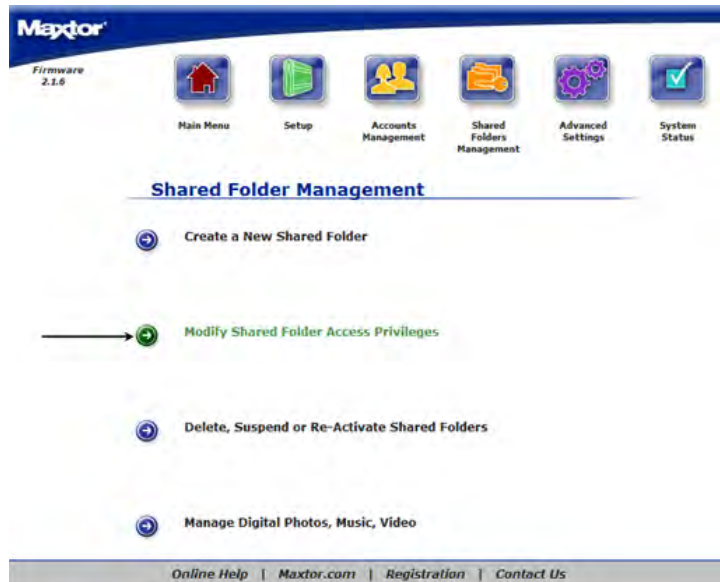
Click **New** if you want to create another Share on your Shared Storage Drive.



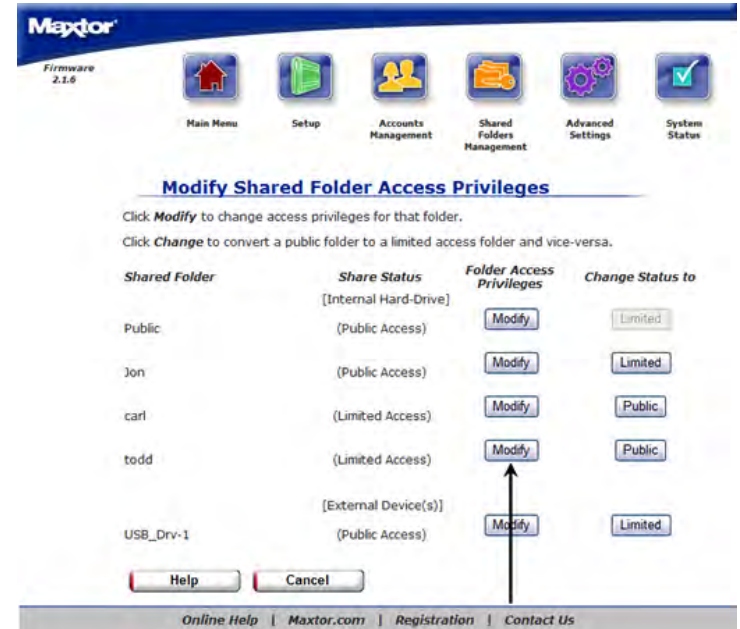
Modify Shared Folder Access Privileges

To change folder permissions:

1. Click **Modify Shared Folder Access Privileges**.



2. Find the **Share** to modify the permissions for and click **Modify**.



3. **Set the permissions** for the share by selecting the appropriate radio buttons for the users that you want to have access to the folder.

- **Full Access** - This will allow the selected user to Read, Write, and Create new files in the selected Shared Folder
- **Read Only Access** - This will allow the selected user to only read the files in the selected shared folder
- **No Access** - No access will allowed to the selected shared folder.



4. Click **Next**.

5. You will see confirmation that the share permissions were successfully set on the selected folder.

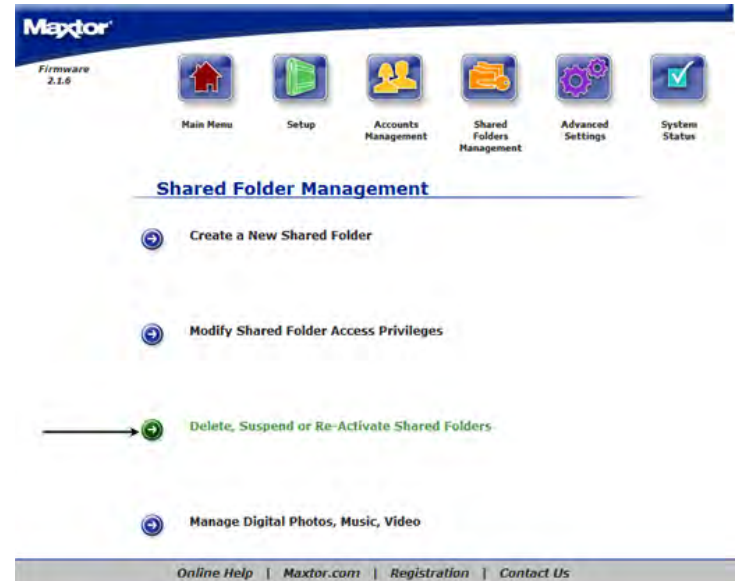
6. Click **OK**.



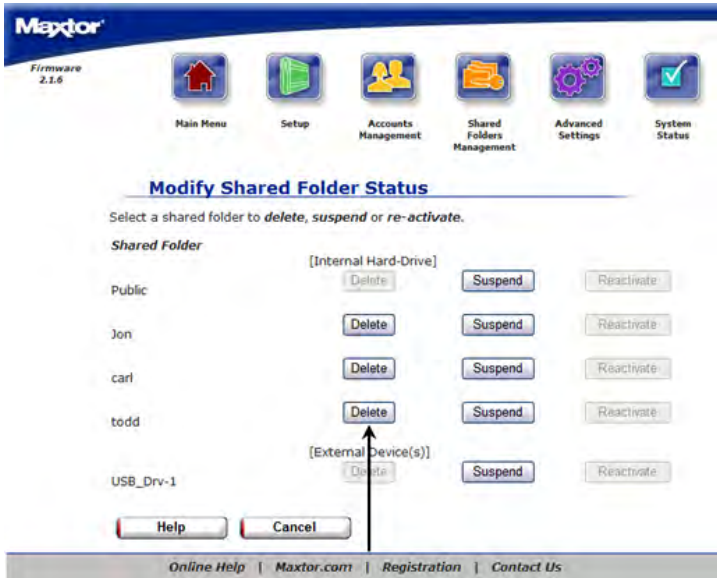
Delete, Suspend or Re-Activate Shared Folders

To Delete a Shared Folder:

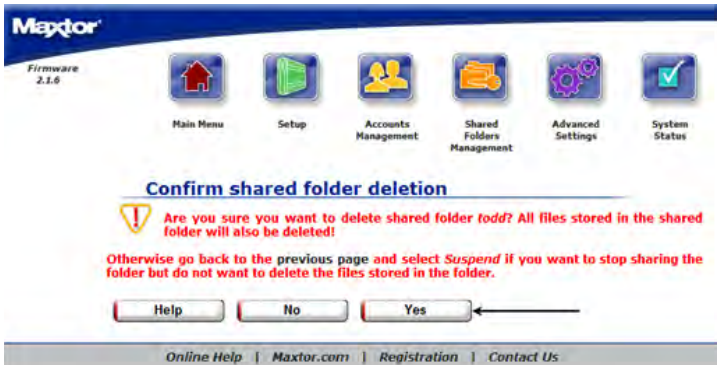
1. Click **Delete, Suspend or Re-Activate Shared Folders**.



2. Find the **Share** that you would like to remove and click **Delete**.

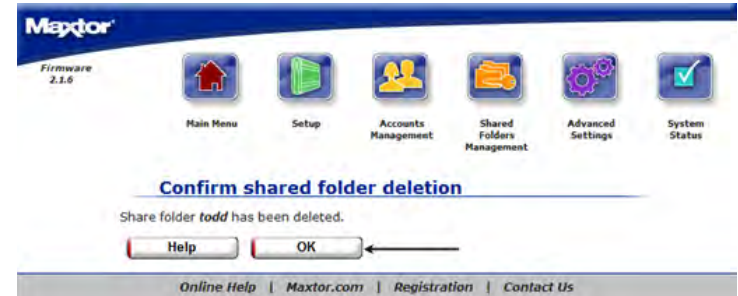


3. Confirm that you selected the correct **Shared Folder**.



4. Click **Yes**.

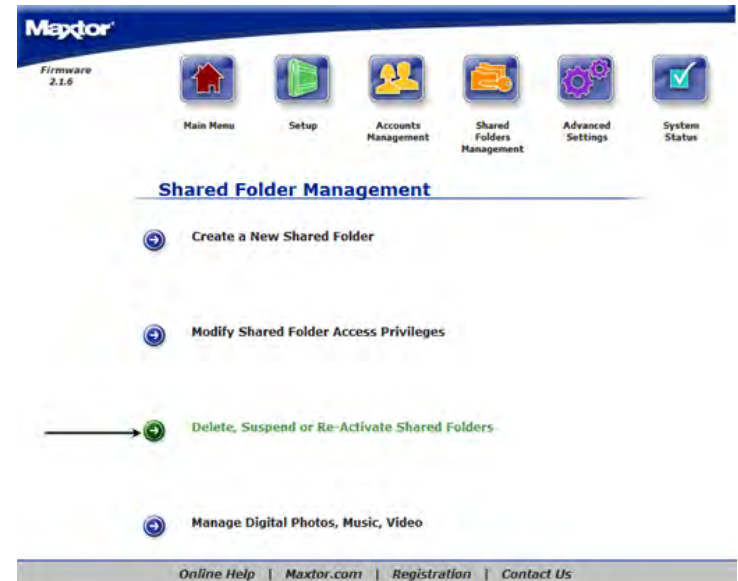
5. It will confirm that the selected **Shared Folder** has been deleted.



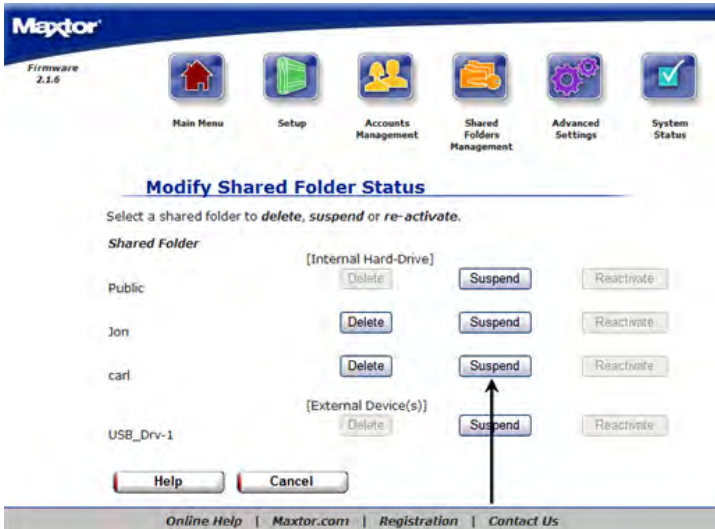
6. Click **OK** to return back to the Shared Folders Management Page.

To Suspend a Shared Folder:

1. Click **Delete, Suspend or Re-Activate Shared Folders**.



2. Find the Shared Folder to Suspend and click on **Suspend**.



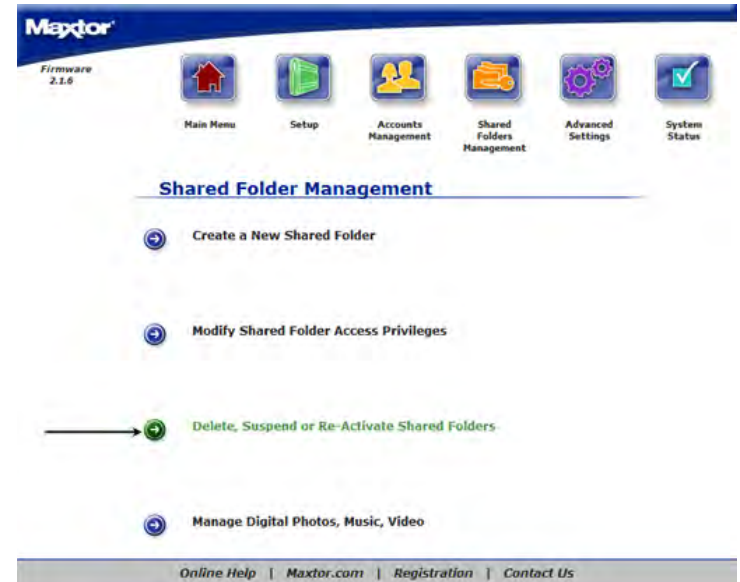
3. It will confirm that the selected Shared Folder has been suspended.



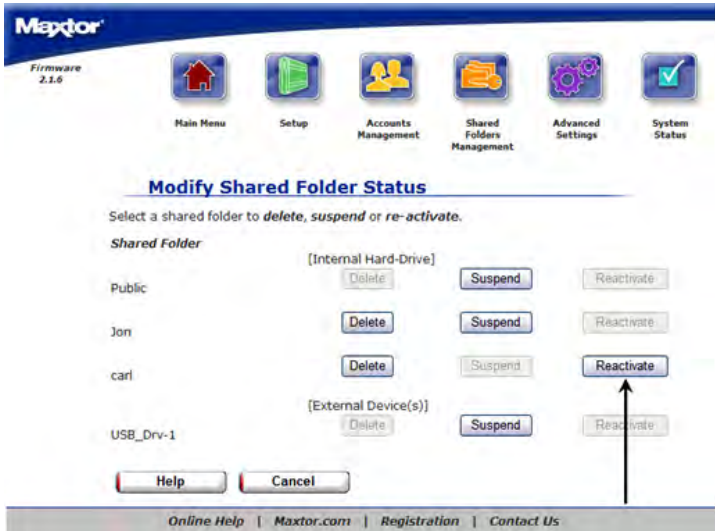
4. Click **OK** to return back to the Shared Folders Management Page.

To Re-Activate a User Account:

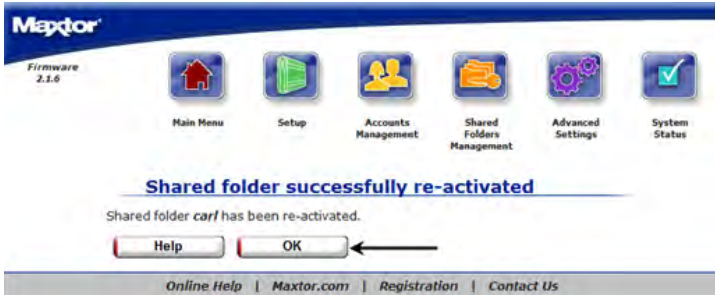
1. Click **Delete, Suspend** or **Re-Activate Shared Folders**.



2. Find the shared folder to Re-Activate and click on **Reactivate**.



3. It will confirm that the selected **Shared Folder** has been **Re-Activated**.



4. Click **OK** to return back to the **Shared Folders Management** Page.

Manage Digital Photos, Music, Video

Media server technology enables digital photo, music, and video playback to networked home entertainment systems. By default, the Media Server is Disabled.

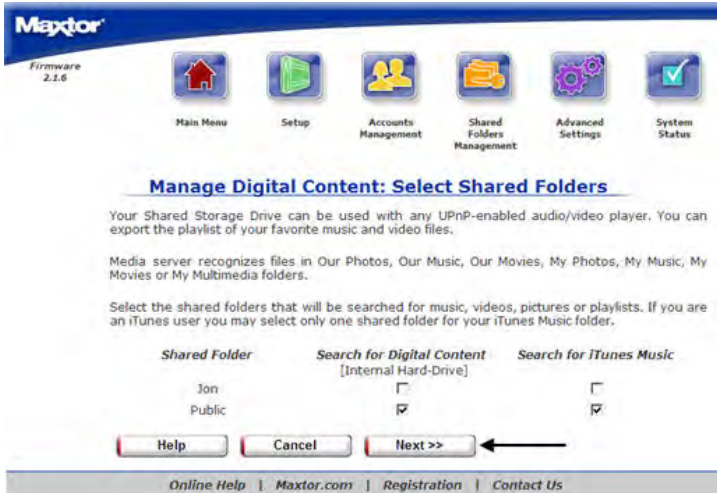
To Manage Digital Photos, Music and Videos:

1. Click **Manage Digital Photos, Music and Videos**.
2. Click **Enable Media Server**.



3. Click **Next**.

- Select the shared folders that will be searched for music, videos and/or pictures and click **Next**.



Note: You can only check one (1) iTunes folder at any given time.

- Click **Done** to return back to the Shared Folders Management Page.

To Refresh Media Server:

By default, the Media Server automatically searches for new media files every two (2) hours. To perform an immediate update to the Media Server database, you must refresh it.

- Click **Manage Digital Photos, Music and Videos**.
- Click **Refresh**. The Media server will refresh automatically in the background.



- Click **Done** to return back to the Shared Folders Management Page.



To Disable Media Server:

1. Click **Manage Digital Photos, Music and Videos**.
2. Click **Disable Media Server**.



3. Click **Next**.
4. Click **Done** to return back to the Shared Folders Management page.

Advanced Settings

Overview

Use the Advanced Settings Page manages the Language, Date, Time, and Network Settings. As well as run Diagnostics, set power management options, update the Shared Storage Drive software and manage any USB peripherals that you have attached to the Shared Storage Drive.



From the Advanced Settings you can:

- Set the Language, Date, and Time Settings
- Adjust Network Settings
- Run Diagnostics, set power management and update the software
- Manage any USB peripherals attached to the Shared Storage Drive

Using the Advanced Settings Pages

- Select what action you would like to do.
- If you want to redisplay a page (to change something you entered on it, for example), click **Back**.
- After making a change, click **Next**.

Go back and forth between pages until you are satisfied that the information is correct.

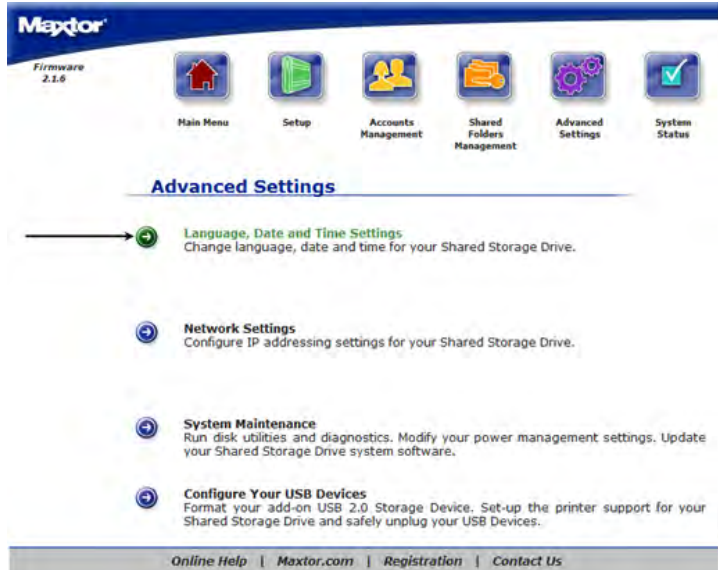
- To stop and lose your changes, click **Cancel**. You can stop at any time.

Language, Date and Time

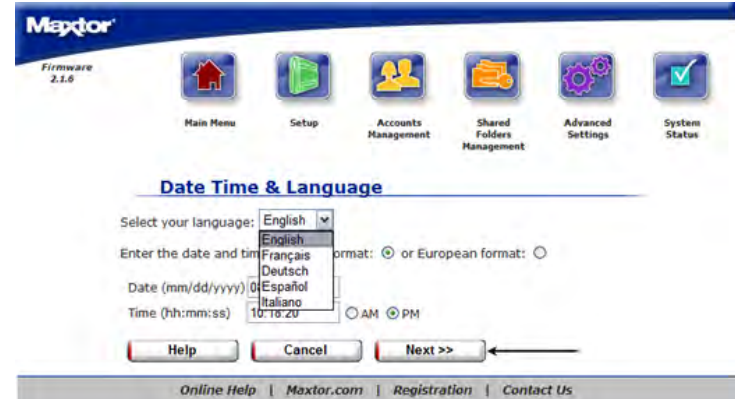
Enter your language preference, date, and current time values on these pages.

To select the Language:

1. Select **Language, Date** and **Time Settings**.



2. Use the pull down menu and select the appropriate language.



To set the date:

1. Type in the **Date** using the (mm/dd/yyyy) format.

To set the time:

1. Type in the **current time** using the (hh:mm:ss) format; make sure to indicate AM or PM.
2. Click **Next**.
3. You will see a page stating that the language, date and time settings were changed.



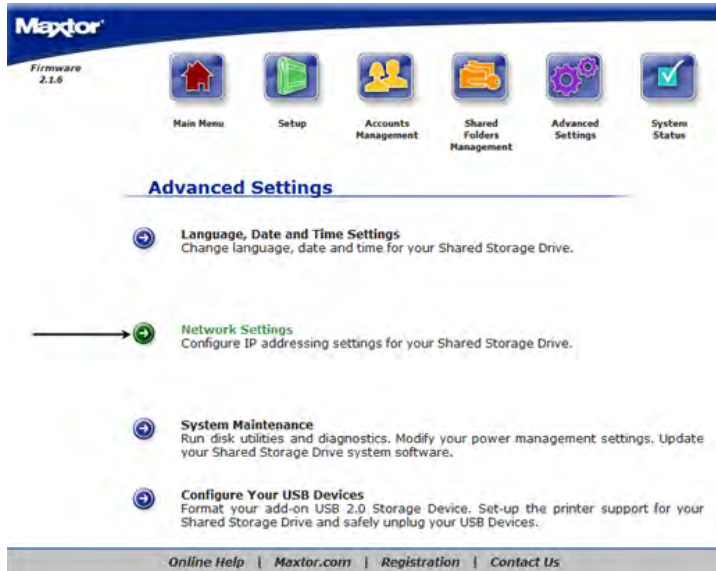
4. Click **Done** to return to the **Advanced Settings** Page.

Network Settings

Use this page to assign the file server a name, identify the workgroup to which it belongs, and to set the IP configuration of the Shared Storage Drive.

To set the name of your Shared Storage Drive:

1. Select **Network Settings**.

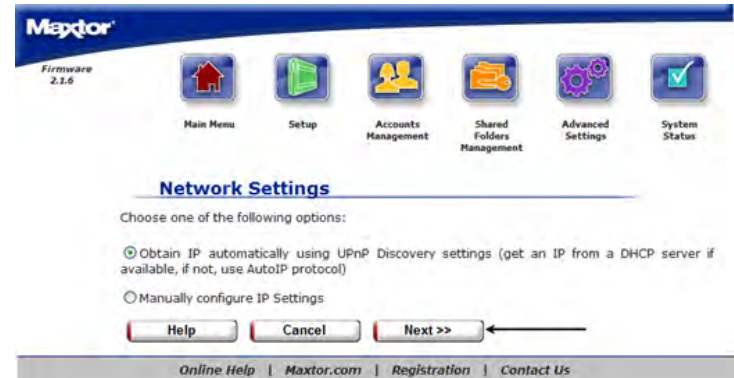


2. Enter a **name** for the Shared Storage Drive in the Name field.



To set the Workgroup that you would like your Shared Storage Drive to be in:

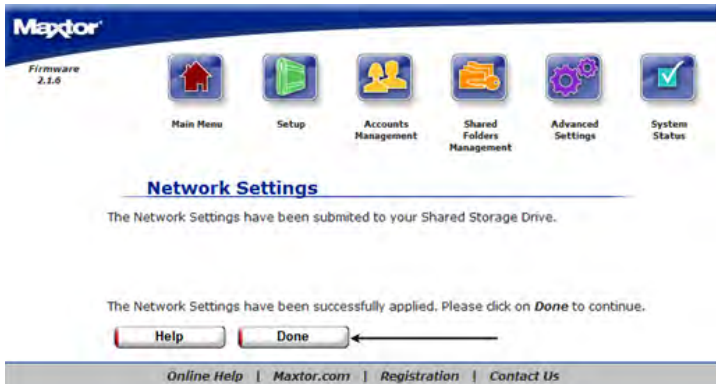
1. Enter the **Workgroup name** of your choice in the Workgroup field.
2. Click **Next**.



To set the IP address on the Shared Storage Drive using a DHCP server: (Default)

1. Select the radio button indicating that you would like to obtain an IP address from a DHCP server.
2. Click **Next**.

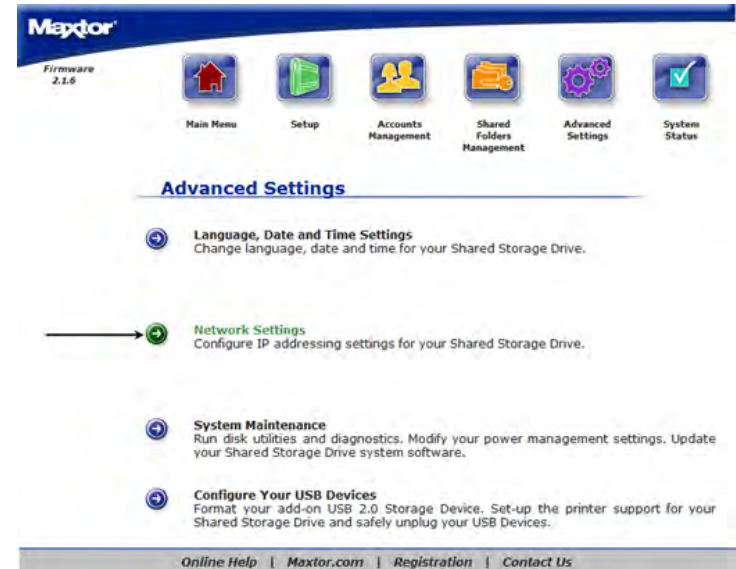
3. A message will appear indicating that the network settings have been submitted to the Shared Storage drive.



4. Click **Done** to return to the Advanced Settings Page.

To set the IP address on the Shared Storage Drive using a STATIC IP address: (Advanced users only)

1. Select **Network Settings**.



2. Select the radio button indicating that you would like to use **manual TCP/IP Settings**.

3. Enter the **IP Address**, **Subnet Mask**, and **Default Gateway**.

Maxtor
Firmware 2.1.6

Main Menu Setup Accounts Management Shared Folders Management Advanced Settings System Status

Network Settings

Choose one of the following options:

Obtain IP automatically using UPnP Discovery settings (get an IP from a DHCP server if available, if not, use AutoIP protocol)

Manually configure IP Settings

Drive IP Address:

Subnet Mask:

Default Gateway:

Help Cancel **Next >>**

Online Help | Maxtor.com | Registration | Contact Us

4. Click **Next**.

5. You will see a status and a message asking you to, "...stand by"

Maxtor
Firmware 2.1.6

Main Menu Setup Accounts Management Shared Folders Management Advanced Settings System Status

Network Settings

The Network Settings have been submitted to your Shared Storage Drive.

Please stand by while those new settings are applied.

Online Help | Maxtor.com | Registration | Contact Us

6. Once the network settings have been applied...

Maxtor
Firmware 2.1.6

Main Menu Setup Accounts Management Shared Folders Management Advanced Settings System Status

Network Settings

The Network Settings have been submitted to your Shared Storage Drive.

Please stand by while those new settings are applied.

The Network Settings have been successfully applied. Please click on **Done** to continue.

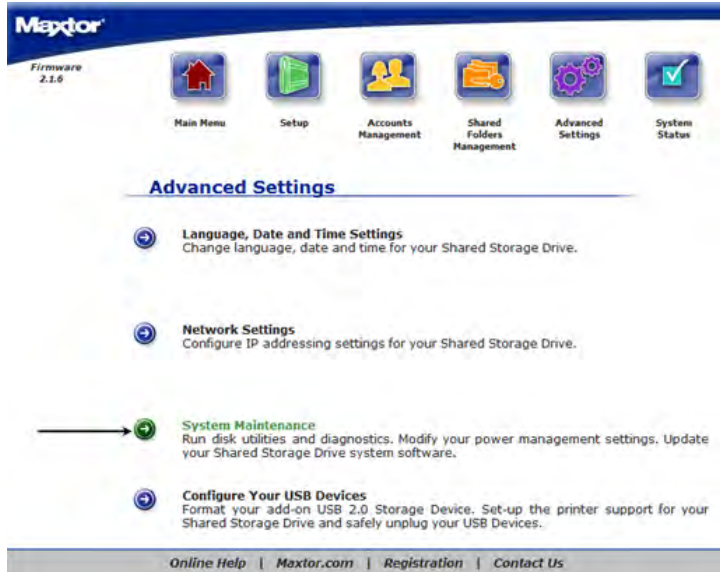
Help **Done**

Online Help | Maxtor.com | Registration | Contact Us

7. Click **Done** to return to the Advanced Settings Page.

System Maintenance

Use these pages to run disk utilities and perform diagnostics; modify power management settings, and to update your Shared Storage Drive software.



Maxtor
Firmware 2.1.6

Main Menu Setup Accounts Management Shared Folders Management Advanced Settings System Status

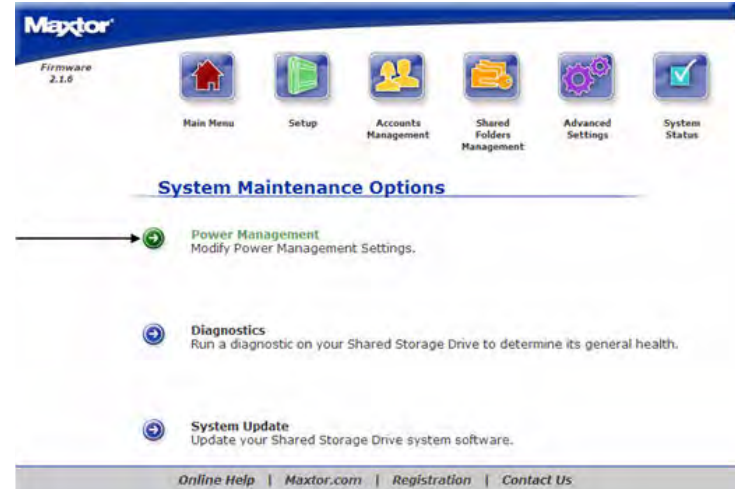
Advanced Settings

- Language, Date and Time Settings
Change language, date and time for your Shared Storage Drive.
- Network Settings
Configure IP addressing settings for your Shared Storage Drive.
- System Maintenance**
Run disk utilities and diagnostics. Modify your power management settings. Update your Shared Storage Drive system software.
- Configure Your USB Devices
Format your add-on USB 2.0 Storage Device. Set-up the printer support for your Shared Storage Drive and safely unplug your USB Devices.

Online Help | Maxtor.com | Registration | Contact Us

To change Power Management Settings:

1. Click **Power Management**.



Maxtor
Firmware 2.1.6

Main Menu Setup Accounts Management Shared Folders Management Advanced Settings System Status

System Maintenance Options

- Power Management**
Modify Power Management Settings.
- Diagnostics
Run a diagnostic on your Shared Storage Drive to determine its general health.
- System Update
Update your Shared Storage Drive system software.

Online Help | Maxtor.com | Registration | Contact Us

2. Select the **Drive** that you would like to apply power management settings to.

- Use the pull down menu to select the **time** which you would like the drive to sit idle before "Going to sleep".



(Note: By default, the Drive inactivity period is set to one hour.)



- Click **Next**.

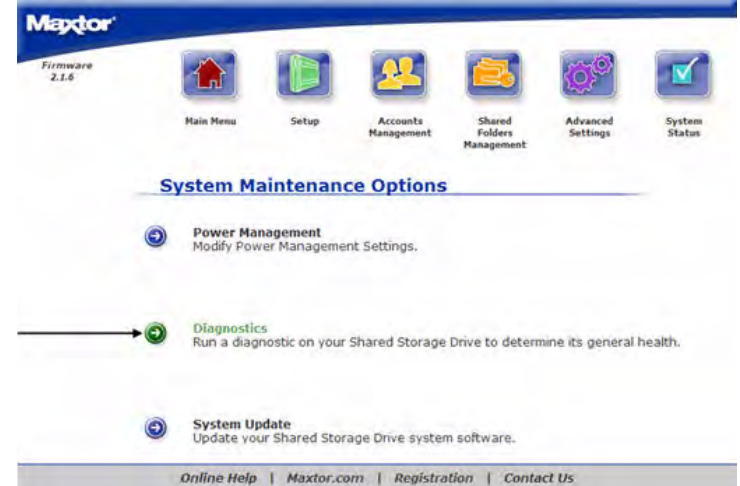
- It will confirm the amount of time that you set.



- Click **Done** to return to the **System Maintenance** Page.

To Run Diagnostics:

- Click **Diagnostics Scan and Repair**.



- A warning will appear notifying you that the Drive will be inaccessible to users while running.

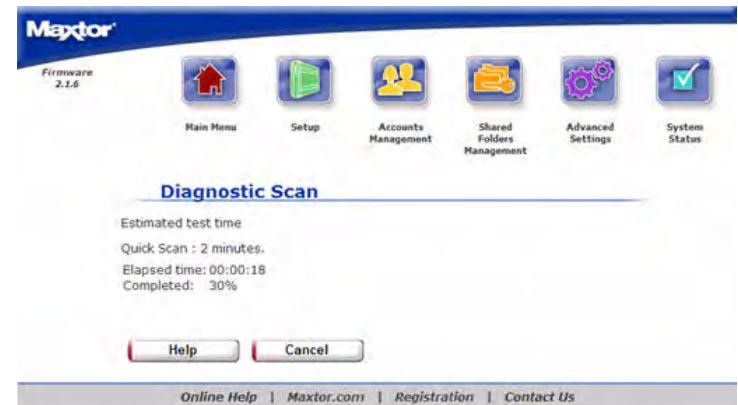


- Click **Next**.

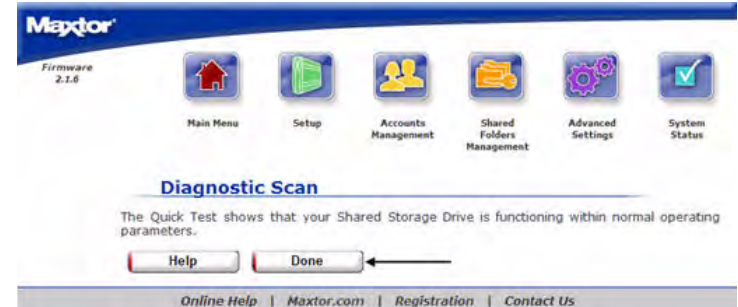


- The diagnostic feature inspects your hard drive for defects.
 - Click on **Proceed** to start the diagnostic process.
 - Click on **Cancel** if you would like to back up your data first. Selecting **Cancel** will require a re-test.

- A status bar will appear showing the status of the scan. The Diagnostic process takes between 2 - 5 minutes.



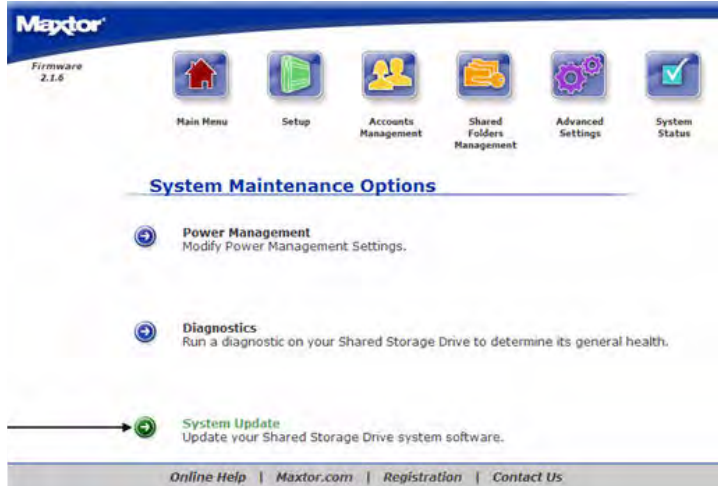
- Upon successful completion, a window appears notifying you that your Shared Storage Drive is functioning within normal operating parameters.



- Click on **Done** to return to the System Maintenance Options Page. If there are errors that are not repairable a screen will prompt you with a diagnostics code. Record this error code and contact Maxtor Technical Assistance.

System Update:

1. Click **System Update**.

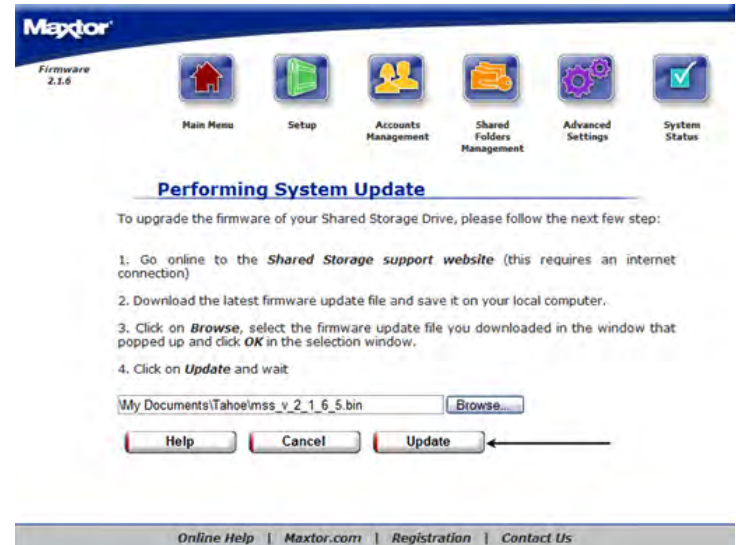


2. A warning will appear notifying you that the Drive will be inaccessible to users while running.



3. Click **Next**.
4. Follow the on screen instructions. This process does require a firmware download from the Maxtor website.

5. After the file is downloaded click on the Browse button and search for the firmware update.



6. Once the file is selected click **Update**.
7. A progress bar will show the status of the update. The unit does reboot during this process. You will have a countdown. Once the countdown is finished close your browser and then reopen it to the Shared Storage Drive Home Page.



8. Click **Done** to return to the **System Maintenance** Page.

Configure your USB Devices

Use these pages to configure USB Drives and to Manage USB printers plugged into the Shared Storage Drive.

Format USB Drive:

1. Click **Format USB Drive**.



Maxtor
Firmware 2.1.6.5

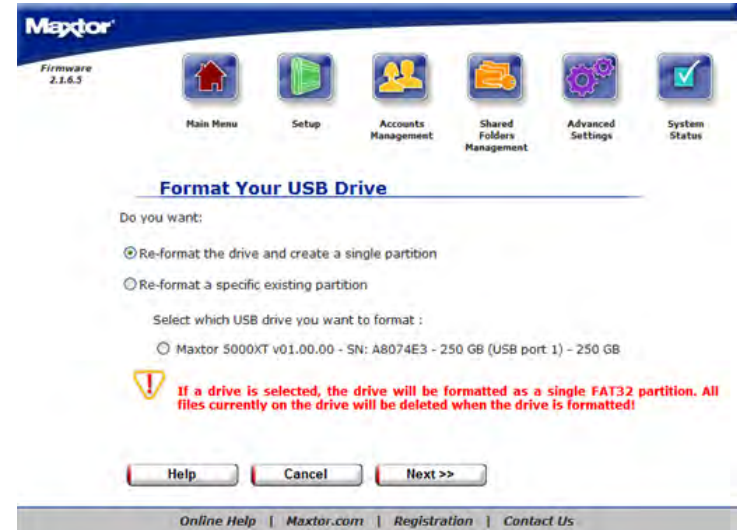
Main Menu Setup Accounts Management Shared Folders Management Advanced Settings System Status

Configure Your USB Device

- Format USB Drive**
Format your USB drive for use as additional storage. It is required if the USB Storage Device you want to connect is not formatted in FAT32, but you don't have to format a USB Storage Device that is already using FAT32.
- Printer Support Management**
Manage Printer Support of your Shared Storage Drive. You can enable or disable USB Printer support very quickly and easily.
- Unplug USB devices from the Shared Storage Drive**
Make sure to safely unmount the USB storage devices connected to your Shared Storage Drive before pulling the USB cable out to ensure the integrity of your data.

Online Help | Maxtor.com | Registration | Contact Us

2. Select the radio button indicating if you would like to:
 - Re-Format the drive and Create a Single Partition



Maxtor
Firmware 2.1.6.5

Main Menu Setup Accounts Management Shared Folders Management Advanced Settings System Status

Format Your USB Drive

Do you want:

- Re-format the drive and create a single partition
- Re-format a specific existing partition

Select which USB drive you want to format :

- Maxtor 5000XT v01.00.00 - SN: A8074E3 - 250 GB (USB port 1) - 250 GB

! If a drive is selected, the drive will be formatted as a single FAT32 partition. All files currently on the drive will be deleted when the drive is formatted!

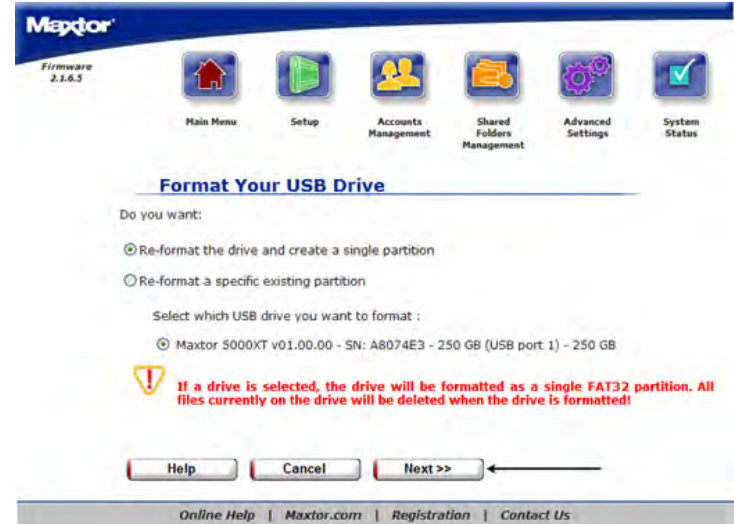
Help Cancel Next >>

Online Help | Maxtor.com | Registration | Contact Us

- Re-Format a specific existing partition



3. If necessary, select the partition you wish to format.



4. Click **Next**.

5. Enter a **Volume Name**.



6. Click **Next**.

7. A warning will appear stating that if you continue you will lose all of your data if you continue.



8. Click **Next**.

9. You will then see a status page with an elapsed time on it.



10. When the drive has finished formatting you will see a message that the USB drive has been successfully formatted.



11. Click **Done** to return to the **Configure Your USB Devices** Page.

Printer Support Management:

1. Click **Printer Support Management**.



2. You will see the current status of your printer Support. It will be Enabled or Disabled.

3. Depending on the state the button on the screen will read to opposite.

4. If the printer support is disabled and you want to Enable it, click **Enable**.



5. You will see a message stating that the **Printer Support is Enabled**.



6. Click **Done** to return to the **Configure Your USB Devices** Page.

7. If Printer Support is enabled and you want to Disable it, click **Disable**.



8. You will see a message stating that the **Printer Support is Disabled**.



9. Click **Done** to return to the Configure Your USB Devices Page.

Unplug USB Devices from the MSS

1. Click **Unplug USB devices from the MSS**.



2. It will list all of the USB devices currently plugged into the unit.
3. Click on the **Safely Remove** button next to the device that you would like to unplug.



4. A message will appear stating that you can remove the selected device.



5. Click **Done** to return to the **Configure Your USB Devices** Page.

System Status

Overview

Use the System Status page to get a summary of Your Maxtor Shared Storage Drive including IP address, Users and Shares, USB Devices and Printers attached to the unit.



The System Status page is where you can see your current:

- User accounts and shares
- Network Settings
- USB Devices attached
- Printers

System Status

User Accounts
Jon
carl
todd

Network Settings
Drive IP Address 192.168.1.105
Subnet Mask 255.255.255.0
Default Gateway 192.168.1.1

Click here to see Account(s) & Share(s) status

USB Devices Attached

Storage Devices	Capacity	Drive Partition(s)	File System
Maxtor 5000XT v01.00.00	245.1 GB	MSS+_EXT (245.1 GB)	FAT

Printing Devices

Manufacturer	Model	Serial
N.A.	NASPrinter1	N.A.

Online Help | Maxtor.com | Registration | Contact Us

User Accounts

This section will tell you the user accounts that are currently created on your Shared Storage Drive.

Network Settings

This section will tell you the Current Network configuration that is on your Shared Storage Drive including IP Address, subnet Mask, and default Gateway.

Accounts & Share Status

Click on this link to show a summary of the current accounts and what shares that those accounts have permissions to.

USB Devices

This section will tell you what type of devices are attached to the USB ports on the back of the unit. Supported devices are External USB Drives and USB flash drives.

Printing Devices

This section will tell you the current status of any printer that is attached to the unit including Manufacturer, Model and Serial Numbers.

Online Help

Your Shared Storage Drive has advanced help features. To access these files, click on the Online Help link at the bottom of the drive file screen.

Online Help | Maxtor.com | Registration | Contact Us

↓

This links you to the Maxtor Shared Storage Product Support page where you can find the latest product updates and information.

↓

This links you to the Maxtor.com homepage.

↓

This links you to the page where you can register your Maxtor Shared Storage Drive.

↓

Use this link to learn how to contact Maxtor Technical Support in your region.

Using External USB drives with your Shared Storage drive

There are two USB ports on the back of your drive which allow you to connect USB hard drives, such as the Maxtor OneTouch™ and Personal Storage 5000 drives.



The Maxtor Shared Storage Drive is only compatible with USB drives that are formatted with the FAT32* file system. *With the FAT32 file system, the size of a single file is limited to 4 GB on this type of partition.

Connecting a USB drive

You may connect a USB drive while your Shared Storage Drive is on. It will automatically recognize the drive.

You may also connect a USB drive while your Shared Storage Drive is off. It will be recognized the next time you turn your Shared Storage Drive on.

Accessing the external USB drive

1. Open your Shared Storage Drive by double-clicking its desktop icon.
2. Your external USB drive will appear as a folder on the Shared Storage Drive.

The name of this folder will correspond to the volume name of your external USB drive.

Disconnecting a USB drive

To disconnect a USB drive from your Maxtor Shared Storage Drive:

1. Go to the Maxtor Shared Storage Drive home page.
2. Click the **Advanced Settings** button.
3. Click **Configure Your USB Devices**.
4. Click **Unplug USB devices from the Shared Storage Drive**.
5. Click the **Safely Remove** button, next to the USB drive you want to disconnect. A message will appear informing you that your drive can be safely removed. Then click **Done**.
6. Disconnect your USB drive from the your Shared Storage Drive.

Using USB Printers with your drive

You may connect a USB printer to your Shared Storage Drive and share it with anyone on your network.

Connecting a USB printer

- Connect the USB printer while your Shared Storage Drive is on.
- The printer will appear in the list of shares displayed in the Printers and Faxes folder on your Shared Storage Drive.

To use the printer from a Windows PC, install the driver included with your printer on that specific Windows PC:

1. Under the Start menu, select **Control Panel** and then click **Printers and Other Hardware**.

The Printers and Other Hardware window will appear.

2. Click **View installed printers or fax printers**.

The printers or fax printers that you have installed on your computer should appear in this window.

3. Drag and drop the icon that corresponds to the printer you wish to install into the **Printers and Faxes** folder on your Windows PC.



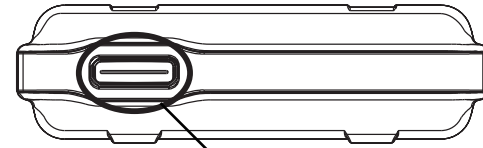
You will need your original printer install disk to install the printer driver on your Shared Storage Drive.

4. Follow the on-screen instructions to install your printer.

Shutting down your drive

To safely shut down your Shared Storage Drive:

Press and hold the button on the front of your drive for 5 seconds.



Press the button.

Figure 6. Shutting down your drive

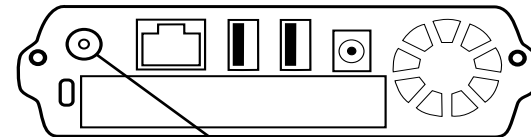
The button light will change from green to yellow, indicating that the drive is shutting down. When the light goes off, your drive is completely shut down.

Resetting your drive

If you can not access your drive after moving it to another network or turning it on after it has been off for a period of time, it may need to be reset.

To reset your drive:

- With the drive **turned on**, use a small pointed object, like the tip of a pen or paperclip, **press and hold** the **reset button** on the back of your drive until the button light turns **yellow**, and then release. (See figure 7).
- After a few seconds, the drive will reboot.
- When the light changes to **green**, the reset is complete and your drive is ready for use.



Press and hold the reset button.

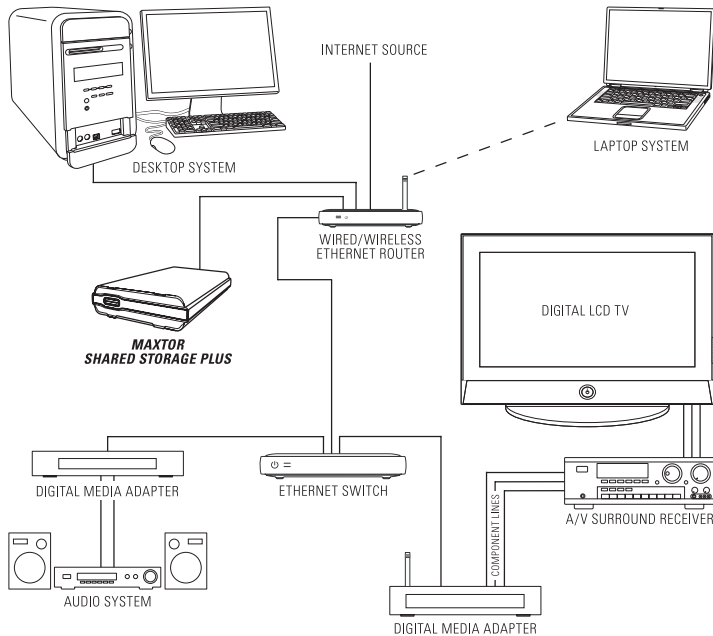
Figure 7. Resetting your drive



After you reset your Shared Storage Drive, its name will be reset to the original name when you installed it. (Example: MSS-000335). In addition, the workgroup will be reset to MSHOME.

Media Serving

With the Shared Storage Drive's Media Serving capabilities, you can view videos or photos and listen to music on your home entertainment center without ever turning on your computer. The Media Server feature is disabled by default on the Shared Storage Drive.



Once your Shared Storage Drive is properly connected to your network, you can copy music, movies, or videos directly to it. Next, connect an UPnP™ AV compatible digital media adapter (DMA) through your router, and your home network becomes a home entertainment center.

Considerations for home media networks

- Some data may not be available for access for up to two (2) hours after being copied to the Shared Storage Drive. To obtain immediate access to these media files, click on the Refresh button located in Web UI.
- Take a survey and note all of the wireless devices in your household (e.g., radio's, stereo's, speakers, phones, cell phones, microwave ovens, alarms, etc.).
- Use of a hand held WiFi detector will help determine strength and weakness of WiFi signals in your home.
- Be suspicious of any wireless devices in the same general area and remove them from the WiFi paths of your routers and media players.
- In some cases, firewalls may need to be disabled and re-enabled.
- Most wireless devices broadcast a wireless frequency by default. Check the documentation of your wireless media players for configuration (WEP) settings.
- Check that your wireless router (WEP) security settings will allow detection and connection of new devices.
- Try moving your media player within a couple of feet of your wireless router for configuration and connection.
- When configuring and detecting wireless devices, keep an Ethernet cable handy to hard wire the devices together for diagnosis.
- If you continue to have problems with your WiFi connection dropping off line, consider hardwiring the devices with Cat5e Ethernet cabling.
- If you're still having detection issues, reset all network devices by physically unplugging them from power. Power on all routers, switches, the Maxtor Shared Storage Plus, PC's, and finally media players.

Index

A

About this Guide 2

C

Connect your drive 3

Connecting the Ethernet cable 3

Connecting the power 3

D

Drag and Sort 1, 9

drive

 components 1

 handling precautions 2

F

FAT32 64

I

Installing your drive 3

L

Language 9

M

Maxtor Support 2

Media Serving 66

Minimum System Requirements 2

N

Network ID 1, 4

P

Power up your drive 3

Q

Quick Start CD 1, 6

R

Resetting your drive 65

S

Set up your drive 4

Shared Storage Drive home page 10

Shutting down your drive 65

SimpleView™ 21

U

UPnP 28

USB drives 64

USB printers 65

Using the Shared Storage 9



Copyright © 2005 Maxtor Corporation. All rights reserved. Changes are periodically made to the information herein which will be incorporated in revised editions of this publication. Maxtor may make changes or improvements to the product(s) described in this publication at any time and without notice. Maxtor is a registered trademark of Maxtor Corporation. All other brands or products are trademarks or registered trademarks of their respective holders. Maxtor Corporation, 500 McCarthy Blvd., Milpitas, California 95035 USA.