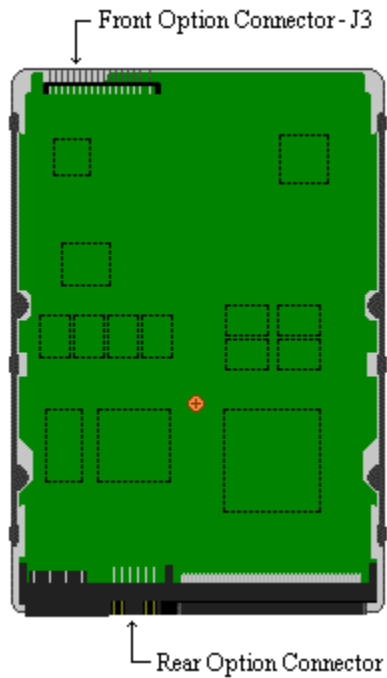


Atlas™ IV

68-Pin Jumper Settings



The following describes the jumper options and settings available on the Maxtor® Atlas™ IV disk drive. For more detail on jumper definitions; please refer to the jumper definition section.

The Atlas IV was developed by the Quantum Corporation prior to its merger with Maxtor.

Delay Spin (DS)

Enable Delay Spin	Jumper across pins 11-12
Disable Delay Spin	No jumper across pins 11-12

SCSI ID (A3, A2, A1, A0)

Set drive SCSI ID	See ID settings table below
-------------------	-----------------------------

Force SE (SE)

Force Single Ended Mode	Jumper across pins 13-14
LVD Operation	No jumper across pins 13-14

No Wide (NW)

Enable Narrow Mode	Jumper across pins 23-24
Enable Wide Mode	No jumper across pins 23-24

Stagger Spin

Enable stagger spin	Jumper across pins 21-22
Disable stagger spin	No jumper across pins 21-22

Termination Power

Enable Termination Power	Jumper across pins 27-28
Disable Termination Power	No jumper across pins 27-28

Write Protect

Enable Write Protection	Jumper across pins 19-20
Disable Write Protection	No jumper across pins 19-20

Termination Note

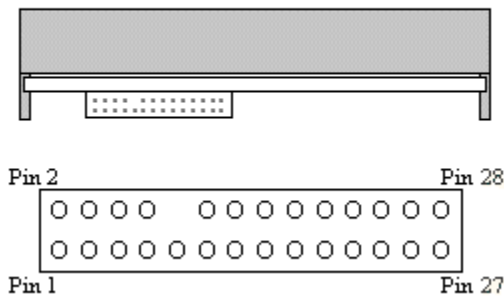
The Atlas IV wide disk drive is manufactured as an Ultra2 Multi-Mode LVD device only. This drive does not provide for onboard SCSI bus termination. Refer to your system or SCSI controller documentation regarding recommendations on SCSI bus termination.

Jumper Location

The Atlas IV wide LVD disk drive has two locations where user configurable jumpers are found. The primary jumper block (Front option connector J3) for the Atlas IV wide LVD drive is found on the front edge of the disk drive printed circuit board. Using these jumper pins you can establish the various drive configuration options. The secondary option jumper block (12-pin) provides an alternate method for setting primary drive features. The alternate jumper block is located at the rear of the drive and is incorporated into the SCSI cable connector.

Front Option Connector - J3

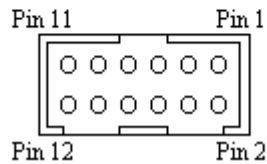
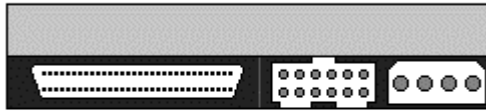
Front View



Pin	Signal	Pin	Signal
1	logic_gnd	2	SCSI ID (A3)
3	logic_gnd	4	SCSI ID (A2)
5	logic_gnd	6	SCSI ID (A1)
7	logic_gnd	8	SCSI ID (A0)
9	Fault LED	10	Blank (Key, no pin)
11	logic_gnd	12	Spin Delay (DS)
13	logic_gnd	14	Force SE (SE)
15	NC	16	NC
17	+5V out	18	Busy Out
19	logic_gnd	20	Write Protect (WP)
21	logic_gnd	22	Stagger Spin (SS)
23	logic_gnd	24	No Wide (NW)
25	logic_gnd	26	Reserved
27	Term Power (TP)	28	Term Power (TP)

Rear Option Connector

Back View



Pin	Signal	Pin	Signal
1	SCSI ID (A0)	2	XTFault
3	SCSI ID (A1)	4	logic_gnd
5	SCSI ID (A2)	6	logic_gnd
7	SCSI ID (A3)	8	Busy LED
9	NC	10	logic_gnd
11	LED Pwr (+5V)	12	NC

SCSI ID Settings

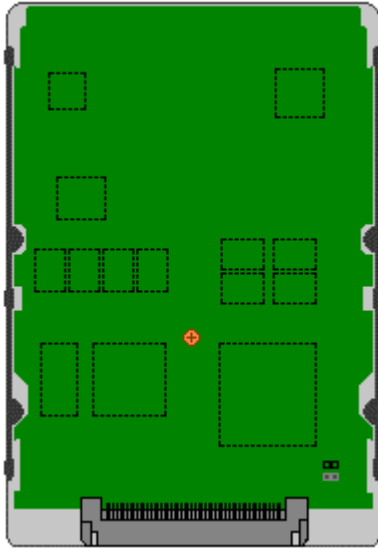
The following table identifies the various SCSI ID values and the jumper positions required to set them.

Drive ID	A0 (Pins 7-8)	A1 (Pins 5-6)	A2 (Pins 3-4)	A3 (Pins 1-2)
ID 0	OFF	OFF	OFF	OFF
ID 1	ON	OFF	OFF	OFF
ID 2	OFF	ON	OFF	OFF
ID 3	ON	ON	OFF	OFF
ID 4	OFF	OFF	ON	OFF
ID 5	ON	OFF	ON	OFF
ID 6	OFF	ON	ON	OFF
ID 7	ON	ON	ON	OFF
ID 8	OFF	OFF	OFF	ON
ID 9	ON	OFF	OFF	ON

ID 10	OFF	ON	OFF	ON
ID 11	ON	ON	OFF	ON
ID 12	OFF	OFF	ON	ON
ID 13	ON	OFF	ON	ON
ID 14	OFF	ON	ON	ON
ID 15	ON	ON	ON	ON

Atlas™ IV

80-Pin Jumper Settings



The following describes the jumper options and settings available on the Maxtor® Atlas™ IV SCA disk drive. For more detail on jumper definitions; please refer to the jumper definition section.

The Maxtor Atlas IV was developed by Quantum Corporation prior to its merger with Maxtor.

Force SE (SE)

Enable Single Ended operation	SE jumper on
Enable auto switch between Single Ended or LVD operation	SE jumper off*

* Indicates default jumper setting

The Atlas IV SCA drive does not provide support for any additional options through the use of physical jumper settings. Additional feature options are set through the SCA interface, contact your system manufacturer for details on how to set optional features.

The Atlas IV SCA provides support for:

Stagger Spin, Spin Delay and SCSI ID selection.

The Atlas IV SCA does not provide support for:

Active Termination enable, Termination Power and Write Protect.

Jumper Locations

The Atlas IV SCA disk drive has only one location (J7 on PCB) where user configurable jumpers are found. The jumper block for the Atlas IV SCA drive is found on the disk drive printed circuit board near the SCA cable connector.

SCSI ID Settings

The Atlas IV SCA drive does not provide for physical configuration of the SCSI ID. Maxtor, formerly Quantum, disk drives that utilize the 80-pin SCA connector do not require any jumper configuration for SCSI ID. Systems that use SCA connections, typically, auto-configure the SCA device. This configuration is determined by the system at start-up or by user definition during system setup. Contact your system manufacturer for details on setting SCSI ID.