



This easy-to-use Seagate external hard drive lets you quickly store and protect your valuable digital memories and safely back up important personal files.

### Package Contents

- External hard drive
- USB cable
- Power supply
- Quick Connect Guide
- One-year limited warranty



### System set up

**Note:** For best performance using the USB interface, Windows XP requires Service Pack 1 or higher, and Windows 2000 Pro requires Service Pack 4 or higher. For information about service packs for Windows, visit [www.microsoft.com](http://www.microsoft.com).

#### Windows Me/2000 Pro/XP

- Windows will automatically detect the device as a USB Mass Storage Device and install the necessary drivers.

#### Windows 98SE

**Note:** You must install the USB driver before connecting the external drive to your computer.

- Go to [www.seagate.com/support/drivers/](http://www.seagate.com/support/drivers/).
- Click "Download the drivers for Windows 98SE and USB connections."
- Click on "run" for the driver to be installed.
- Restart your computer.
- Follow instructions in this guide for Connecting the drive.

## Connecting the drive

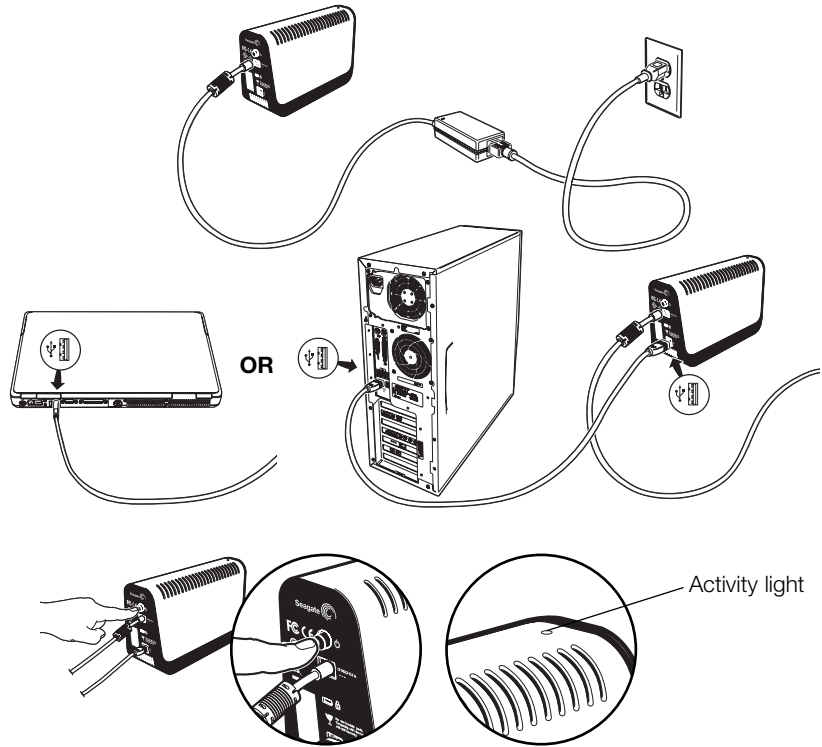
- 1 Connect one end of the power cord to the power supply socket on the back of the external drive and the other end to an electrical outlet.

- 2 Attach one end of the USB cable to the port on the back of the drive and the other end to an available USB port on the **back** of your desktop or notebook computer.

**Warning: Do not connect the USB cable to any USB ports on the front of your desktop computer or monitor, as it could cause the external hard drive to malfunction.**

- 3 Press the power button on the back of the external drive to turn it on. After the operating system assigns a letter to the drive, it is ready to use. (A letter will be assigned only the first time you start the drive.)

A green light on the top of the drive will illuminate to indicate drive activity.



## Disconnecting the drive

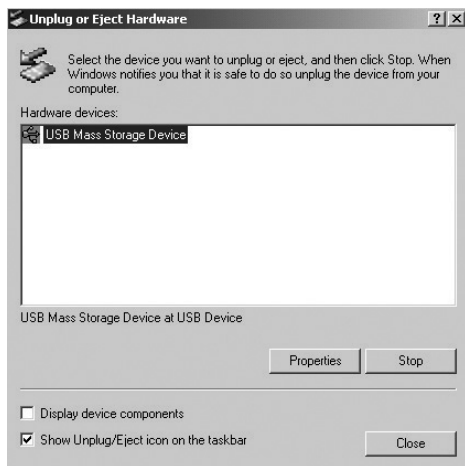
**Note: You must close all open windows on the Seagate External Hard Drive in order to disconnect it. To prevent data loss, close all computer applications prior to disconnecting or turning off the Seagate External Hard Drive.**

- 1 Double-click the Windows Unplug or Eject Hardware icon in the lower right corner of your monitor.



(Hint: You can also right-click on the icon and select USB Mass Storage Device from the pop-up dialog box.)

- 2 Highlight USB Mass Storage Device or the Seagate External Drive USB Device and click *Stop*.



- 3 Highlight the Seagate External Drive USB Device and click *OK*. You will receive a message that the USB Mass Storage Device can now be safely removed from the system.



- 4 Turn off the power to the hard drive and disconnect from the computer (if desired).