

The Samsung logo is displayed in white, bold, uppercase letters within a white oval shape, set against a dark brown background.

SAMSUNG

Samsung Wireless

User Guide

Mobile Media Streaming Device

All rights reserved. Seagate is the trademark or registered trademark of Seagate Technology LLC or one of its affiliated companies in the United States and/or other countries. Samsung and the Samsung logo are trademarks of Samsung Electronics Co., Ltd. All other trademarks or registered trademarks are the property of their respective owners. When referring to drive capacity, one gigabyte, or GB, equals one billion bytes and one terabyte, or TB, equals one thousand billion bytes. Your computer's operating system may use a different standard of measurement and report a lower capacity. In addition, some of the listed capacity is used for formatting and other functions and will not be available for data storage. Quantitative usage examples for various applications are for illustrative purposes. Actual quantities will vary based on various factors, including file size, file format, features, and application software. The export or re-export of hardware or software containing encryption may be regulated by the U.S. Department of Commerce, Bureau of Industry and Security (for more information, visit www.bis.doc.gov) and controlled for import and use outside of the U.S. Actual data rates may vary depending on operating environment and other factors. Seagate reserves the right to change, without notice, product offerings or specifications.

Seagate Technology LLC, 10200 S. De Anza Blvd, Cupertino, CA 95014 U.S.A.
Seagate Technology International, Koolhovenlaan 1, 1119 NB Schiphol-Rijk, The Netherlands

Regulatory Compliance

FCC Class B Information

IMPORTANT NOTE: FCC Compliance statement

This equipment has been tested and found to comply with the limits for a Class B digital device, pursuant to Part 15 of the FCC Rules. These limits are designed to provide reasonable protection against harmful interference in a residential installation. This equipment generates, uses and can radiate radio frequency energy and, if not installed and used in accordance with the instructions, may cause harmful interference to radio communications. However, there is no guarantee that interference will not occur in a particular installation. If this equipment does cause harmful interference to radio or television reception, which can be determined by turning the equipment off and on, the user is encouraged to try to correct the interference by one of the following measures:

- Reorient or relocate the receiving antenna.
- Increase the separation between the equipment and receiver.
- Connect the equipment into an outlet on a circuit different from that to which the receiver is connected.
- Consult the dealer or an experienced radio/TV technician for help.

IMPORTANT NOTE: FCC Operation Guide

This device complies with Part 15 of the FCC Rules. Operation is subject to the following two conditions: (1) This device may not cause harmful interference, and (2) this device must accept any interference received, including interference that may cause undesired operation.

IMPORTANT NOTE: FCC Caution Statement

Any changes or modifications not expressly approved by the party responsible for compliance could void the user's authority to operate this equipment.

IMPORTANT NOTE: FCC RF exposure statement

The antenna(s) used for this device must be installed to provide a separation distance of at least 20 cm from all persons and must not be co-located or operating in conjunction with any other antenna or transmitter.

This device is restricted to indoor use only within the 5.15-5.25 GHz band to reduce any potential for harmful interference to co-channel MSS operations.

IMPORTANT NOTE: FCC Shielded cable statement

This unit was tested with shielded cables on the peripheral devices. Shielded cables must be used with the unit to insure compliance.

Industry Canada

This device complies with RSS-210 of the Industry Canada Rules. Operation is subject to the following two conditions:

(1) This device may not cause harmful interference, and (2) this device must accept any interference received, including interference that may cause undesired operation.

Ce dispositif est conforme à la norme CNR-210 d'Industrie Canada applicable aux appareils radio exempts de licence. Son fonctionnement est sujet aux deux conditions suivantes: (1) le dispositif ne doit pas produire de brouillage préjudiciable, et (2) ce dispositif doit accepter tout brouillage reçu, y compris un brouillage susceptible de provoquer un fonctionnement indésirable.

IMPORTANT NOTE: (For mobile device use)

Radiation Exposure Statement : This equipment complies with IC radiation exposure limits set forth for an uncontrolled environment. This equipment should be installed and operated with minimum distance 20cm between the radiator & your body.

NOTE IMPORTANTE: (Pour l'utilisation de dispositifs mobiles)

Déclaration d'exposition aux radiations : Cet équipement est conforme aux limites d'exposition aux rayonnements IC établies pour un environnement non contrôlé. Cet équipement doit être installé et utilisé avec un minimum de 20 cm de distance entre la source de rayonnement et votre corps.

For Customers in Australia Only

Our goods come with guarantees that cannot be excluded under the Australian Consumer Law. You are entitled to a replacement or refund for a major failure and compensation for any other reasonably foreseeable loss or damage. You are also entitled to have the goods repaired or replaced if the goods fail to be of acceptable quality and failure does not amount to a major failure. Goods presented for repair may be replaced by refurbished goods of the same type rather than being repaired. Refurbished parts may be used to repair the goods. The repair of your goods will result in the loss of any user-generated data. Please ensure that you have made a copy of any data saved on your goods.

Battery Safety

This product contains a lithium-ion battery that must be disposed of properly.

Please follow the battery safety items below :

- Do not dismantle, open or shred secondary cells or batteries.
- Do not expose cells or batteries to heat or fire. Avoid storage in direct sunlight.
- Do not short-circuit a cell or a battery. Do not store cells or batteries haphazardly in a box or drawer where they may short-circuit each other or be short-circuited by, other metal objects.
- Do not use any charger other than that specifically provided for use with the equipment.
- Do not use any cell or battery which is not designed for use with the equipment.
- Do not mix cells of different manufacture, capacity, size or type within a device.
- Seek medical advice immediately if a cell or a battery has been swallowed.
- Do not subject cells or batteries to mechanical shock.
- In the event of a cell leaking, do not allow the liquid to come in contact with the skin or eyes. If contact has been made, wash the affected area with copious amounts of water and seek medical advice.
- Keep cells and batteries out of the reach of children.
- Keep cells and batteries clean and dry.
- Secondary cells and batteries need to be charged before use. Always use the correct charger and refer to the manufacturer's instructions or equipment manual for proper charging instructions.
- Do not leave a battery on prolonged charge when not in use.
- After extended periods of storage, it may be necessary to charge and discharge the cells or batteries several times to obtain maximum performance.
- Secondary cells and batteries give their best performance when they are operated at normal room temperature (20°C+5 °C).
- Retain the original product literature for future reference.
- Use only the cell or battery in the application for which it was intended.
- Dispose of properly.

The Samsung Wireless device is not intended for industrial use.

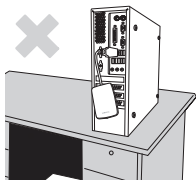
Handling Precautions

The following information serves to ensure user's safety and prevent damage to user's properties. Carefully read the information provided and use your product correctly.

USB BUS Power Adapter

Your Samsung Wireless must use the provided USB BUS Power Adapter for charging. Use of another power adapter may damage the device.

Installation Related



Use the product on a flat surface.

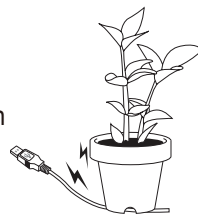


Do not sit on the product and do not place a heavy object over the product.
Product case or connector can be damaged and may cause a break down.

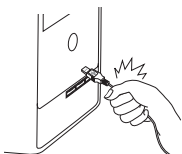
Data Cable Usage



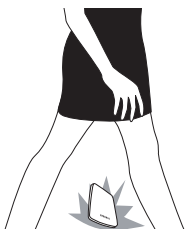
Standardized data cable
This may increase the wrong operation and may cause a malfunction.



Do not severely bend the data cable and do not place a heavy object over the data cable.
If the data cable is damaged, it may cause a malfunction.



Do not unplug the data cable by severely pulling the cable.
This may damage connector on the product and may cause a problem with product.



Shock

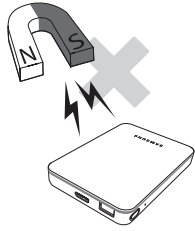
The Samsung Wireless is very portable and may be easily drop it. Take care not to drop and tip the product while carrying the external drive. If you make an impact on the external drive, it may cause bad sectors on the disk.

! Bad sectors can cause various and potentially read/write errors.



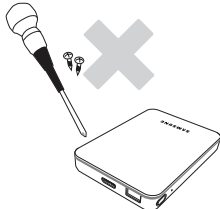
Humidity

If you use the product in places exposed to humidity, it may create the danger of electric shock. In addition, prolonged exposure to moisture can corrode various parts and components.



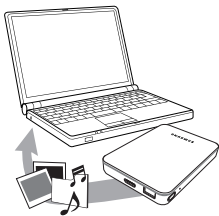
Magnets

Magnetic objects can cause various types of damage to the External Hard Drive, including data damage. Keep magnets and magnetic objects away from the external drive.



Disassembly and Label Removal

For repair, please visit the designated (Samsung) customer service center. Unauthorized disassembly, repair, or reform of the product and unauthorized removal of the labeling will void your warranty.



Always Backup your Important Data

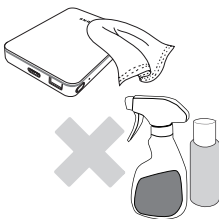
The external drive manufacturer does not guarantee data stored in the external drive and will not assume responsibility for any mental anguish or material damage incurred during data recovery.

- **Backup** : Store the original and a copy on two or more separate and accessible storage media.



Regular Virus Scanning

Frequently scan the device for viruses and protect the external drive from virus infection.

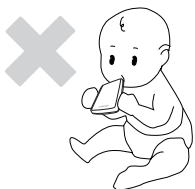


Cleaning the product

Never use cleaning fluid or similar chemicals.

Do not spray cleaner directly on the product.

It may cause discoloration and deformation of the product.



Custody Related

Keep the product and accessories out of the reach of children. It may cause personal injuries and problems.

Safely Remove Hardware

Always use the Safely Remove Hardware feature before shutting down the External Hard Drive or disconnecting the USB cable and power cable.

1MB=1,000,000bytes / 1GB=1,000,000,000bytes / 1TB=1,000,000,000,000bytes

Actual accessible capacity may vary from advertised capacity due to formatting and partitioning of the hard drive, as well as due to your computer's operating system.

Contents

1. Introduction

- 1 About this Guide
- 1 Samsung Wireless Features
- 2 Product Specifications
 - Supported Devices
 - Supported Web Browsers
 - Supported File Types
 - Hardware Specifications
- 3 Samsung Wireless Wi-Fi Security

2. Setting up the Samsung Wireless

- 4 Unpacking Your Box
 - Step 1: Connecting Your Samsung Wireless to Your Computer
 - Step 2: Setting up Your Samsung Wireless and Loading Content
 - Step 3: Disconnecting and Powering On
 - Step 4: Connecting to Your Samsung Wireless
- 7 Connecting to Your Samsung Wireless from an Android or iOS Device
- 9 Connecting to the Samsung Wireless from a Smart Device
- 10 Connecting to the Samsung Wireless from a Browser on a Computer
- 11 Setting the Samsung Wireless Sleep Mode

3. Enjoying Your Videos, Photos, and Music

- 13 Understanding the Android Application User Interface
- 15 Understanding the Android tablet app User Interface
- 15 Understanding the iOS Application User Interface
- 18 Understanding the Web Browser User Interface
- 19 Viewing and Playing Your Media
- 19 Searching for Files
- 20 Playing Videos
- 22 Viewing Photos
- 26 Playing Music
- 30 Adding Bookmarks
- 32 Viewing Content in Folders
- 32 Downloading Content to Your Smart Device or Computer
- 33 Wirelessly Uploading Content from Your Smart Device or Computer to Your Samsung Wireless

4. Enjoy your Samsung Wireless in your home network

- 35 Connecting to the Internet While Connected to the Samsung Wireless
- 37 Enjoy your Samsung Wireless with your TV

5. Managing Your Samsung Wireless

- 40 Upgrade Your Samsung Wireless Firmware
- 41 Restarting Your Samsung Wireless
- 41 Shutting Down the Samsung Wireless
- 42 Restoring Your Samsung Wireless to its Original Settings
- 42 Changing the Name of Your Samsung Wireless
- 42 Change the Password of Your Samsung Wireless Network
- 43 Disconnecting From the Samsung Wireless Network
- 43 Changing the Language of Your Samsung Wireless App
- 43 Deleting Content from Your Samsung Wireless
- 43 Disconnecting Your Samsung Wireless from Your Computer

6. An Overview of Your Samsung Wireless

- 45 Understanding the Samsung Wireless Components
- 46 Charging the Battery

7. Troubleshooting

- 47 Common Problems and Solutions

1. Introduction

'Samsung Wireless' is a portable wireless hard drive that broadcasts a wireless signal. You can store your digital media on the device and then stream content to Android and iOS devices or other Wi-Fi enabled smart devices or computers. See "Product Specifications" for a list of compatible devices and web browsers.

About This Guide

This guide introduces the features of the Samsung Wireless, describes how to set up your Samsung Wireless, how to fill up your Samsung Wireless with your digital media, and how to use your Samsung Wireless to enjoy your videos, photos, and music.

Samsung Wireless Features

Here's a list of some of the things you can do with your Samsung Wireless :

- **Store your movies, songs, and photos.** You can store regular or HD movies, songs, or photos. ¹
- **Load your media quickly.** Your Samsung Wireless comes with a USB 3.0 port (compatible with USB 2.0) for fast transfers. Just plug your Samsung Wireless into your computer (Windows PC or Mac) and copy and paste files.
- **Share content with more people.** Your Samsung Wireless serves as a mobile wireless network. All you need to do is select your Samsung Wireless as your wireless network from the device you want to use (your Android, iOS devices, computer, etc.) and then access your media. Your Samsung Wireless can stream seamlessly up to five Wi-Fi enabled devices at the same time.
- **Enjoy up to seven hours of usage.** Your Samsung Wireless (when fully charged) provides up to 7 hours of enjoyment. ²



Note : If you are viewing High-Definition video, you may experience shorter battery life.

- **Do more.** While you are listening to music or viewing movies or photos on your Android and iOS devices, you can also browse the Internet, from your home network or your favorite Wi-Fi hotspot.



Note : We do not recommend streaming HD video from the Internet to other devices at the same time while the Samsung Wireless is connected to your Wi-Fi zone.

- **Manage your digital media files.** The Samsung Wireless app, which is developed specifically for Android and iOS devices, helps you enjoy your music, photos, and videos with features such as playing music in the background while using other apps, adding movie bookmarks, and personalizing photo slideshows. For more information, see "Enjoying Your Videos, Photos, and Music" on page 14.

1. Quantitative usage examples for various applications are for illustrative purposes. Actual quantities will be based on various factors, including file size, file format, features, and application software.

2. Exact battery life subject to product model, normal usage condition and configurations.

Product Specification

The following lists identify the devices, browsers, file types, and hardware specifications for your Samsung Wireless.

Supported Devices

Your Samsung Wireless can be used with these devices :

- Android based tablets and smart phones via App (Android 2.3 or higher, Kindle Fire generation 2 or higher)
- iPhone or iPad, iPad mini via App (iOS 7 or higher)
- Other Wi-Fi enabled smart devices via Web Browser
- Windows computer running Windows 8, Windows 7, Windows Vista
- Mac computer running Mac OS X 10.6 or later operating system

Supported Web Browsers

You can use these browsers to access your media library on your Samsung Wireless :

- WebKit – Android
- Internet Explorer 9 or later (Windows)
- Safari 5 or later (Mac OS)
- Google Chrome
- Firefox
- Kindle Fire Silk

Supported File Types

For Android devices

- Video : H.264 video, MPEG-4, Motion-JPEG
- Audio : AAC, MP3, M4a, Audible(formats 2, 3, 4), Apple Lossless, AIFF, WAV
- Documents : Microsoft Office, Adobe Acrobat (PDF)

For iOS devices

- Video: H.264 video, MPEG-4, .m4v, .mp4, .mov
- Audio: AAC, MP3, M4a, Audible(formats 2, 3, 4), Apple Lossless, AIFF, WAV

For laptop, tablet and other smart devices

- Any files supported by your device`s applications

Hardware Specifications

- Drive Capacity : 1.5TB
- SuperSpeed USB 3.0 port (required for USB 3.0 transfer speeds) or USB 2.0 port
- Battery : Non-user replaceable lithium-ion battery
- Battery Life : Up to 7 hours of enjoyment (1 user)
- Maximum Wi-Fi range : 45 meters /147 feet (802.11 b/g/n 2.4GHz)
- Drive Format : NTFS

The Paragon NTFS driver is available to enable read/write access using the Mac operating system.
The software is available on your Samsung Wireless device.

Samsung Wireless Wi-Fi Security

Since your Samsung Wireless is a wireless broadcasting device, it can be “seen” by any Wi-Fi device within its range (up to 45 meters/147 feet).

Samsung Wireless has a network password from factory to restrict access. The initial password is 10 times “0” (0000000000) If you want to change your Samsung Wireless network password, see “Change a Password of Your Samsung Wireless Network” on page 38.

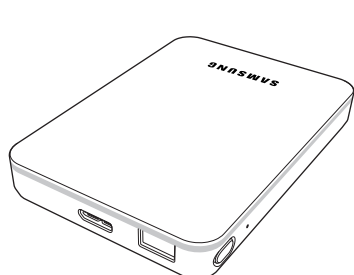
Remark : When your Samsung Wireless is physically connected to your computer with the USB cable, wireless is disabled.

2. Setting up the Samsung Wireless

This chapter explains each step of the installation process in more detail than what is shown in the Quick Start Guide.

Unpacking Your Box

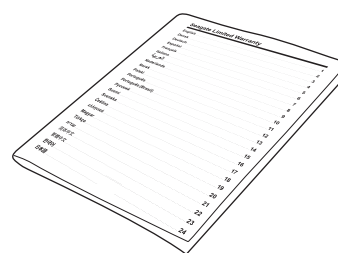
Before you begin to set up your device, unpack the box and ensure you have all of these items before continuing :
For a detailed description of these components, review “An Overview of Your Samsung Wireless” on page 41.



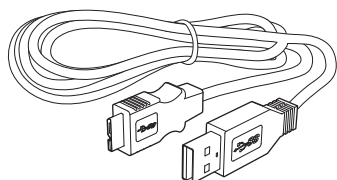
Samsung Wireless



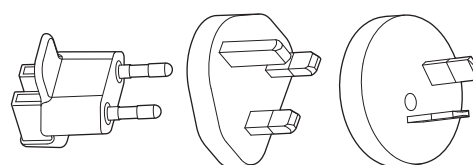
Quick Start Guide



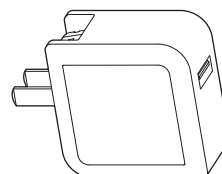
Warranty Booklet



USB 3.0 Micro-B Cable



and



Power Adapter Kit

Step 1: Connecting Your Samsung Wireless to Your Computer

The Samsung Wireless comes with a USB 3.0 cable. This USB 3.0 system provides faster transfer speeds when connected to a USB 3.0 port on your computer.



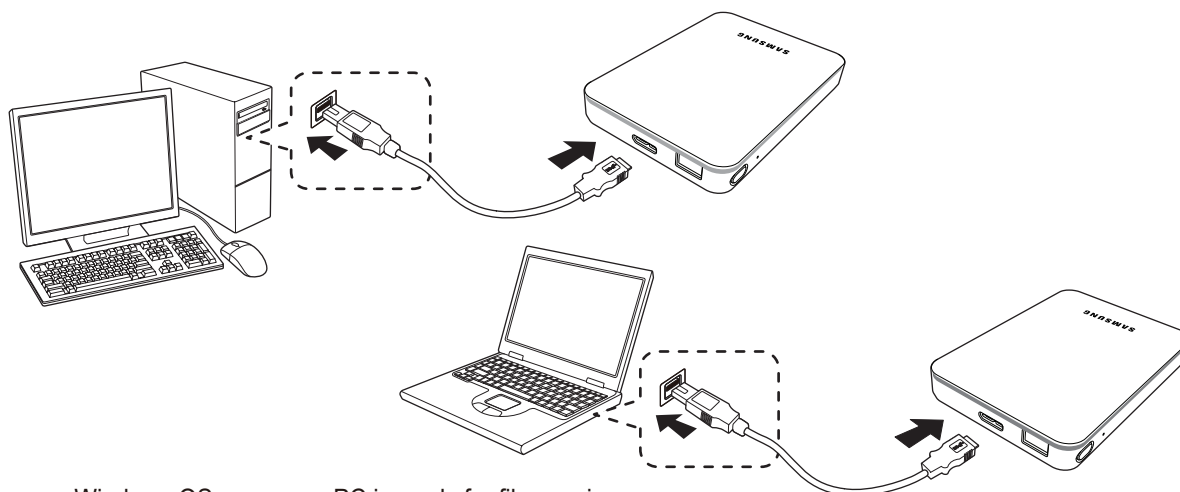
Note : If your computer does not have a USB 3.0 port, you can connect the cable to a USB 2.0 port but file transfer speed would be slower.

Connect the USB 3.0 cable to the Samsung Wireless, then connect to a USB port (2.0 or 3.0) on your computer.

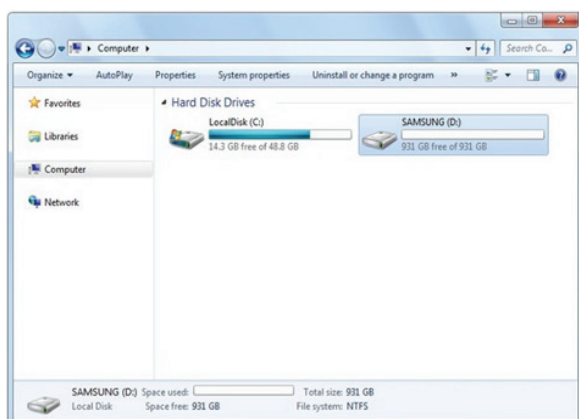
Step 2: Setting up Your Samsung Wireless and Loading Content

Set up Your Device

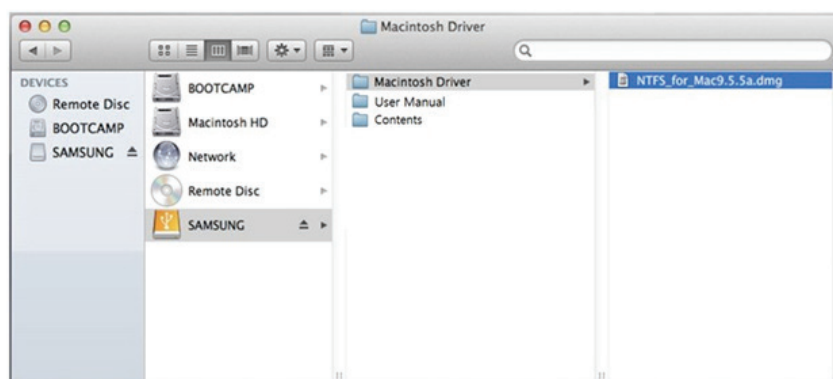
As shown in the figure below, connect the USB cable to your desktop PC or laptop.



If you are a Windows OS user, your PC is ready for file copying.



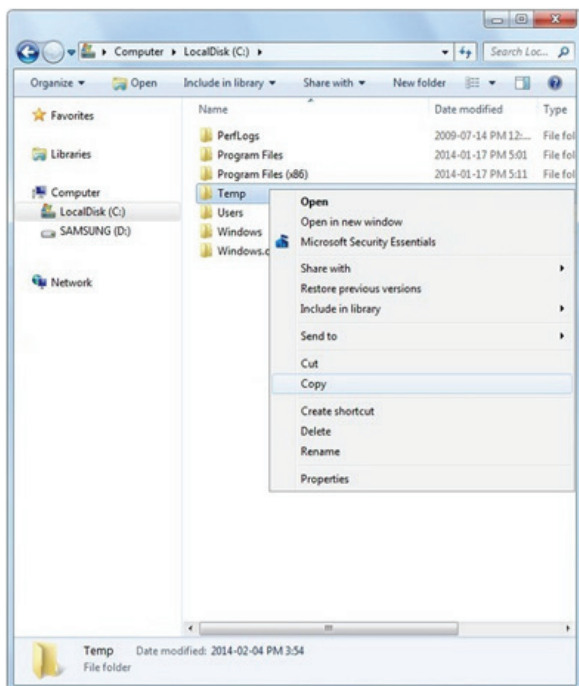
If you are Mac user, please install the NTFS for Mac driver (located on your Samsung Wireless) to allow file copying.
(If you only want to read the content on your Samsung Wireless, you do not need to install the driver)



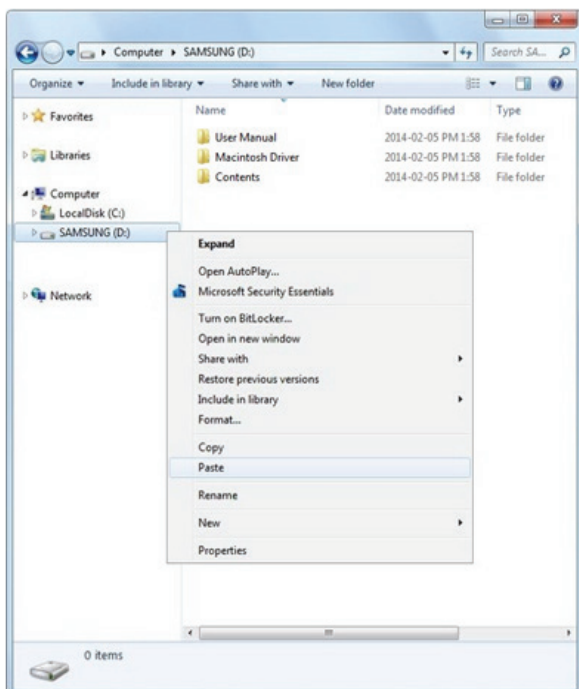
Loading Content

Once your computer is physically connected to your Samsung Wireless, the easiest way to fill up your Samsung Wireless is to Copy and Paste files from your computer to your Samsung Wireless.

When you Right-Click on a file or folder, you get another menu. Select 'Copy' in the menu.



Using a Right Click again, you can paste the file or folder onto the Samsung Wireless.



Note : It is the user's responsibility to comply with applicable copyright laws and to respect owner's rights in content usage.

Step 3: Disconnecting and Powering On

After you load your contents, disconnect your Samsung Wireless from the computer. To avoid losing data or damaging your files, please review “Disconnecting Your Samsung Wireless from Your Computer” on page 39.

Power on your Samsung Wireless by pressing the power button. The status light blinks as your Samsung Wireless starts up. When the status light turns to blinking blue, you can connect your smart device (phone, tablet) or computer to the Samsung Wireless device.

For more information about all of the components (Status lights, cables, etc.) of your Samsung Wireless, review “An Overview of Your Samsung Wireless” on page 41.



Tip : Your Samsung Wireless is pre-charged from the factory. However, you may want to charge your device before you allow other devices to connect to it and enjoy your videos, photos, and music. For more information on charging, see “Charging the Battery” on page 42.

Step 4: Connecting to Your Samsung Wireless

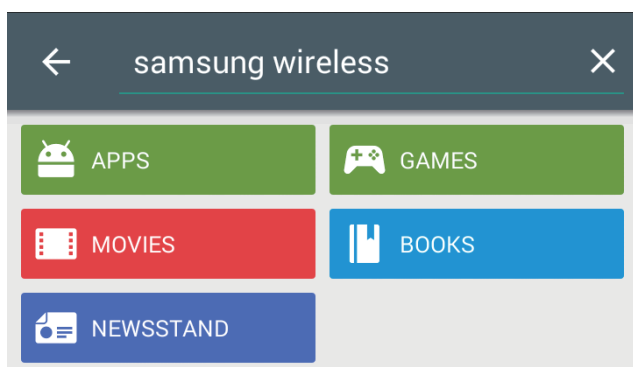
Now your Samsung Wireless has its own wireless network. When you connect to it, it establishes a dedicated link with the Samsung Wireless over Wi-Fi.

Connecting to Your Samsung Wireless from an Android or iOS Device

Android and iOS devices can use the Samsung Wireless app to help you search for and play media files in your Samsung Wireless. We recommend that you install this app before you connect to the Samsung Wireless network.

Installing the Samsung Wireless app to your Android device

1. Go to the Play Store.
2. Search for “Samsung Wireless”.



3. After installation, you can find the Samsung Wireless app on your Android device.



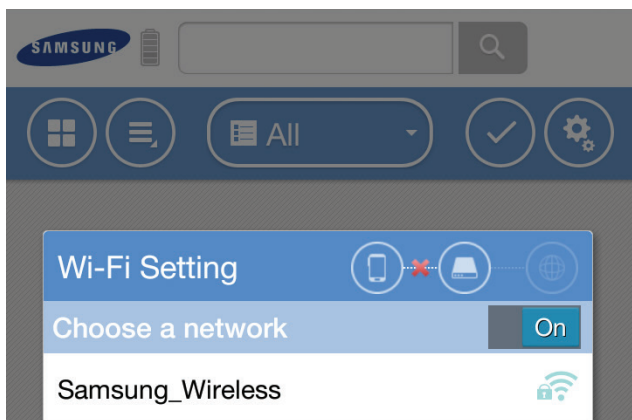
Installing the Samsung Wireless app to your iOS device

1. Go to the App Store
2. Search for “Samsung Wireless” and install on your iOS device
3. After installation, you can find the Samsung Wireless app on your iOS device.



Connecting to Your Samsung Wireless from your Android device

Once you open the ‘Samsung Wireless app’ it will ask you to select a Samsung Wireless Network from the available networks.



Initial password is set to 10 times “0” (0000000000).



Tip : If your Android device’s Wi-Fi is turned off, you can turn it on in the ‘Samsung Wireless app’.

In addition, you can connect to your Samsung Wireless network before you open the Samsung Wireless app. In this case, the Samsung Wireless app will not ask you to select the Samsung Wireless Network.

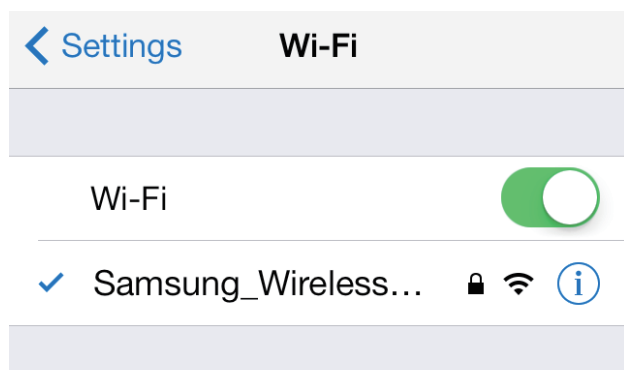
1. Go to the “Settings” on your Android device.
2. Turn on Wi-Fi.
3. Select Samsung Wireless Network from available networks.



4. Initial password is set to 10 times “0” (0000000000).
5. Open the ‘Samsung Wireless’ app.

Connecting to Your Samsung Wireless from your iOS device

1. Go to the “Settings” on your iOS device.
2. Turn on Wi-Fi.
3. Select Samsung Wireless Network from available networks.



4. Initial password is set to 10 times “0” (0000000000).
5. Open the ‘Samsung Wireless’ app

Connecting to the Samsung Wireless from a Smart Device

You can connect to the Samsung Wireless Network from WiFi enabled smart devices that have a web browser.

While connecting to a wireless network is similar on most smart devices, see the documentation that came with your device for detailed instructions.

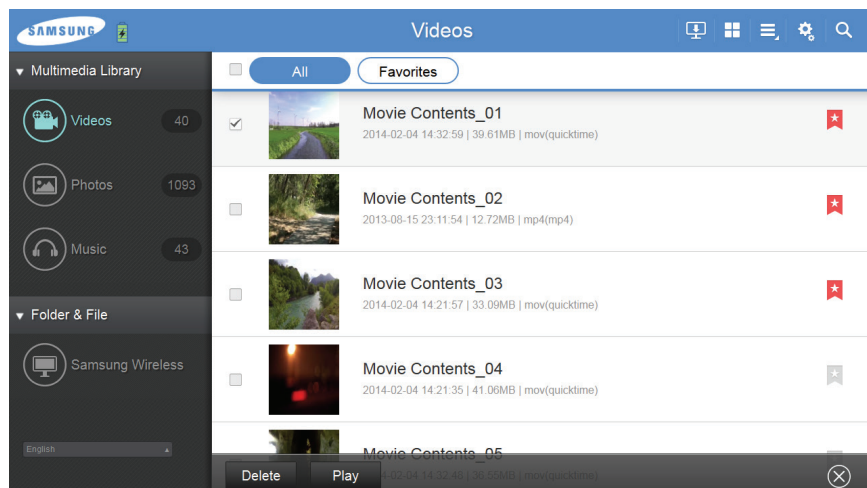
1. Go to your Smart Device’s Wi-Fi settings.
2. Select Samsung Wireless Network from the list of wireless networks.
3. Launch your smart device’s web browser.
4. Type on URL bar 172.25.0.1 and you will see the Samsung Wireless main page.

Connecting to the Samsung Wireless from a Browser on a Computer

You can stream your content from your Samsung Wireless with a web browser.

1. Enable the wireless connection on the computer.
2. Select “Samsung Wireless” from the list of available wireless networks.

Launch a web browser, and type on the URL bar 172.25.0.1 then you will see the Samsung Wireless main page.

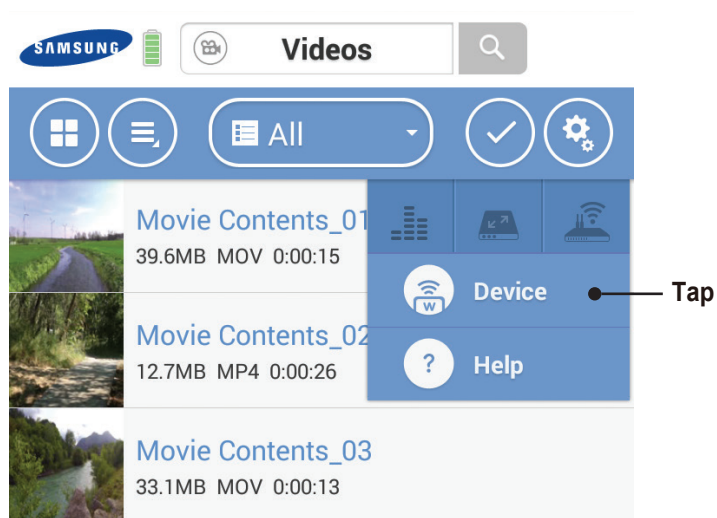


Setting the Samsung Wireless Sleep Mode

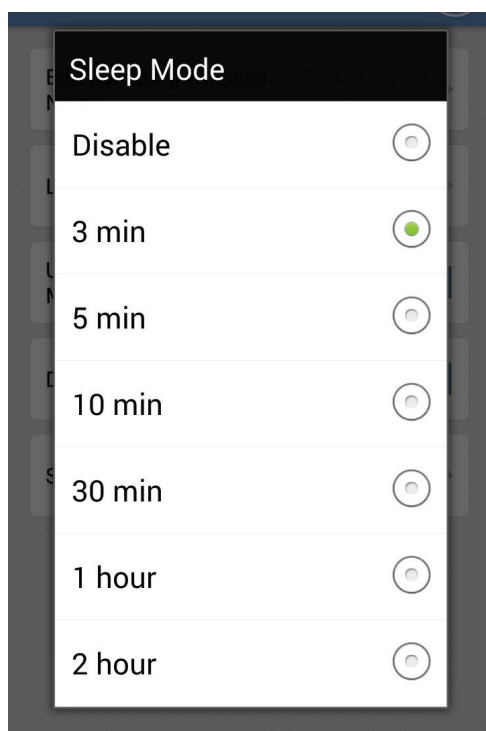
Follow these steps to set up the sleep mode on your Samsung Wireless to allow for more efficient battery usage.

Android

1. Click/Tap the 'Setup' button and select "Device" and then Settings.

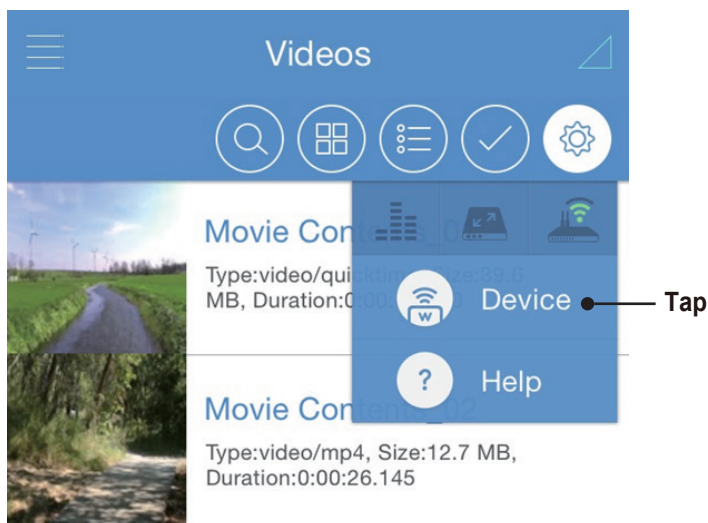


2. Select the "Sleep mode" setting and choose the time which works best for you. To maximize your battery life, choose 3 minutes. If you choose to "Disable" the sleep mode, your Samsung Wireless will never go into a power saving sleep mode.

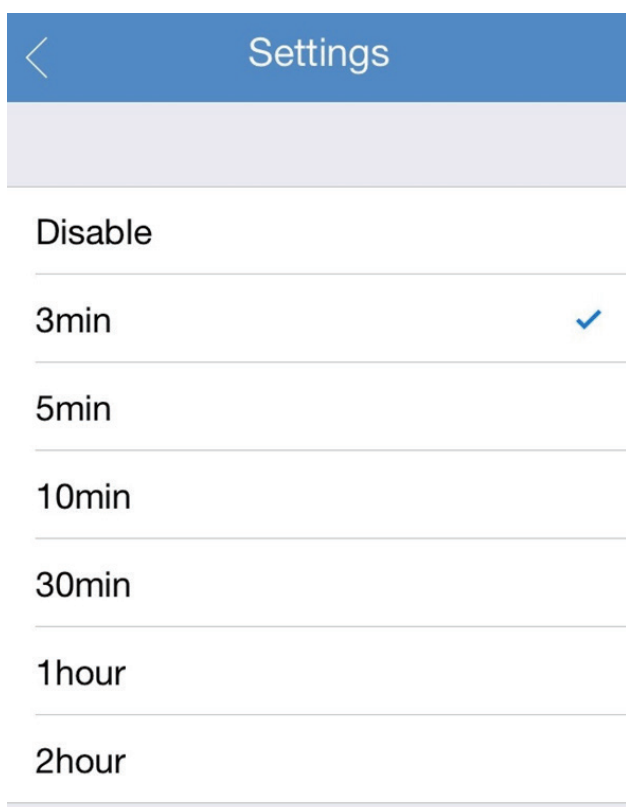


iOS

1. Click/Tap the 'Setup' button and select "Device" and then Settings



2. Select the "Sleep mode" setting and choose the time which works best for you. To maximize your battery life, choose 3 minutes. If you choose to "Disable" the sleep mode, your Samsung Wireless will never go into a power saving sleep mode.

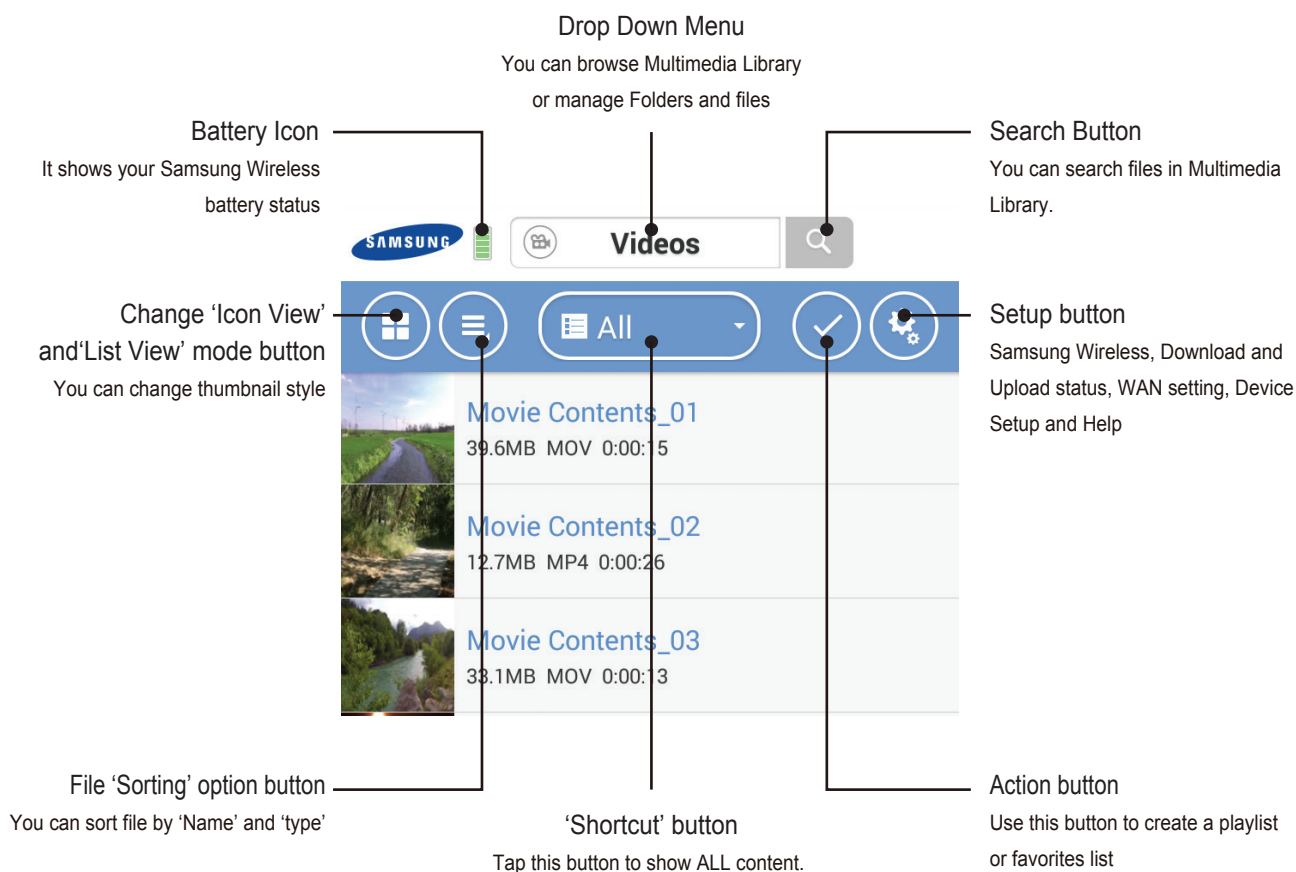


Note : Setting sleep mode settings in iOS is the same as setting sleep mode settings in Andorid

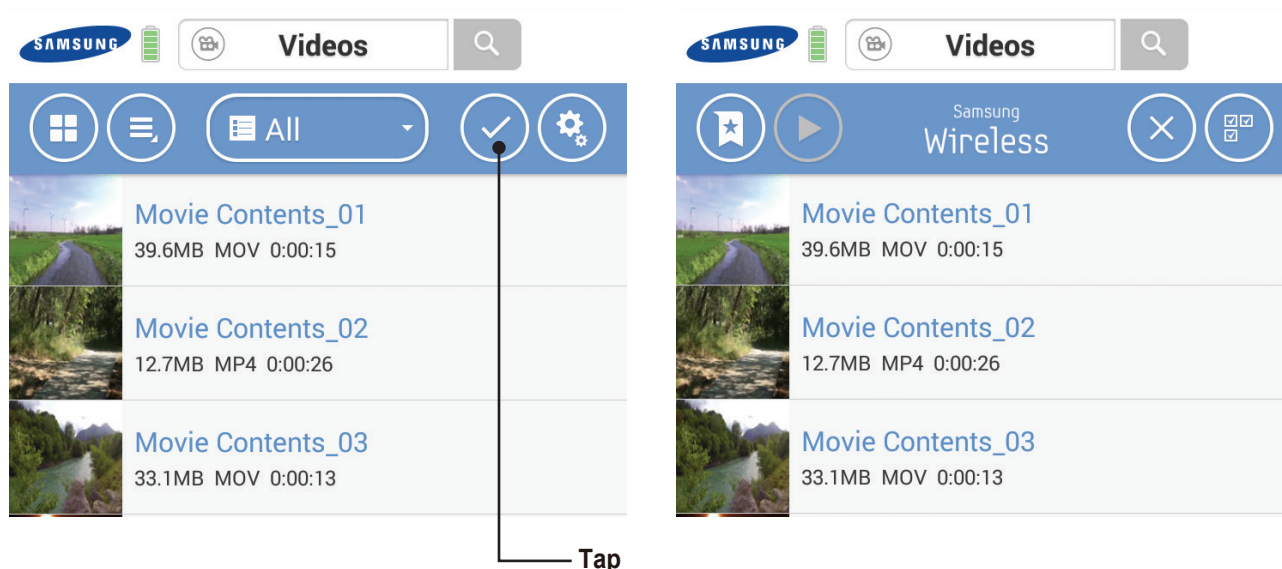
3. Enjoying Your Videos, Photos, and Music

There is a Samsung Wireless Android and iOS app that can help you enjoy and manage your digital media library. This application categorizes the digital media files which you copy to your Samsung Wireless.

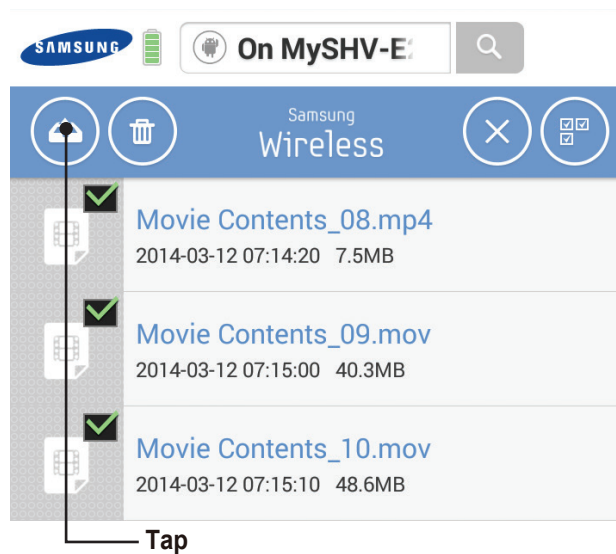
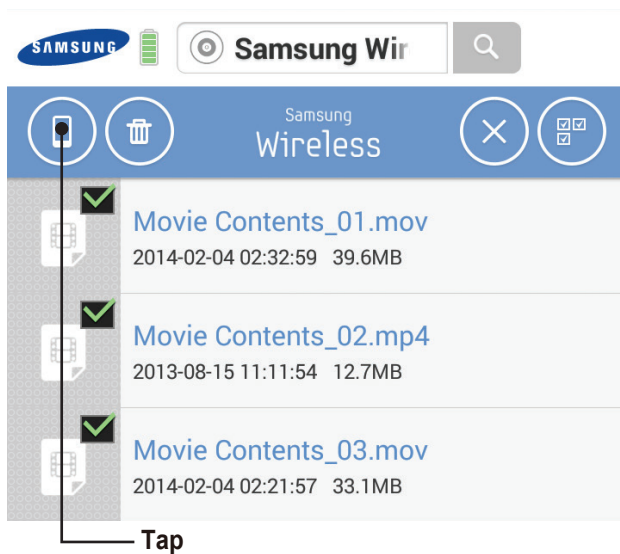
Understanding the Android Application User Interface




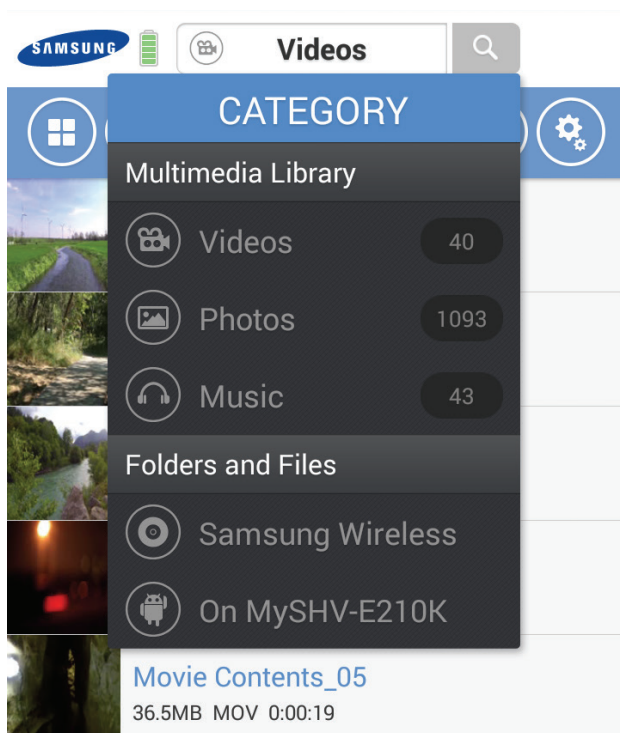
When you press an 'Action' button, you will see other menus like 'Bookmark' and 'Multi Files Play'.



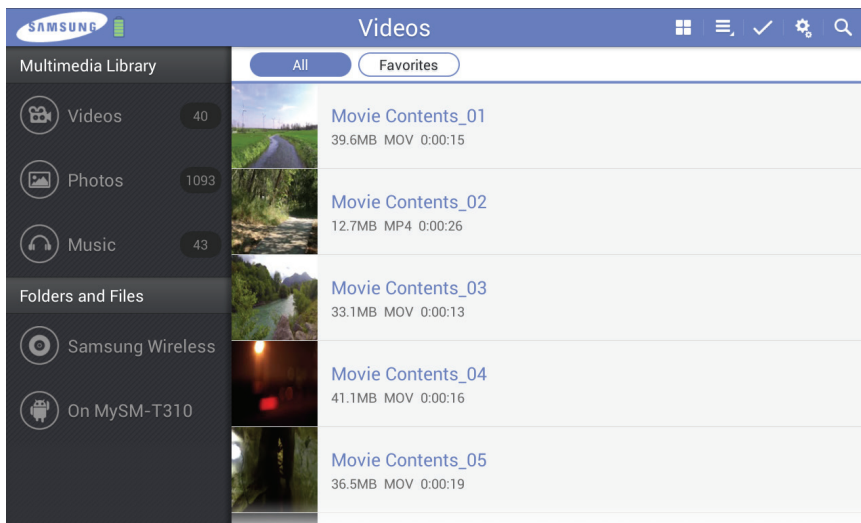
Using folders and files in the drop down menu, you can download content from your Samsung Wireless to your Android device or upload content from your Android device to the Samsung Wireless.



 **Tip :** The number of media files in each library is shown.



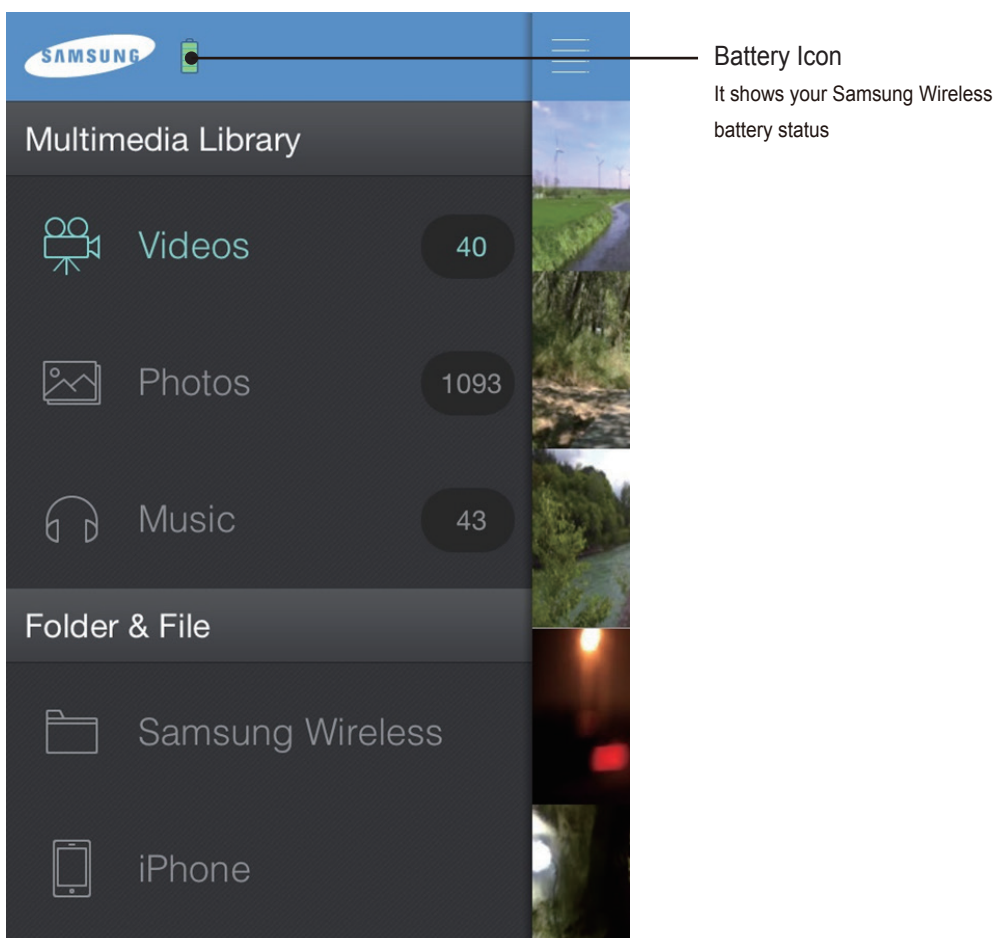
Understanding the Android Tablet App User Interface

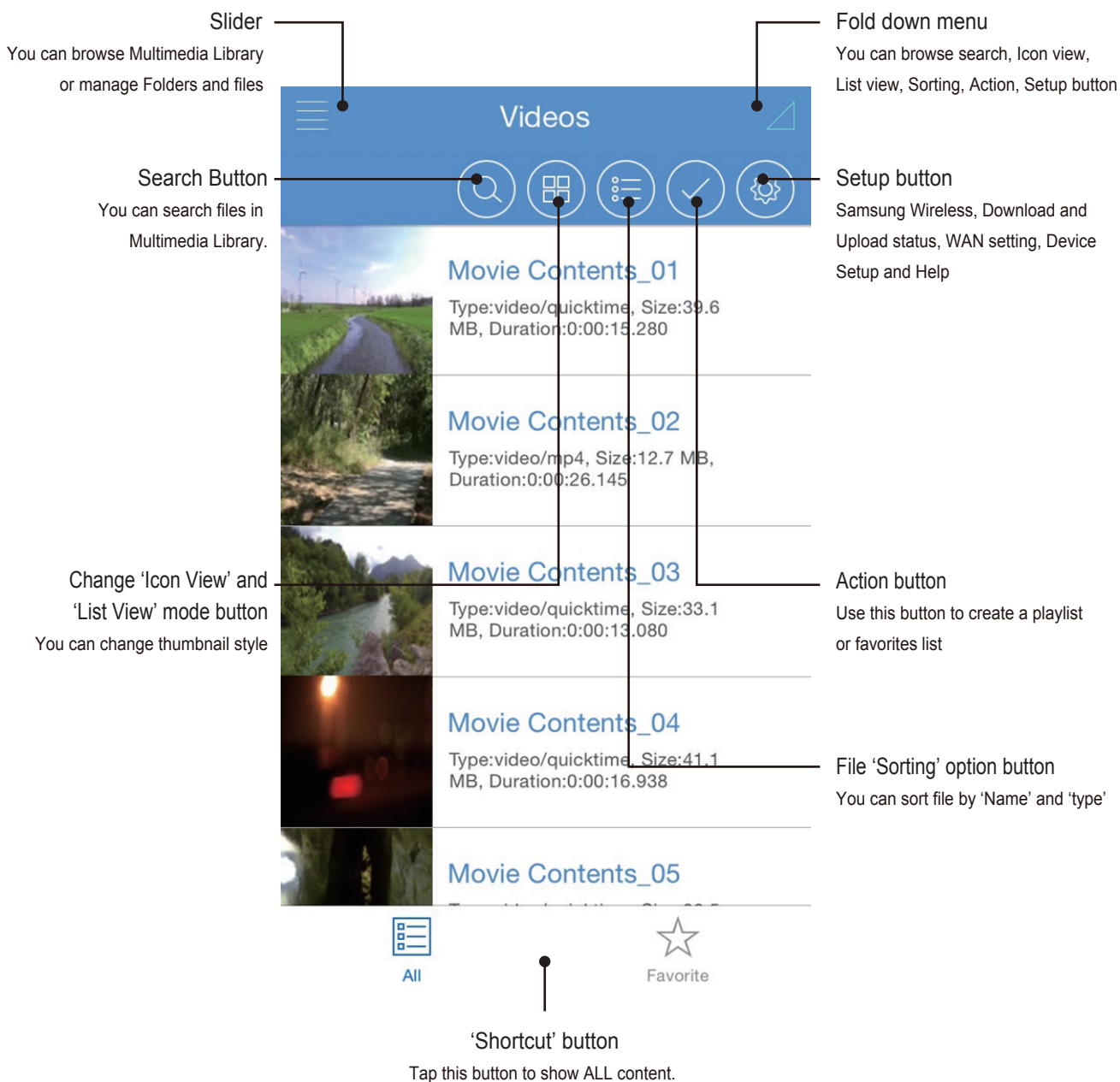


On the left side, you will see the Multimedia Library and Folder & Files menu.

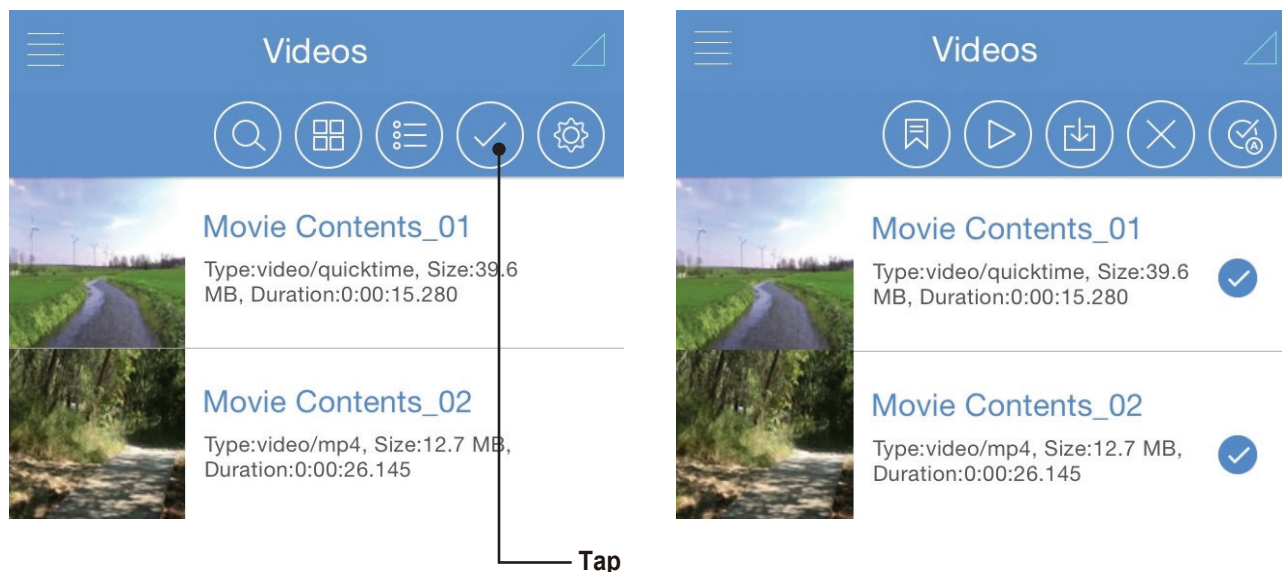
On the upper side, you will see the menu buttons and folder shortcuts.

Understanding the iOS Application User Interface



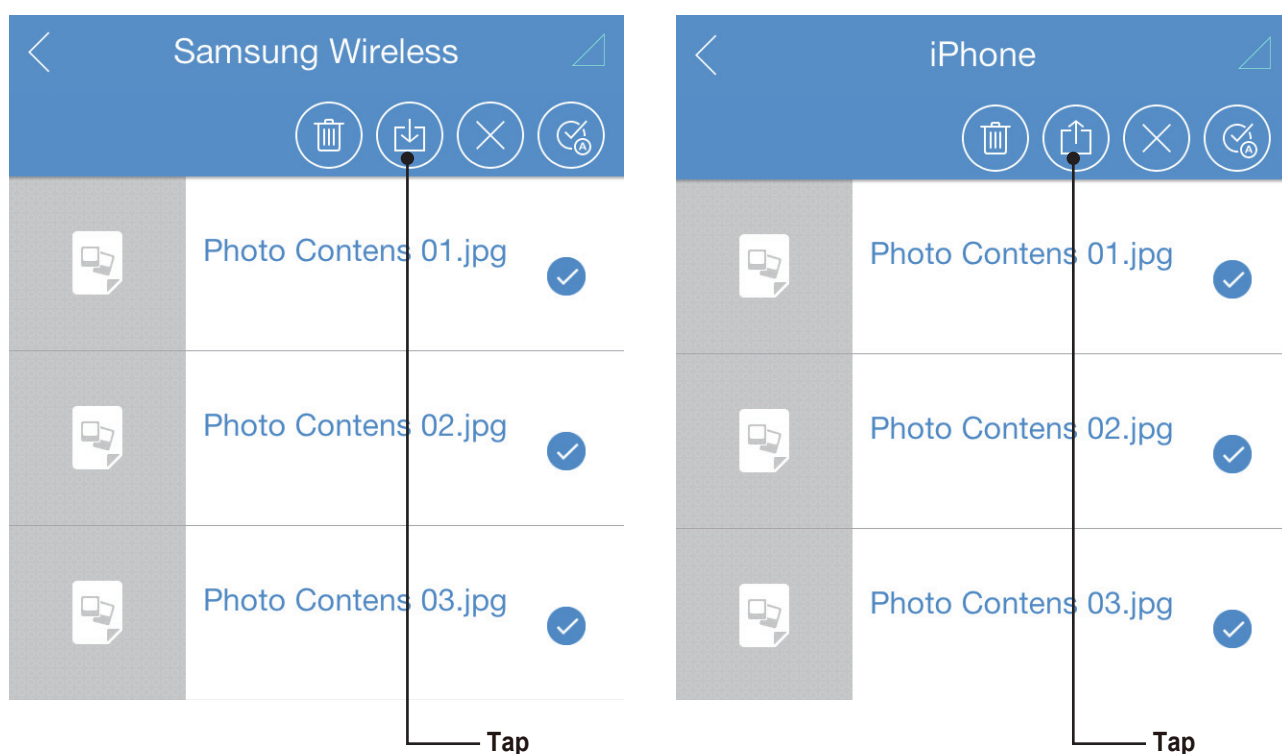


When you press an 'Action' button, you will see other menus like 'Bookmark' and 'Multi Files Play'



Using folders and files in the slider, you can download content from your Samsung Wireless to your iOS devices or upload content from your iOS device to the Samsung Wireless.

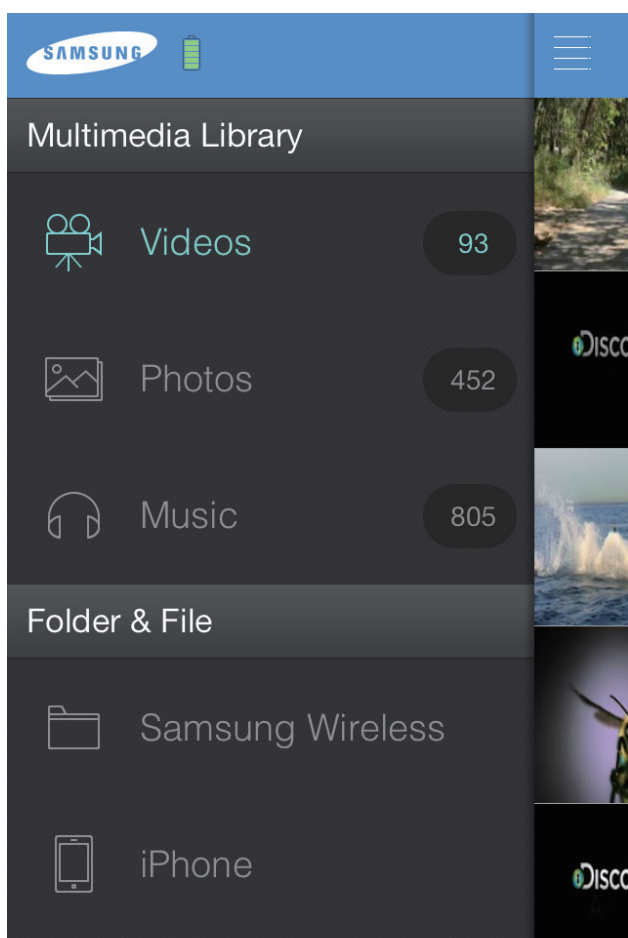
You can upload only from your gallery in the Samsung Wireless App.



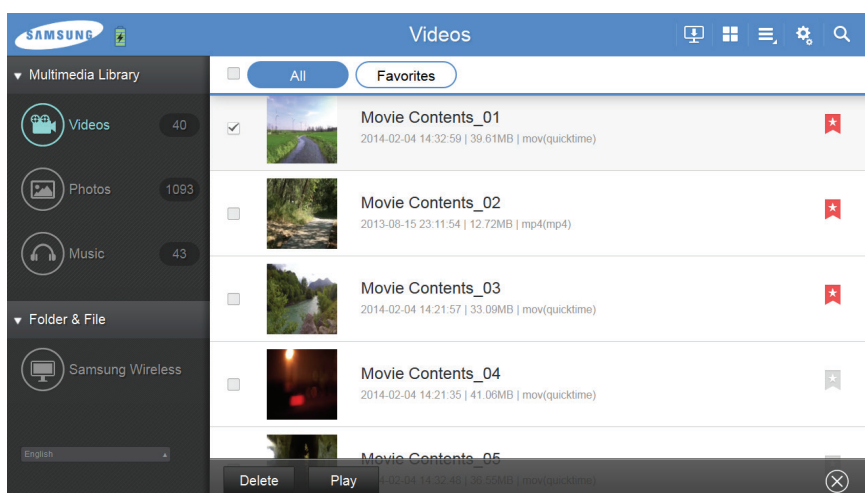
Note : You cannot upload content from other iOS apps on your device. For example, your photo library cannot be accessed by Samsung Wireless so those pictures must be transferred using a computer.



Tip : The number of media files in each library is shown.



Understanding the Web Browser User Interface



On the left side, you will see the Multimedia Library and Folder & Files menu.

On the upper side, you will see the menu buttons and folder shortcuts.

On the bottom side, you will see the execution buttons.

Viewing and Playing Your Media

This section provides instructions for playing videos, listening to music, and viewing photos and documents using the Samsung Wireless app or from a Web browser.

The Samsung Wireless app provides access to your media both on the Samsung Wireless and on your mobile device. For example, you can play videos and music stored on your smartphone or tablet directly from the app.


Note : Some features are accessed and perform differently in a Web browser. Sections that describe browser-specific functionality are clearly marked.

Searching for Files

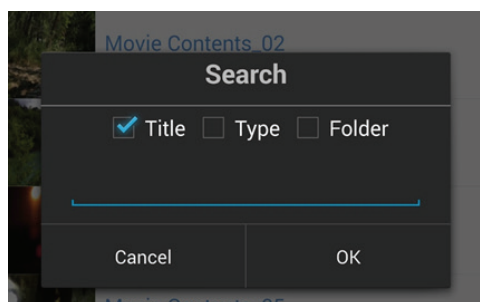
If you have a lot of files stored on your Samsung Wireless, you can use the search tool.

1. Click/Tap the search icon at the top of the screen.
2. In the Search box, enter all or part of the file name and Click/Tap the Search button.

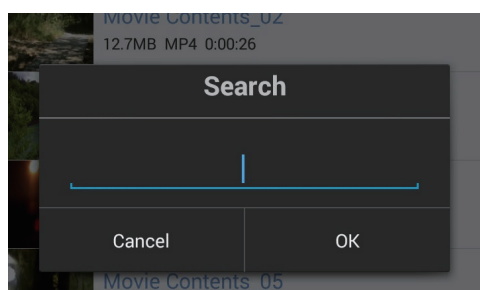
Android App

Tap the  button which is next to the drop down menu.

Once the "Search" window has opened, you can choose to search all the contents of your Samsung Wireless either by Title, Type, or Folder. Enter the text in the search field and then tap the "OK" button.




Once the results of your initial search are provided, you can then perform a second level search of your results to further refine your search.



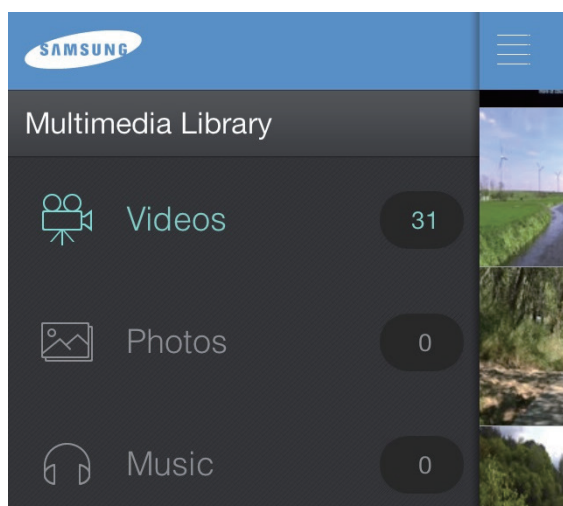
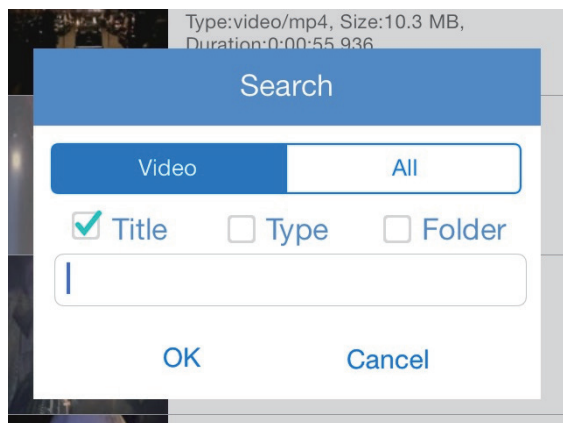
You can move back to a previous screen by tapping the "Cancel" button in the app or the "Back" button on your Android device.

Note : Further search is available when you searching contents in contents folder

iOS App

Tap the  button which is in the fold down menu

Once the "Search" window has been activated, you can choose search type in All or contents folder and then type in a keyword to the search bar.



Note : There is no second level search capability in the iOS app like there is in the Android app.

Playing Videos

Follow these steps to play videos that you have copied to your Samsung Wireless.










1. Open the Samsung Wireless App or access the Samsung Wireless main page from your Web browser
2. Select "Videos" to display video contents on the Samsung Wireless.
3. Click/Tap the video that you want to play.

Android App

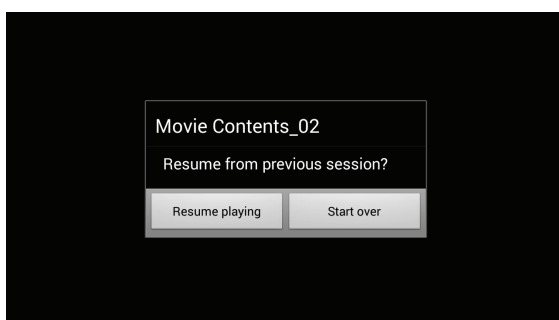
Select the Video icon  in the drop down menu.



This is the Samsung Wireless Video Player's User Interface. While the video is playing, you can tap the screen and then the menu will display.

1. File Name
2.  Repeat Setting
3.  ,  Screen Size Setting
4.  Previous File
5.  Next File
6.  Rew 5sec
7.  Fast Forward 15sec
8.  Pause
9.  Play

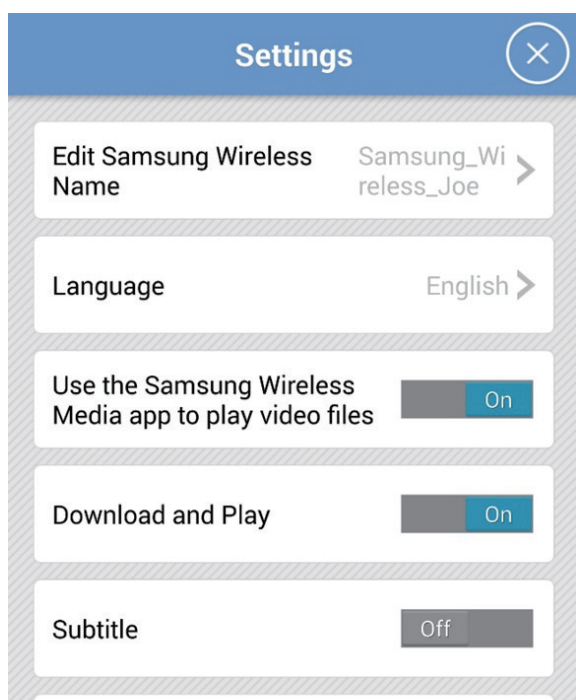
If you select a video which you did not fully watch, the App will ask you to resume playing or start over.



To stop playback of a video, press the Back button on the Android device.


Note : Your device's media player may be limited to playing only certain video formats. If a video that you copied to your Samsung Wireless does not play, it may be in a format that is not supported by your media player.

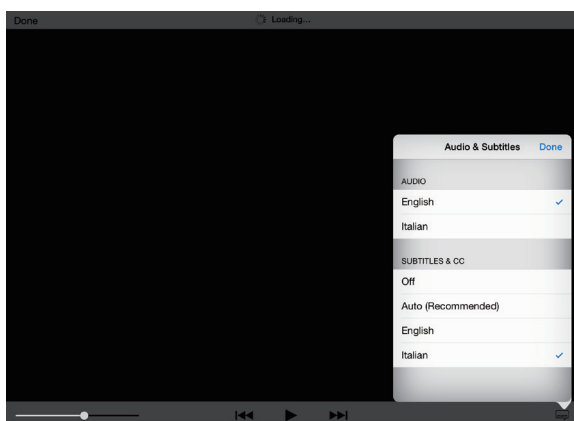
Tip : You can also use other media players instead of the default Samsung Wireless media player to play video content from your Samsung Wireless. If you do this, when you go to play a video, you will be prompted to use your choice of installed media players. In order to disable the Samsung Wireless media player, go to "Device" and then "Settings" and then select "Off" for the "Use the Samsung Wireless Media app to play video files".



Web Browser only : You may need to select a media player to play the video. Depending on the size of the video you choose to play, some browsers download the entire video before the video can be played. A full length movie may take several minutes to load.

iOS App- Audio and Subtitles

If your video has multiple languages or subtitles, you can select these while watching it. Click on the  icon to view and select your options.









iOS App

Select the Video icon  in the Multimedia Library.



This is the Samsung Wireless Video Player's User Interface. While the video is playing, you can tap the screen and then the menu will display.

1. File Name
2.  Screen Size Setting
3.  Previous File
4.  Next File
5.  Pause
6.  Play
7.  Languages and Subtitles



Note : Your device's media player may be limited to playing only certain video formats. If a video that you copied to your Samsung Wireless does not play, it may be in a format that is not supported by your media player

Viewing Photos

Select "Photos" to display the photos on the Samsung Wireless.

To view photo(s)

To view one photo, select the photo. Swipe forwards or backwards to show the next or previous photo.



Tip : You can zoom in on your photo.


To view a slide show

- To start a slide show, Click/Tap a photo while viewing it and a menu bar will appear on the bottom with the "Slide show" icon/button. Press the "Slide show" icon/button and it will bring up the slide show options.

To stop playback of a slideshow

- While viewing a slide during a slide show, Click/Tap the screen and an exit icon/button will show in the upper right of the screen. Press the button to exit the slide show.

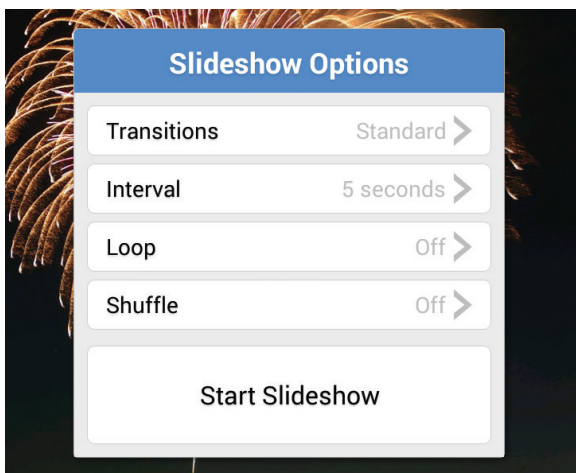
Android App

Tap the Photos  icon in the drop down menu.
Select the photo and swipe forward or backward.

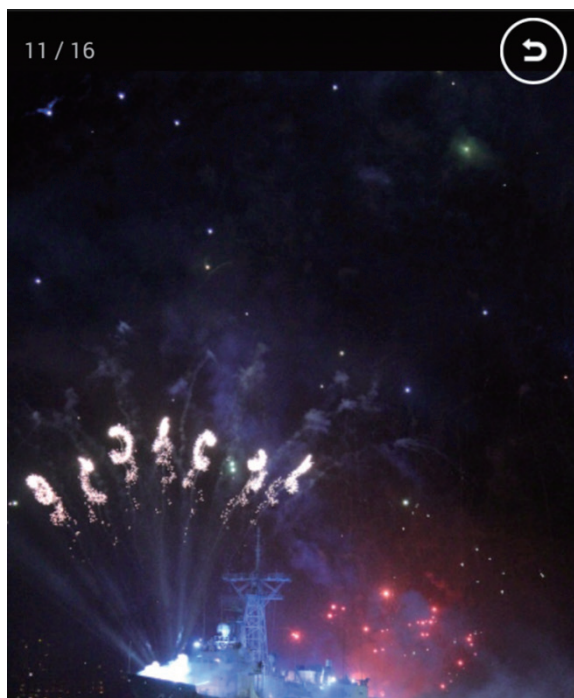


When you tap the screen, you will see the menu icons  (Slide show Options) &  (Exit)


In the Slide show Options, you can set the Slide show type and transition time.





To exit the slide show, tap the screen and tap  or press the back button of your Android device.

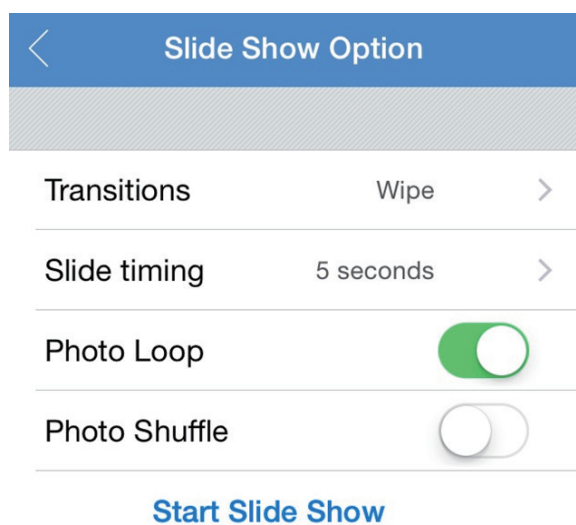


iOS App

Tap the Photos  icon in the Multimedia Library. Select the photo and swipe forward or backward.



When you tap the screen, you will see the menu icons  (Slide show Options) &  (Exit). In the Slide show Options, you can set the Slide show type and transition time.



To exit the slide show, tap the screen and tap < of your iOS device










Playing Music

Select “Music” to display the songs on the Samsung Wireless.

- To play one song, select the music file.
- To play multiple songs, tap the Action button (or check the check box) and select the songs you want to play and then select the Play button.
- To play all songs, tap the Action button (or check the check box), then the Select All button, then the Play button.
- To see songs or play specific songs in the playlist, Click/Tap the Playlists button.

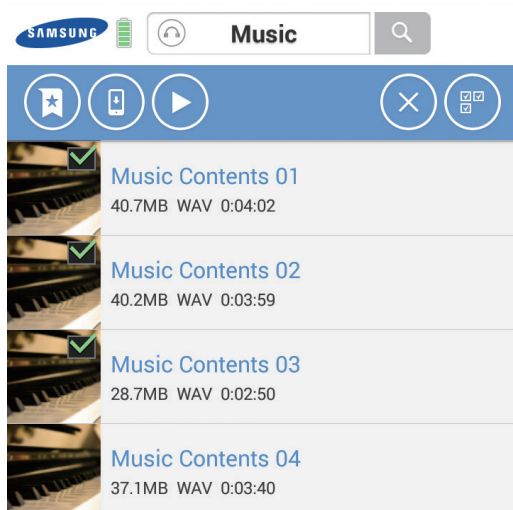
To control the currently playing song:

- To pause the currently playing song, tap the Pause icon .
- To skip to the next song in the selection, tap the NEXT icon .
- To go back to the previous song in the selection, tap the PREV icon .
- To repeat the currently playing song continuously, tap the REPEAT icon .
- To play the songs in the selection in random order, tap the RANDOM icon .
- To adjust the volume, drag the volume slider at the bottom of the Now Playing screen.
- To see songs in the playlist, tap the Playlist icon .
- To stop playing songs, tap the Close icon .

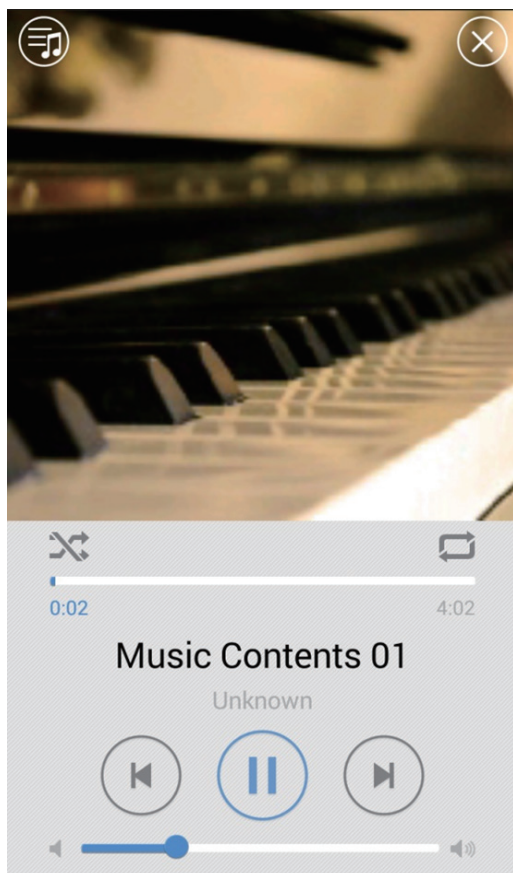
Android App

Select the Music icon  in the drop down menu.

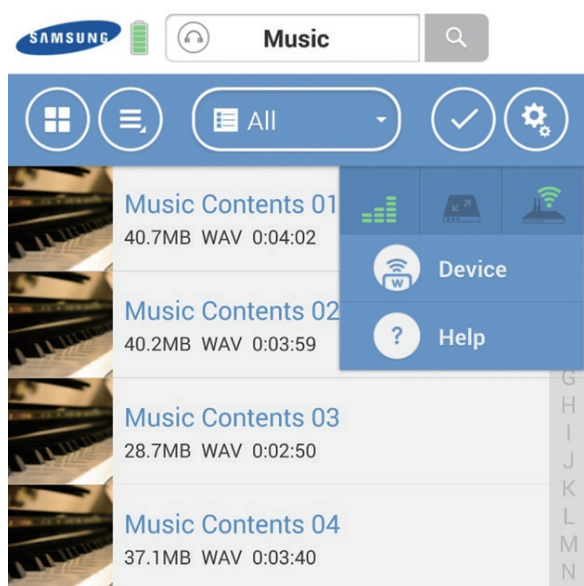
To play multiple songs, tap the Action button  and select the files and tap the Play button .



Tip : You can also swipe forward or backward to play the next or previous song.



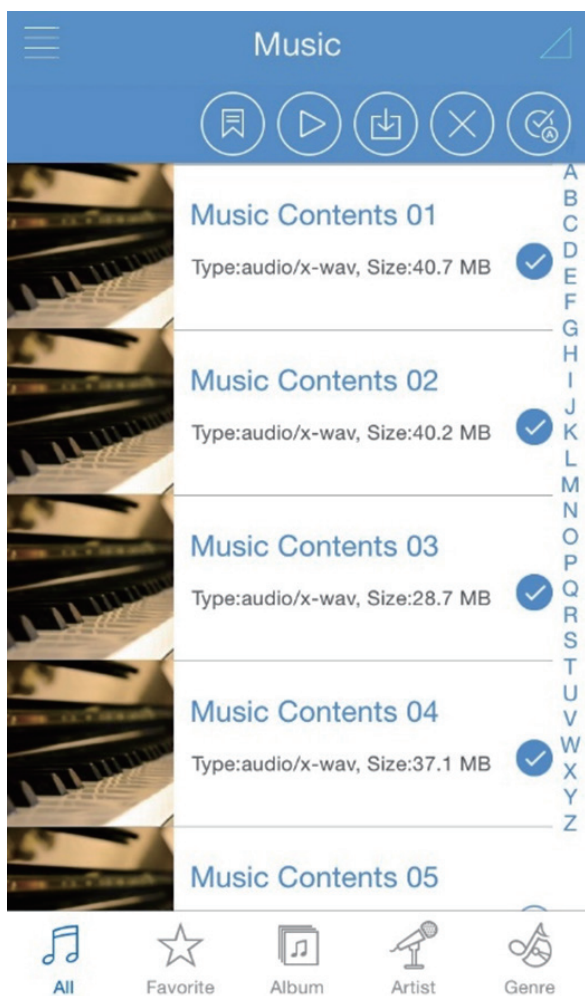
Tip : You can leave the music player running while browsing the contents of your Samsung Wireless. To return to the music player, tap/click the "Setup" icon button and then tap the "Playing Music" icon. This will open the music player again.



iOS App

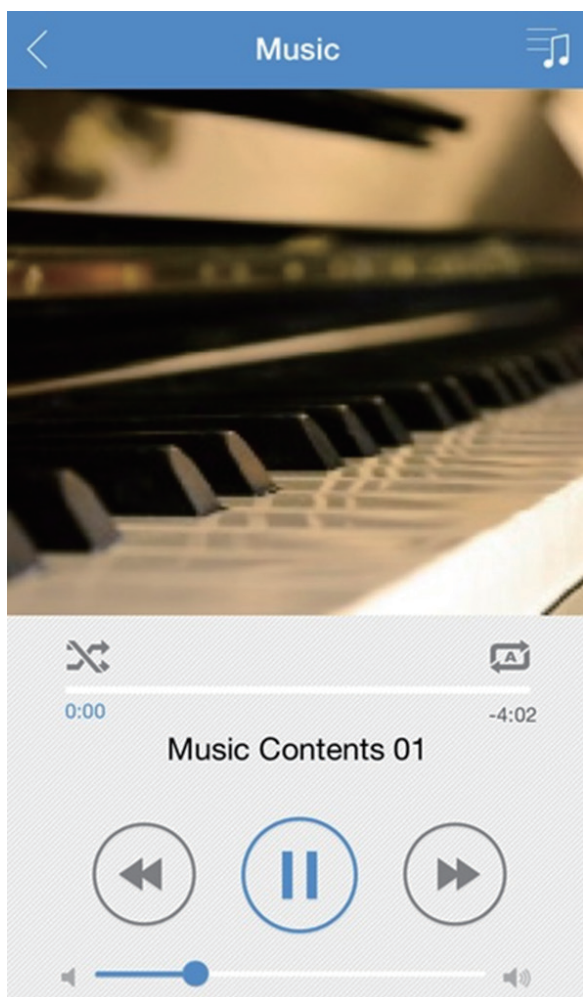
Select the Music icon  in the Multimedia Library

To play multiple songs, tap the Action button  and select the files and tap the Play button 

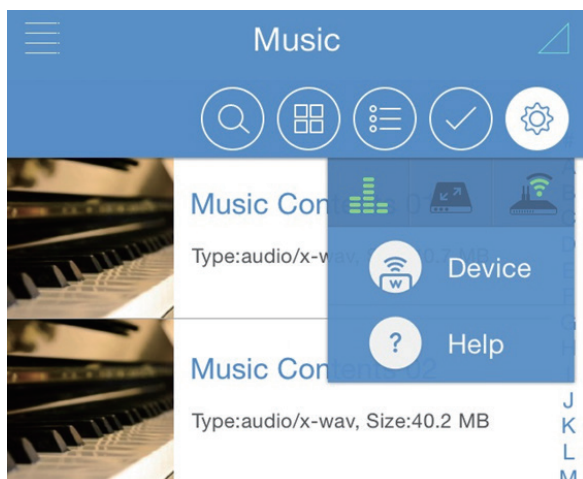




Tip : You can also swipe forward or backward to play the next or previous song.





Tip : You can leave the music player running while browsing the contents of your Samsung Wireless. To return to the music player, tap/click the "Setup" icon button and then tap the "Playing Music" icon. This will open the music player again.

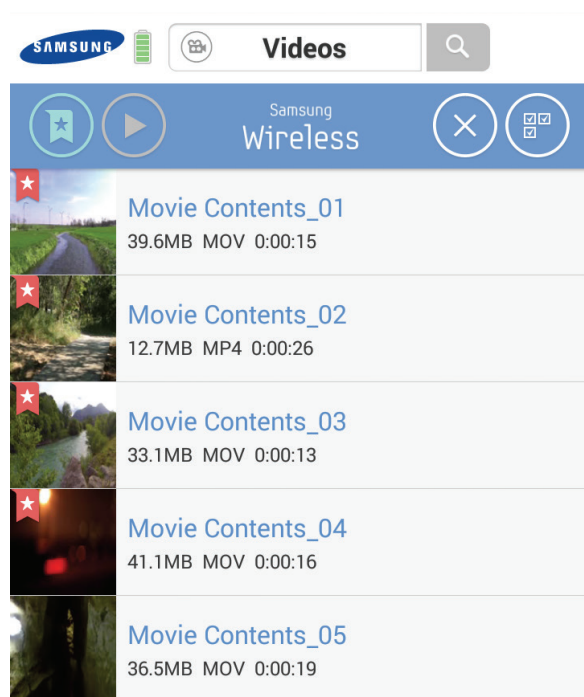


Adding Bookmarks

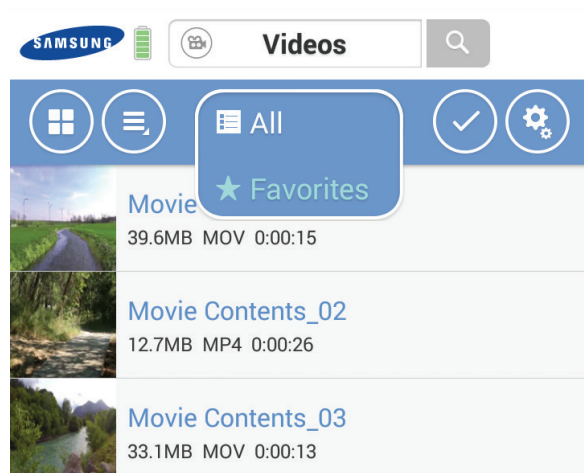
You can bookmark your favorite content and see it in Favorites. Tap the Action button and select the files (or mark bookmark) you want.

Android App



1. Tap the Action button 
2. Select Content which you want to bookmark. Bookmarked content is marked in thumbnail
3. Tap Bookmark button 

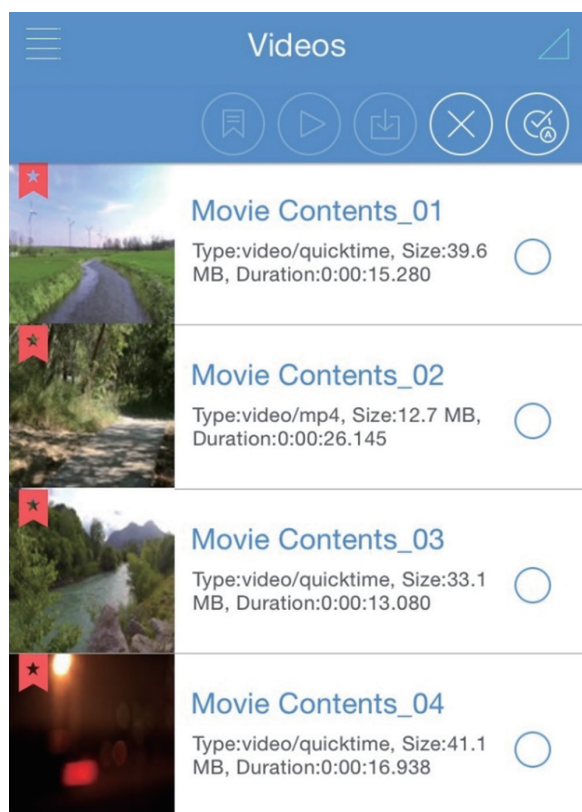


You can see bookmarked contents in 'Favorites'.

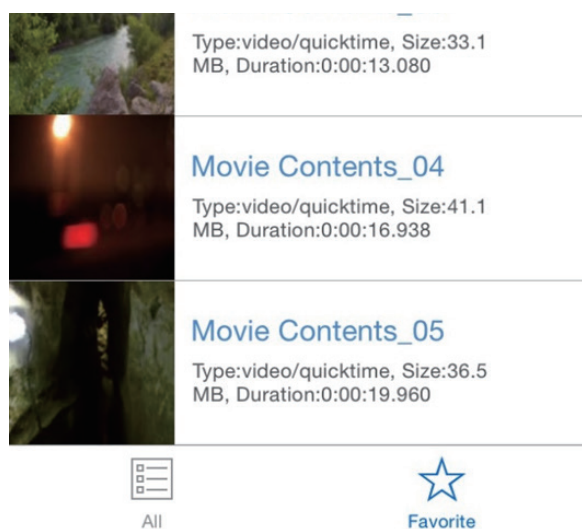


iOS App

1. Tap the Action button 
2. Select Content which you want to bookmark. Bookmarked content is marked in thumbnail)
3. Tap the Bookmark button 



You can see bookmarked contents in 'Favorites'



Note : Adding bookmarks in iOS is the same as adding bookmarks in Android

Viewing Content in Folders

The Folder View provides another way to view your content stored on your Samsung Wireless, showing your files and folders in their original structure from your computer. If you prefer to access your files from this view, the same playback controls are available to you.

In the drop down menu, select Samsung Wireless under 'Folders and Files' to display.

Downloading Content to Your Smart Device or Computer


In addition to streaming your content from the Samsung Wireless, you can copy files from the Samsung Wireless to your Smart Device or Computer. Your only limit to the number of files you can download is the available storage space on your Smart Device or Computer.

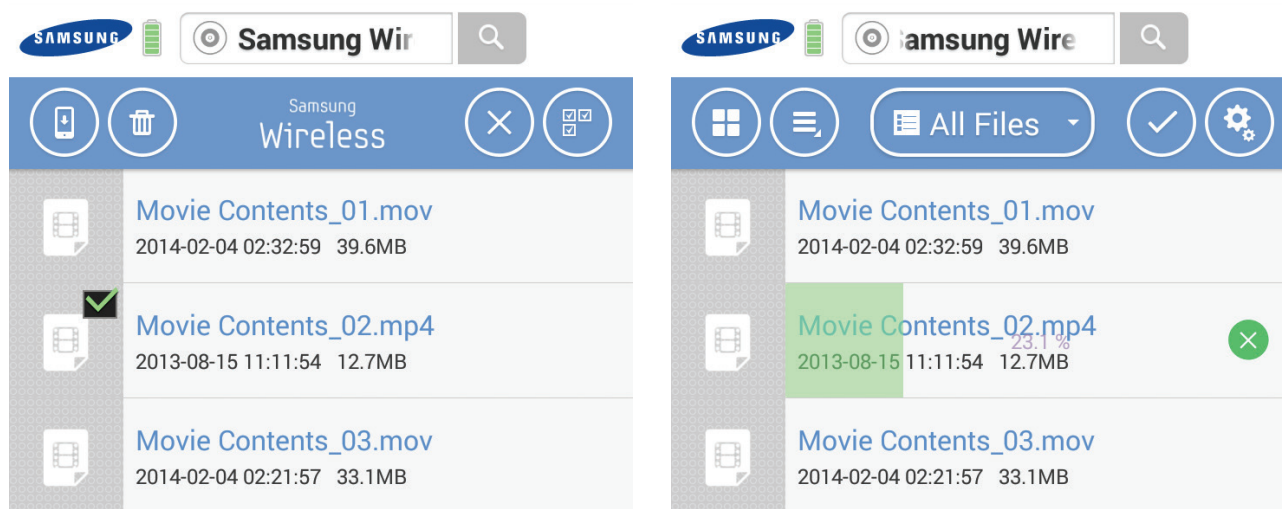
To download files :


1. Go to the 'Folder and Files' on your Samsung Wireless.
2. Find the files which you want to download from the Samsung Wireless.
3. Tap the Action button (or check the check box) and then either individually select the files to download or Click/Tap the Select All button to choose all of the files in the current view.
4. Click/Tap the Download button.

The files begin to download to your device. To stop downloading a file, select the X on the icon of a downloading file.

Android App

Tap Action button  and select the files and tap Download button .



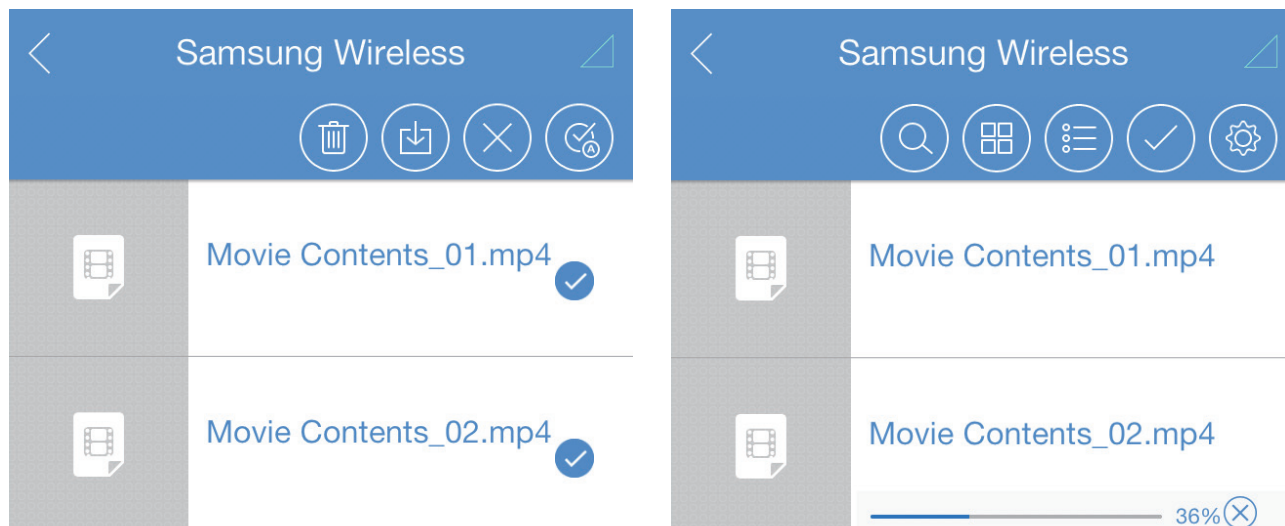
If you want to cancel the download you can tap the Cancel icon .




Note : If you download content from your Samsung Wireless to your Android device, it will be saved to '**Samsung Wireless folder**' in your Android device. Your files can be seen under Videos, Photos, or Music, depending on the file type.

iOS App

Tap Action button  and select the files and tap Download button 



If you want to cancel the download you can tap the Cancel icon 



Note : If you download content from your Samsung Wireless to your iOS device, it will be saved to “Samsung Wireless App” in your iOS device. Your files can be seen under Videos, Photos, or Music, depending on the file type.





Note : Downloading contents in iOS is the same as downloading contents in Android

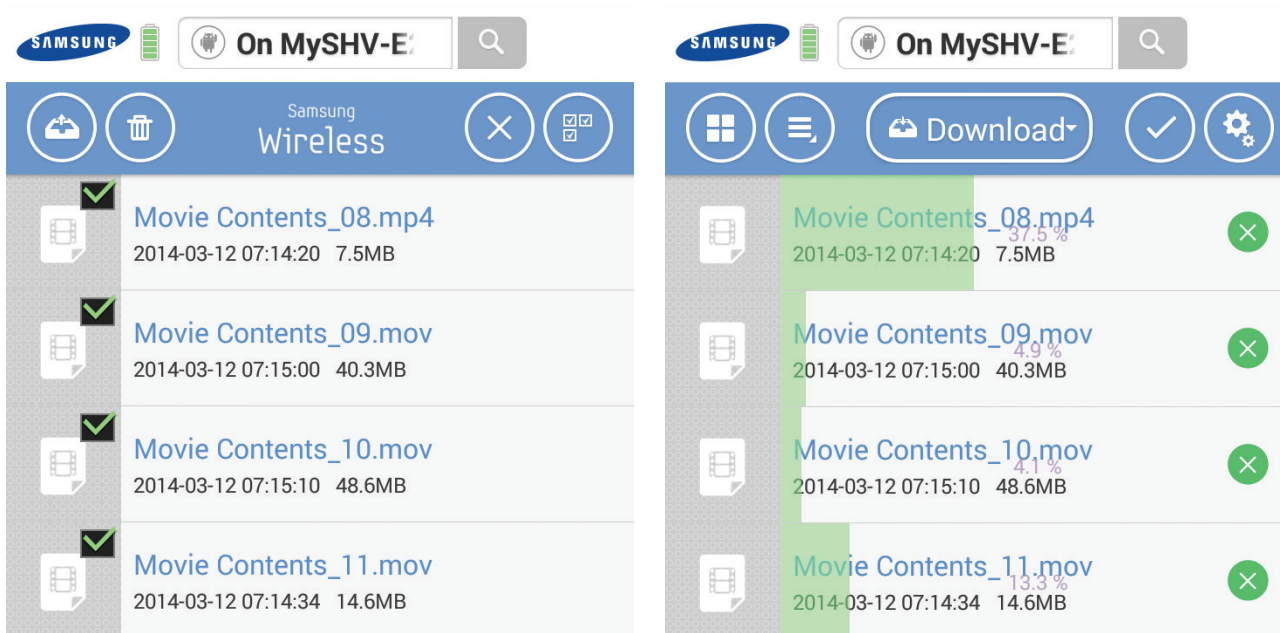
Wirelessly Uploading Content from Your Smart Device or Computer to Your Samsung Wireless

If you have files on your Smart Device or Computer that you want to upload to the Samsung Wireless without the USB cable being physically connected, do the following :

1. Go to the device (Your smart device or Computer) and then to the folder that contains the files you want to upload to the Samsung Wireless.
2. Click/Tap the Action button (or check the check box) and then either individually select the files to upload or tap the Select All button to choose all of the files in the current view.
3. Click/Tap the upload icon to start uploading the files from the device to the Samsung Wireless.



Android App

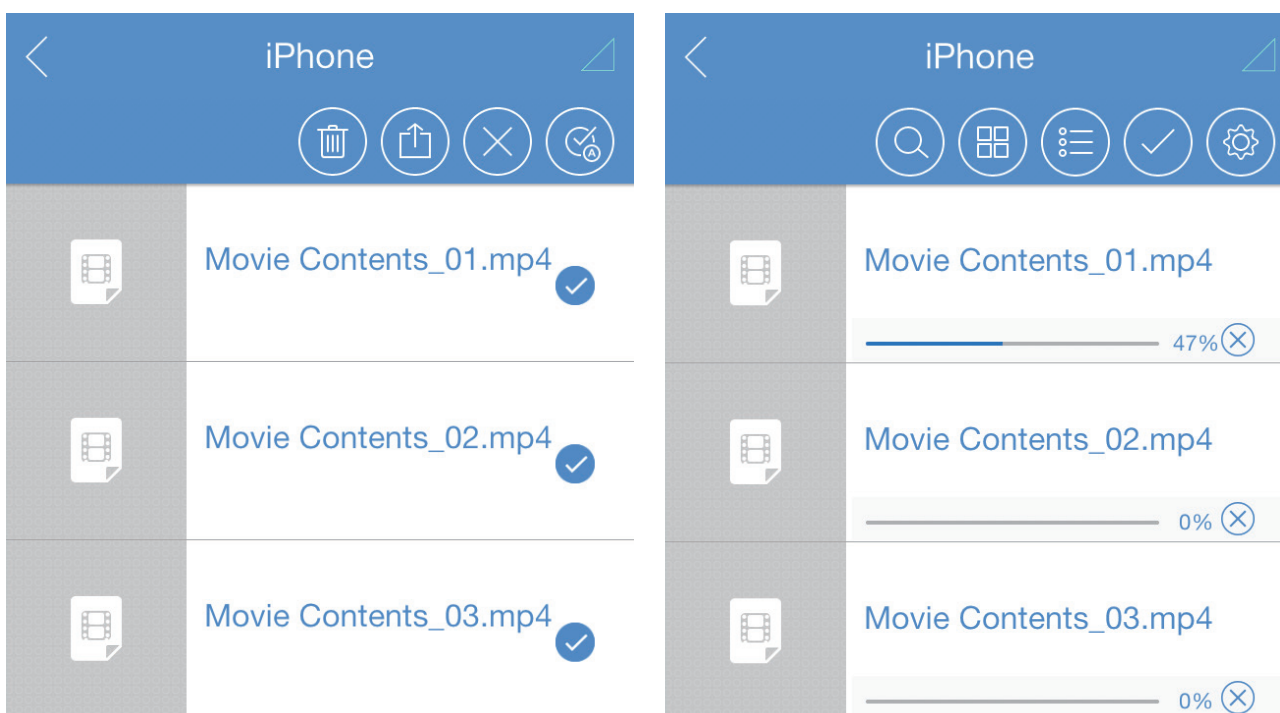
Tap the Action button  and select the files and tap the Upload button .



Note : Once uploaded, your files will be located in the **'Upload'** folder on the Samsung Wireless

iOS App

Tap the Action button  and select the files and tap the Upload button .



Note : Once uploaded, your files will be located in the **'iOS_upload'** folder on the Samsung Wireless

4. Enjoy your Samsung Wireless in your home network

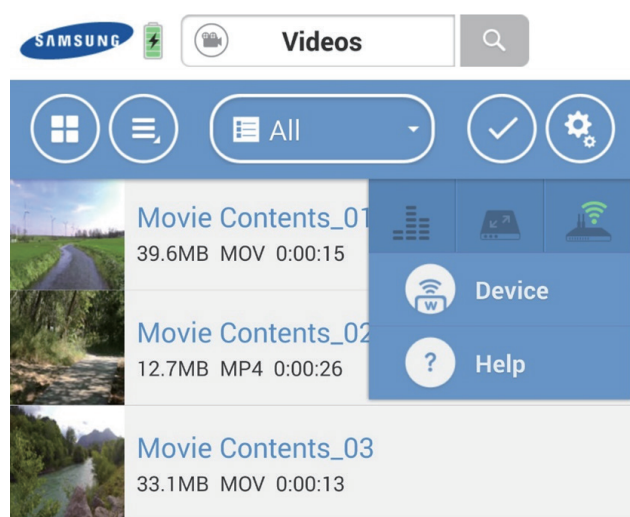
Use Samsung Wireless as a Wi-Fi hub and share digital media with up to 5 tablets, smartphones and computers. It creates a personal Wi-Fi network, so you can stream your media and files to your tablet or smartphone.


Connecting to the Internet While Connected to the Samsung Wireless

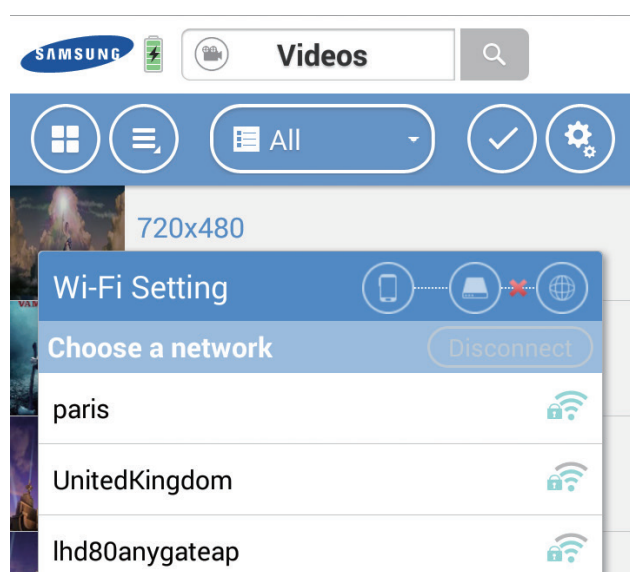
While streaming your media, you can also connect to the internet. You can be connected to your internet while watching a movie or listening to your favorite music from your device.

Android devices

1. Tap or Click the 'Setup' button and then choose  icon.



2. Pop up will show you available Wireless networks.
 Tab or Select network. If security is enabled on selected Wi-Fi, enter required password.
 (This icon means secured network )



3. Once connected to the network, you can use your device's Web browser, check e-mail, and so on (Assuming the network is connected to the Internet).

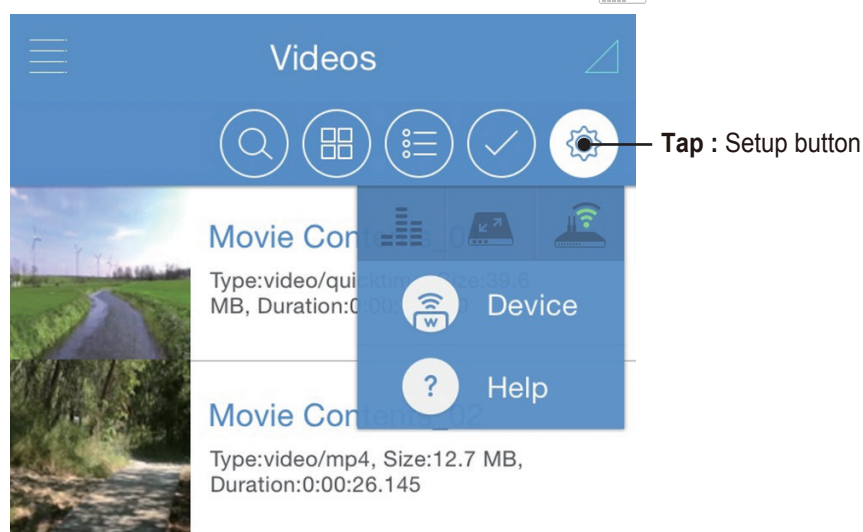
If you want to disconnect from the Wi-Fi network tap 'Disconnect' button



Tip : We do not recommend streaming a movie from the Internet while the Samsung Wireless is connected to your Wi-Fi.

iOS devices

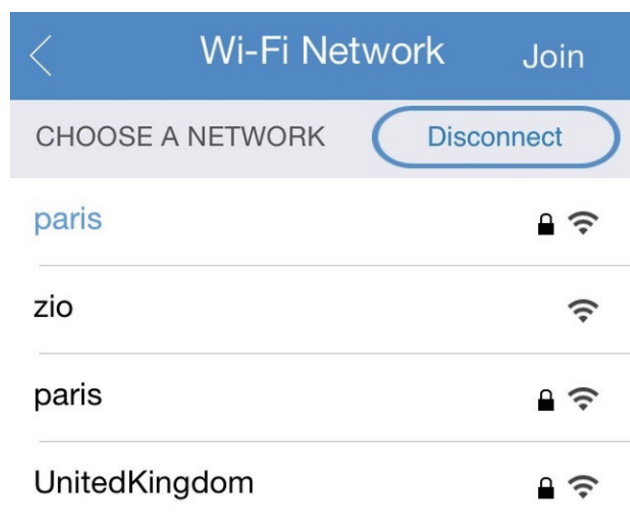
1. Tap or Click the 'Setup' button  and then choose  icon.



2. Pop up will show you available Wireless networks.

Tap or Select network. If security is enabled on selected Wi-Fi, enter required password.

(This icon means secured network )



3. Once connected to the network, you can use your device's Web browser, check e-mail, and so on (Assuming the network is connected to the Internet).

If you want to disconnect from the Wi-Fi network tap 'Disconnect' button

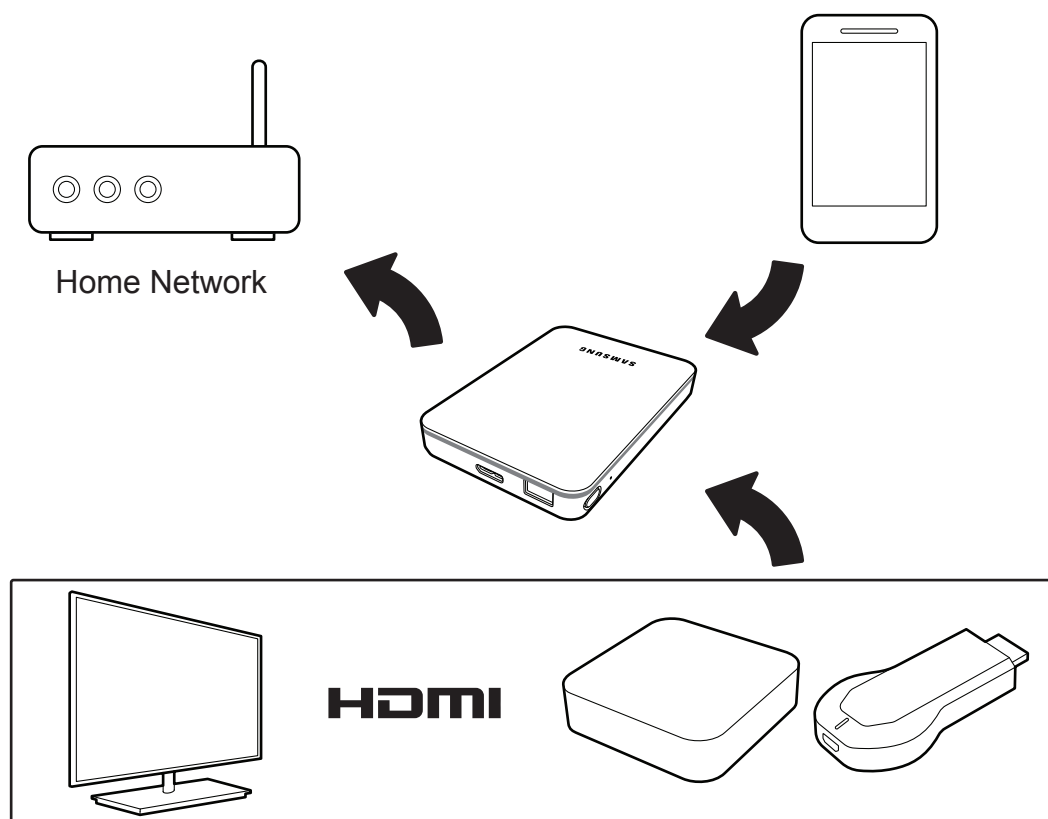


Tip : We do not recommend streaming a movie from the Internet while the Samsung Wireless is connected to your Wi-Fi.

Enjoy your Samsung Wireless with your TV

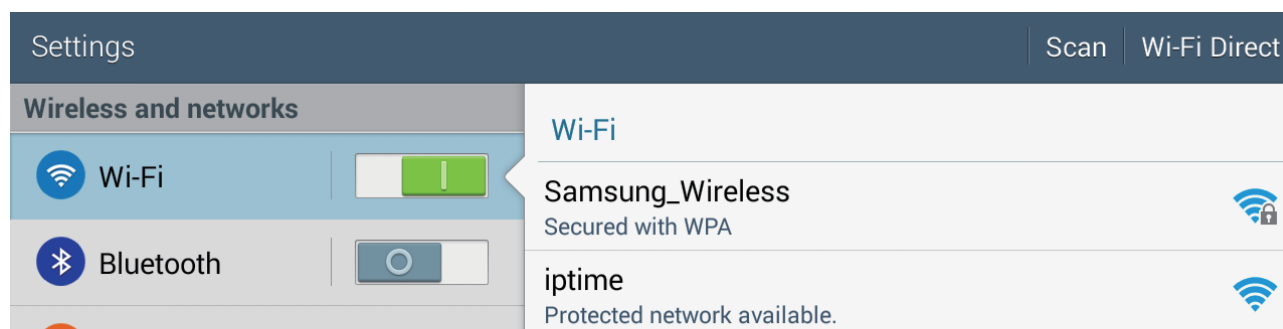
The Samsung Wireless application for your Android or iOS device allows you to stream content to your TV via Chromecast or Apple TV.

Connect your Chromecast device or Apple TV to your Samsung Wireless, connect your Android or iOS device to your Samsung Wireless, and then connect your Samsung Wireless to your home network.

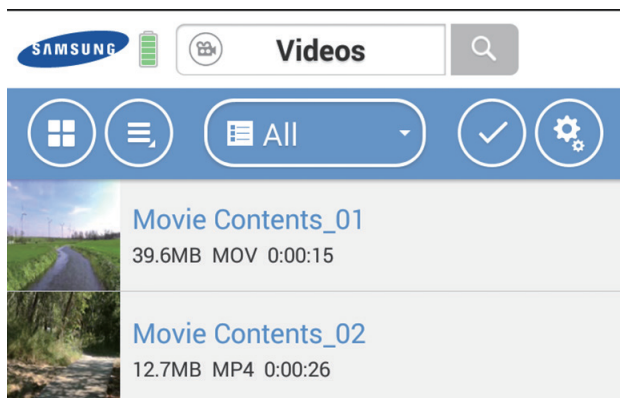


Android devices

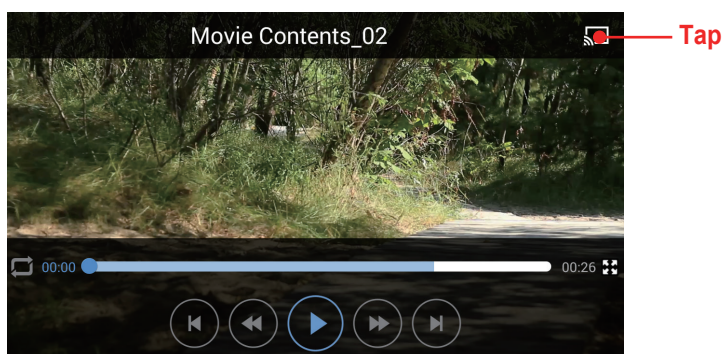
1) Select Samsung Wireless Network from available networks on your Android device and the Chromecast device.



2) Tap or Click the contents from your Samsung Wireless to stream.

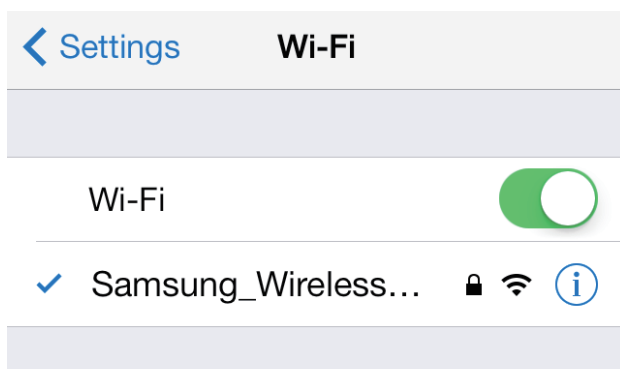


3) Tap or Click the Cast button and then select your Chromecast device

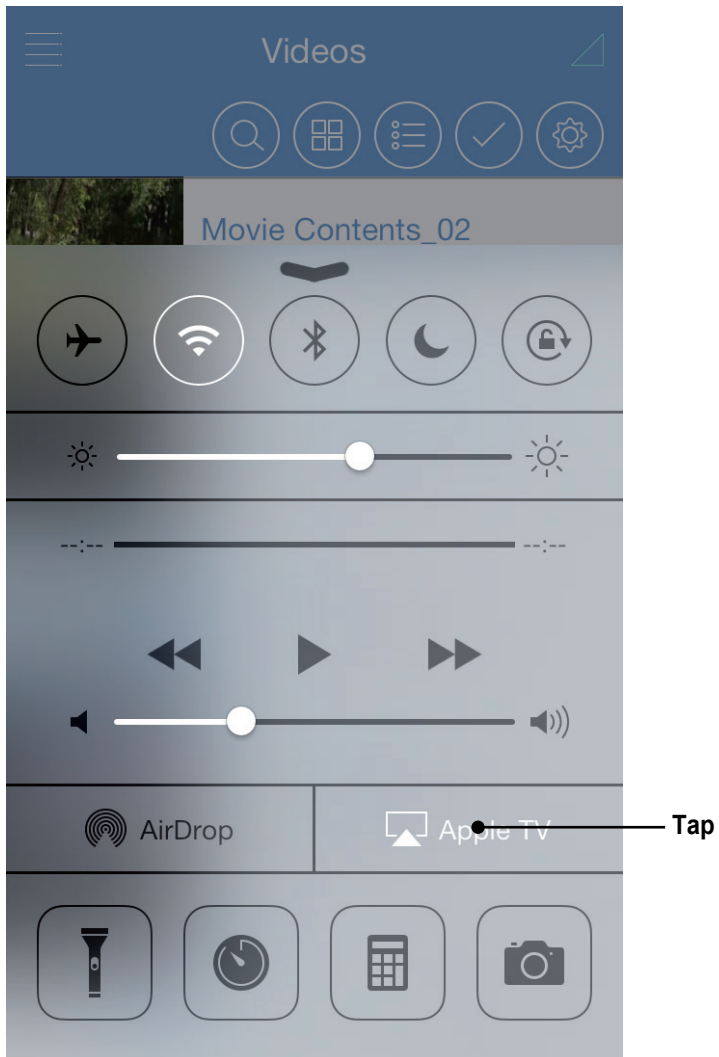


iOS devices

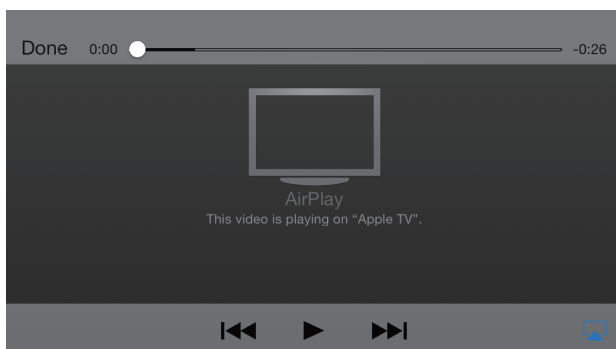
1) Select Samsung Wireless Network from available networks on your iOS device and the Apple TV



2) Select Airplay option from iOS setting



3) Tap or Click the contents from your Samsung Wireless to stream.



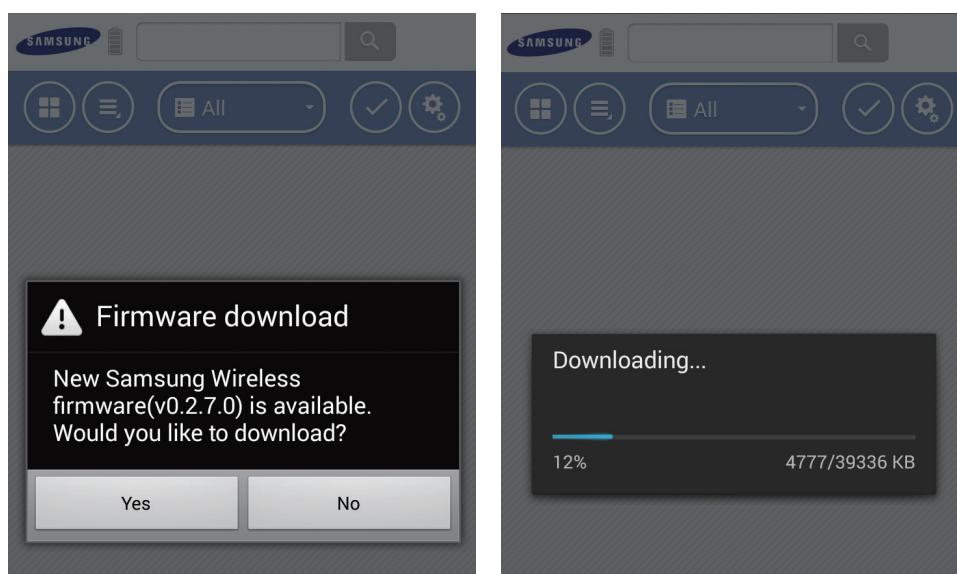
5. Managing Your Samsung Wireless

Once your Samsung Wireless has been set up, you may want to adjust its settings, upgrade its firmware (when available), change the password and more.

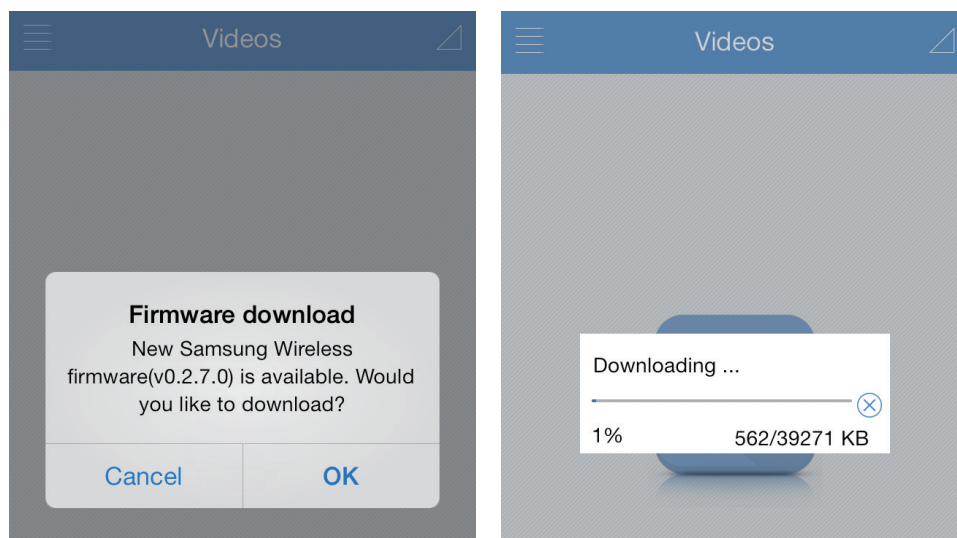
Upgrade Your Samsung Wireless Firmware

If you connect to your Samsung Wireless via your Android app or iOS app, you will get notification if there a firmware upgrade. By tapping the OK button, you can upgrade your Samsung Wireless firmware. Samsung Wireless app will download firmware from internet and then upgrade your Samsung Wireless. Your Samsung Wireless will be restarted in the process.

Android App



iOS App



Note : Your Andoroid or iOS device should be connected to the internet first to download Samsung Wireless firmware.

Restarting Your Samsung Wireless

If you experience minor problems with your Samsung Wireless device, follow these steps to restart the device.



Note : Restarting your Samsung Wireless device does not remove any user settings or delete content from the device.

To shut down and restart your Samsung Wireless device

1. Make sure that no one is watching a video, viewing photos, listening to music, or working with any other file stored on the Samsung Wireless device.
2. Open the Samsung Wireless app or connect to your Samsung Wireless device from a browser.
3. Under the 'Setup' button menu, go to "Device" and then "System" and then select "Restart Samsung Wireless".

Your Samsung Wireless device safely shuts down and restarts. When it is fully powered on and broadcasting wirelessly, it appears in the list of wireless networks on your device. You will need to reconnect to your Samsung Wireless device. See "Step 4: Connecting to Your Samsung Wireless" on page 7.

Shutting Down the Samsung Wireless

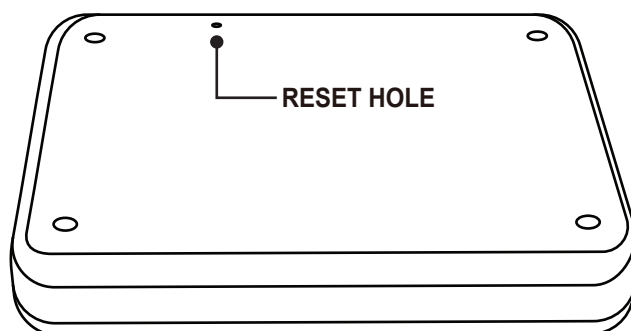
Turning off the Samsung Wireless device can be completed in one of two ways: by pressing the 'Power Button' or from the Samsung Wireless Settings screen. When you turn off your Samsung Wireless device, it stops broadcasting wirelessly.

To shut down the Samsung Wireless device from the app or browser

From the Samsung Wireless app or if you are using a browser, under the 'Setup' button menu, go to "Device" and then "System" and then select "Shut down Samsung Wireless".



Tip : If you are unable to shut down your Samsung Wireless using either of these methods, using a paperclip, press and release the button in the reset hole and the power button together. The Reset hole is located on the bottom of the Samsung Wireless.



Note : Please review the following page prior to executing a Reset.

Restoring Your Samsung Wireless to its Original Settings

Restoring the Samsung Wireless device returns it to its original factory defaults. All the files stored on your Samsung Wireless device are retained—no files or folders are deleted—but all other settings, such as your Samsung Wireless device name and password, are removed. You may need to perform this task in the event that you forget your password. Pressing the Reset button on the bottom of the Samsung Wireless device performs the same function.

1. Make sure that no one is watching a video, viewing photos, listening to music, or working with any other file stored on your Samsung Wireless device.
 2. From the Samsung Wireless app, or if you are using a browser, the 'Setup' button menu, go to "Device" and then "System".
 3. Select "Reset to Factory Defaults".
- Or
4. Using a paperclip, press 5 seconds and release the Reset button. It is located on the bottom of the Samsung Wireless.

The Samsung Wireless device name is changed back to 'Samsung Wireless' and any password you may have set is erased. See "Changing the Name of Your Samsung Wireless" on page 38 or "Change a Password of Your Samsung Wireless Network" on page 38 to reset these preferences.

You will also need to reconnect to Samsung Wireless. See "Step 4: Connecting to Your Samsung Wireless" on page 7.

Changing the Name of Your Samsung Wireless

The Samsung Wireless is named Samsung Wireless abc..., where the 'abc...' represents a unique identifier for your device. This is the network name that appears in the wireless network list when you choose to connect to the Samsung Wireless from your Wi-Fi enabled device. This name is also known as the SSID (Service Set Identifier).

You can change this name if you prefer it to be named differently. Follow these steps to change the Samsung Wireless name :

1. From the Samsung Wireless app or if you are using a browser, under the 'Setup' button menu, go to "Device" and then "Settings".
2. Select "Edit Samsung Wireless Name".
3. Type a new name and then click OK. You will need to reconnect to your Samsung Wireless since the name (SSID) has been changed.



Note : Do not use special characters or spacing for your Samsung Wireless name.

Change the Password of Your Samsung Wireless Network

The initial WiFi password on your Samsung Wireless is set to 10 times "0" (0000000000).

You may want to change this password.

1. From the Samsung Wireless App or if you are using a browser, under the 'Setup' button menu, go to "Device" and then "Network".
2. Select "Change Password".
3. Type the new password.

The password must be at least eight characters long and no more than 64 characters.

All ASCII characters are acceptable. Most of these characters are available on your device's keyboard.

Disconnecting From the Samsung Wireless Network

1. Open your Smart device's or Computer's list of wireless networks.
2. Choose a wireless network other than Samsung Wireless.

Changing the Language of Your Samsung Wireless App

The Samsung Wireless app supports a number of different languages. You can change the language of the app from the Settings screen.



Note : This only changes the language of the Samsung Wireless app; it has no effect on the language of the smart device you are using.

1. From the Samsung Wireless app or if you are using a browser, under the 'Setup' button menu, go to "Device" and then select "Settings".
2. Select Language and then choose the language you want.

Deleting Content from Your Samsung Wireless

To delete content from your Samsung Wireless device, connect your device to your computer using the USB 3.0 cable or use the Android, iOS App and Web Browser. Browse the Samsung Wireless folders, and then delete files.

Disconnecting Your Samsung Wireless from Your Computer

To avoid losing data or damaging your files, follow these instructions to safely remove your Samsung Wireless when you have it connected via the USB cable to your computer :

1. Make sure that no files on your Samsung Wireless are open or in the process of being saved or copied to the device.
2. Depending on the operating system you are using, safely eject the drive from your computer :
 - For Windows, click the Safely Remove Hardware icon. Windows operating systems list the drive as a USB Mass Storage Device.
 - For Mac OS, click Storage icon and choose Eject "Samsung" or drag the Samsung Wireless device icon from the desktop to the trash.
3. Wait for the status light to turn off.
4. Once the light turns off, you can safely remove your Samsung Wireless from your computer.

For Windows

The taskbar is located at the bottom-right of the screen.
Click "Safely Remove Hardware".



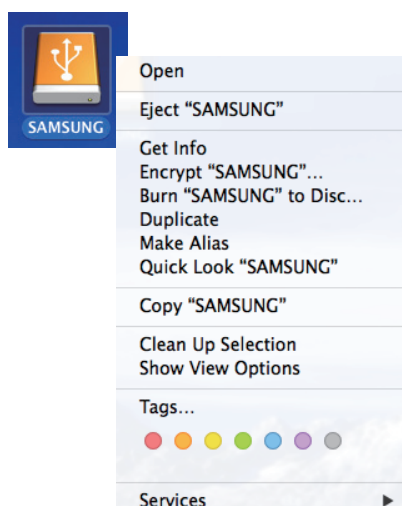
The "Safely Remove Hardware" prompt will list every device that is attached to your system.
Click "Eject Samsung Wireless".



When you see the “Safely Remove Hardware” message, you may safely remove the Samsung wireless from the system.

For Macintosh

Click the external hard drive icon and select “Eject Samsung”.



This safely disconnects the drive. It is now safe to detach the drive from computer.

6. An Overview of Your Samsung Wireless

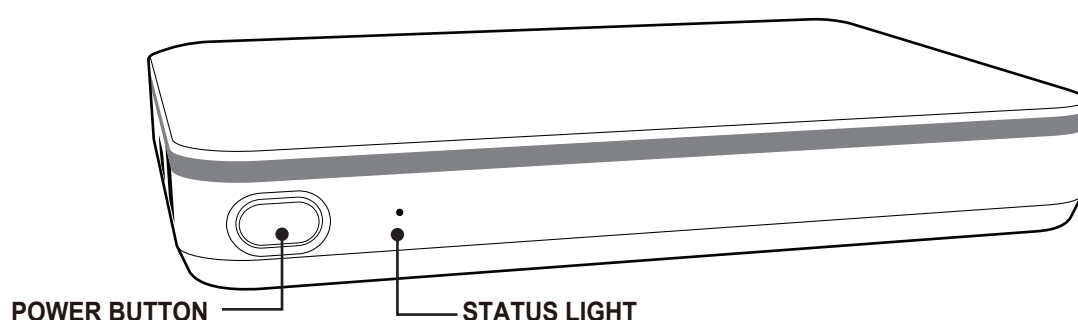
This chapter provides an overview of your Samsung Wireless.

(Powering on the device, charging, understanding the status lights, etc.)

Understanding the Samsung Wireless Components

This section identifies the different parts that make up your Samsung Wireless and provides information to help you keep your device charged and ready to stream your media library to your viewing/listening device.

The following diagram shows an illustration of your Samsung Wireless.



- Power Button :
 - Turn on Samsung Wireless : Press Power Button 3 seconds.
 - Turn off Samsung Wireless : Press Power Button 2 seconds.
- Status light : Indicates the Power and Wi-Fi state.
 - Solid Green : Samsung Wireless is turned on or Samsung Wireless is turned off and charging.
 - Slow blinking Blue : Samsung Wireless is Wi-Fi ready.
 - Fast blinking Green : Samsung Wireless turning off.
 - Status light is turned off : Samsung Wireless is fully charged and turned off.
- DC Power USB Wall Adapter: Connects your Samsung Wireless (USB 3.0 interface) to the DC power.
- Reset Button: (This button is located on the bottom of your Samsung Wireless) Press and release to reset the hardware. This will power off, then power on the device. No data is lost during this process.
For more information, see "Restoring Samsung Wireless to its Original Settings" on page 38.

Charging the Battery

The Samsung Wireless device uses a rechargeable lithium-ion battery. A fully charged battery provides up to 7 hours of use. However, the battery will lose its charge faster when playing High Definition video. Your Samsung Wireless enters sleep mode after 3 minutes of inactivity. (This time setting can be changed)

The fastest way to charge the battery is to connect the Samsung Wireless to a power outlet using the included USB wall adapter. It takes about four hours to charge the battery.



Note : For safety purposes, the device stops charging after four hours.

Your Samsung Wireless also charges when it is connected to a computer, but at a slower rate.

The lithium-ion battery inside your Samsung Wireless device is not user-replaceable. The lifespan of rechargeable batteries can be affected by the number of charge cycles.

7. Troubleshooting

The Samsung Wireless is a plug and play device. However, in certain situations, the setup process and product usage may require extra attention. Below is a list of troubleshooting tips to assist you should you have any problems during setup.

Common Problems and Solutions

This section provides suggestions for solving common problems.

It takes a while for my files to appear in the Samsung Wireless app or Web browser

The Samsung Wireless performs a one-time scan of any content you copy to the drive. This scanning process may take a while if you copy a large amount of data.

If you recently copied content to the Samsung Wireless drive and you don't see your files: tap the Sync icon to refresh the files within the Samsung Wireless app, or Press the Refresh button to update the page you are viewing from a browser.

Can't connect wirelessly to the Samsung Wireless

- Make sure the Samsung Wireless is disconnected from your computer, powered on and that the status light is blinking blue.



Note : The Samsung Wireless turns Wi-Fi off while connected to a computer via the USB cable.

- Make sure to select Samsung Wireless from your device's wireless network list. If you leave the Samsung Wireless's wireless range, your device will disconnect from the Samsung Wireless wireless signal. The wireless range is up to 45m/147 feet.
Any obstructions, such as walls between your device and Samsung Wireless, may affect the strength of the signal. You will have to rejoin the network in this case.
- If you know that the Samsung Wireless is on, but you can't connect to it, , there may be too many devices connected to Samsung Wireless, only five wireless devices connected to Samsung Wireless at one time; try disconnecting one of the other devices.
- Make sure the Samsung Wireless is powered on. If the Samsung Wireless is powered off, the wireless connection from your device is lost. To reconnect, make sure it is turned on and select "Samsung Wireless" from your device's wireless network list.
- If you are attempting to stream using a browser, make sure that your device's wireless connection is enabled.
Enter the following address in your web browser address bar 172.25.0.1
- Click the Refresh button on your browser.

A song, video or other file won't play

- Make sure that your device supports the file format.
You can copy any file to the Samsung Wireless, however, the device to which you stream your media files will only play or view the formats it supports. Your Samsung Wireless does not transcode (convert) the files you copy to the drive. See your device's specifications for a complete list of supported file types.
If you want to convert video files to different formats so they can be played on your device, you'll need to transcode the files before copying them to the drive.

I can't connect to Samsung Wireless from my Smart Device

Make sure you have selected "Samsung Wireless" from your wireless network list. For more information, see "Connecting to the Samsung Wireless" on page 7.

My computer won't connect to Samsung Wireless

Make sure to enable your wireless settings and select "Samsung Wireless" from your wireless network list. For more information, see "Connecting to the Samsung Wireless" on page 7.

The Samsung Wireless seems to shut down by itself

Your Samsung Wireless includes a power-save feature, which means that it enters a standby state after 3 minutes or setup time of sleep mode. Samsung Wireless automatically returns to active mode whenever someone attempts to access the device.

I know the Samsung Wireless is on, but I can't connect to it

There may be too many devices connected to Samsung Wireless, only five wireless-enabled can stream from the Samsung Wireless at one time.